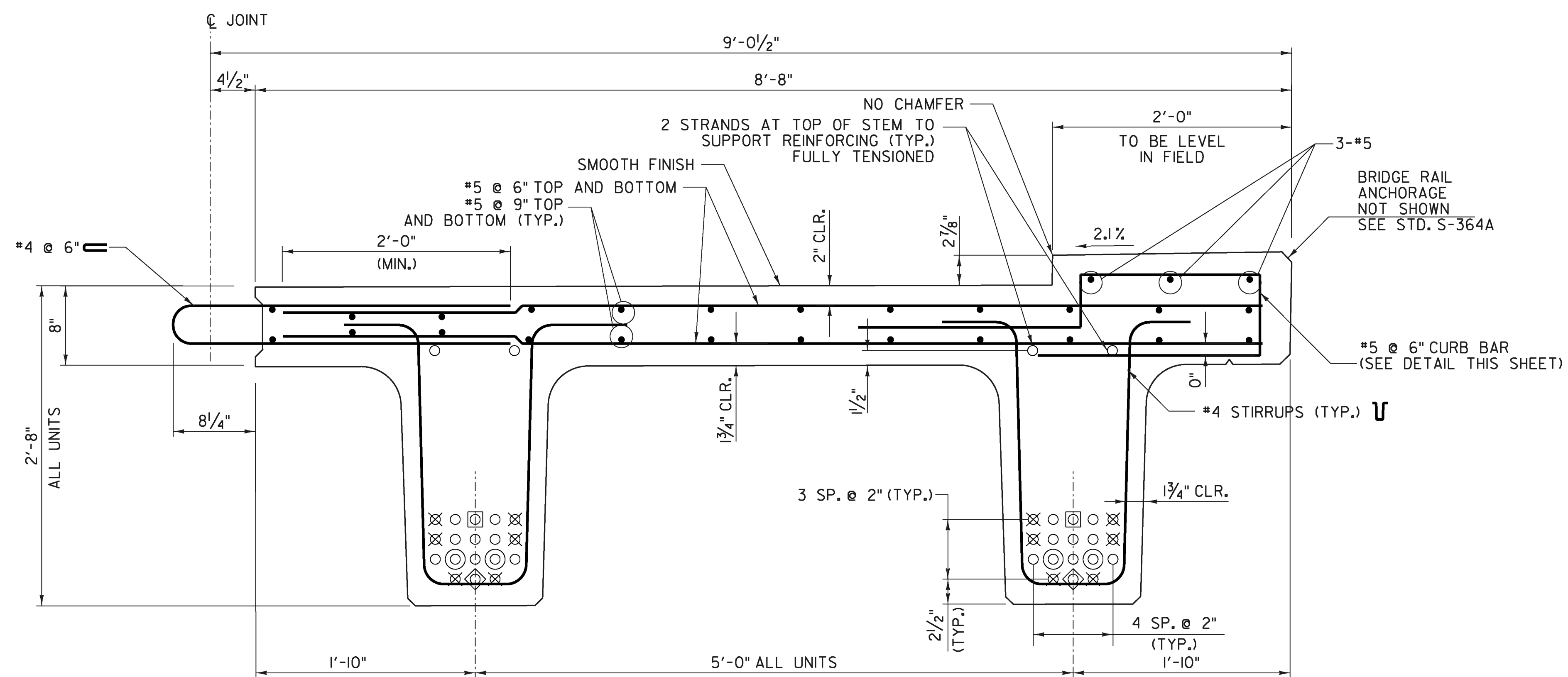


**UNIT 2**  
**TYPICAL BEAM REINFORCING**  
 SCALE 1/2" = 1'-0"

- NOTES:**
1. LEAVE SIX STRANDS 1'-6" LONG.
  2. REINFORCING STEEL SHALL MEET THE REQUIREMENTS OF SECTION 507 FOR LEVEL II REINFORCING STEEL.



**UNIT 3**  
**TYPICAL BEAM REINFORCING**  
 SCALE 1/2" = 1'-0"

- NOTES:**
1. LEAVE SIX STRANDS 1'-6" LONG.
  2. REINFORCING STEEL SHALL MEET THE REQUIREMENTS OF SECTION 507 FOR LEVEL II REINFORCING STEEL.

PROJECT NAME: ENOSBURG  
 PROJECT NUMBER: BRO 1448(40)

FILE NAME: ...\\XX Next\_Beam\_Det\_2.dgn PLOT DATE: 10/4/2013  
 PROJECT LEADER: G. BOGUE DRAWN BY: L. BUXTON  
 DESIGNED BY: T. KNIGHT CHECKED BY: T. KNIGHT  
**NEXT BEAM DETAILS - 2** SHEET 23 OF 46

