

ITEM 621.30 - BOX BEAM GUARDRAIL

STA. 9+60.5 - 10+90.3, RT.
STA. 10+15.5 - 10+90.8, LT.
STA. 12+28.5 - 12+31.4, LT.
STA. 12+24.2 - 12+25.3, RT.
10+79.3 AS PER COD #2

ITEM 621.80 - REMOVAL AND DISPOSAL OF GUARDRAIL

STA. 10+75.8 - 11+29.3, RT.
STA. 11+01.5 - 11+29.7, LT.
STA. 12+01.8 - 12+24.1, LT.
STA. 12+02.2 - 12+21.3, RT.

ITEM 621.725 - GUARDRAIL APPROACH SECTION, GALVANIZED 3 RAIL BOX BEAM

STA. 10+90.8 - 11+22.7, LT.
STA. 10+90.3 - 11+22.5, RT.
STA. 11+98.3 - 12+28.5, LT.
STA. 11+98.6 - 12+24.2, RT.

ITEM 613.12 - STONE FILL, TYPE III

STA. 11+07.1 - 11+46.7, LT.
STA. 10+25.0 - 11+46.9, RT.
STA. 11+82.0 - 12+28.4, RT.
STA. 11+83.9 - 12+07.1, LT.

ITEM 649.31 - GEOTEXTILE UNDER STONE FILL

STA. 11+07.1 - 11+46.7, LT.
STA. 10+25.0 - 11+46.9, RT.
STA. 11+82.0 - 12+28.4, RT.
STA. 11+83.9 - 12+07.1, LT.

ITEM 402.10 - AGGREGATE SHOULDERS, IN PLACE

STA. 9+36.0 - 11+24.0, RT.
STA. 10+21.0 - 11+24.0, LT.
STA. 11+97.0 - 12+54.3, LT.
STA. 11+97.0 - 12+30.0, RT.
STA. 12+53.4 - 13+50.0, LT.
STA. 12+76.0 - 13+50.0, RT.

ITEM 210.10 - COLD PLANING, BITUMINOUS PAVEMENT

STA. 10+00.0 - 10+10.0
STA. 12+40.0 - 13+50.0

ITEM 620.55 - REMOVAL OF EXISTING FENCE

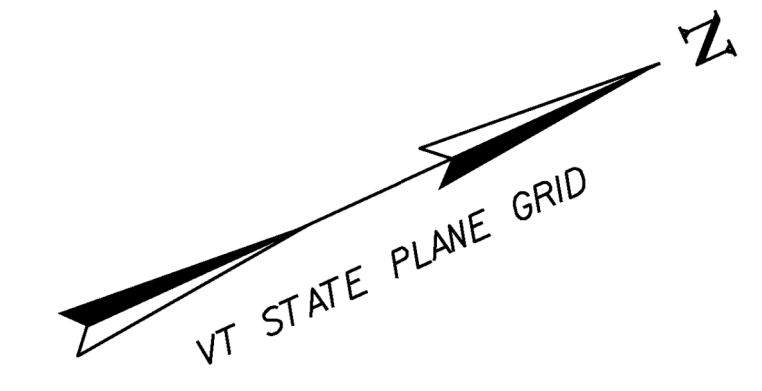
STA. 11+90.0 LT.

ITEM 620.26 - WOVEN WIRE FENCE WITH WOOD POSTS

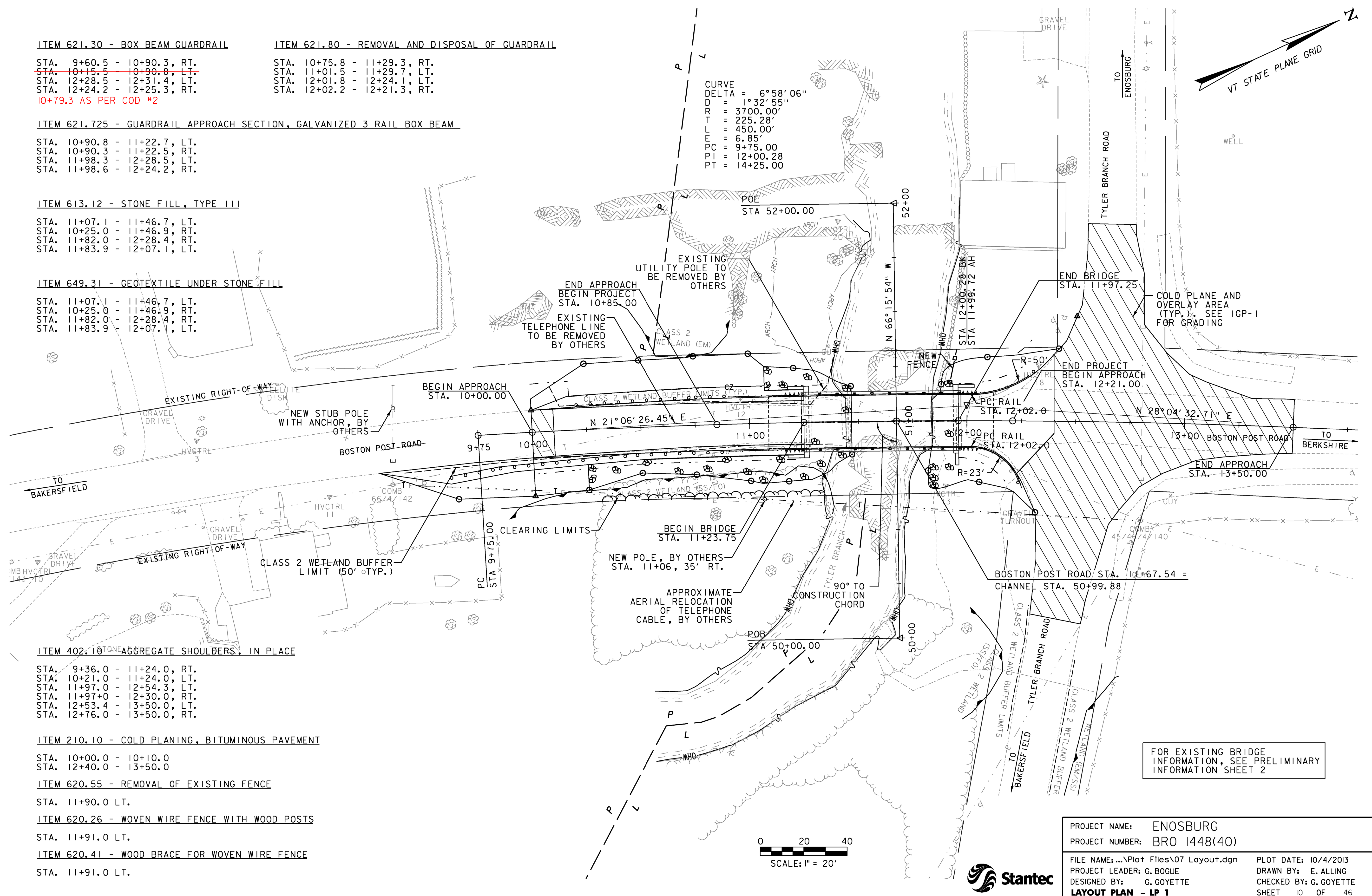
STA. 11+91.0 LT.

ITEM 620.41 - WOOD BRACE FOR WOVEN WIRE FENCE

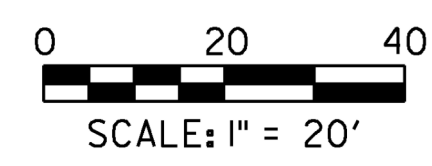
STA. 11+91.0 LT.



CURVE
DELTA = 6°58'06"
D = 1°32'55"
R = 3700.00'
T = 225.28'
L = 450.00'
E = 6.85'
PC = 9+75.00
PI = 12+00.28
PT = 14+25.00



FOR EXISTING BRIDGE INFORMATION, SEE PRELIMINARY INFORMATION SHEET 2



PROJECT NAME:	ENOSBURG
PROJECT NUMBER:	BRO 1448(40)
FILE NAME:	...Plot Files\07 Layout.dgn
PROJECT LEADER:	G. BOGUE
DESIGNED BY:	G. GOYETTE
LAYOUT PLAN - LP 1	
PLOT DATE:	10/4/2013
DRAWN BY:	E. ALLING
CHECKED BY:	G. GOYETTE
SHEET	10 OF 46