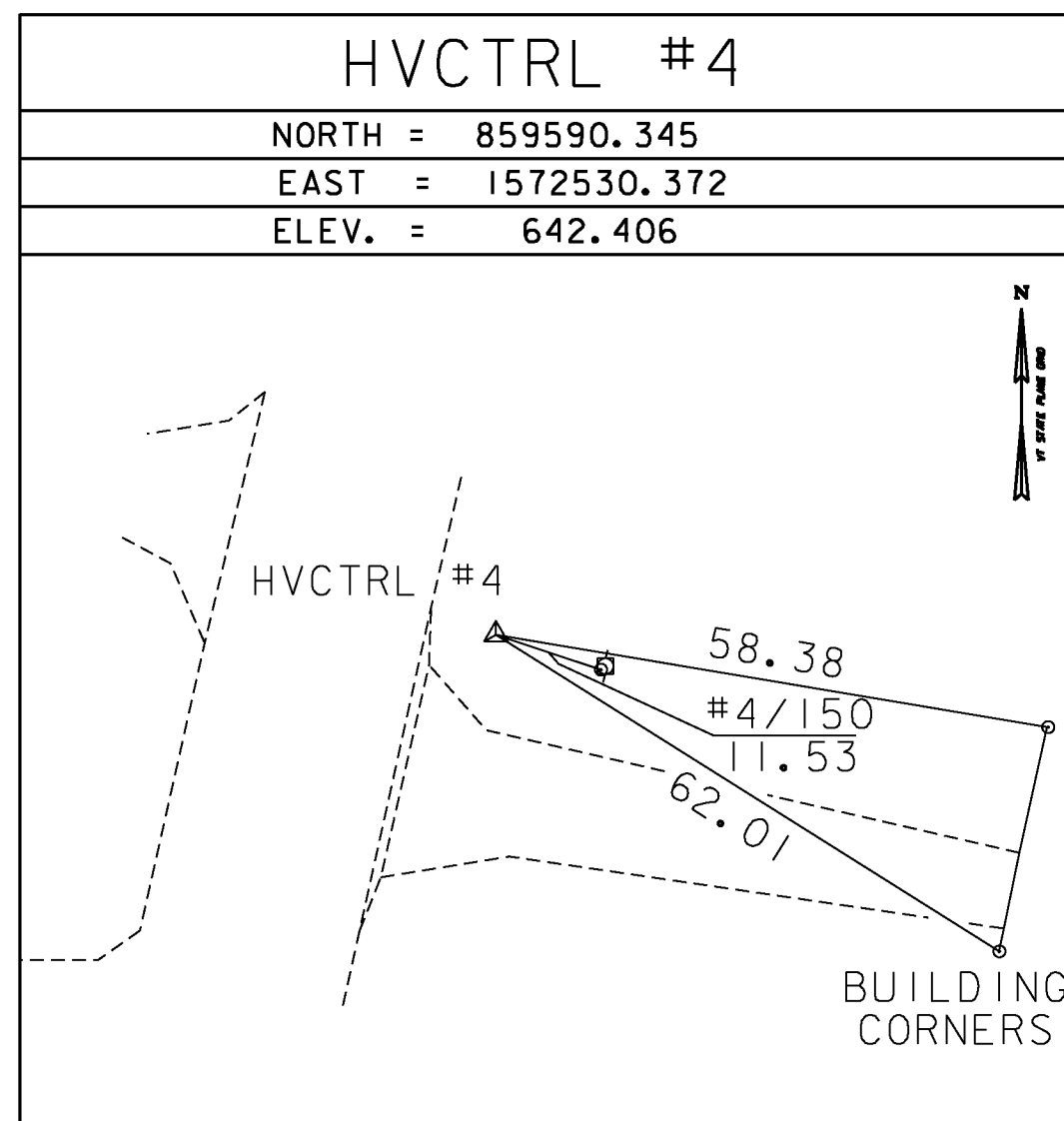
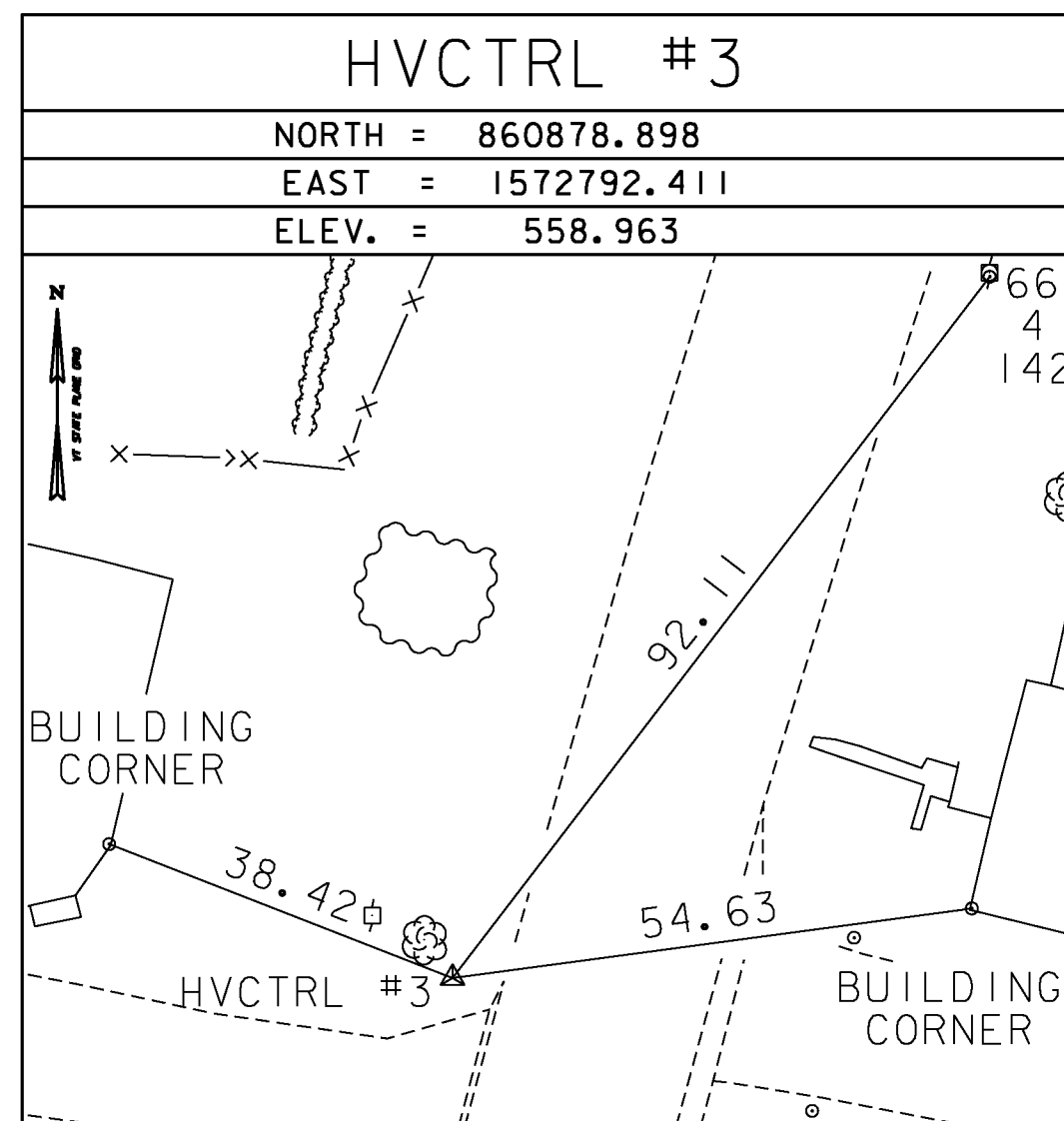
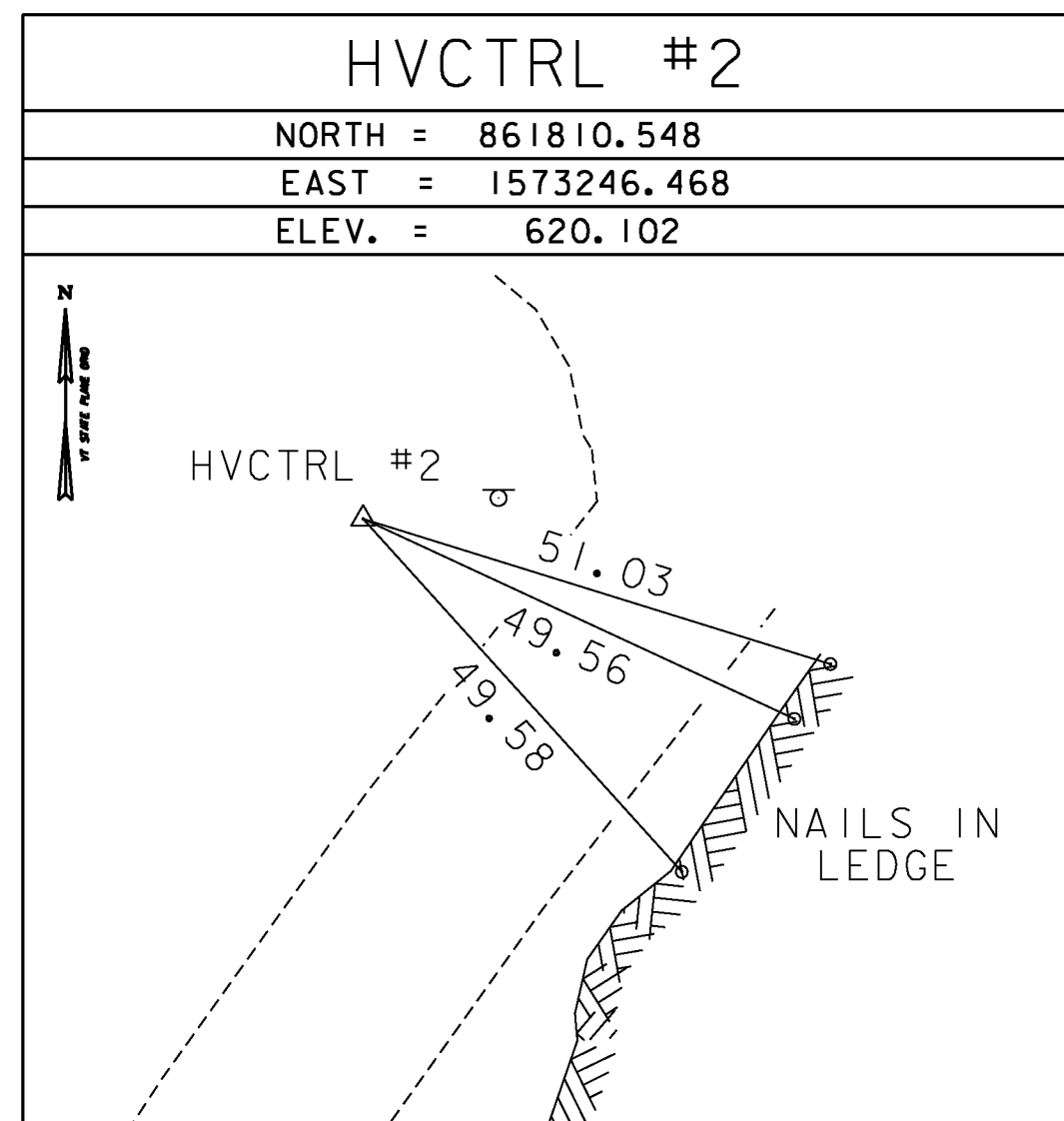
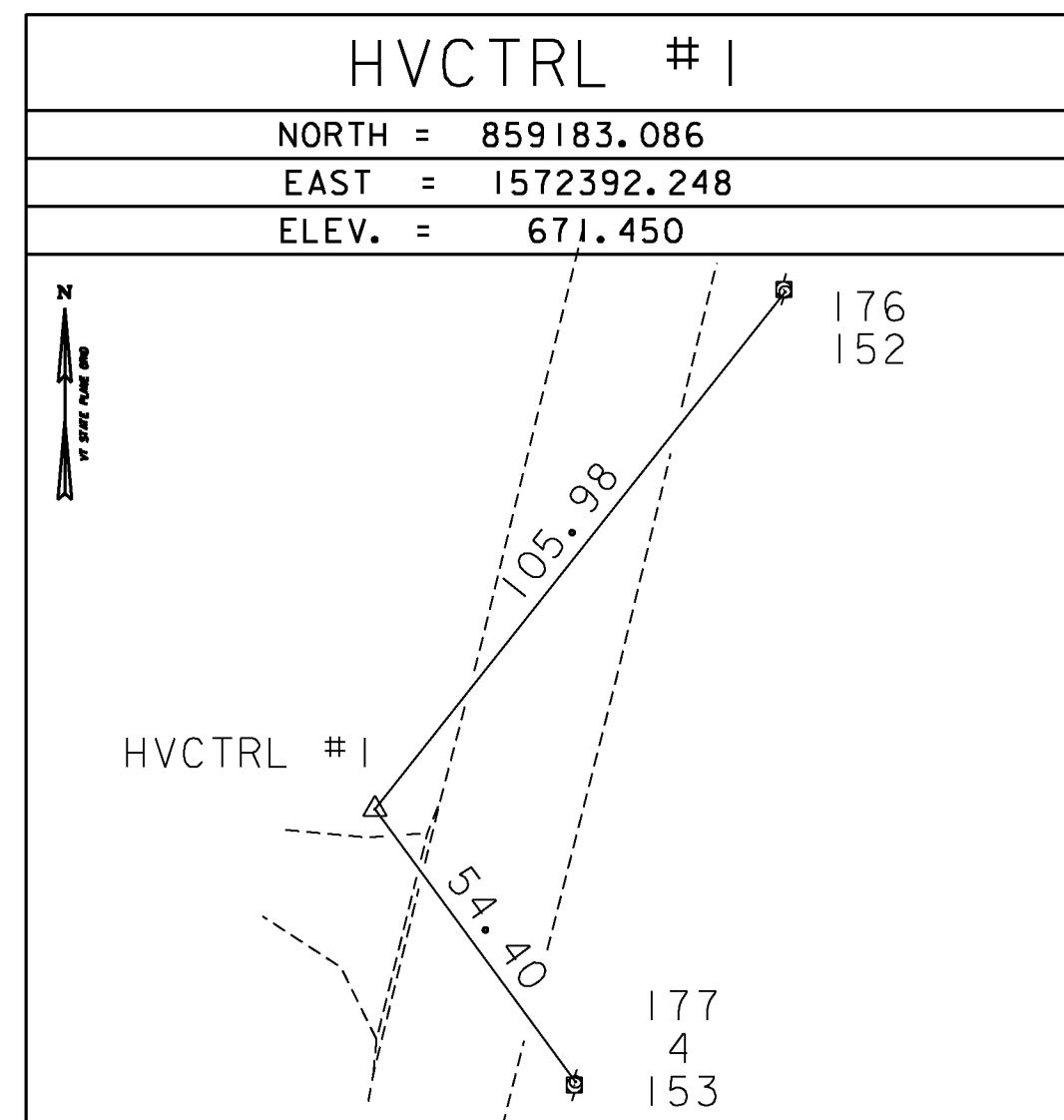


GPS CONTROL POINTS

GENERAL DESCRIPTION: TEMP1
 TO REACH FROM JUNCTION OF VT108 AND TH1 (TYLER BRANCH RD.) IN ENOSBURG PROCEED EAST ALONG TH1 FOR 2.1 MILES TO JUNCTION WITH TH2 (BOSTON POST RD.) AND TURN RIGHT ON TO TH2 PROCEED SOUTH FOR 0.4 MILE TO MARK (REBAR WITH PLASTIC CAP [VTAOT TRAV. PT]) ON THE RIGHT ON THE NORTH EDGE OF GRAVEL DRIVE, 21' WEST OF CENTERLINE TH2, 15' NORTH FROM CENTERLINE GRAVEL DRIVE AND 54.7' NORTHWEST POLE #171/4/153.
 SEE HVCTRL #1 FOR COORDINATES

GENERAL DESCRIPTION: TEMP2
 TO REACH FROM JUNCTION OF VT108 AND TH1 (TYLER BRANCH RD.) IN ENOSBURG PROCEED EAST ALONG TH1 FOR 2.1 MILES TO JUNCTION WITH TH2 (BOSTON POST RD.) AND TURN LEFT AND PROCEED NORTH ALONG TH2 FOR 0.1 MILE TO MARK (REBAR WITH PLASTIC CAP [VTAOT TRAV PT]) ON THE LEFT IN A LAWN, 28' WEST OF CENTERLINE TH2, 32' SOUTH OF CENTERLINE GRAVEL DRIVE, 102' SOUTH OF POLE #5/4A AND 106' NORTHWEST POLE #3.
 SEE HVCTRL #2 FOR COORDINATES

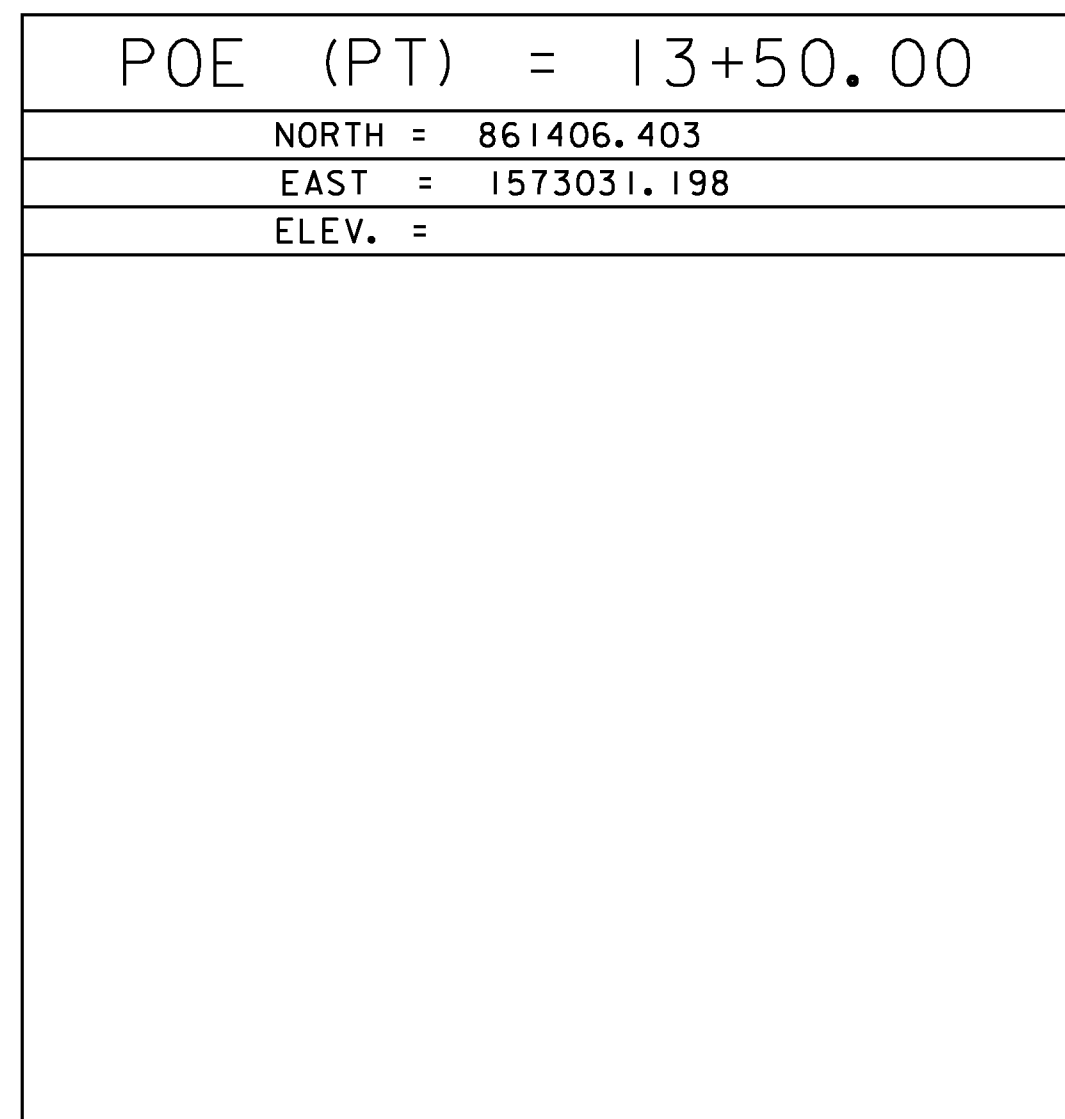
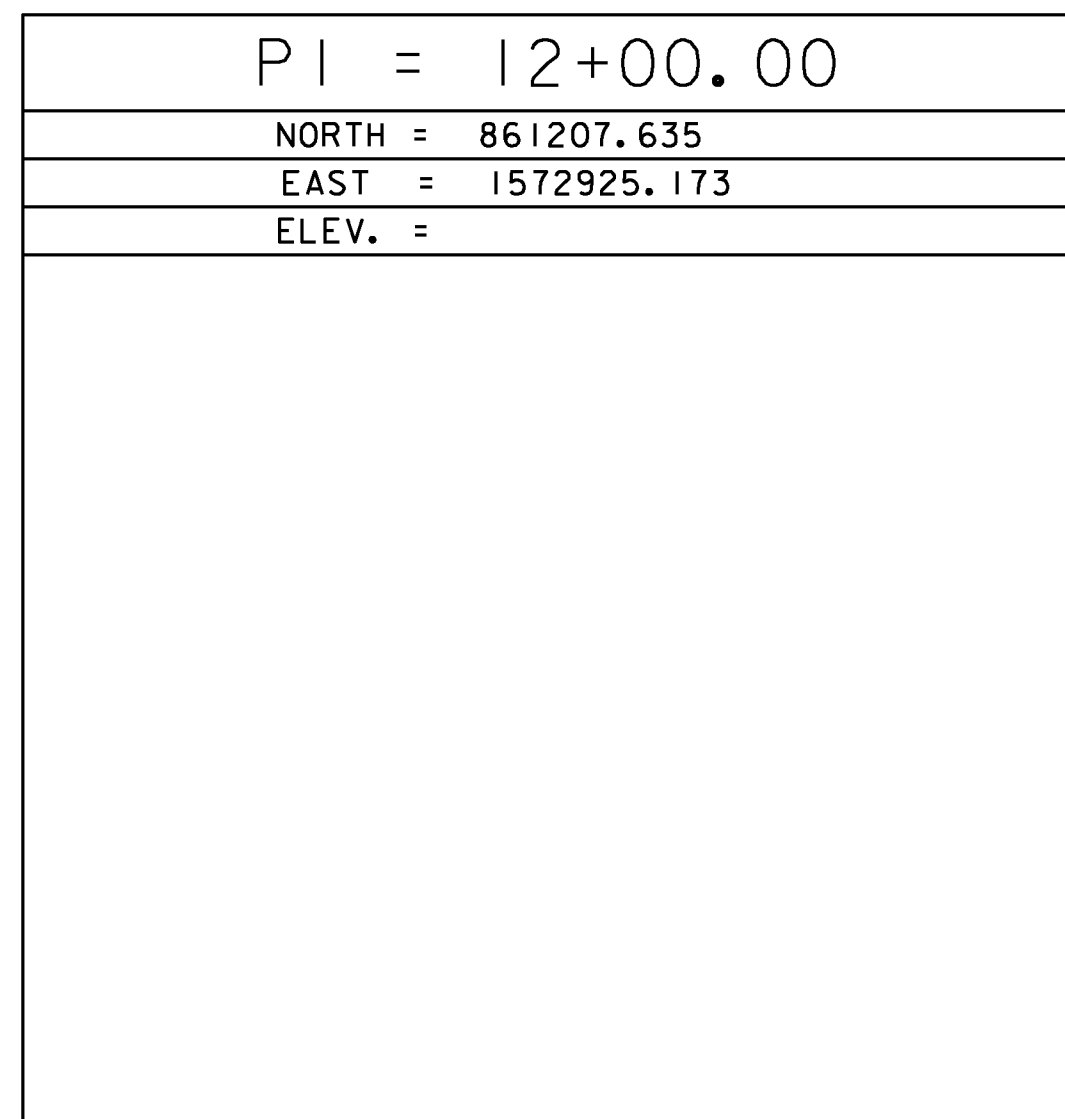
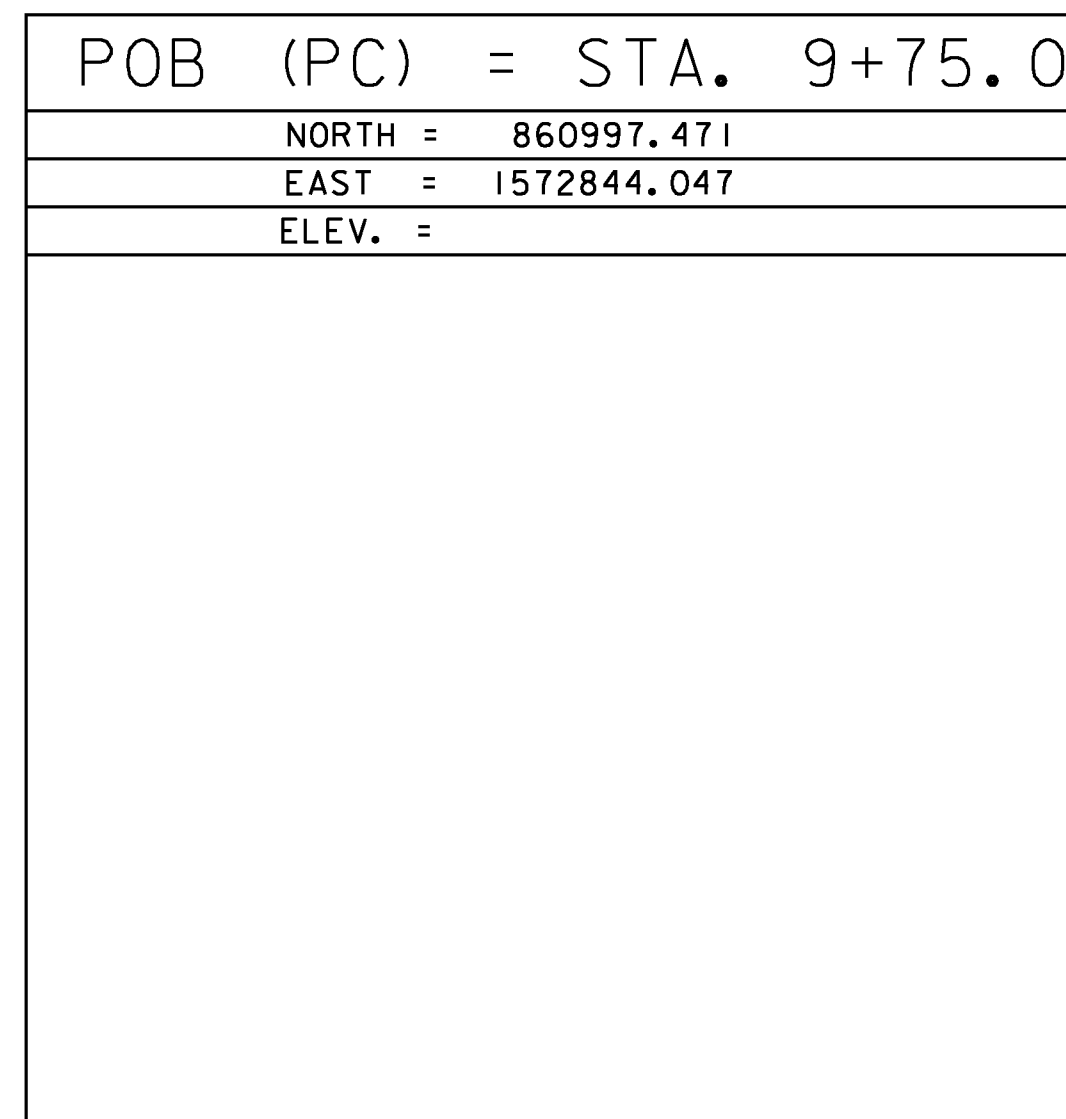
TRAVERSE TIES



NORTH =	
EAST =	
ELEV. =	

*MAIN TRAVERSE COMPLETED 4/11/2012 BY L. ORVIS P.C. & G. HITCHCOCK

ALIGNMENT TIES



NORTH =	
EAST =	
ELEV. =	

NORTH =	
EAST =	
ELEV. =	

COORDINATE SYSTEM
 NAME: US STATE PLANE 1983
 DATUM: NAD 1983(2007)
 ZONE: VERMONT 4400
 GEOID: GEOID09 (CONUS)
 VERTICAL: NAVD 88
 ADJUSTMENT: COMPASS

PROJECT NAME: ENOSBURG
 PROJECT NUMBER: BRO 1448(40)
 FILE NAME: ...Plot Files\... tie sheet.dgn PLOT DATE: 10/4/2013
 PROJECT LEADER: C. WILLIAMS DRAWN BY: R. BULLOCK
 DESIGNED BY: CHECKED BY:
TIE SHEET - TIE 1 SHEET 9 OF 46