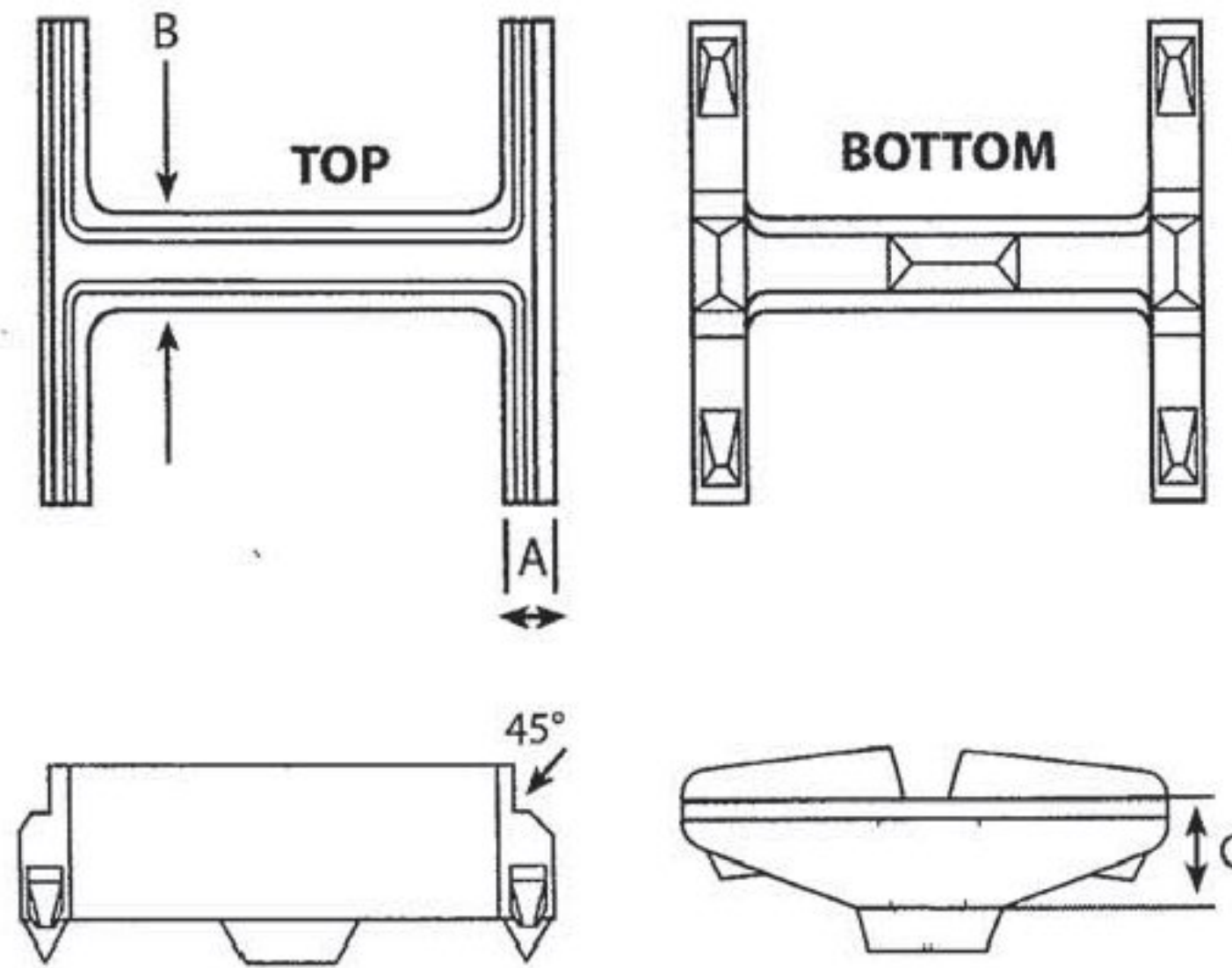


# HARD-BITE POINT

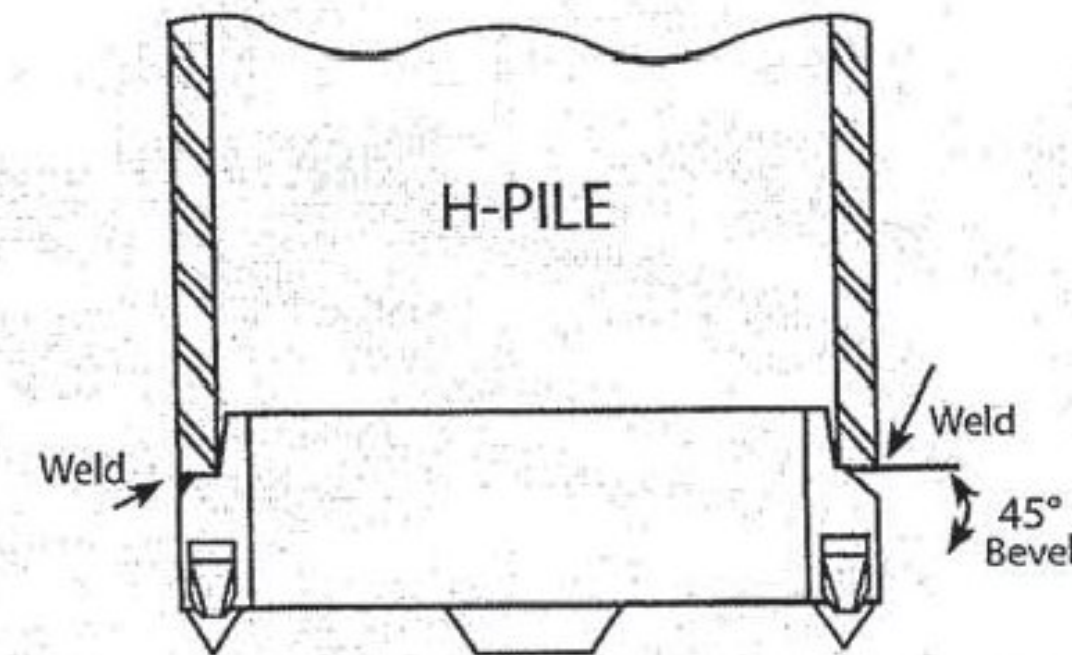
HP 77600-B, HP 77600-B-18#  
HP 77600-B-30#, HP 77600-B-46#



	A	B	C
<b>14" HP</b>			
77600-B	1"	1-1/4"	2-3/4"
77600-B-46#	1-1/2"	1-3/4"	3"
77750-B	1"	1"	4"
<b>12" HP</b>			
77600-B-30#	1"	1-5/16"	3"
77750-B	3/4"	3/4"	3-1/2"
7780-B	3/4"	3/4"	3"
<b>10" HP</b>			
77600-B	1"	1"	2-1/16"
77600-B-18#	1"	1-1/8"	2-3/8"
77750-B	3/4"	3/4"	3"
<b>8" HP</b>			
77600-B	1-1/16"	1"	1-7/16"

## Installation Instructions

- 1.) Fit point onto the end of a square cut pile end.
- 2.) Weld point to the pile in either flat or vertical position using E70XX electrodes.
- 3.) Weld across full width of flange following chart below for minimum size weld.



H-PILE SIZE	FLANGE THICKNESS	MINIMUM SIZE GROOVE WELD
HP 14	.805	7/16
x 117		
x 102	.705	3/8
x 89	.615	3/8
x 73	.505	5/16
HP 12		
x 84	.685	3/8
x 74	.610	3/8

H-PILE SIZE	FLANGE THICKNESS	MINIMUM SIZE GROOVE WELD
HP 12	.515	5/16
x 63		
x 53	.435	5/16
HP 10		
x 57	.565	5/16
x 42	.420	5/16
HP 8		
x 36	.445	5/16