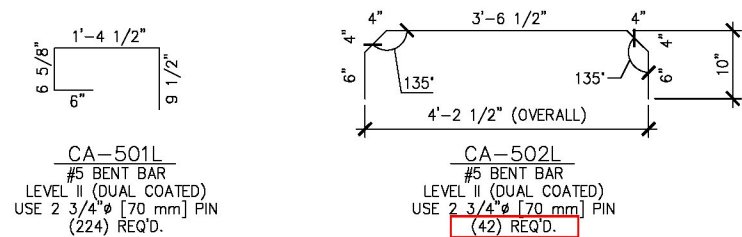


CA-401L
#6 BENT BAR
LEVEL II (DUAL COATED)
USE 2# (50 mm) PIN
(48) RECD

CA-403L
#6 BENT BAR
LEVEL II (DUAL COATED)
USE 2# (50 mm) PIN
(48) RECD



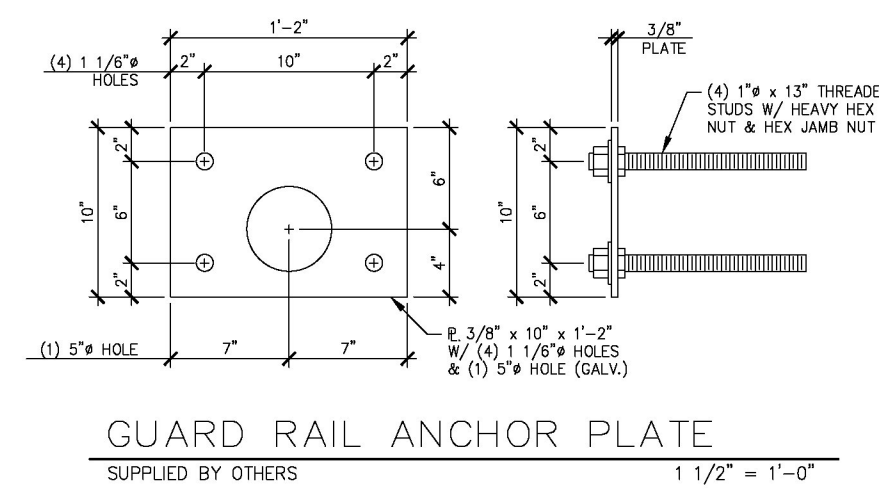
CA-501L
#6 BENT BAR
LEVEL II (DUAL COATED)
USE 2# (50 mm) PIN
(24) RECD

CA-502L
#6 BENT BAR
LEVEL II (DUAL COATED)
USE 2# (50 mm) PIN
(42) RECD

CHANGE ORDER QUANTITY:
LENGTH = 50.5' + 10' + 10' = 70.5' = 5.875 FT / BAR
WEIGHT PER BAR = 5.875 FT * 1.04 LB / FT = 6.11 LB
OF BARS = 2 ENDS * 3 BEAMS * 21 BARS @ EA END = 126 BARS
TOTAL ADDITIONAL WEIGHT = 126 BARS * 6.11 LB / BAR = 769.86 LB = 770 LB

PRESTRESSED NEXT BEAMS

NEXT BEAM MISCELLANEOUS MATERIALS				
ITEM	MARK	QTY.	DESCRIPTION	REMARKS
1		54	#4 x 7'-6 1/2" (LEVEL I, DUAL COATED)	
2				
3		672	#6 x 7'-6 1/2" (LEVEL I, DUAL COATED)	
4		78	#6 x 55'-8" (W/ (1) 2'-8" STAGGERED LAP) (L.V. II, DUAL COATED)	
5				
6		96	#6 x 15'-7" (L.V. I, DUAL COATED)	
7				
8				
9				
10				
11				
12				
13				
14		14	GUARD RAIL ANCHOR PLATE (GALV)	SUPPLIED BY OTHERS. SEE DETAIL THIS SHEET
15		12	SET OF (4) 0.875" x 270 KIB STRAND LIFTING LOOPS	
16		12	2" I.D. PVC SLEEVE	
17				
18				
19				
20				



GUARD RAIL ANCHOR PLATE
SUPPLIED BY OTHERS
1 1/2" = 1'-0"

01-28-15 REVISED

APPROVAL STAMP:

Vermont Agency of Transportation
RECEIVED
CK'D BY GL OK'D BY JS
January 29, 2015
RESUBMIT NO Approved AsNoted
BY KH DATE 2-3-2015

J.P. CARRARA & SONS INC. Precast & Prestress Manufacturer 244 ONE ST. WOODBURY, VT 05255 Phone: (802)388-4361 Fax: (802)388-9010	BLOW & COTE, INC. CONTRACTOR MORRISVILLE, VERMONT
STATE OF VERMONT AGENCY OF TRANSPORTATION COUNTY OF LAMOILLE	DATE: JAN. 28, 2015 SCALE: NOTED
TOWN OF CAMBRIDGE IRISH SETTLEMENT ROAD T.H.46 CLASS 3 BRIDGE NO.: 28 PROJECT NO.: BRO 1448(39)	CHKD: RM DFTM: PSS JOB NO: 23447-014
MATERIALS LIST	DWG. NO: M1