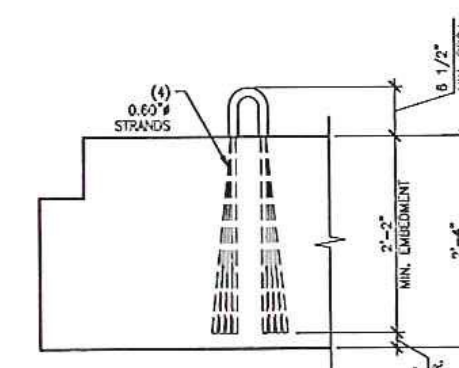
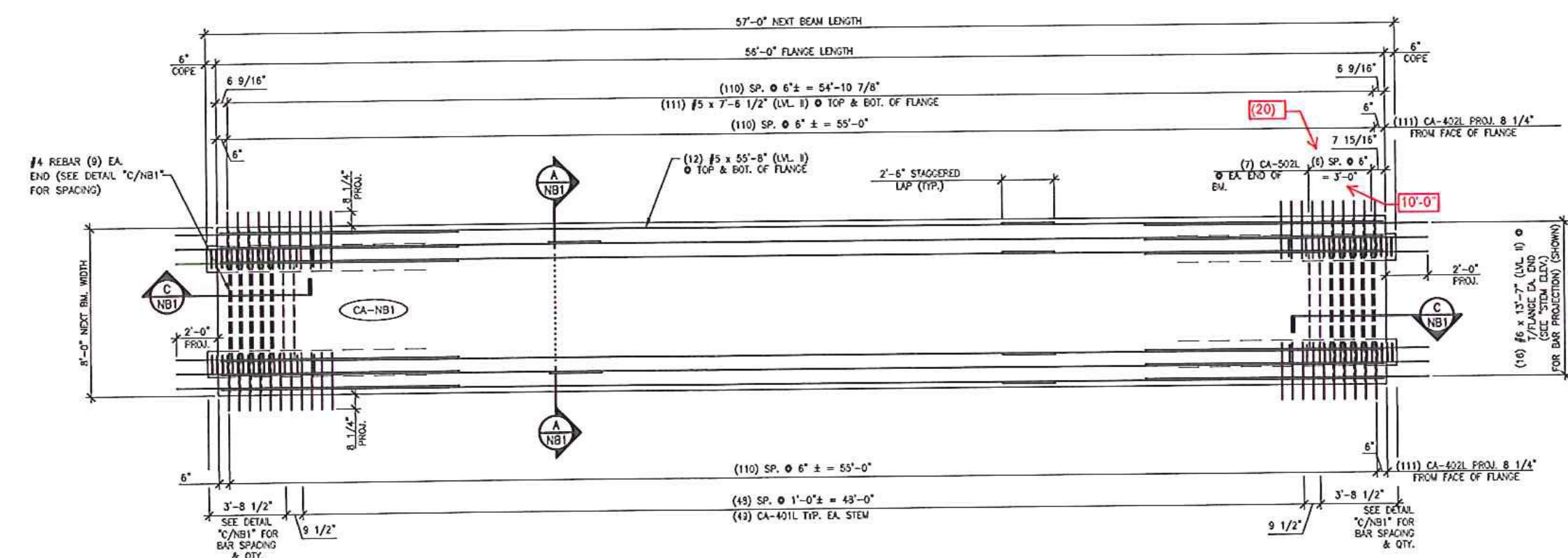


1 DIMENSIONAL PLAN VIEW IN FORM
1/4" = 1'-0"



A LIFT LOOP DETAIL
3/4" = 1'-0"



2 REINFORCING PLAN VIEW IN FORM
1/4" = 1'-0"

MARK: CA-NB1 QTY: 1 WT: 38.61 T VOL: 19.06 cy

ITEM	MARK	DESCRIPTION	QTY.
1	CA-40L	#4 BENT BAR (LEVEL 4, DUAL COATED)	168
2	CA-40L	#4 BENT BAR (LEVEL 4, DUAL COATED)	222
3	CA-40L	#4 BENT BAR (LEVEL 4, DUAL COATED)	16
4	CA-50L	#5 BENT BAR (LEVEL 4, DUAL COATED)	14
5	#4	#4 x 7'-6 1/2" (LEVEL 4, DUAL COATED)	18
6	#4	#4 x 7'-6 1/2" (LEVEL 4, DUAL COATED)	6
7	#5	#5 x 7'-6 1/2" (LEVEL 4, DUAL COATED)	224
8	#5	#5 x 55'-8" (#1) 2'-6" SHOULDER LAP (LEVEL 4, DUAL COATED)	24
9			
10			
11	#5	#5 x 12'-7" (LEVEL 4, DUAL COATED)	32
12			
13	#2 x 10	#2 x 10 PVC SLIDER	4
14	SET OF (4)	SET OF (4) 2x8x8 x 210 KIP STRAND LIFTING LOOPS	4
15			

05-7-15 REMOVED CROWN FROM NEXT BH.
01-28-15 REVISED

Vermont Agency of Transportation
RECEIVED

CK'D BY GL OK'D BY JS
May 18, 2015
RESUBMIT NO Approved AsNoted
BY KH DATE 05/18/2015

Submitted
5-15-15
J.P. CARRARA & SONS, Inc.
MIDDLEBURY, VT 05753

APPROVAL STAMP:

J.P. CARRARA & SONS, INC.
Precast & Prestress Manufacturer
404 ONE ST. WASHINGTON, VERMONT 05673 PH: (802) 888-4341 FAX: (802) 888-9210

BLOW & COTE, INC.
CONTRACTOR
MORRISVILLE, VERMONT

STATE OF VERMONT AGENCY OF TRANSPORTATION
COUNTY OF LAMOILLE

TOWN OF CAMBRIDGE
IRISH SETTLEMENT ROAD T.H.46 CLASS 3
BRIDGE NO.: 28 PROJECT NO.: BRO 1448(39)

DATE: JUN. 28, 2015
SCALE: NOTED
CHKD: RM DFTM: PSS
JOB NO: 23447-014
DWG. NO: NB2

PRESTRESSED NEXT BEAM DETAILS