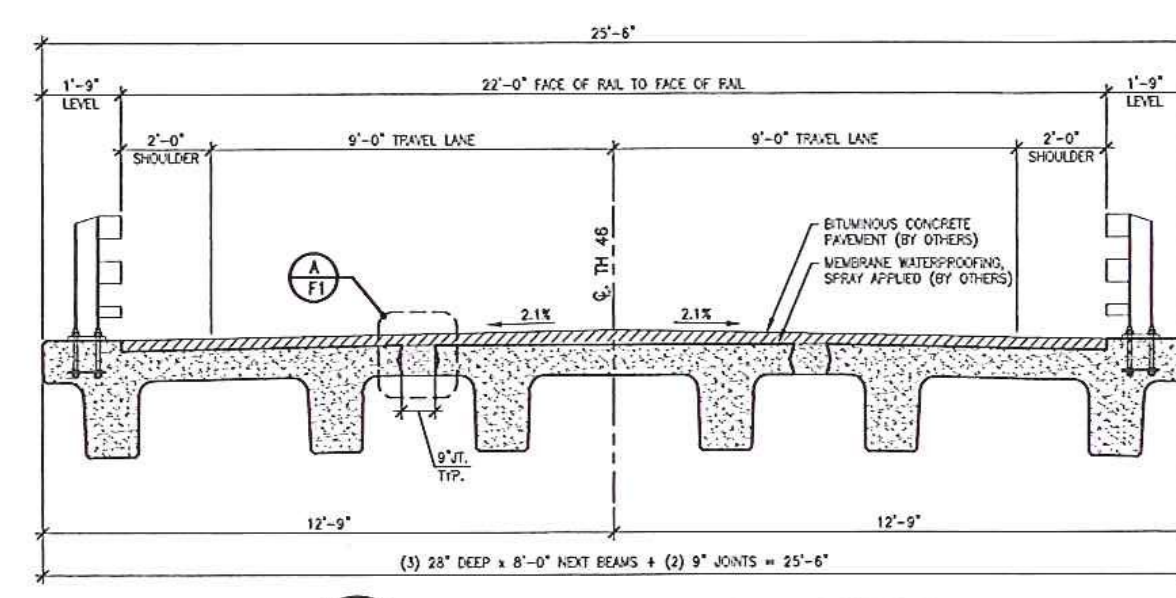
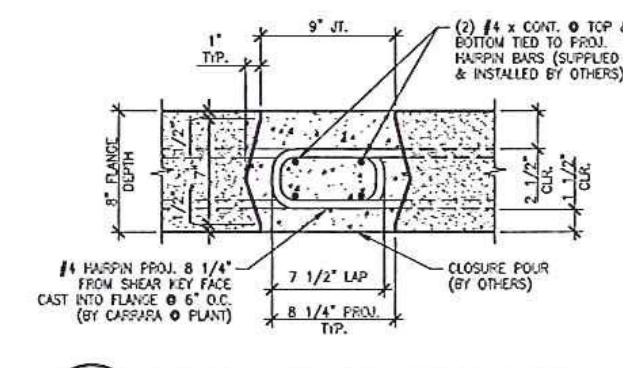


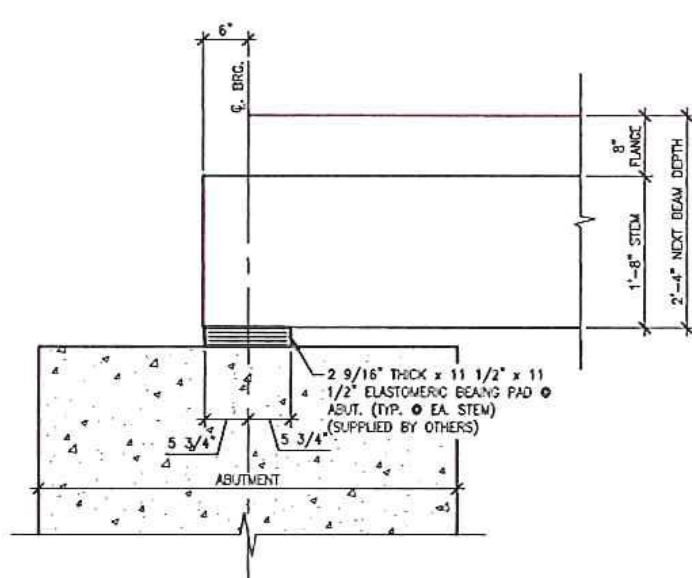
1 NEXT BEAM LAYOUT  
1/4" = 1'-0"



2 TRANSVERSE NEXT BEAM SECTION  
3/8" = 1'-0"



A NEXT BEAM CLOSURE POUR  
1 1/2" = 1'-0"



B BEARING DETAIL  
3/4" = 1'-0"

05-7-15 REVISED CROWN FROM NEXT BR.  
01-28-15 REVISED

APPROVAL STAMP:  
**RECEIVED**  
 Vermont Agency of Transportation  
 CR'D BY GL OK'D BY JS  
 May 18, 2015  
 RESUBMIT NO Approved  
 BY KH DATE 5-19-2015

J.P. CARRARA & SONS INC.  
 Precast & Prestress Manufacturer  
 484 DIX ST. WINDHAM, VERMONT 05751 PH: (802)388-4361 FX: (802)388-9115

BLOW & COTE, INC.  
 CONTRACTOR  
 MORRISVILLE, VERMONT

STATE OF VERMONT AGENCY OF TRANSPORTATION  
 COUNTY OF LAMOILLE

TOWN OF CAMBRIDGE  
 IRISH SETTLEMENT ROAD T.H.46 CLASS 3  
 BRIDGE NO.: 28 PROJECT NO.: BRD 1448(32)

PRESTRESSED NEXT BEAM LAYOUT

DATE: JAN. 28, 2015  
 SCALE: NOTED  
 CHK'D: RM DFTM: PSS  
 JOB NO: 23447-014  
 DWG. NO: F1

Submitted  
5-15-15

J. P. CARRARA & SONS, INC.  
MORRISVILLE, VT 05753