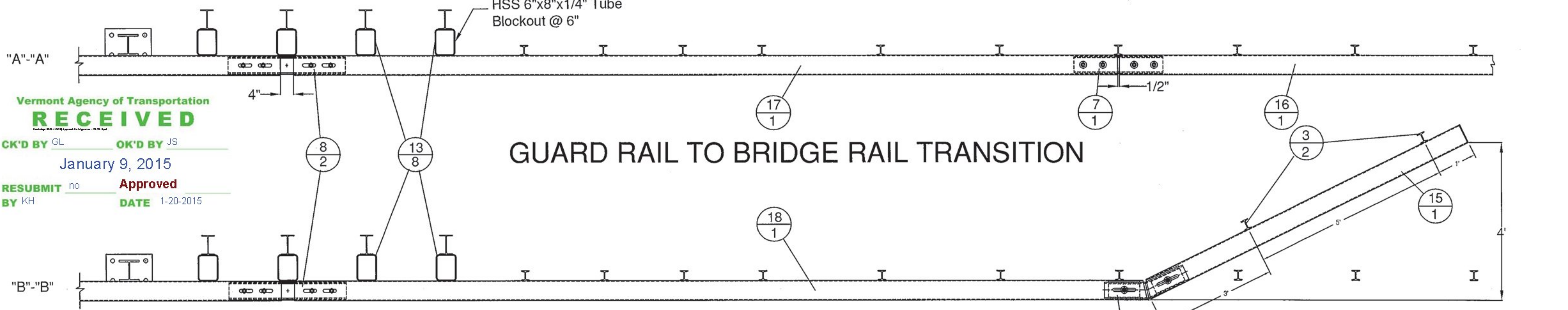
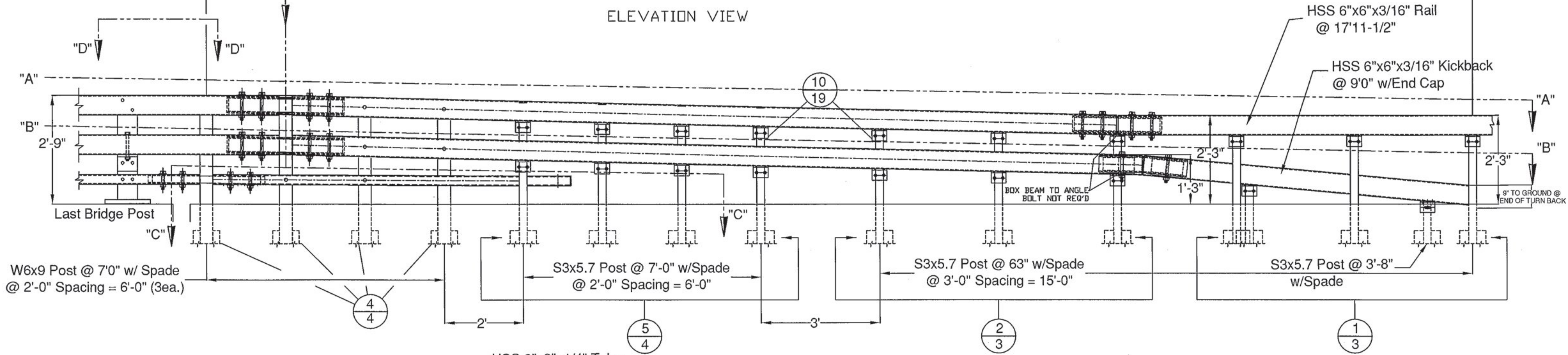
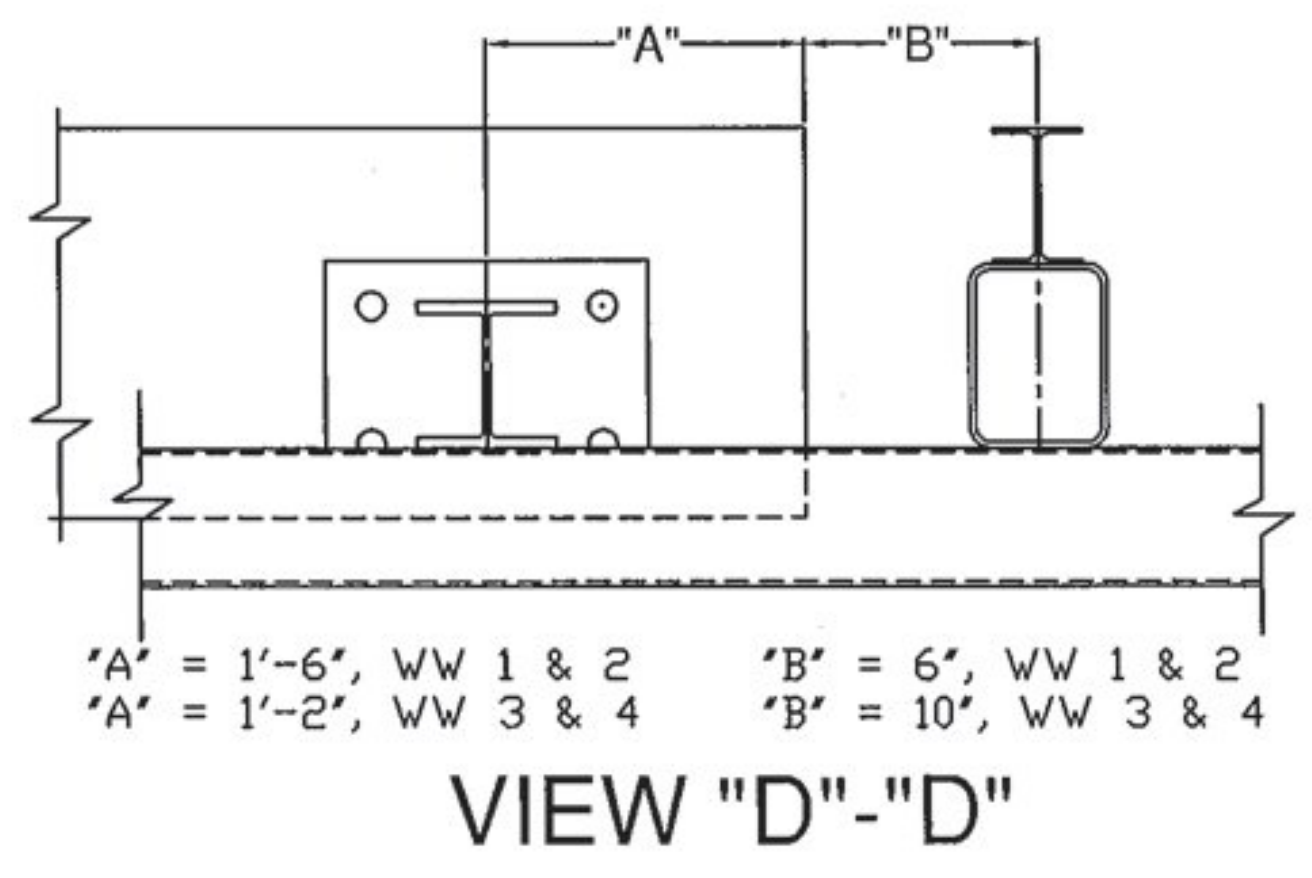


32' - PAY LIMIT FOR TRANSITION - BRIDGE RAILING TO BOX BEAM GUIDE RAIL

ELEVATION VIEW



GUARD RAIL TO BRIDGE RAIL TRANSITION



*A' = 1'-6", WW 1 & 2 *B' = 6", WW 1 & 2
 *A' = 1'-2", WW 3 & 4 *B' = 10", WW 3 & 4

VIEW "D"-D"

Vermont Agency of Transportation
RECEIVED
 CK'D BY GL OK'D BY JS
 January 9, 2015
 RESUBMIT no Approved
 BY KH DATE 1-20-2015

ITEM #: 621.725
 STRUCTURAL STEEL TO COMPLY W/ ASTM A6
 TOLERANCE UNLESS OTHERWISE NOTED:
 FRACTIONS = ± 1/16"
 ANGLES = ± 1/2"
 DIAMETERS = ± 1/32"

SHEET 1 OF 5

GUARD RAIL TO BRIDGE RAIL TRANSITION DETAILS SHEET
 TOWN HIGHWAY 46 (IRISH SETTLEMENT ROAD), BRIDGE # 28
 TOWN OF CAMBRIDGE, COUNTY OF LAMOILLE, VT.

R NO.	DATE	DESCRIPTION	BY	R NO.	DATE	DESCRIPTION	BY
E 1	1/7/15	REVISED PER 12/29/14 MARK-UP	EP	E 1			

DRAWN	E.P.	12/3/14
CHECKED	D.L.	12/3/14
APPROVED		
SCALE	SCHEMATIC	
DRAWING NO. F.R.L.-CAMBRIDGE-T		

ELDERLEE, INC.
 OAKS CORNERS, NEW YORK 14518
 E-Mail: dlong@elderlee.com / epEEK@elderlee.com
 Tel: 315-789-6670 Fax: 315-789-6615