

GPS CONTROL POINTS

12J166 AZ MK

12J166

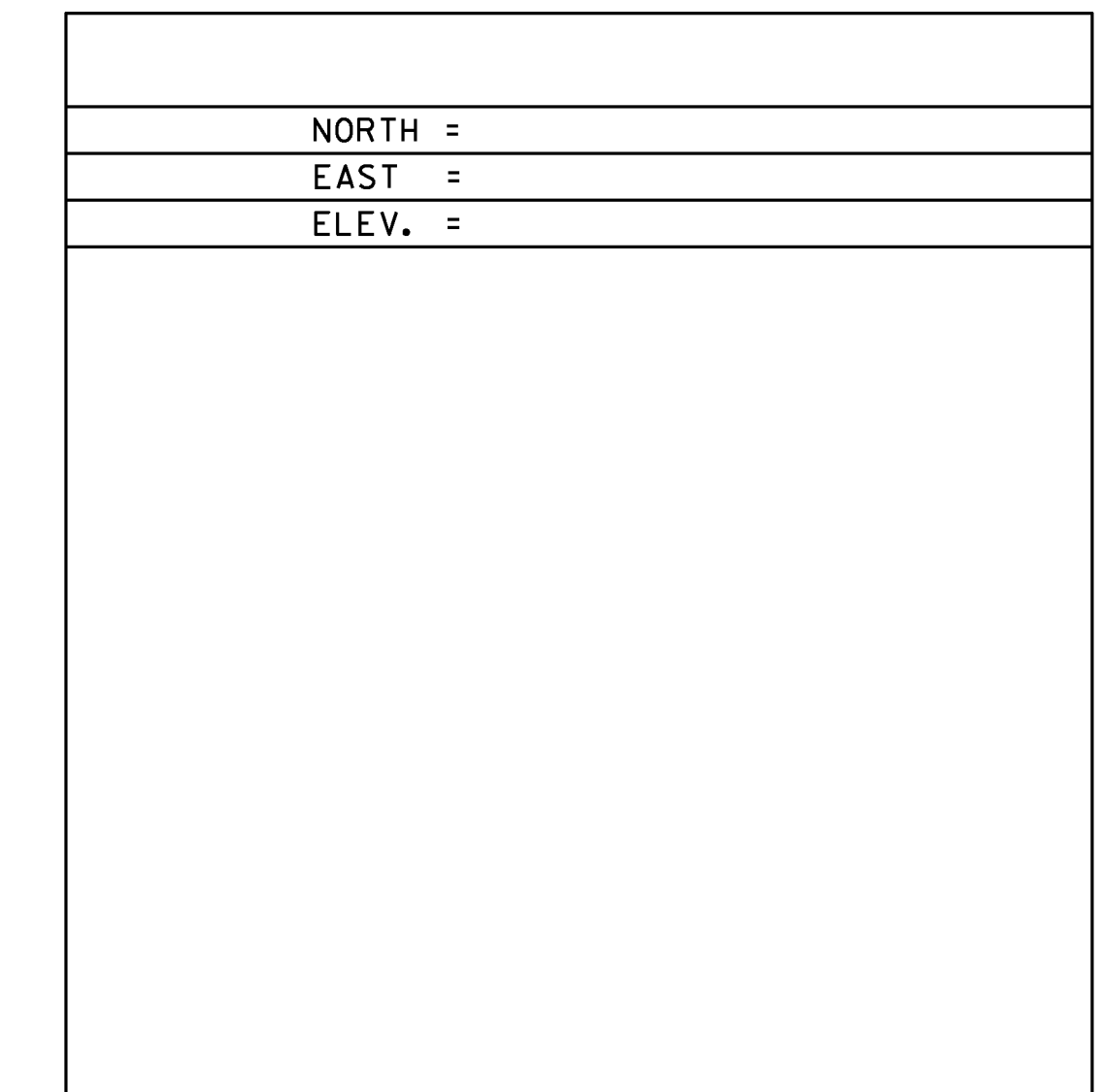
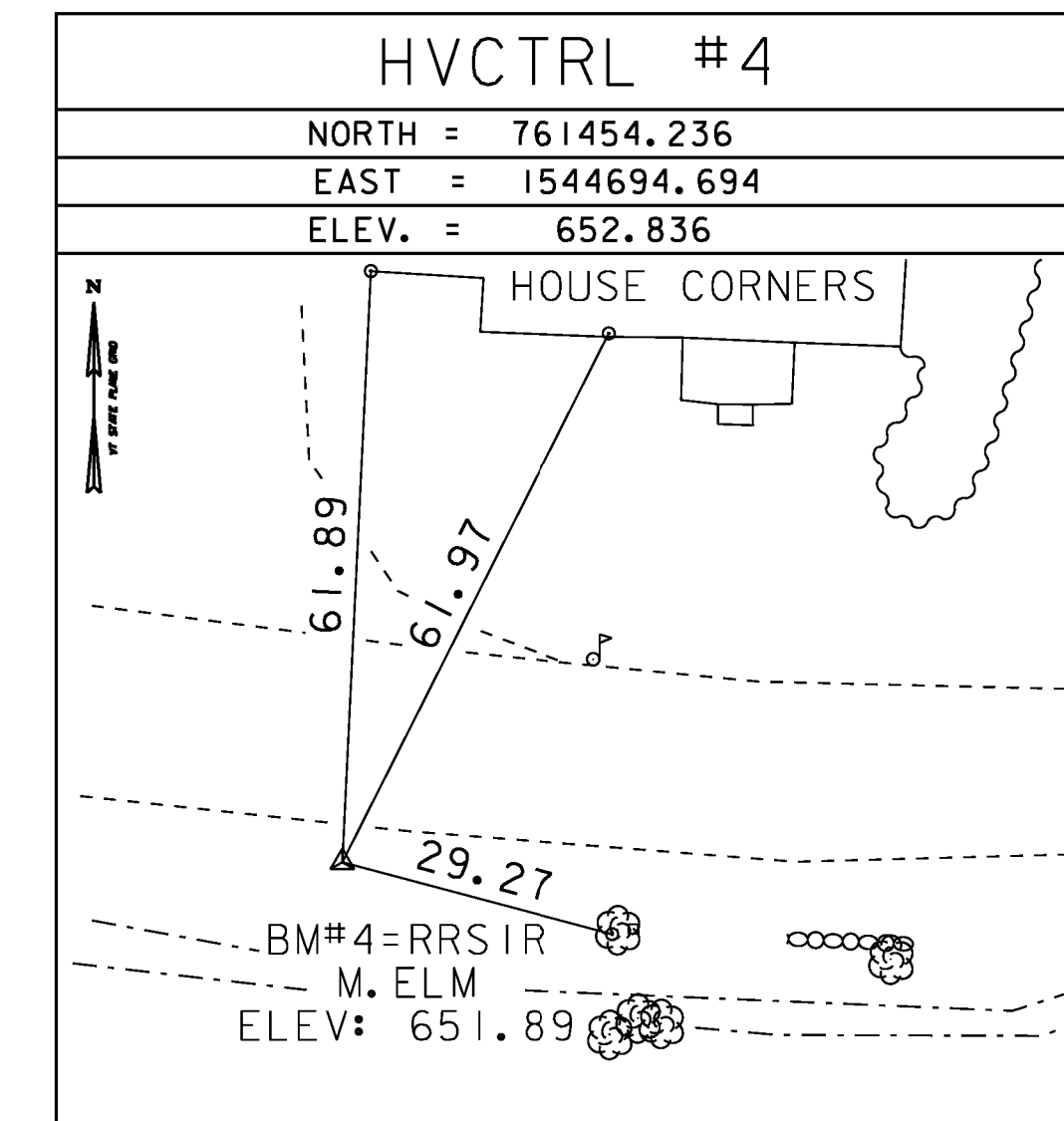
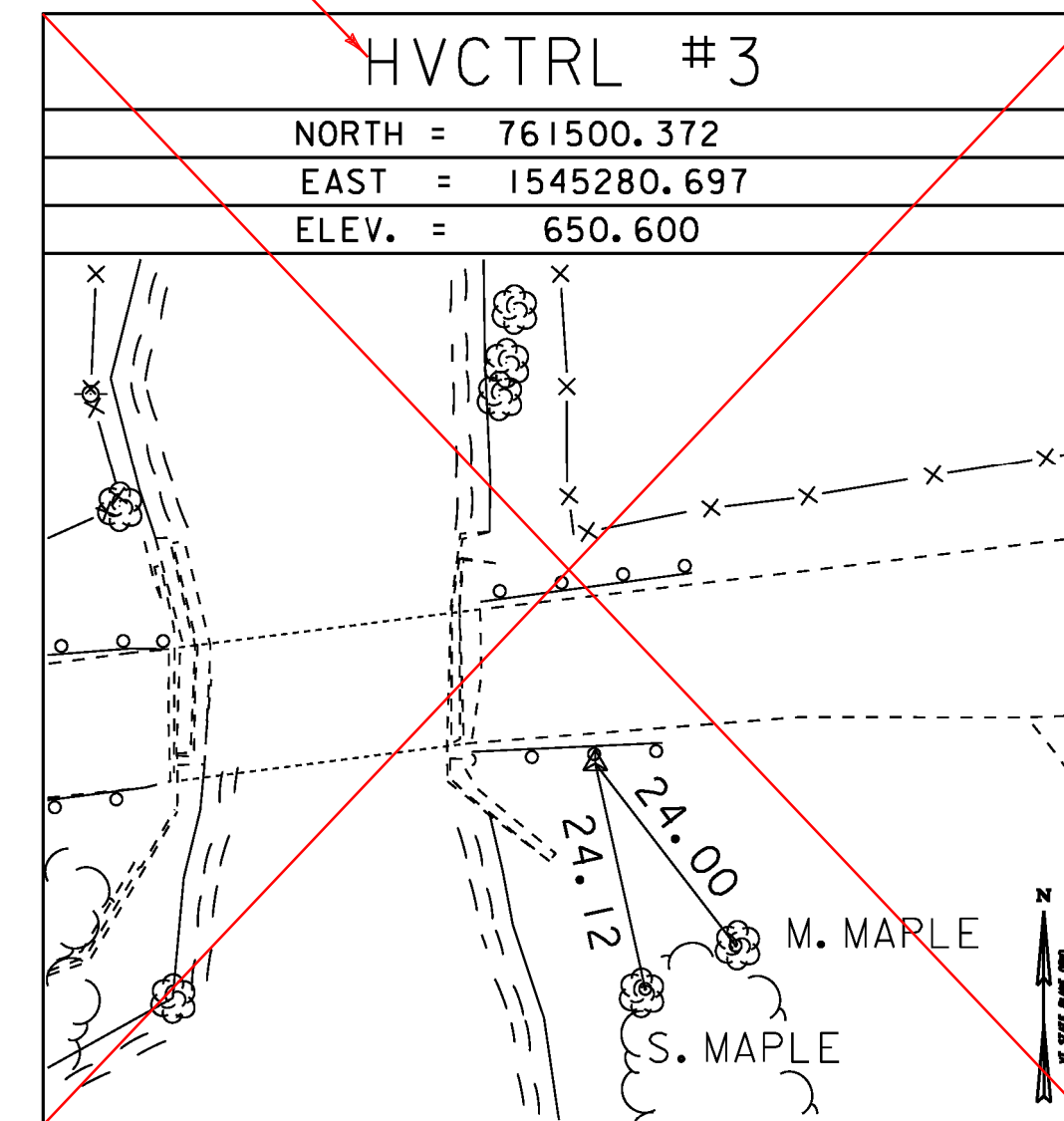
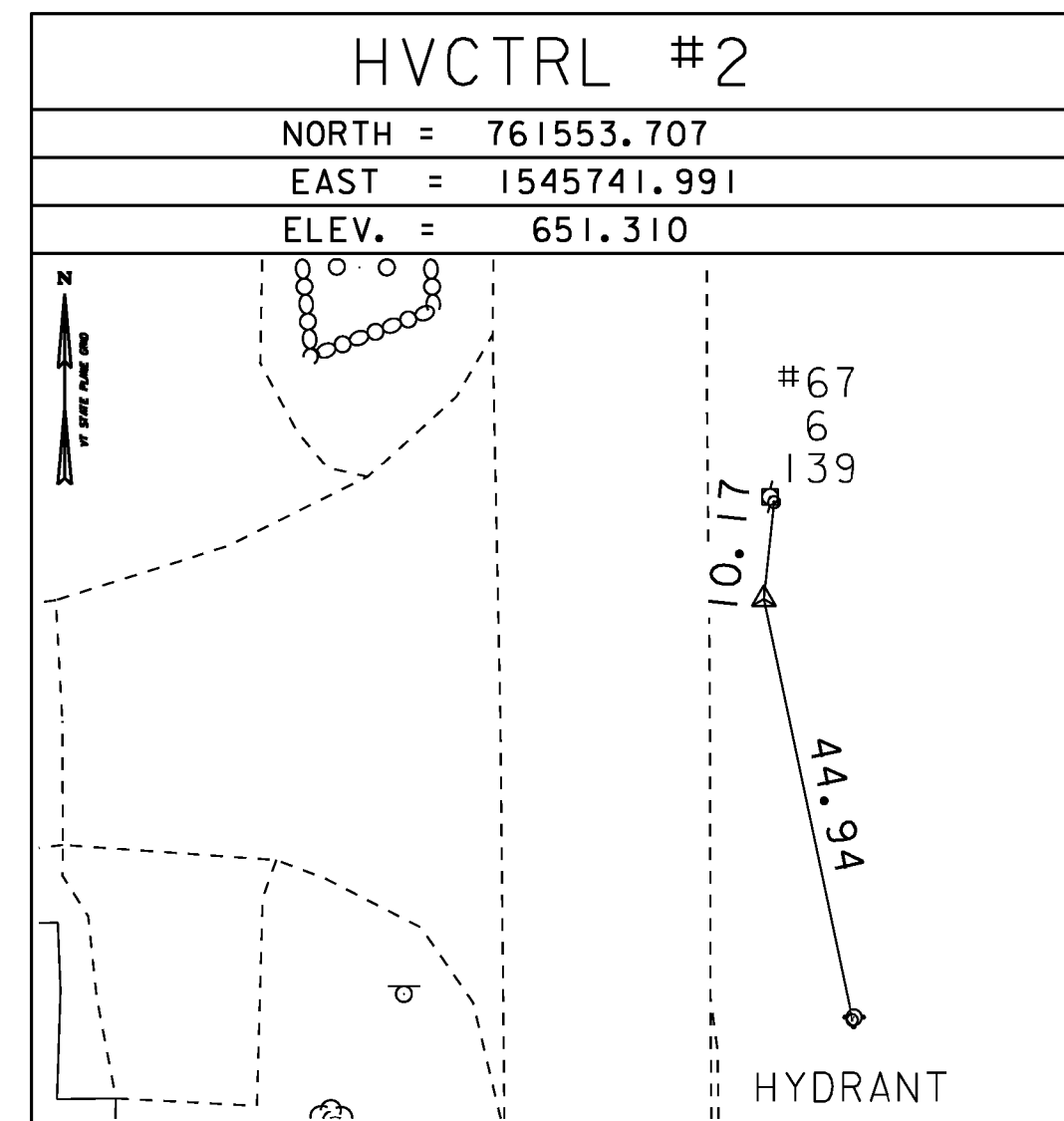
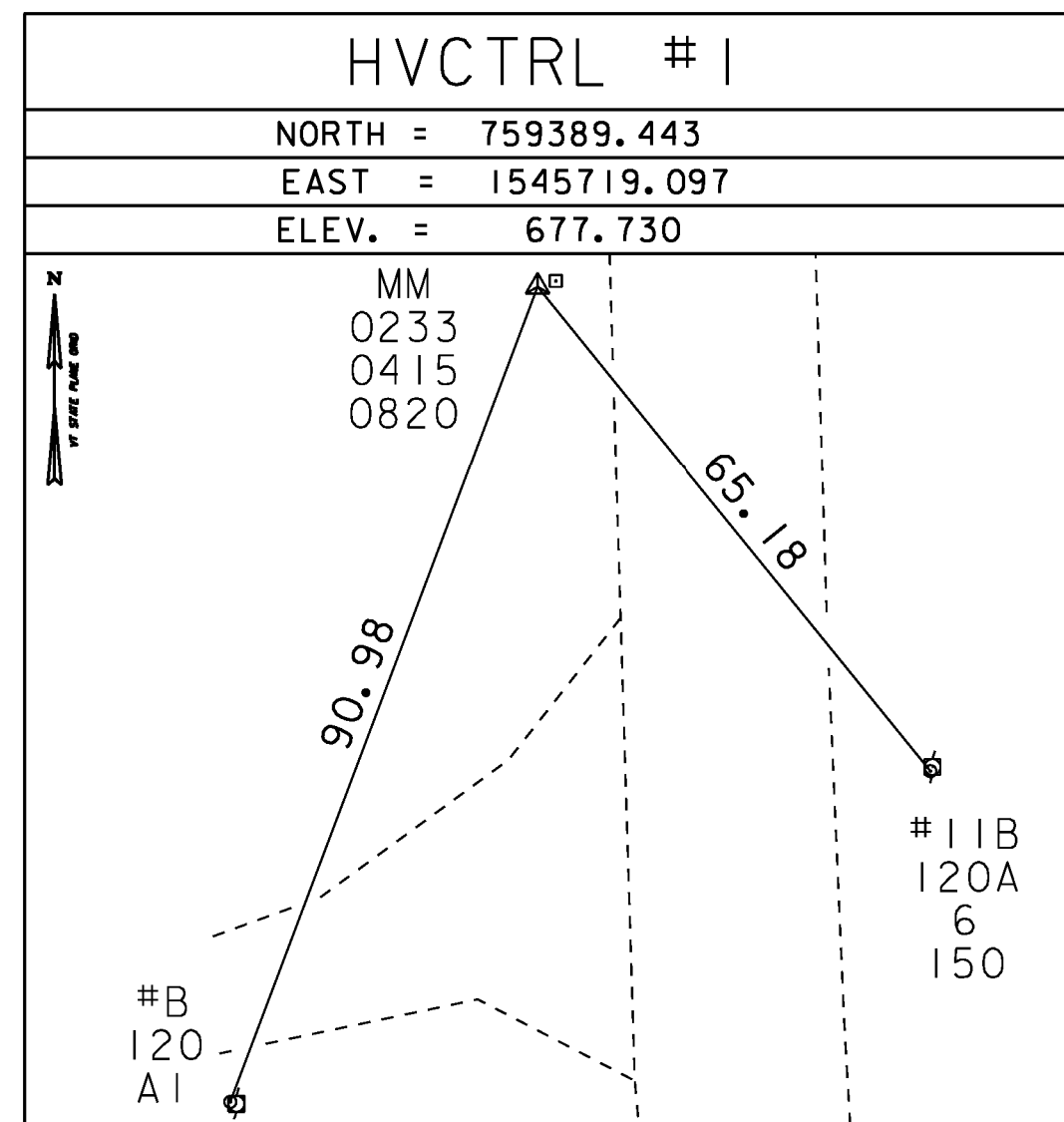
GENERAL LOCATION CAMBRIDGE VT  
 TO REACH FROM THE INTERSECTION OF VT ROUTE 15 WEST AND VT ROUTE 108 SOUTH IN CAMBRIDGE GO WEST ON VT ROUTE 15 FOR 2.3 MILES TO THE INTERSECTION OF LOWER PLEASANT VALLEY ROAD LEFT TURN LEFT ON LOWER PLEASANT VALLEY ROAD CONTINUE ON LOWER PLEASANT VALLEY ROAD FOR 4.0 MILE TO THE INTERSECTION OF PLEASANT VALLEY ROAD TURN RIGHT ON PLEASANT VALLEY ROAD GO 0.7 MILES TO THE SIGHT OF THE MARK ON THE RIGHT. ON THE EDGE OF A FIELD. ABOUT 0.1 MILES SOUTH OF THE CAMBRIDGE UNDERHILL TOWN LINE.  
 THE MARK IS A REBAR DRIVEN FLUSH INTO THE GROUND W/ A RED PLASTIC CAP (VT AOT TRAV PT)

THE MARK IS 5.5 METER EAST OF CENTERLINE OF THE ROAD AND ABOUT 1.0 METER LOWER THEN THE ROAD 20.0 METERS NORTH WEST AND ACROSS THE ROAD FROM OF POLE # 11B/120A/6/150 20.10 SOUTH WEST OF A GRAVEL DRIVE 72.80 METER NORTH EAST OF POLE # 1/B/120/A1 0.6 METERS EAST OF MILE MARKER 0233/0415/0820. SEE HVCTRL #1 BELOW FOR COORDINATES

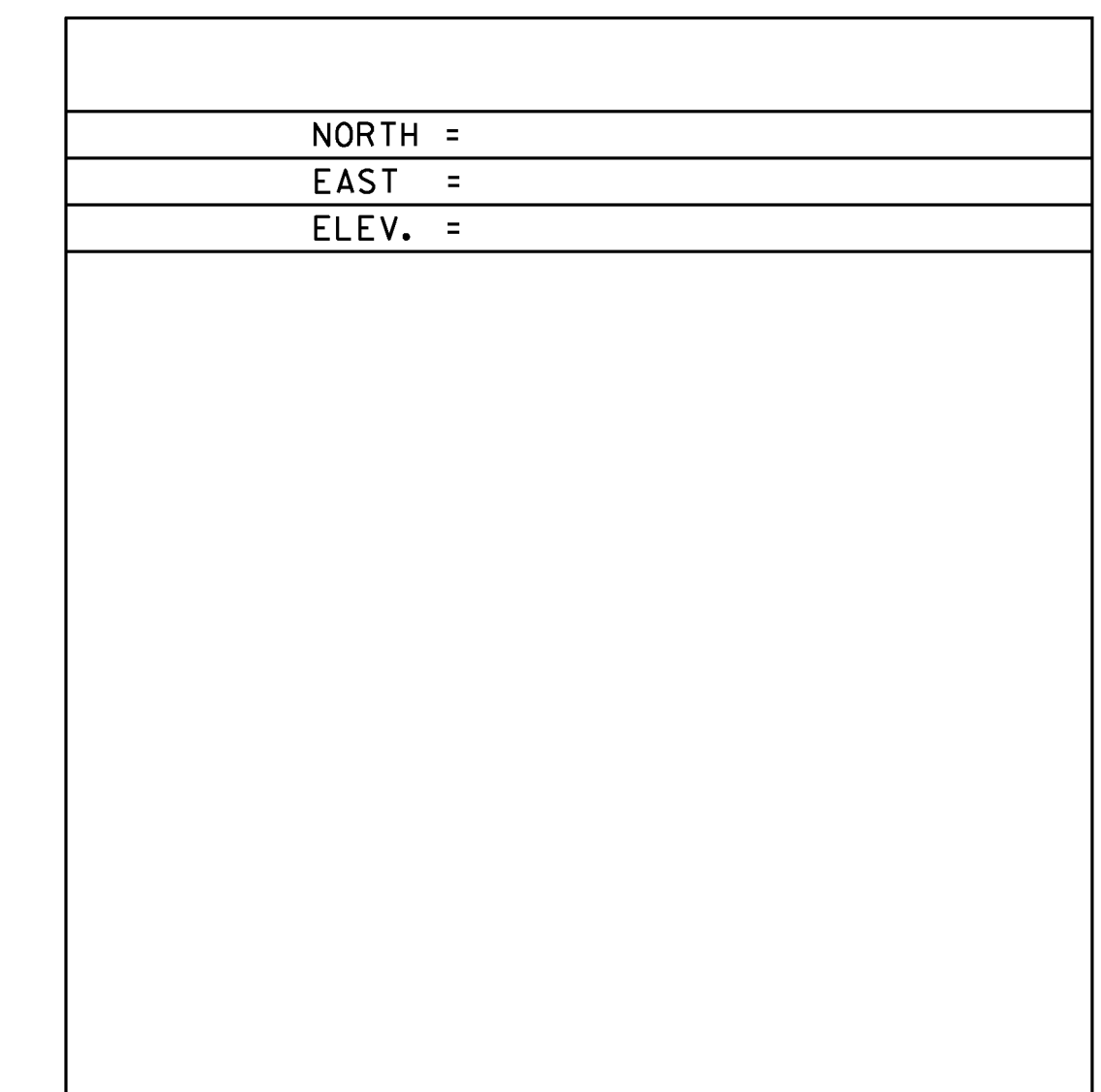
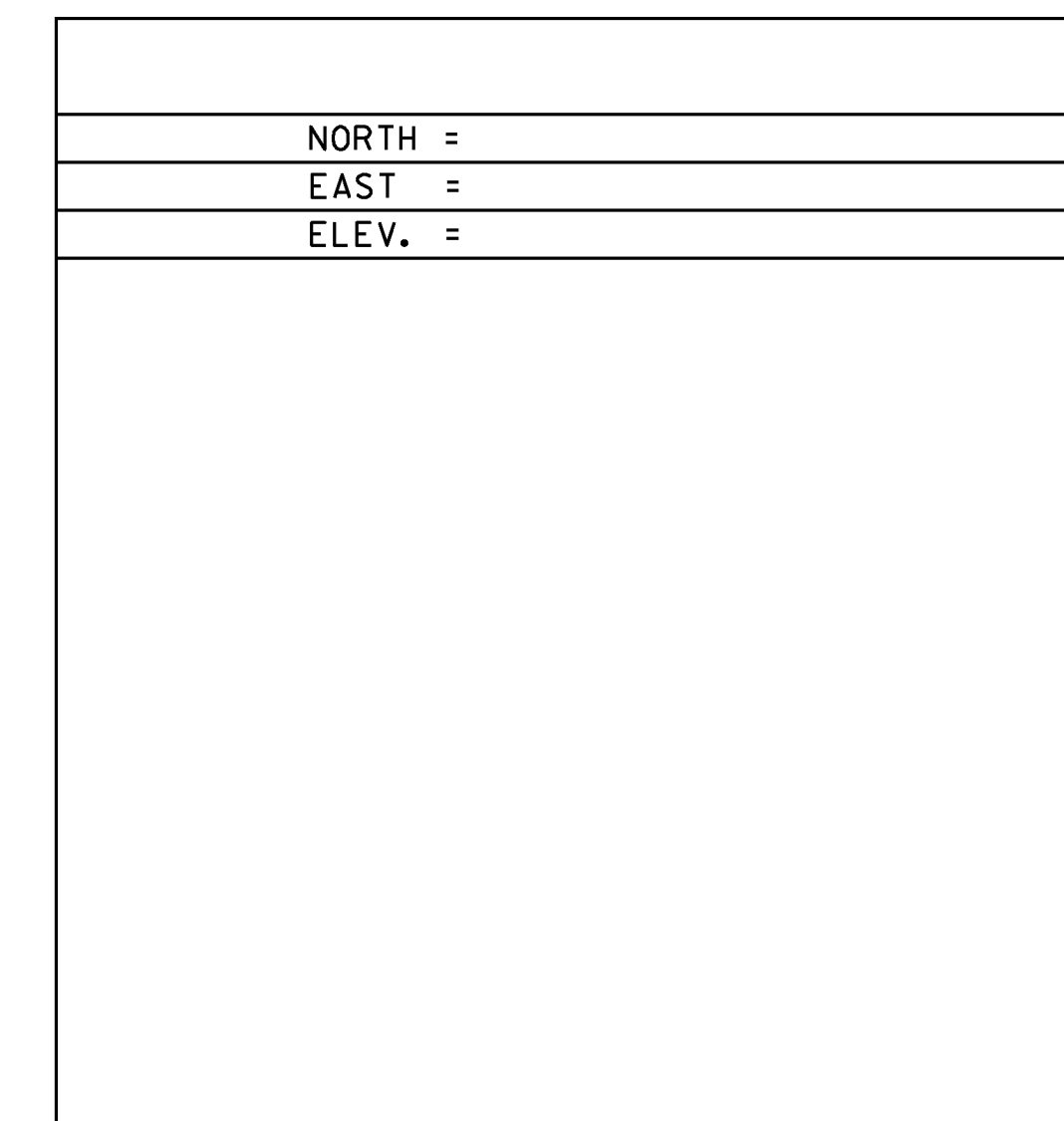
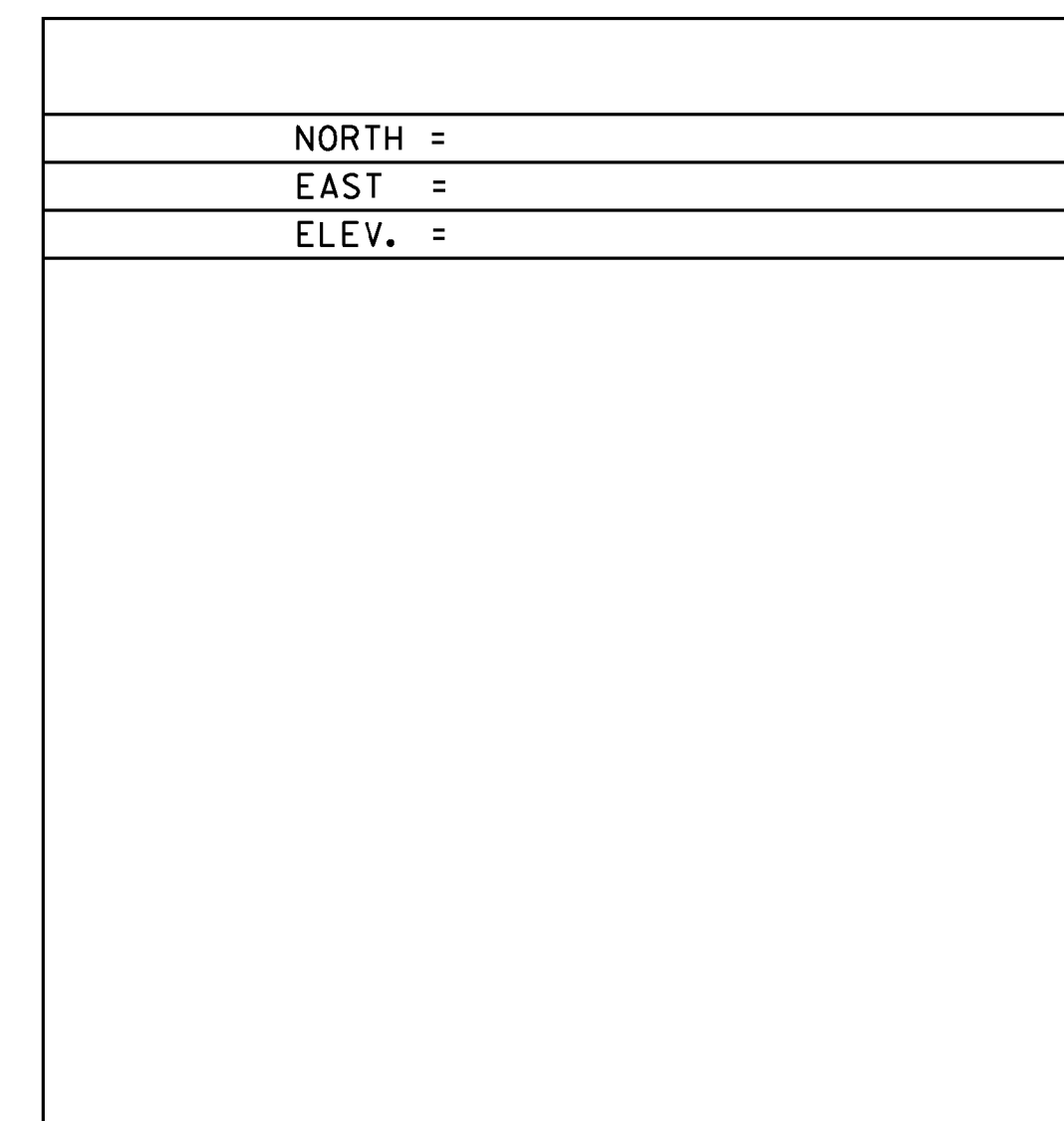
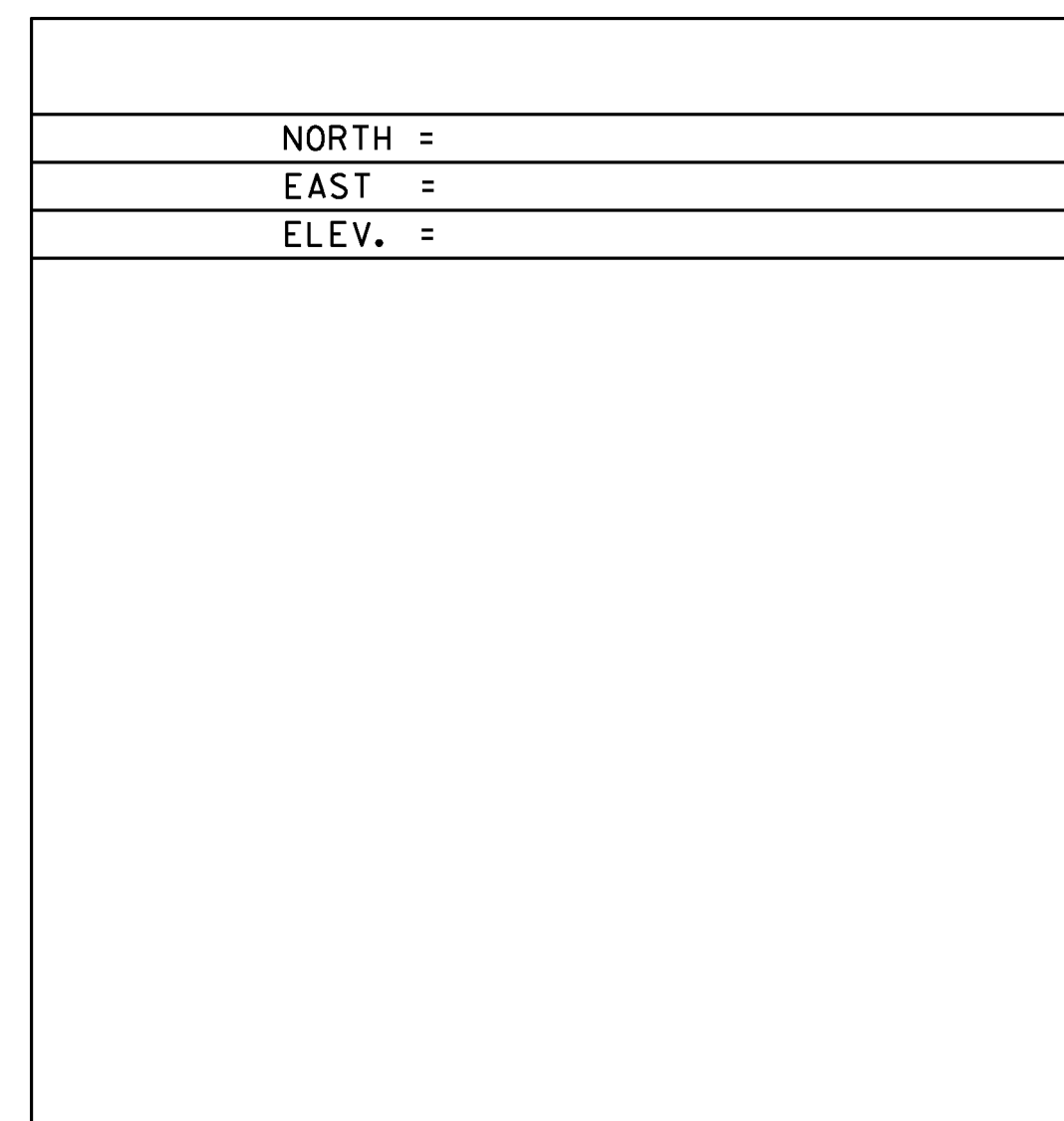
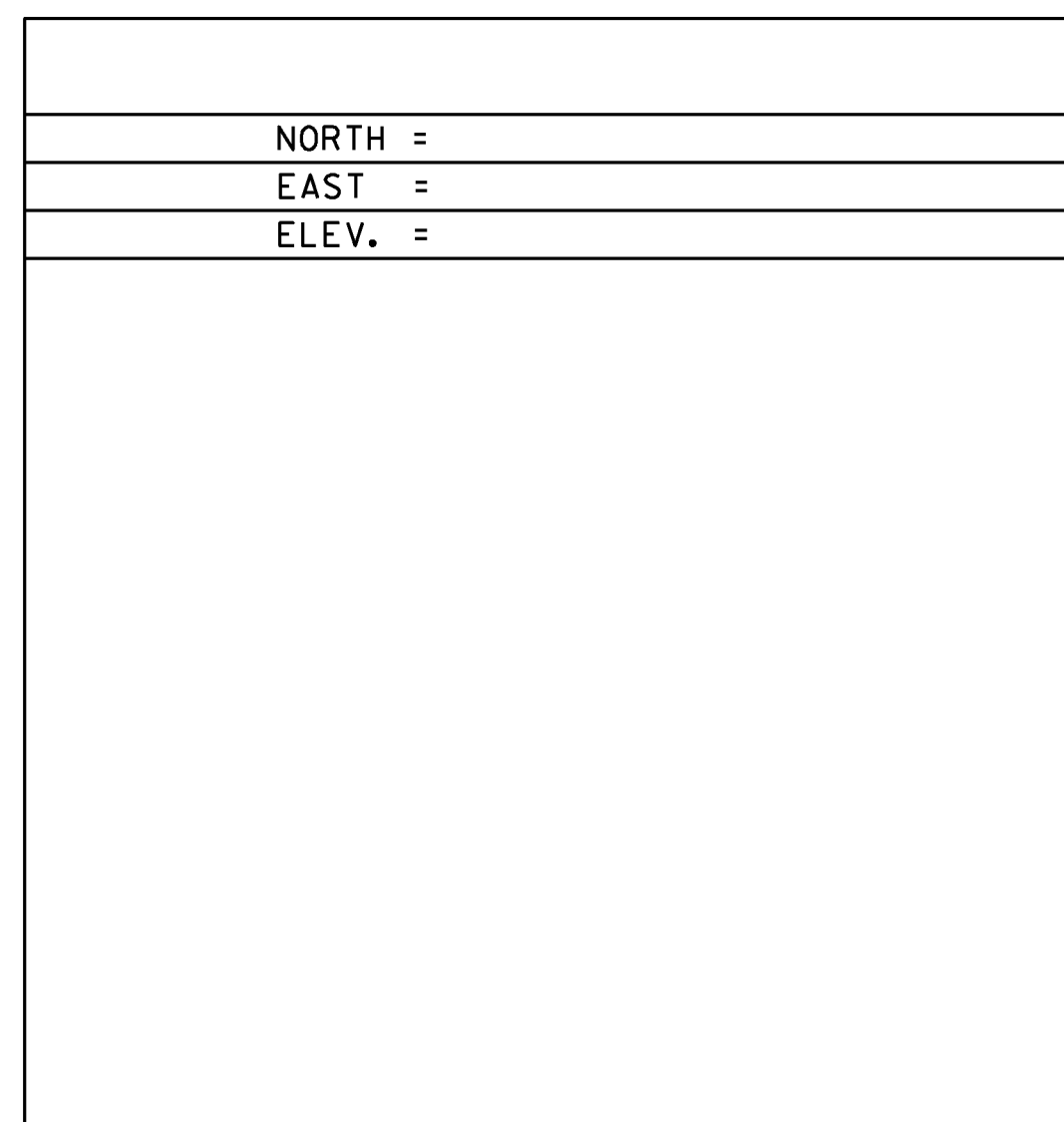
GENERAL LOCATION CAMBRIDGE VT  
 TO REACH FROM THE INTERSECTION OF VT ROUTE 15 WEST AND VT ROUTE 108 SOUTH IN CAMBRIDGE GO WEST ON VT ROUTE 15 FOR 2.3 MILES TO THE INTERSECTION OF LOWER PLEASANT VALLEY ROAD LEFT TURN LEFT ON LOWER PLEASANT VALLEY ROAD CONTINUE ON LOWER PLEASANT VALLEY ROAD FOR 4.0 MILE TO THE INTERSECTION OF PLEASANT VALLEY ROAD TURN RIGHT ON PLEASANT VALLEY ROAD GO 0.2 MILES TO THE SIGHT OF THE MARK ON THE LEFT ON THE EDGE OF A FIELD ACROSS FROM IRISH SETTLEMENT ROAD AND THE VALLEY DREAM FARM AND APPROXIMATELY 0.2 MILE NORTH OF THE UNDERHILL CAMBRIDGE TOWN LINE  
 THE MARK IS A REBAR DRIVEN FLUSH INTO THE GROUND W/ A RED PLASTIC CAP (VT AOT TRAV PT)  
 THE MARK IS 5.4 METERS EAST OF THE CENTERLINE OF THE ROAD AND 0.3 METER LOWER THEN CENTERLINE 3.1 METER SOUTH SOUTHEAST OF POLE # 67/6/139 13.8 METER NORTH OF FIRE HYDRANT 25.0 METER EAST AND ACROSS THE ROAD FROM THE NORTH EAST CORNER OF A BARN/GARAGE ATTACHED TO A HOUSE 16.0 METER SOUTHEAST AND ACROSS THE ROAD OF THE EAST SIDE OF A SIGN FOR VALLEY DREAM FARM AND ABOUT 20 METER NORTH OF A FIELD DRIVE. SEE HVCTRL #2 BELOW FOR COORDINATES.

LOST IN CONSTRUCTION

TRAVERSE TIES



ALIGNMENT TIES



DATUM  
 VERTICAL NAVD 88  
 HORIZONTAL NAD 83 (07)  
 ADJUSTMENT COMPASS

PROJECT NAME: CAMBRIDGE  
 PROJECT NUMBER: BRO 1448 (39)  
 FILE NAME: x12j166+1.dgn PLOT DATE: 29-AUG-2014  
 PROJECT LEADER: K. HIGGINS DRAWN BY: R. BULLOCK  
 DESIGNED BY: G. LAROCHE CHECKED BY: P. BEYOR  
 TIE SHEET SHEET 8 OF 34