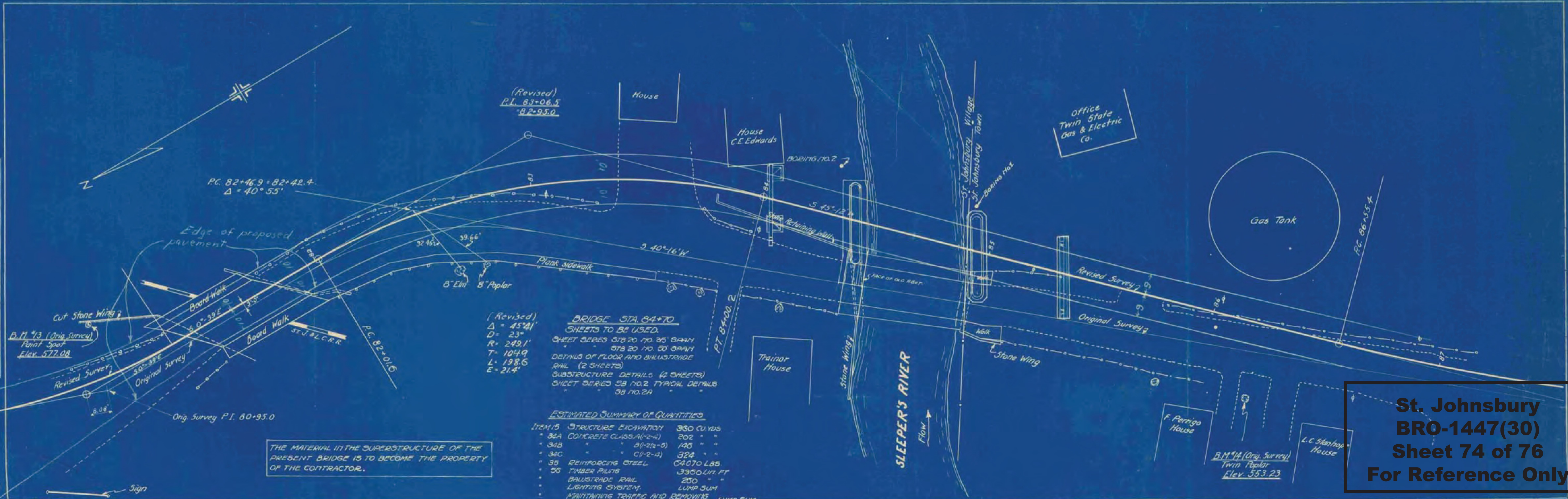


PLAN
 DATE: 1/23/20
 DRAWN BY: [Name]
 CHECKED BY: [Name]
 PROJECT: [Name]

DATE: 1/23/20
 DRAWN BY: [Name]
 CHECKED BY: [Name]
 PROJECT: [Name]



(Revised)
 P.I. 83+06.5
 Δ = 40° 55'

(Revised)
 Δ = 45° 41'
 D = 23°
 R = 249.1'
 T = 104.9'
 L = 198.6'
 E = 21.4'

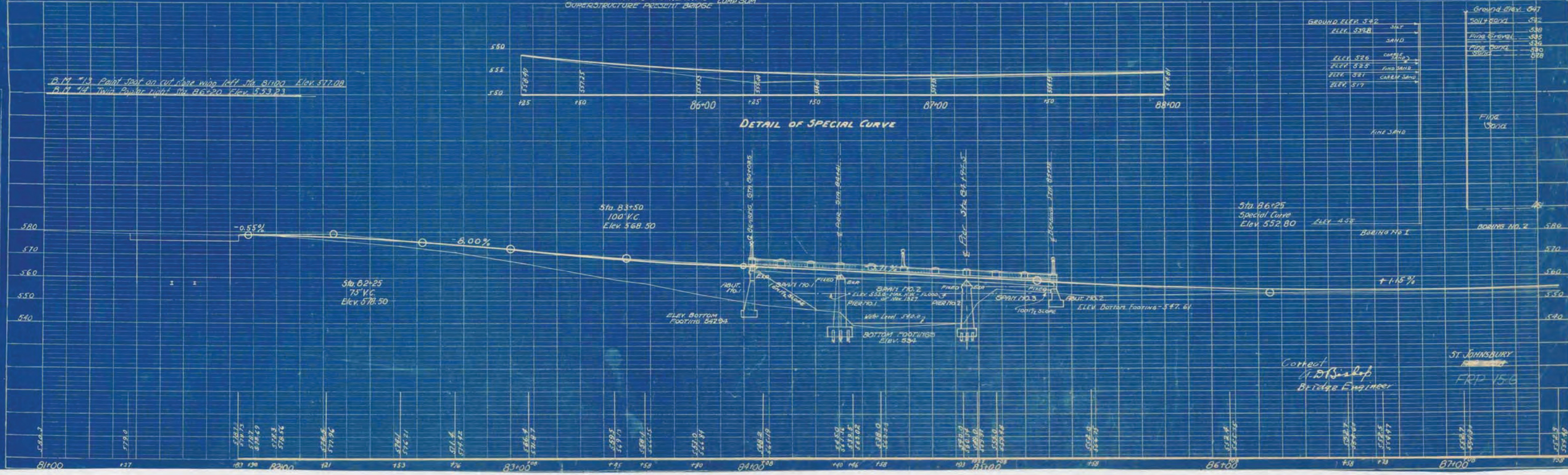
BRIDGE STA. 84+70
 SHEETS TO BE USED:
 SHEET SERIES 87820 NO. 35 BRN
 SHEET SERIES 87820 NO. 35 BRN
 DETAILS OF FLOOR AND BILLBOARD
 RAIL (2 SHEETS)
 SUBSTRUCTURE DETAILS (2 SHEETS)
 SHEET SERIES 88 NO. 2A TYPICAL DETAILS
 38 NO. 2A

ESTIMATED SUMMARY OF QUANTITIES

ITEM 15	STRUCTURE EXCAVATION	360 CU YDS
32A	CONCRETE CLASS A (2-4)	202 "
34B	" (2-2)	140 "
34C	" (1-2-4)	324 "
35	REINFORCING STEEL	64070 LBS
56	TIMBER PILING	3300 L.F. FT
	BAULSTRADE RAIL	200 "
	LIGHTING SYSTEM	LUMP SUM
	MAINTAINING TRAFFIC AND REMOVING SUPERSTRUCTURE PRESENT BRIDGE	LUMP SUM

THE MATERIAL IN THE SUPERSTRUCTURE OF THE PRESENT BRIDGE IS TO BECOME THE PROPERTY OF THE CONTRACTOR.

**St. Johnsbury
 BRO-1447(30)
 Sheet 74 of 76
 For Reference Only**



Contract
 J. B. Sisk
 Bridge Engineer

ST. JOHNSBURY
 FRP 15-6