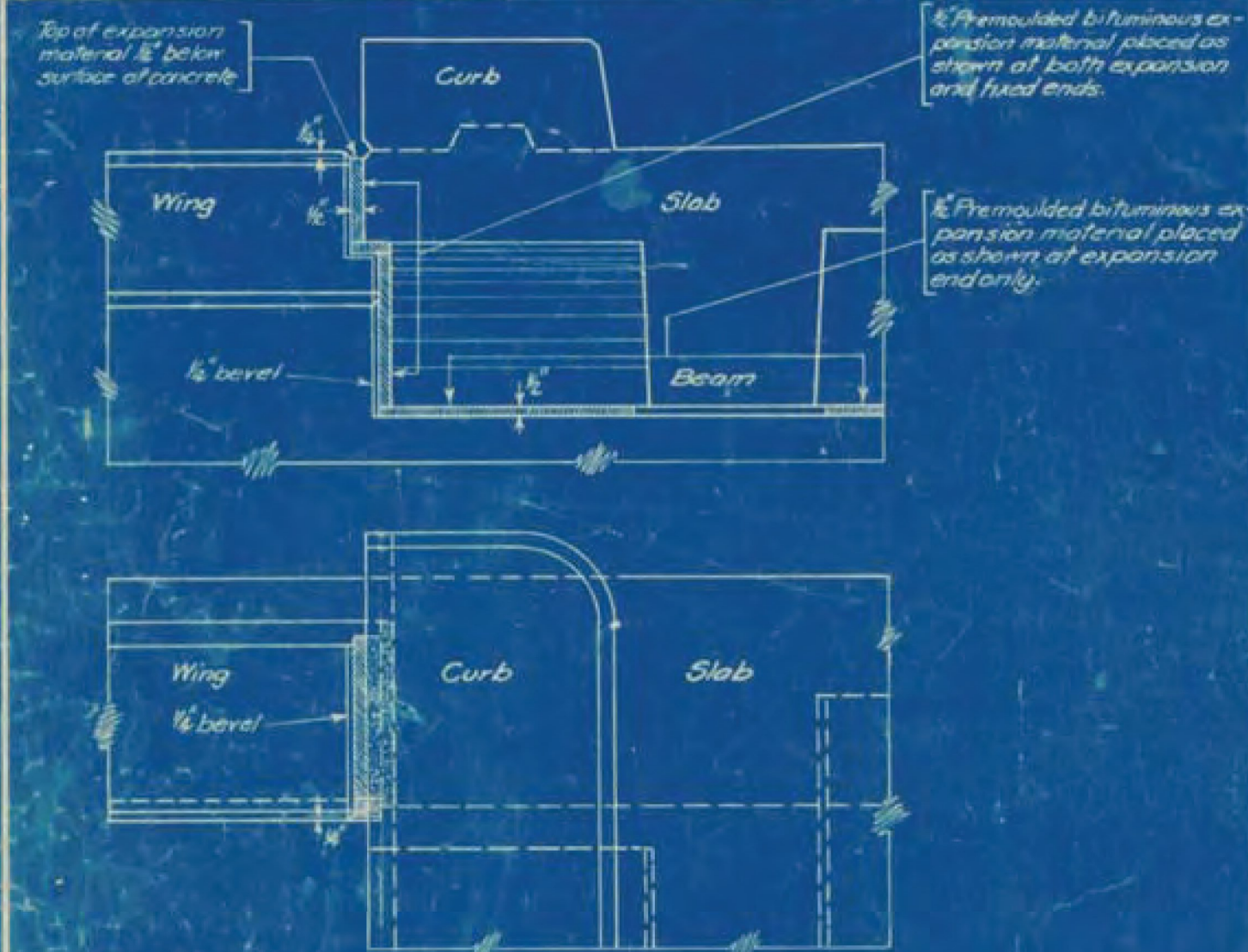
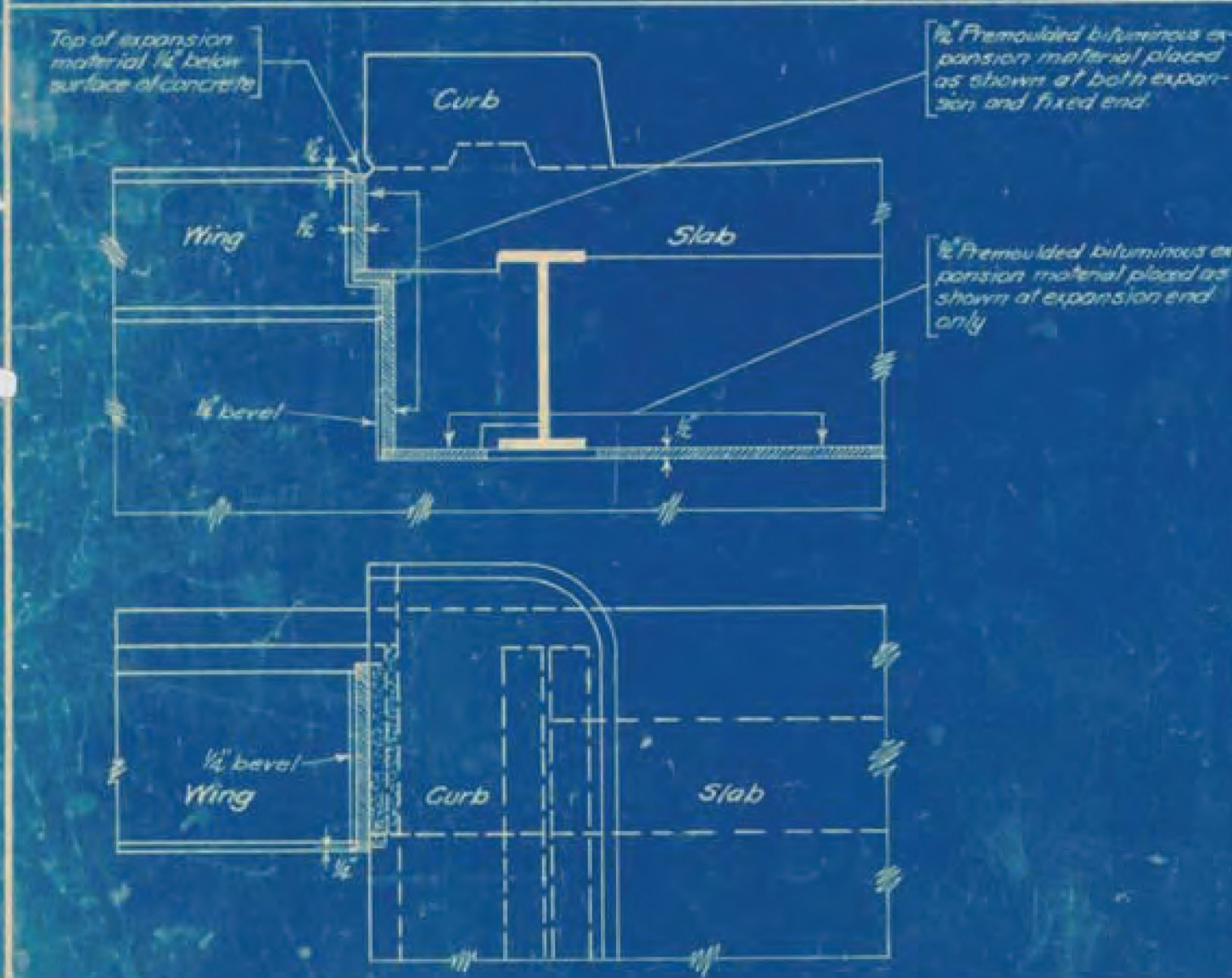


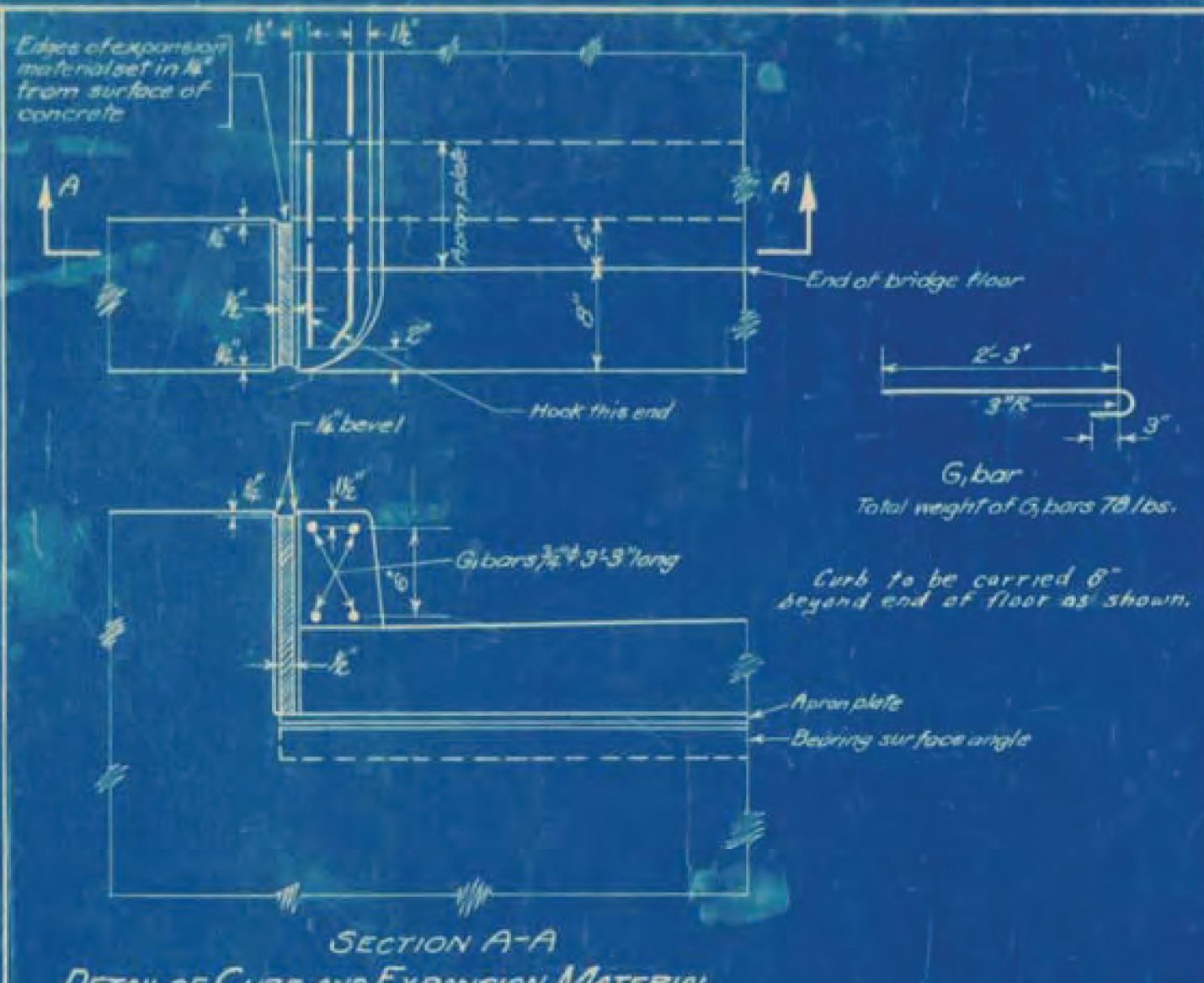
DETAIL OF EXPANSION MATERIAL FOR SLAB BRIDGES STANDARD DETAIL-5222



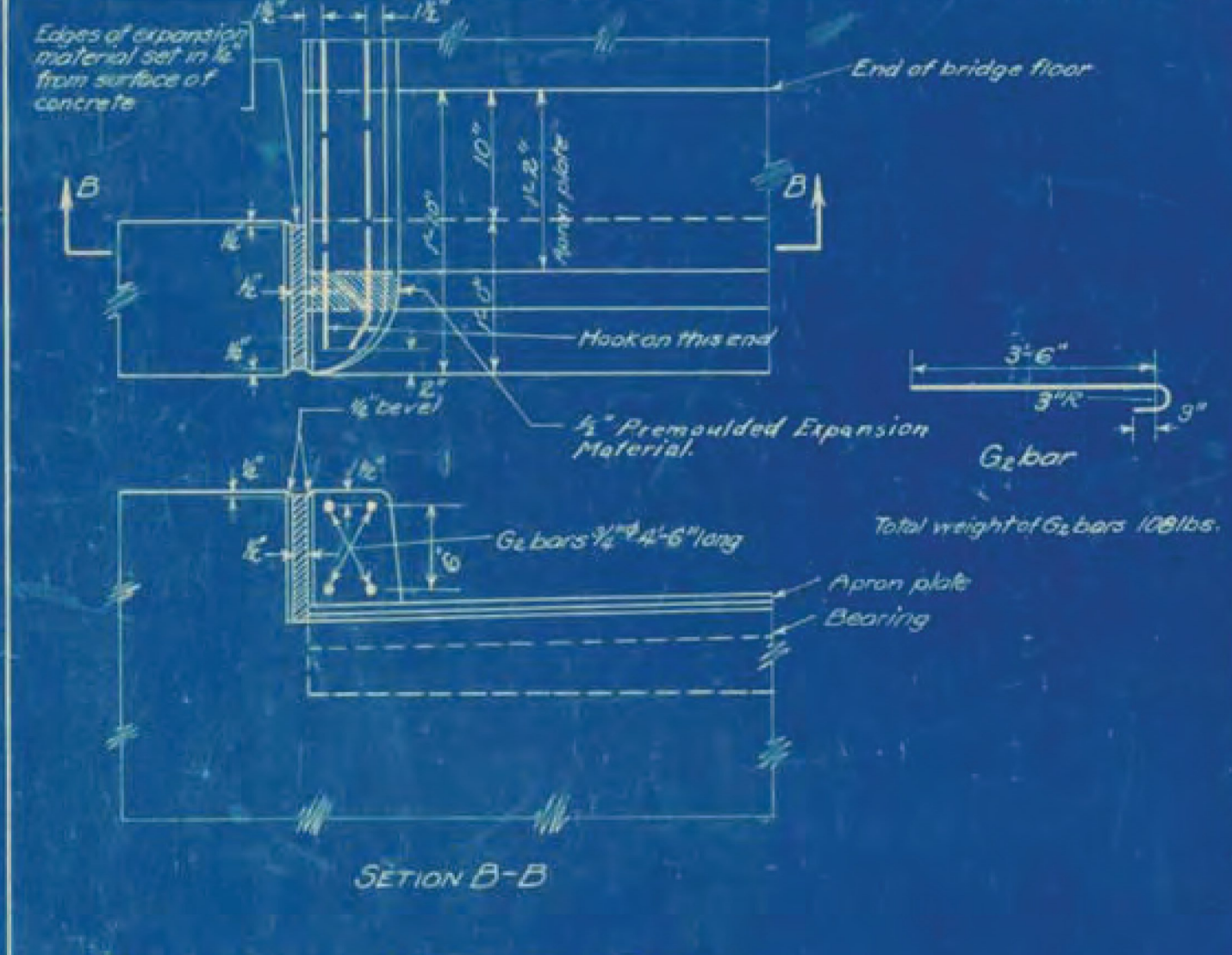
DETAIL OF EXPANSION MATERIAL FOR TEE BEAM BRIDGES STANDARD DETAIL-5223



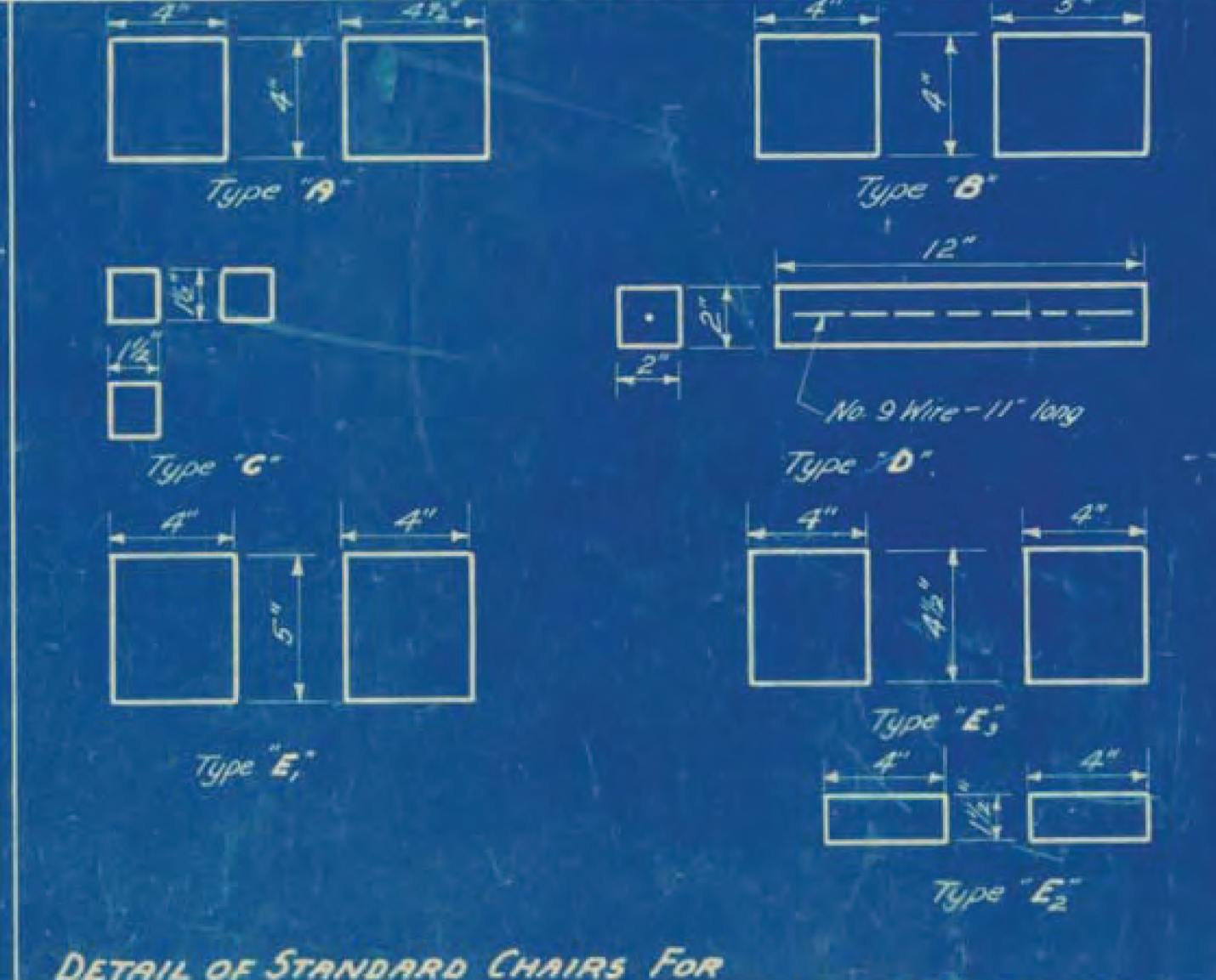
DETAIL OF EXPANSION MATERIAL FOR I BEAM BRIDGES STANDARD DETAIL-5224



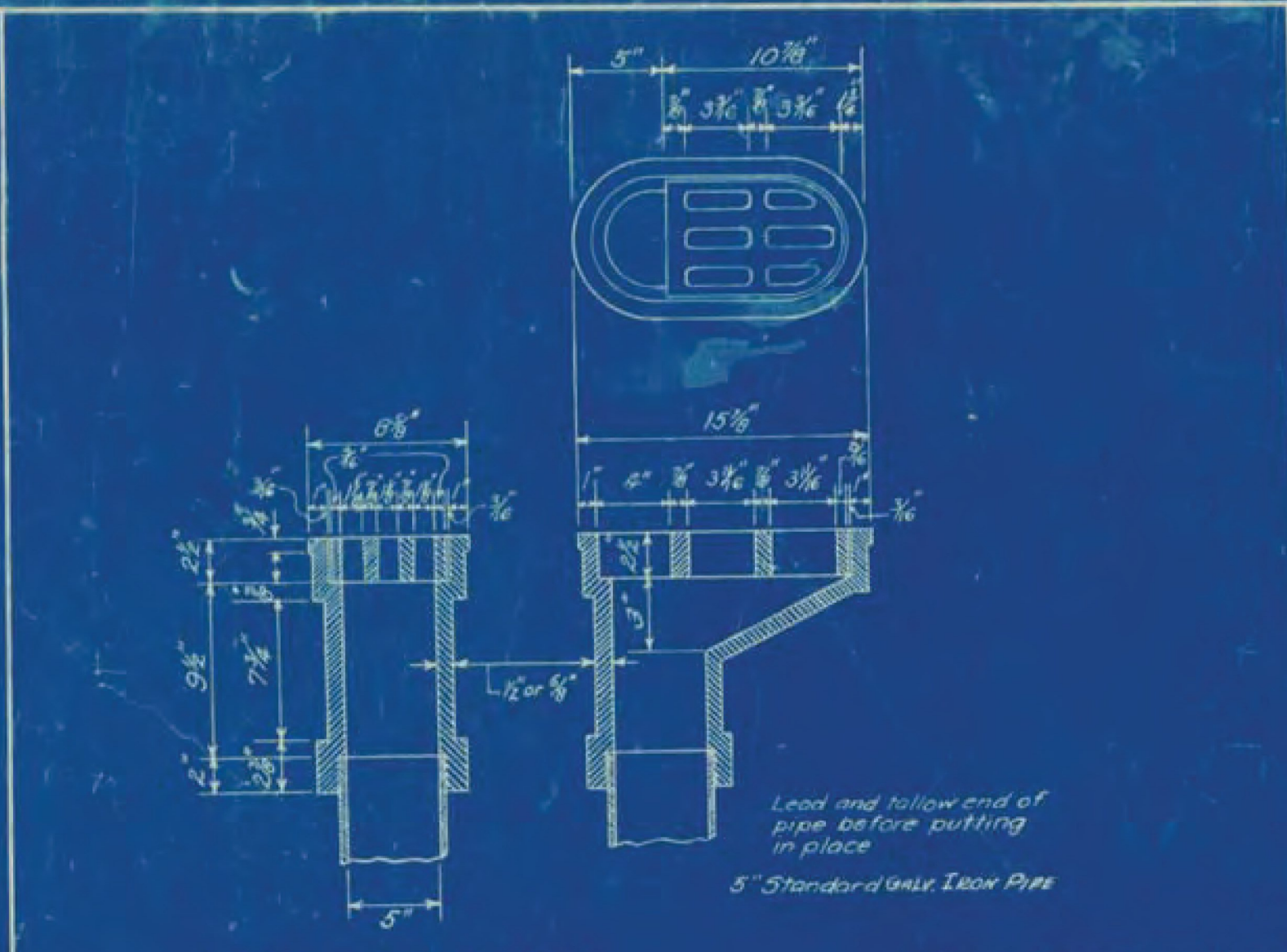
DETAIL OF CURB AND EXPANSION MATERIAL FOR STEEL BRIDGES UP TO 150' SPAN STANDARD DETAIL-5225



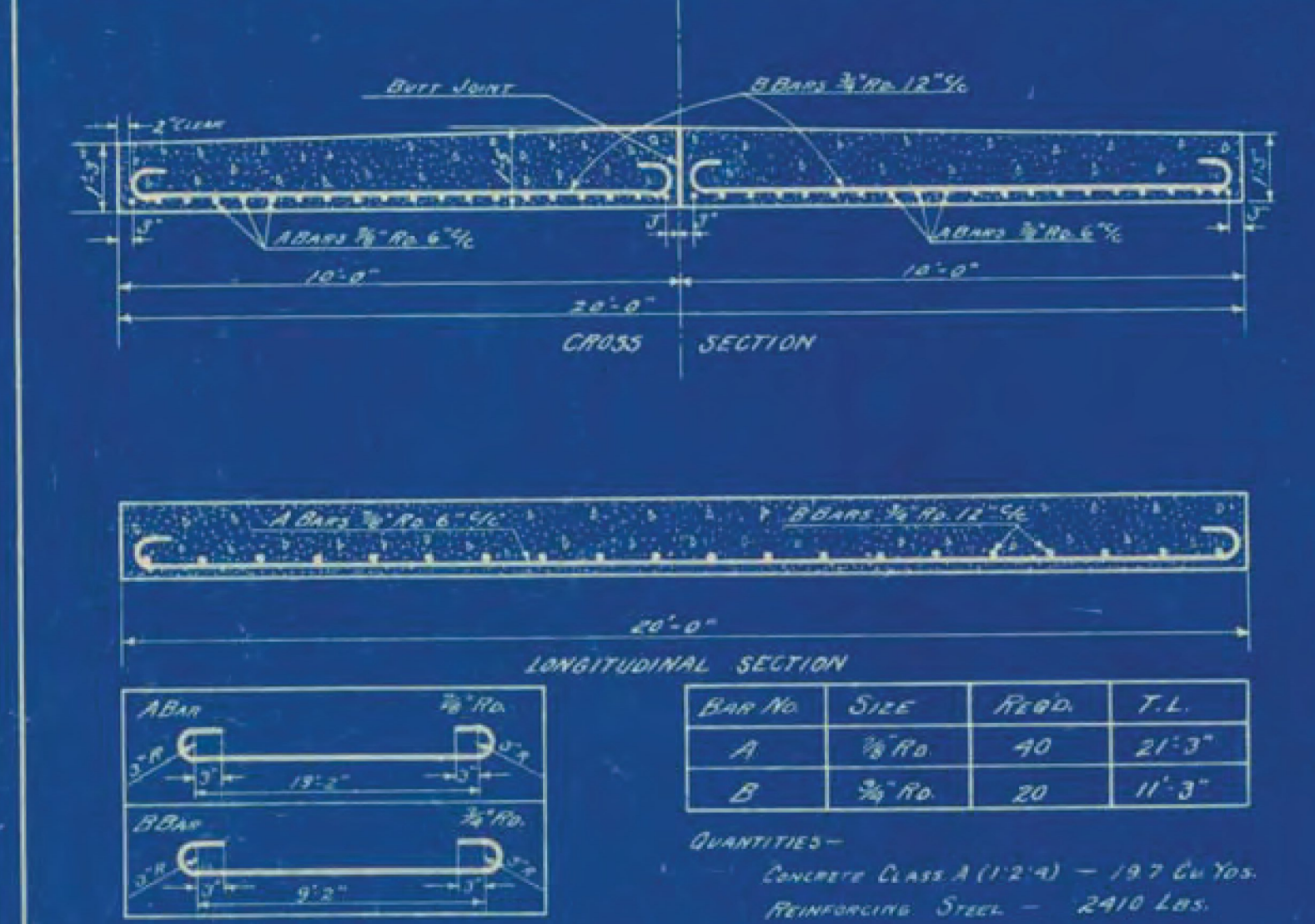
DETAIL OF CURB AND EXPANSION MATERIAL FOR STEEL BRIDGES OVER 150' SPAN STANDARD DETAIL-5226



DETAIL OF STANDARD CHAIRS FOR TEE BEAM, I BEAM AND STEEL BRIDGES STANDARD DETAIL-5227



DETAIL OF DRAIN PIPE STANDARD DETAIL-5228



DETAIL OF APPROACH SLAB STANDARD DETAIL-5229

**St. Johnsbury
BRO-1447(30)
Sheet 71 of 76
For Reference Only**

**TYPICAL DETAILS
STATE OF VERMONT
DEPARTMENT OF HIGHWAYS**

CORRECT: *A. E. Bulfinch*
BRIDGE ENGINEER
Corrected to March 1, 1929
Surveyed by
Designed by
Drawn by *Chas. E. Bulfinch*
Traced by *Chas. E. Bulfinch*
Checked by *W. H. B.*
Series SB No. 2A