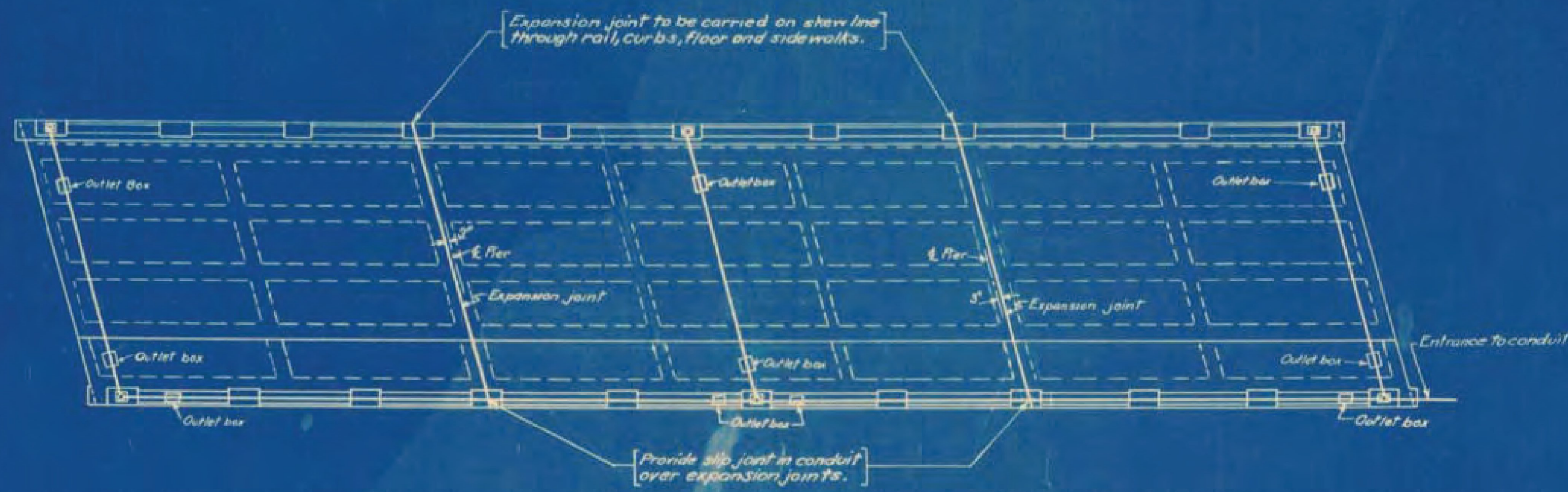
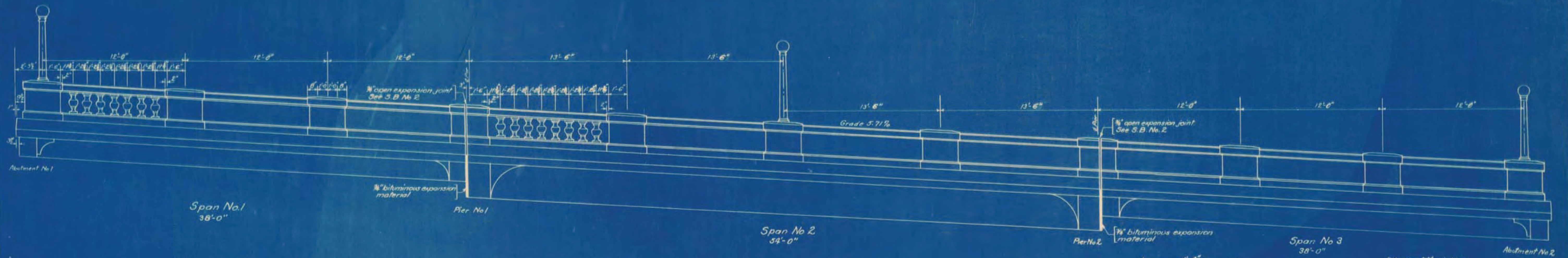
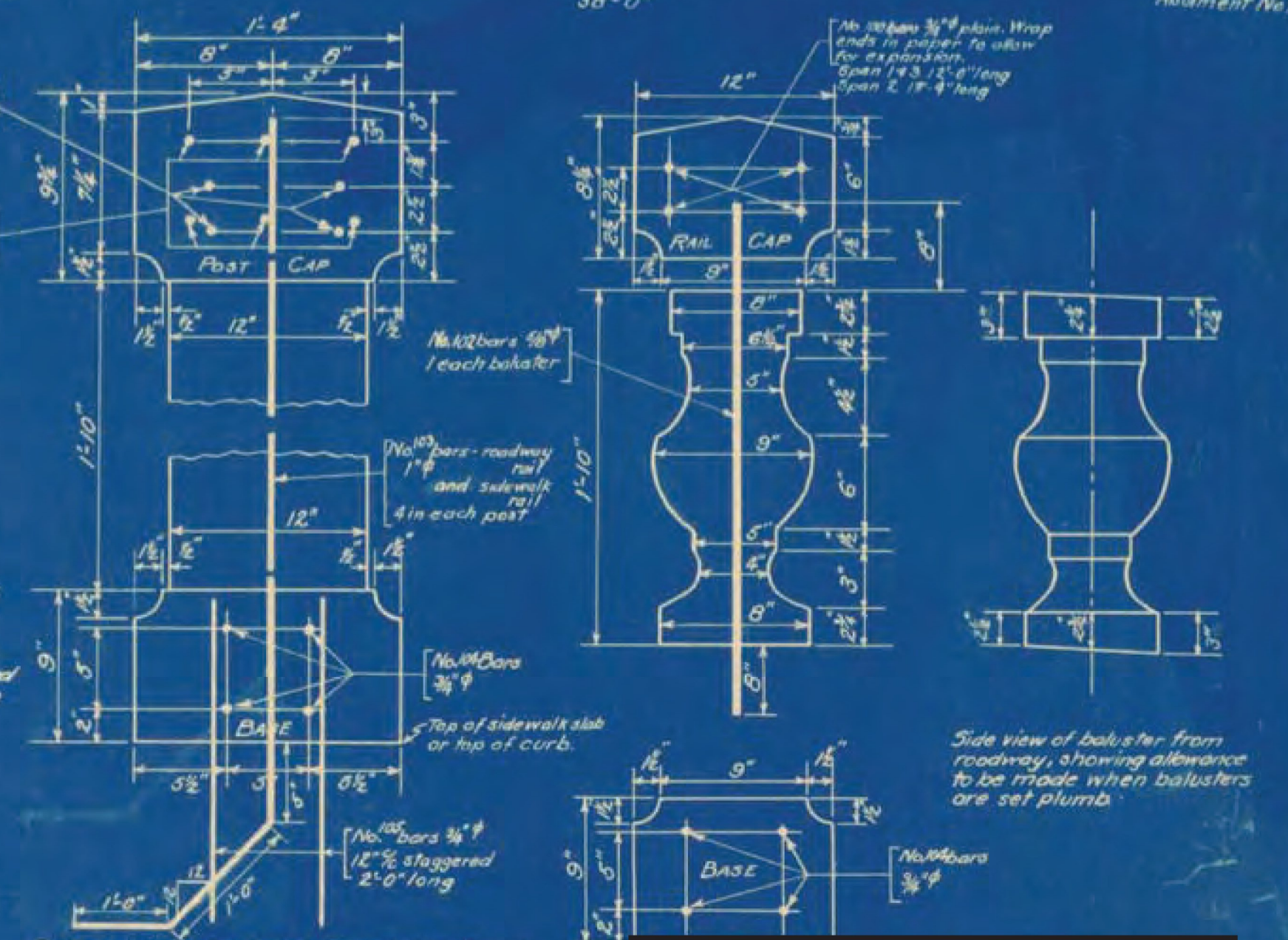


Beams and floor of spans 1 & 3 to have a permanent camber not less than $\frac{1}{8}$ " and not more than $\frac{1}{4}$ ".
 Beams and floor of span 2 to have a permanent camber not less than $\frac{1}{8}$ " and not over $\frac{1}{4}$ ".
 Top of curb, sidewalk and railing shall be built to true grade.



One light required (100 Watts - 100 Watts).
 Globe 16" x 16"
 Size of base of post 11" square.
 Diameter of fluted shaft - 3 1/2" top - 3" at bottom.
 Base, shaft and capital to be separate.
 Base and capital to be best grade of tough grey foundry cast iron.
 Shafts to be 2 ply of No. 22 U.S. gauge bearing steel, locked seamed, the fluted and pressed firmly together, no solder or rivets used.
 Complete standards required.
 Company furnishing light standards shall provide anchor bolt plans.
 Anchor bolts for light standards shall be placed in post forms before concrete is poured.
 Lump sum bid for lamp posts shall cover the complete cost of labor and materials and for the installation of the following lighting system:
 Complete standards, conduits, wiring and all incidentals necessary for the complete lighting of the bridge, but not to include wiring from the inlet of the bridge to the pole. All work and materials entered into the lighting system installation for the bridge shall be standard work and materials required for this class of work and shall be performed in such a manner as to conform to the code of the National Board of Fire Underwriters.
 Lamp standards to receive field coat of approved red lead and oil, one field coat of standard white enamel rail paint, tinted to give any color satisfactory to the Engineer.
 Standard conduit type for electric wiring.
 Conduit to be correctly placed in position before concrete is poured.
 Size of all conduit pipe to be 1 1/2" unless otherwise approved by the Engineer.



Posts and baluster to be placed plumb and not perpendicular to grade.
 Balusters to be 1/2" max.
 Posts and rail to be class A-A (1-18-3)
 Price bid for baluster rail per lin. ft. to include base, balusters, posts and rail caps.

**St. Johnsbury
 BRO-1447(30)
 Sheet 65 of 76
 For Reference Only**

**SUPERSTRUCTURE DETAILS
 GAS PLANT BRIDGE
 ST. JOHNSBURY**

Surveyed by
 Designed by
 Drawn by *C. Wood*
 Traced by *C. Wood*
 Checked by *Bishop*
 Series No. Filed
 Sheet 65 of 97 Sheets