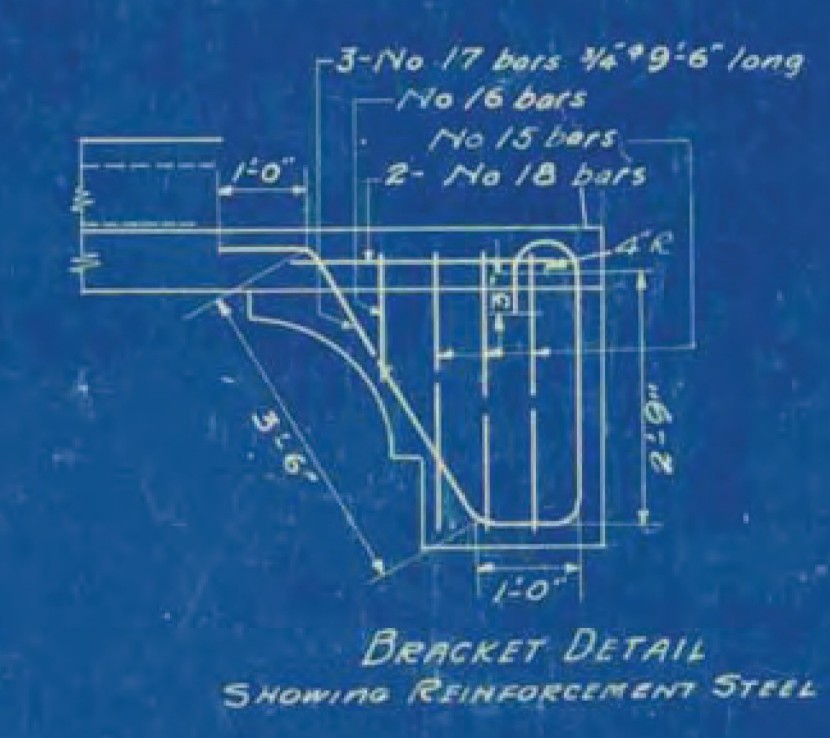
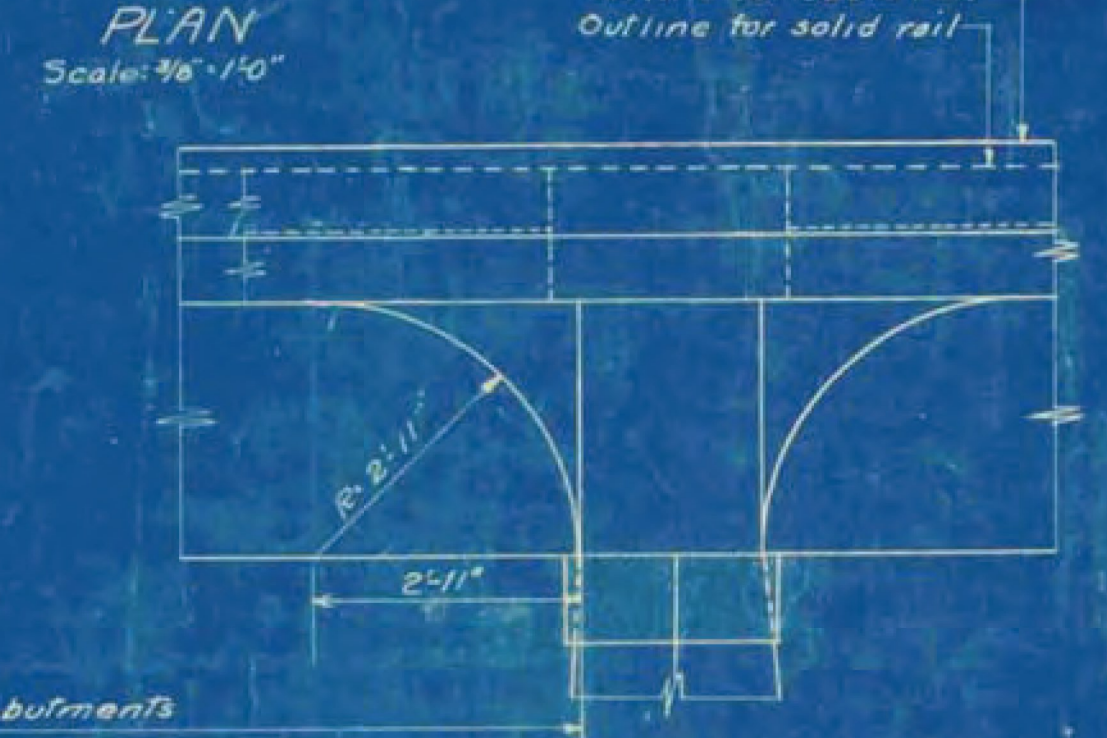
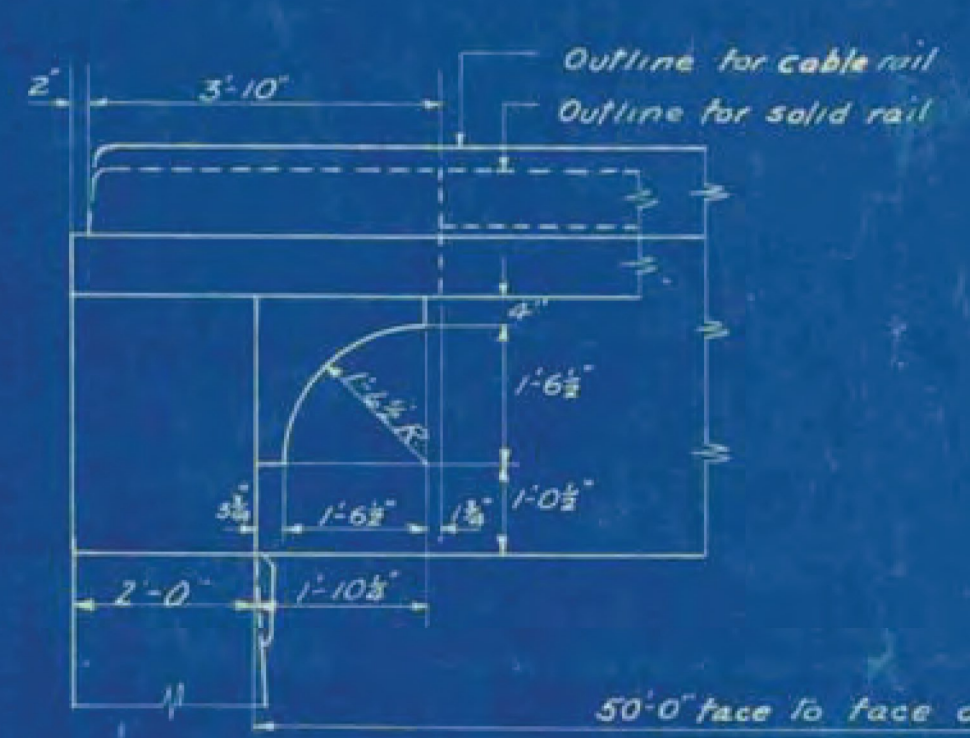
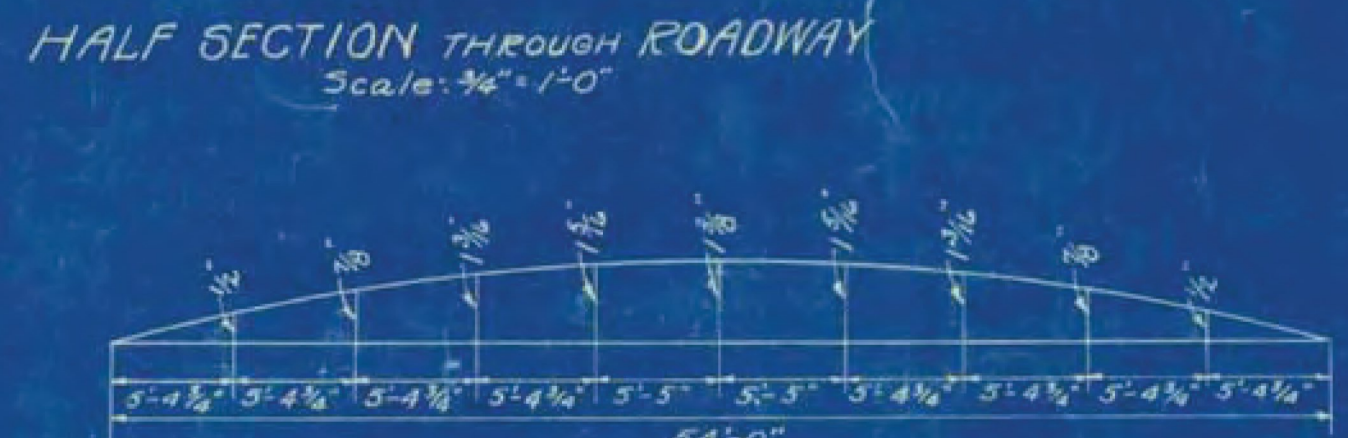
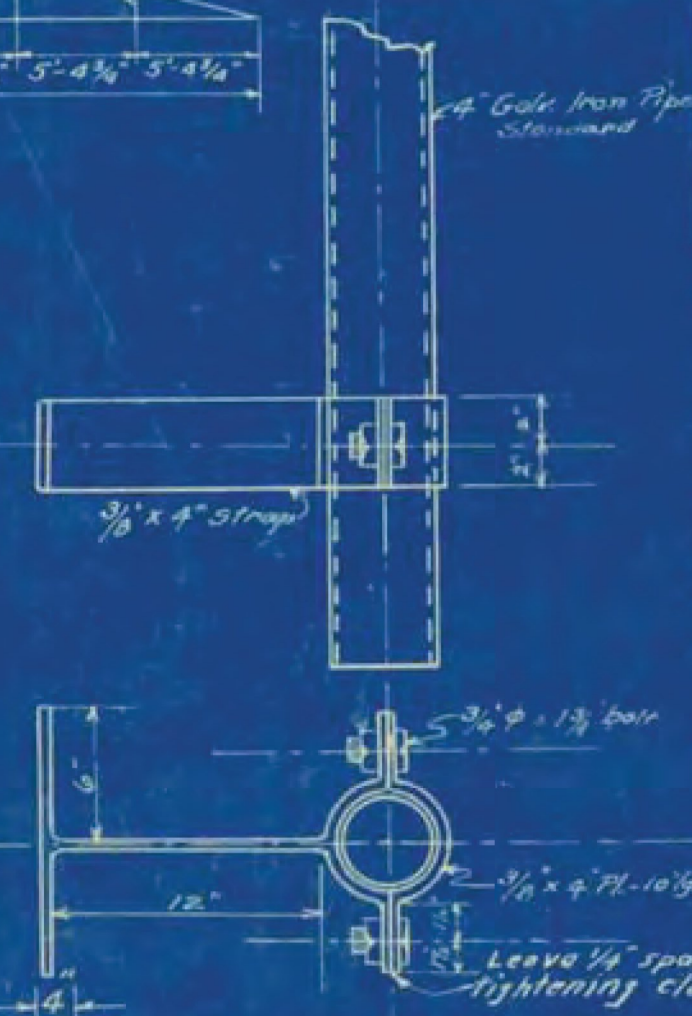


STEEL SCHEDULE			
Bar	Size	Length	Detail
1	1 1/2"	36'-0"	
2	1 1/2"	58'-3"	
3	1 1/2"	51'-6"	
4	1 1/2"	47'-3"	
6	1/2"	8'-10"	
7	5/8"	24'-0"	
8	5/8"	23'-0"	
9	5/8"	22'-6"	
10	3/8"	27'-6"	
11	3/8"	27'-6"	
12	3/8"	22'-6"	
13	1/2"	5'-3"	
14	3/8"	79'-0"	
15	3/8"	3'-6"	
16	3/8"	4'-6"	
17	See detail below		



Clamp and pipe to receive two coats of approved red lead and oil and two coats of approved white guard rail paint.

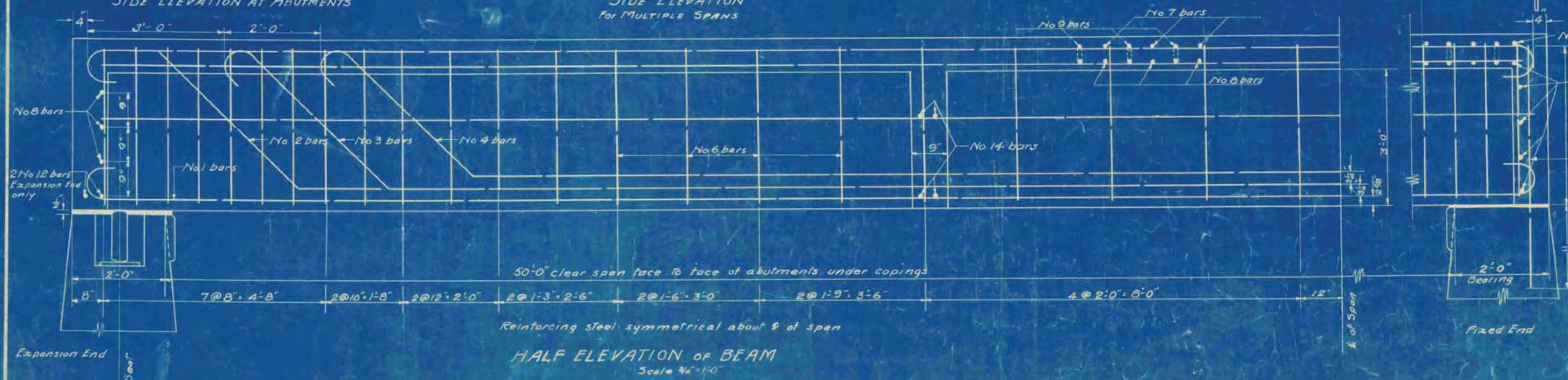


Notes:  
The correctness of this steel schedule is not guaranteed and no claim will be allowed for any inaccuracy therein.  
All steel to be deformed bars. Reinforcing steel shall conform to the Standard Specifications for Billet Steel Concrete Reinforcement Bars, Intermediate or Structural Grade, of the American Society for Testing Materials, Serial Designation A15-14.  
All bar detail dimensions refer to E of steel.  
All work and materials shall conform to the Standard Road and Bridge Specifications of the State of Vermont, 1926.  
For typical details see sheet SB-2. Use details.

**St. Johnsbury BRO-1447(30) Sheet 63 of 76 For Reference Only**

**TEE BEAM BRIDGE  
50'-0" CLEAR SPAN  
20' ROADWAY  
2-15 TON TRUCKS  
OR 100# PER SQ. FT.**

CORRECT *A. D. Bishop*  
BRIDGE ENGINEER



ESTIMATED QUANTITIES	
Concrete Class A (1-2-4)	70 Cu. Yds.
Reinforcing Steel (including expansion device)	20230 Lbs.

Surveyed by	
Designed by	
Drawn by <i>D.W.P.</i>	9/1/20
Traced by <i>D.W.P.</i>	9/1/20
Checked by	
Series <i>STB2</i> No. <i>50</i>	Filed
Sheet	of
	Sheets