

BRIDGE RAILING, GALVANIZED STEEL TUBING/CONCRETE COMBINATION
 STA. 16+21 TO 17+34, LT
 STA. 16+30 TO 17+42, RT

VERTICAL GRANITE CURB
 STA. 15+30 TO 16+27, LT
 STA. 17+18 TO 18+25, LT

PORTLAND CEMENT CONCRETE SIDEWALK, 5 INCH
 STA. 15+26 TO 16+27, LT
 STA. 17+16 TO 18+25, LT

STEEL BEAM GUARDRAIL, GALVANIZED
 STA. 15+65.5 TO 16+03.0, LT
 STA. 15+80.3 TO 16+12.0, RT
 STA. 17+52.0 TO 17+89.5, LT
 STA. 17+60.0 TO 18+75.0, RT (CONNECT TO EXISTING)

ANCHOR FOR STEEL BEAM RAIL
 STA. 15+65.5, LT
 STA. 15+80.3, RT
 STA. 17+89.5, LT

REMOVAL AND DISPOSAL OF GUARDRAIL
 STA. 15+71 TO 16+01, LT
 STA. 17+32 TO 17+62, LT
 STA. 17+40 TO 18+25, RT

SIDEWALK - SPECIAL PROVISION (HIGH PERFORMANCE CONCRETE, LIGHTWEIGHT)
 STA. 16+27 TO 17+16, LT

CONSTRUCT DRIVE
 STA. 14+98, RT (34' PAVED)
 STA. 15+08, LT (34.5' PAVED)
 STA. 15+66, RT (39.5' PAVED)

GUARDRAIL APPROACH SECTION, CONC COMB BRIDGE RAILING TL-3
 STA. 16+03 TO 16+21, LT
 STA. 15+94 TO 16+12, RT
 STA. 17+34 TO 17+52, LT
 STA. 17+42 TO 17+60, RT

PLAN REFERENCES
 - U041-4(2) (1972) - ROUTE 5 HIGHWAY PROJECT
 - FR 15G (1929) - FORMER RT 5 (MAIN ST.) REALIGNMENT HIGHWAY PROJECT
 - PLAN FOR ST JOHNSBURY (1989) - PUMP STATION - BY DUSSAULT SURVEYING, MAY 1989
 - ROW & TRACK MAP FOR THE ST JOHNSBURY & LAKE CHAMPLAIN R.R. CO. VAL SHEET V/50/1
 - ROW & TRACK MAP FOR THE BOSTON & MAINE R.R. VAL SHEET V43/61

CURVE 2 DATA
 $\Delta = 45^{\circ}57'00''$
 $D = 24^{\circ}22'52''$
 $R = 235.00'$
 $T = 99.63'$
 $L = 188.47'$
 $E = 20.25'$

CURVE 1 DATA
 PC = STA 11+51.42
 $\Delta = 20^{\circ}55'01''$
 $R = 955.00'$
 $T = 176.28'$
 $L = 348.64'$
 $E = 16.13'$

REPORT OF DOING & ORDER ALTERING TOWN HWY #371, DATED 6/24/2013

MENARD, RICHARD D. & CARMEN A.; DONOVAN, SEAN M.

N/F SPICER

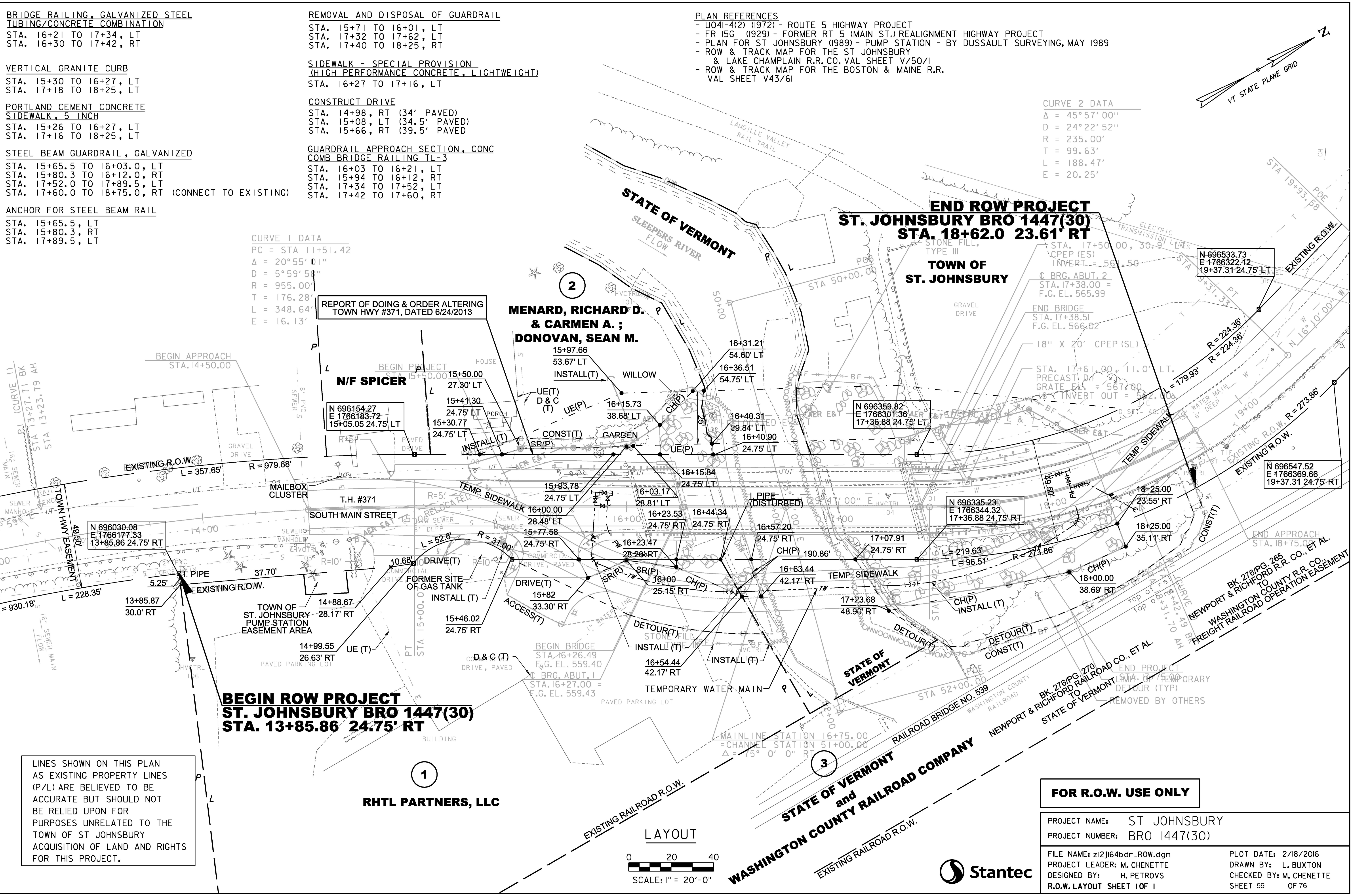
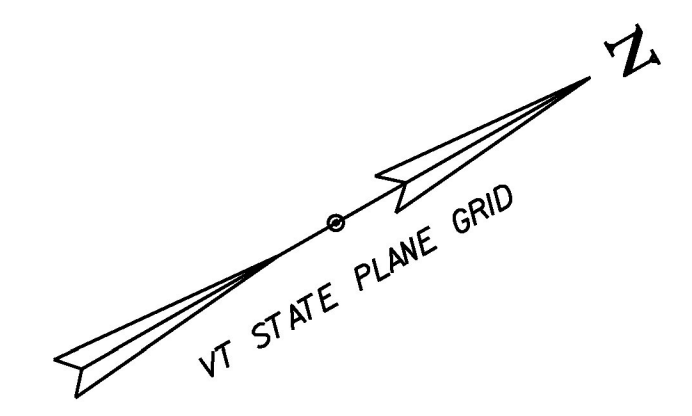
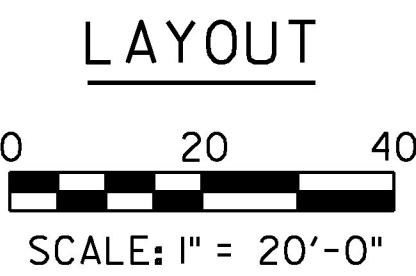
END ROW PROJECT ST. JOHNSBURY BRO 1447(30) STA. 18+62.0 23.61' RT

TOWN OF ST. JOHNSBURY

BEGIN ROW PROJECT ST. JOHNSBURY BRO 1447(30) STA. 13+85.86 24.75' RT

RHTL PARTNERS, LLC

LINES SHOWN ON THIS PLAN AS EXISTING PROPERTY LINES (P/L) ARE BELIEVED TO BE ACCURATE BUT SHOULD NOT BE RELIED UPON FOR PURPOSES UNRELATED TO THE TOWN OF ST JOHNSBURY ACQUISITION OF LAND AND RIGHTS FOR THIS PROJECT.



FOR R.O.W. USE ONLY

PROJECT NAME:	ST JOHNSBURY	PLOT DATE:	2/18/2016
PROJECT NUMBER:	BRO 1447(30)	DRAWN BY:	L. BUXTON
FILE NAME:	z12j164bdr_ROW.dgn	DESIGNED BY:	H. PETROVS
PROJECT LEADER:	M. CHENETTE	CHECKED BY:	M. CHENETTE
R.O.W. LAYOUT SHEET 1 OF 1		SHEET 59	OF 76

