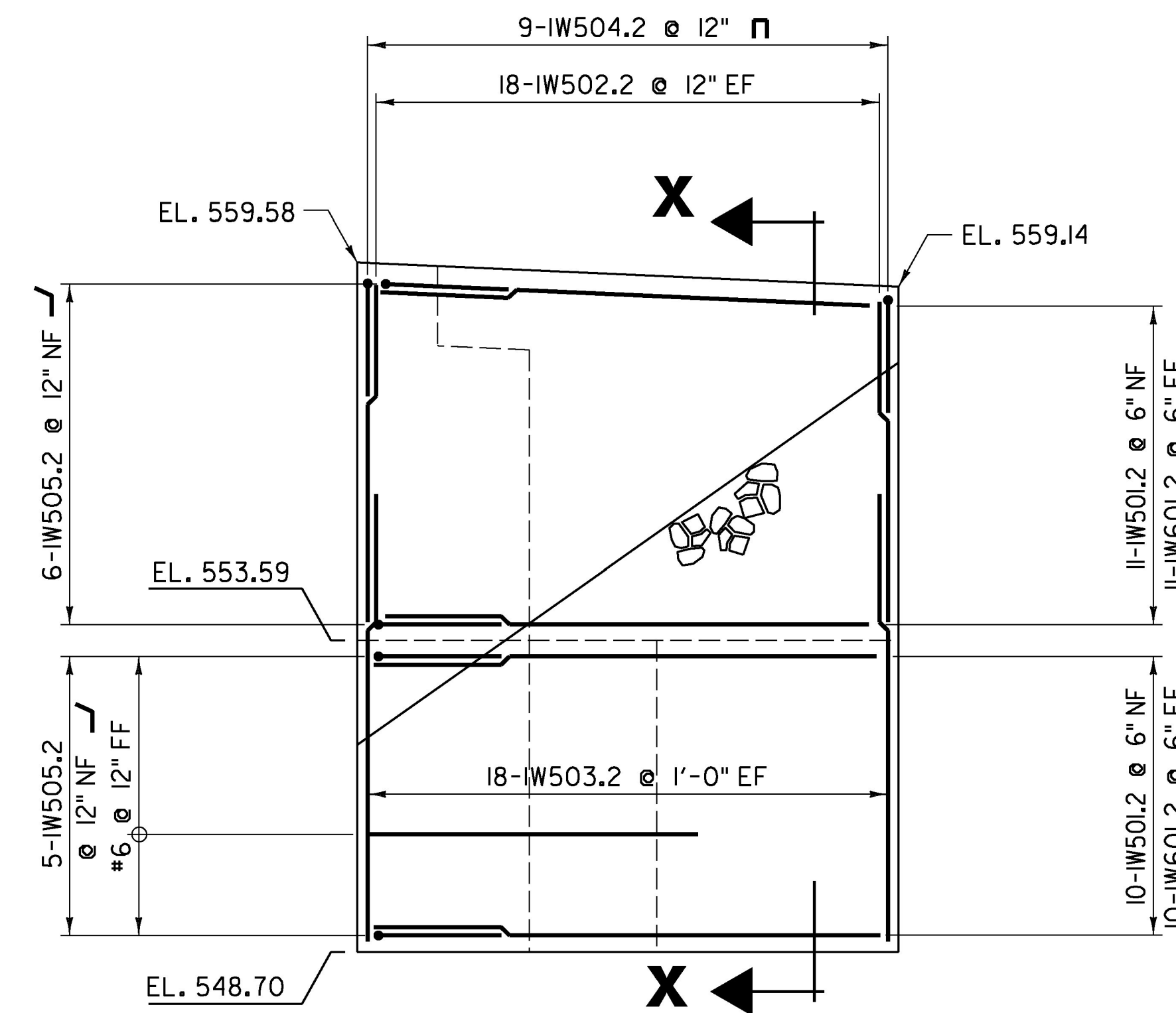
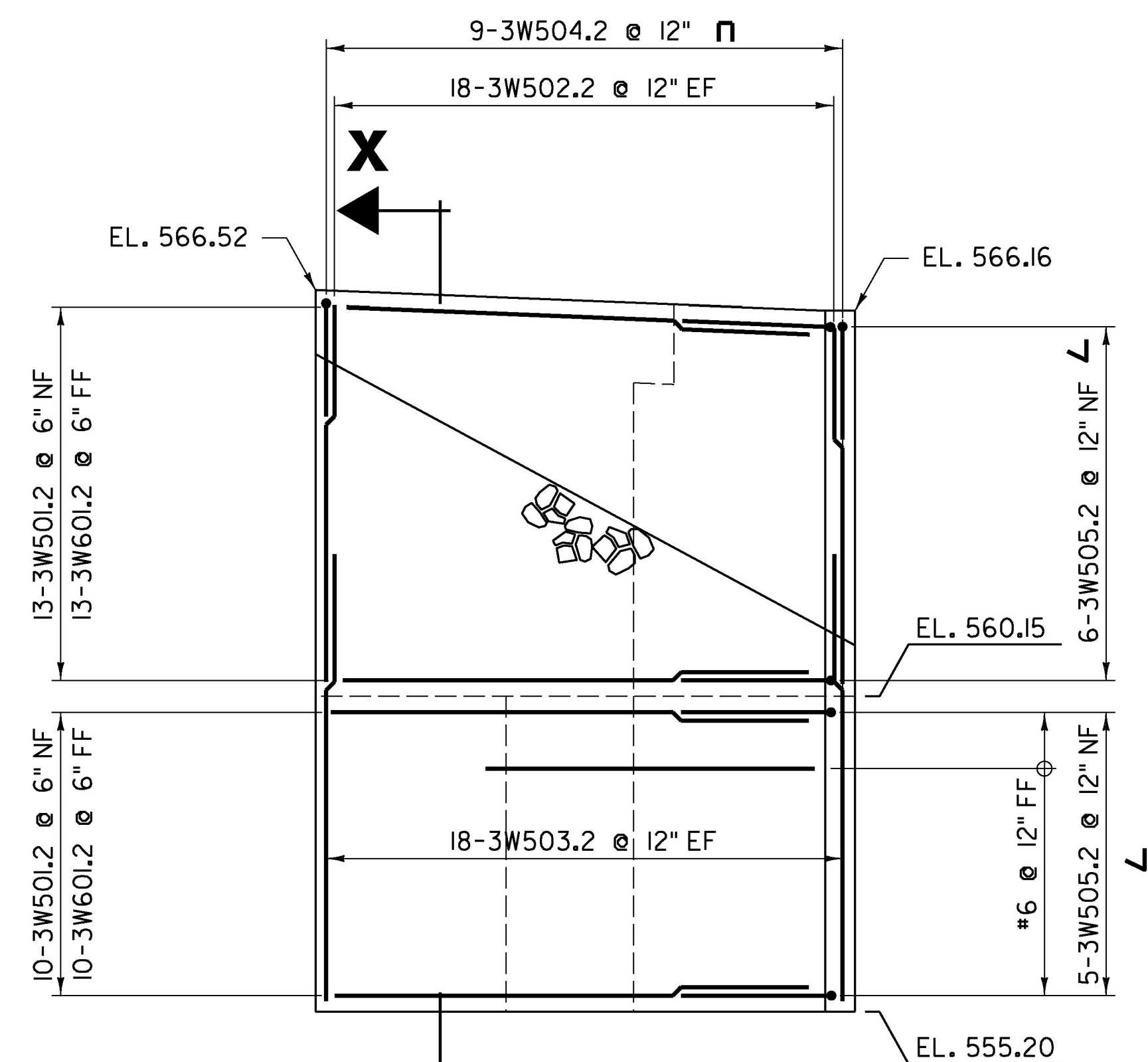


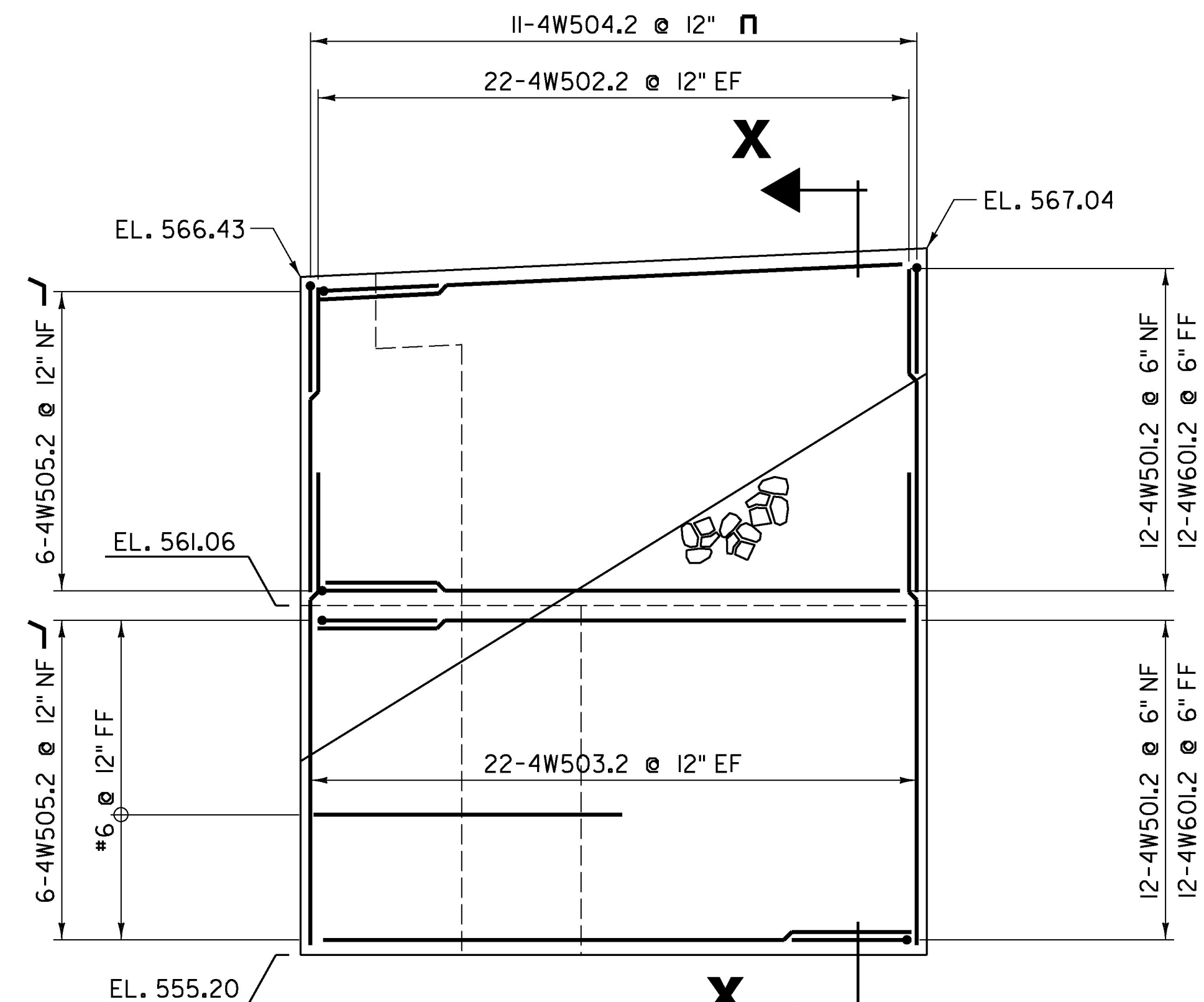
WINGWALL #2
SCALE: 1/2" = 1'-0"



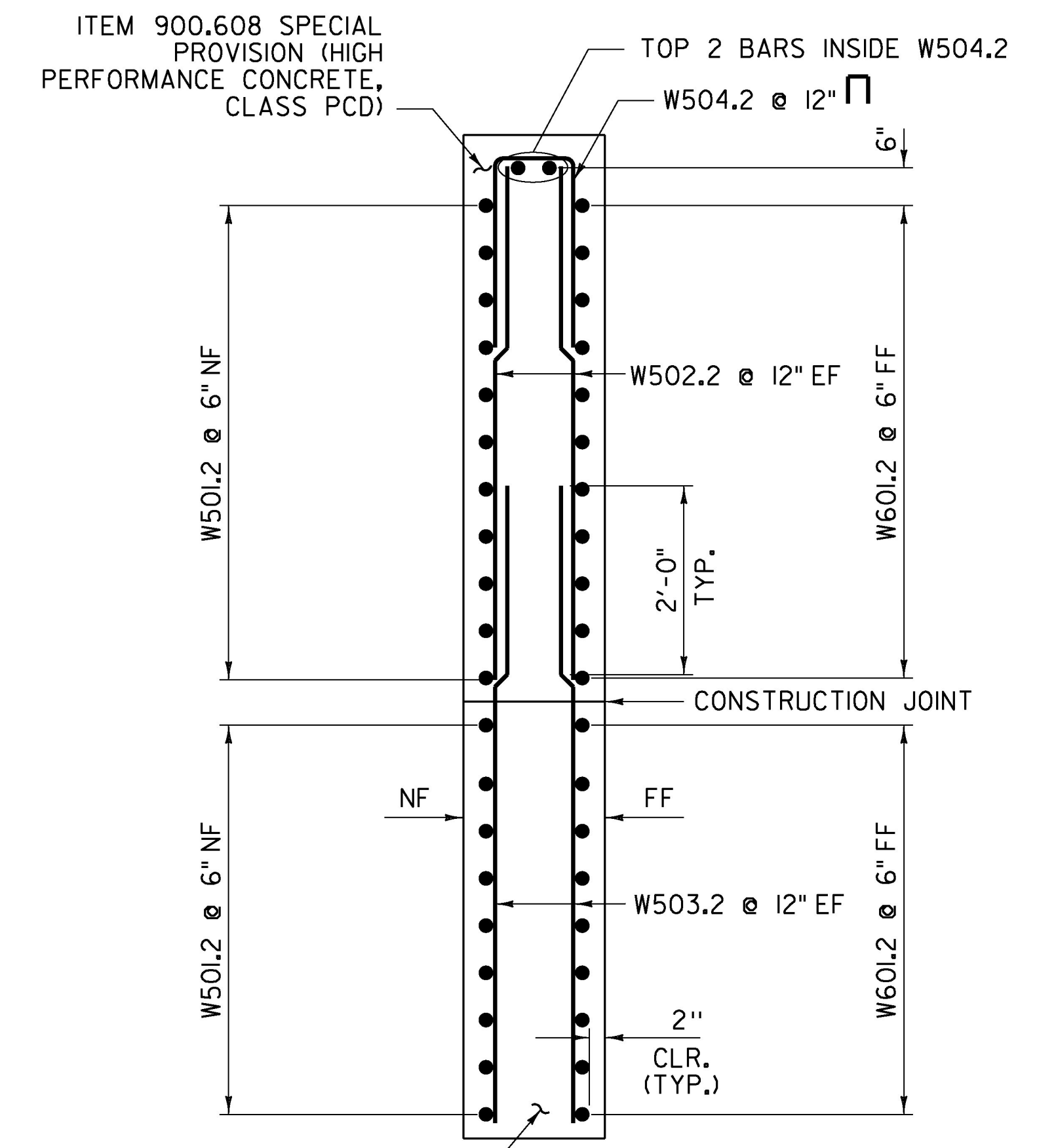
WINGWALL #1
SCALE: 1/2" = 1'-0"



WINGWALL #3
SCALE: 1/2" = 1'-0"



WINGWALL #4
SCALE: 1/2" = 1'-0"



SECTION X-X
SCALE 3/4" = 1'-0"

- NOTES:**
 NF = NEAR FACE
 FF = FAR FACE
 EF = EACH FACE
 ▲ = CUT TO FIT IN FIELD
 ALL LAPS ARE 2'-0" (MIN.) UNLESS OTHERWISE SPECIFIED ON THE PLANS.
 3" CLEAR UNLESS OTHERWISE SPECIFIED ON THE PLANS.

PROJECT NAME:	ST JOHNSBURY
PROJECT NUMBER:	BRO 1447(30)
FILE NAME:	z12j164abuts.dgn
PROJECT LEADER:	M. CHENETTE
DESIGNED BY:	N. TIRK
WINGWALLS	
PLOT DATE:	9/30/2016
DRAWN BY:	L. BUXTON
CHECKED BY:	N. TIRK
SHEET	36 OF 76

