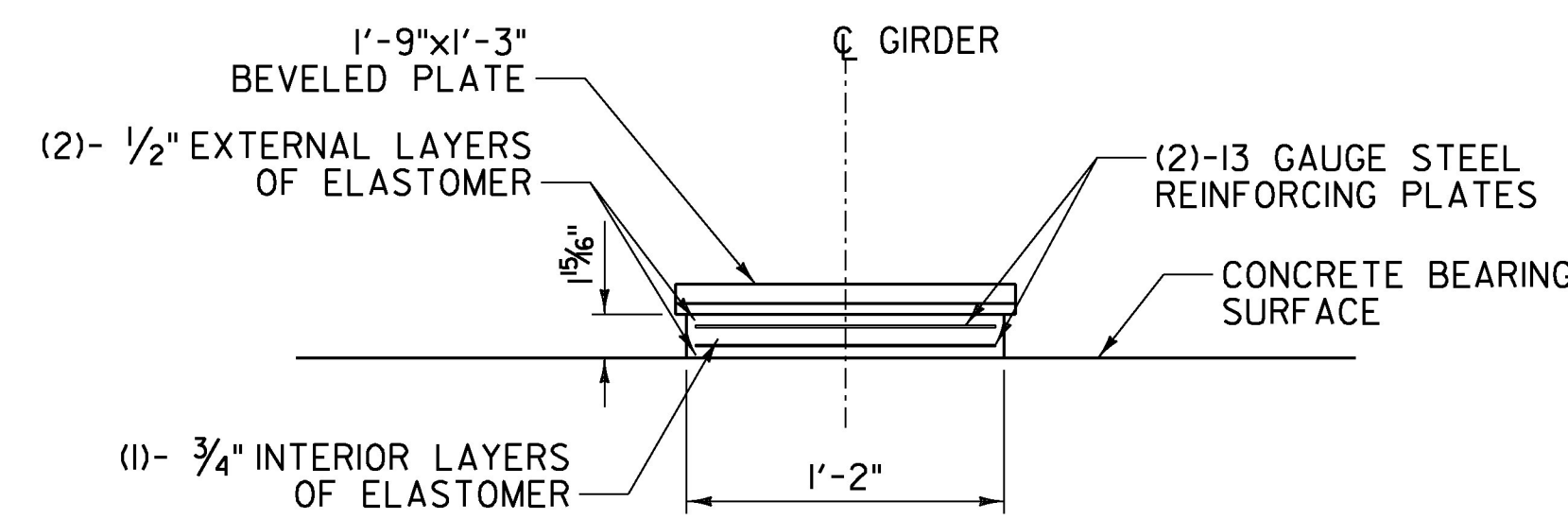
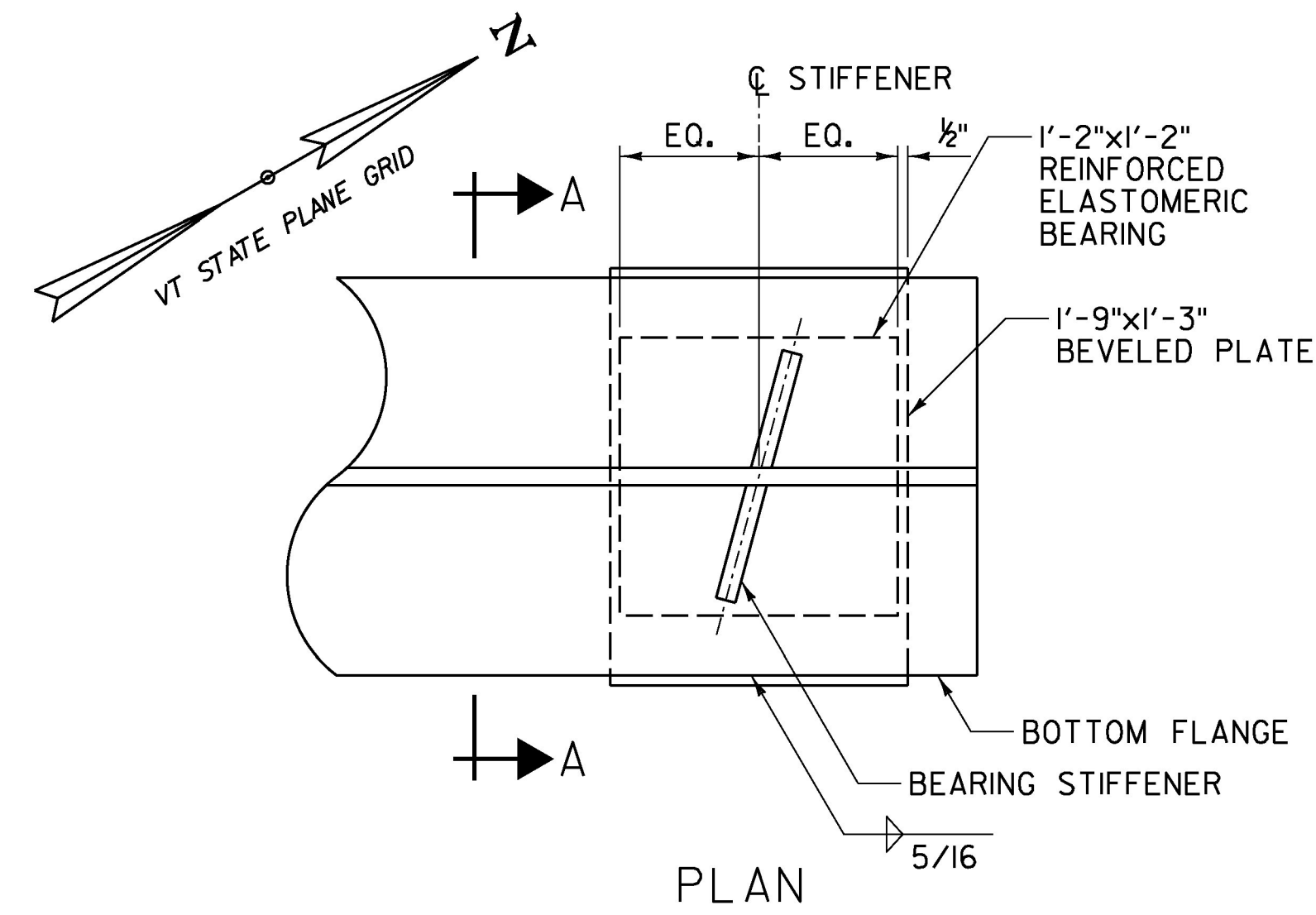
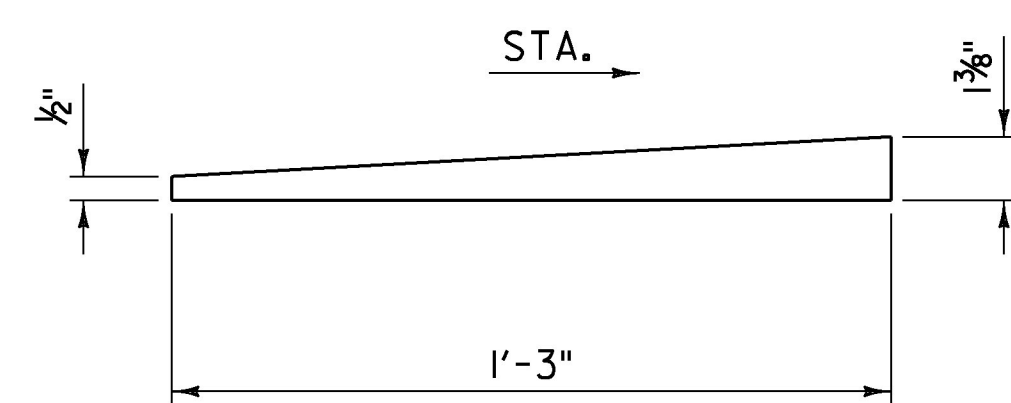


BEARING NOTES:

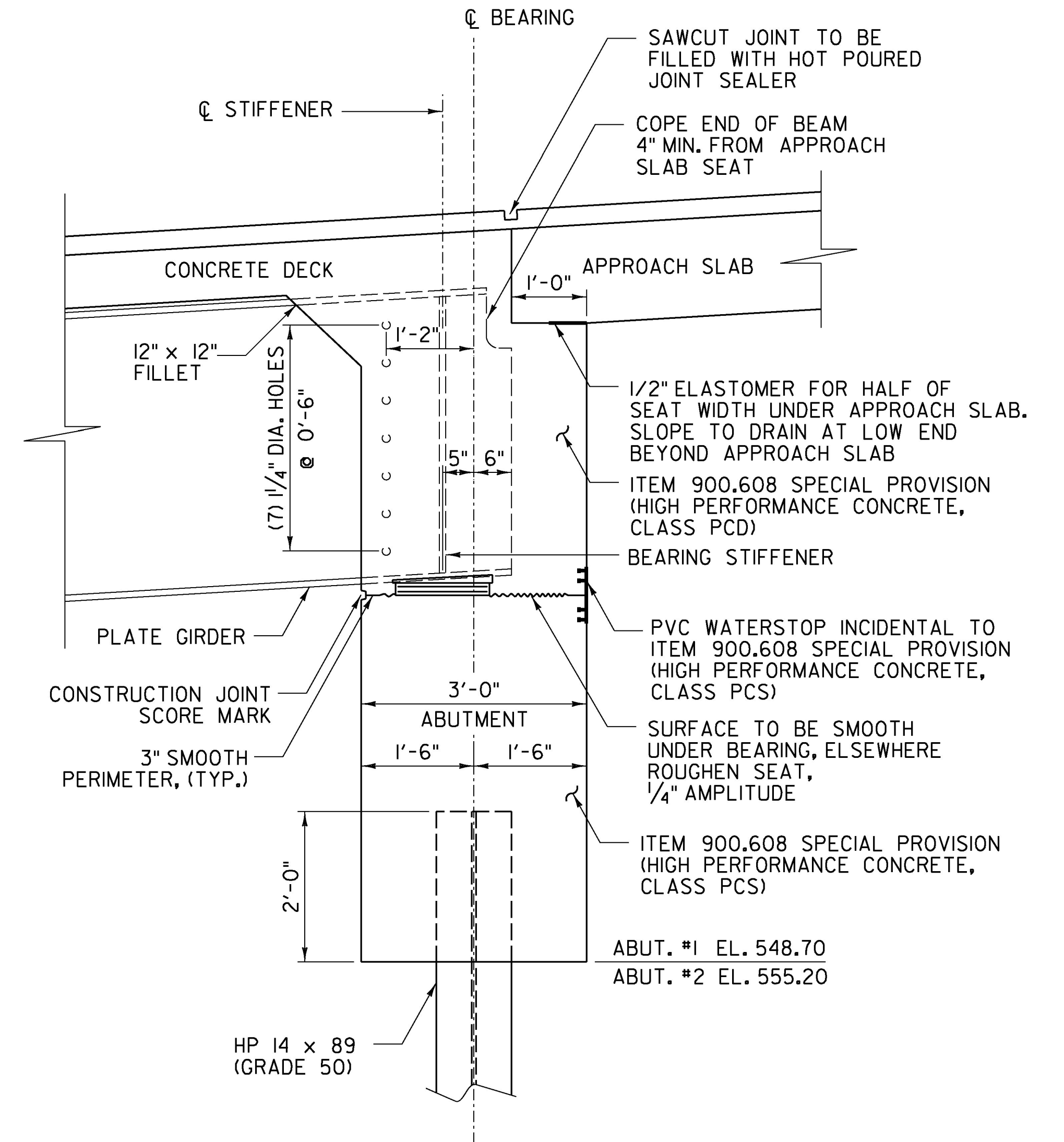
1. BEARINGS SHALL CONFORM TO THE APPLICABLE SUBSECTIONS OF STANDARD SPECIFICATIONS SECTIONS 531 AND 731.
2. ALL REINFORCEMENT BETWEEN LAYERS OF ELASTOMER SHALL BE STEEL MEETING THE REQUIREMENTS OF SUBSECTION 714.02. ALL INTERNAL STEEL PLATES SHALL BE SAND BLASTED AND FREE OF COATING, RUST AND MILL SCALE. THE PLATES SHALL BE FREE OF SHARP EDGES AND BURRS.
3. THE BEARINGS ARE DESIGNED SO THAT THE SUPERSTRUCTURE MAY BE ERECTED WHEN THE BEAM TEMPERATURE IS WITHIN THE RANGE OF 20 DEGREES F AND 70 DEGREES F WITHOUT ADJUSTING THE BEARINGS FOR TEMPERATURE. IF THE BEAM TEMPERATURE IS OUTSIDE THIS RANGE, THE BEARINGS SHALL BE RESET AS DIRECTED BY THE RESIDENT.
4. STEEL REINFORCED ELASTOMERIC BEARINGS WERE DESIGNED PER METHOD = A.
5. THE ELASTOMER WAS DESIGNED WITH A SHEAR MODULUS OF 152 PSI +/- 15%.
6. ABUTMENT 1 AND 2 BEARINGS
 - A. DESIGN DEAD LOAD REACTION = 70.0 KIPS/BEARING
 - B. DESIGN LIVE LOAD REACTION = N/A
 - C. ROTATION CAPACITY = 0.015 RADIAN
 - D. LONGITUDINAL DESIGN TRANSLATION = 0.25"
7. THE CONCRETE SURFACE UNDER THE BEARING SHALL BE LEVEL.
8. THE ELASTOMER SHALL MEET THE REQUIREMENTS OF SUBSECTION 731.03.
9. ALTERNATE CONFIGURATIONS FOR BEARINGS MAY BE SUBMITTED FOR APPROVAL. ANY ALTERNATE SUBMITTED SHALL BE DESIGNED AND CERTIFIED TO MEET THE DESIGN LOADS AND CRITERIA SHOWN ON THE PLANS.



SECTION A-A
(GIRDER NOT SHOWN FOR CLARITY)
ELASTOMERIC BEARING ASSEMBLY
SCALE 1/2" = 1'-0"



BEVELED PLATE DETAIL
NOT TO SCALE



BRIDGE END DETAIL
SCALE 3/4" = 1'-0"

PROJECT NAME:	ST JOHNSBURY
PROJECT NUMBER:	BRO 1447(30)
FILE NAME:	z12j164end det.dgn
PROJECT LEADER:	M. CHENETTE
DESIGNED BY:	N. TIRK
BRIDGE END DETAILS	
PLOT DATE:	9/30/2016
DRAWN BY:	L. BUXTON
CHECKED BY:	T. KNIGHT/N. TIRK
SHEET	32 OF 76

