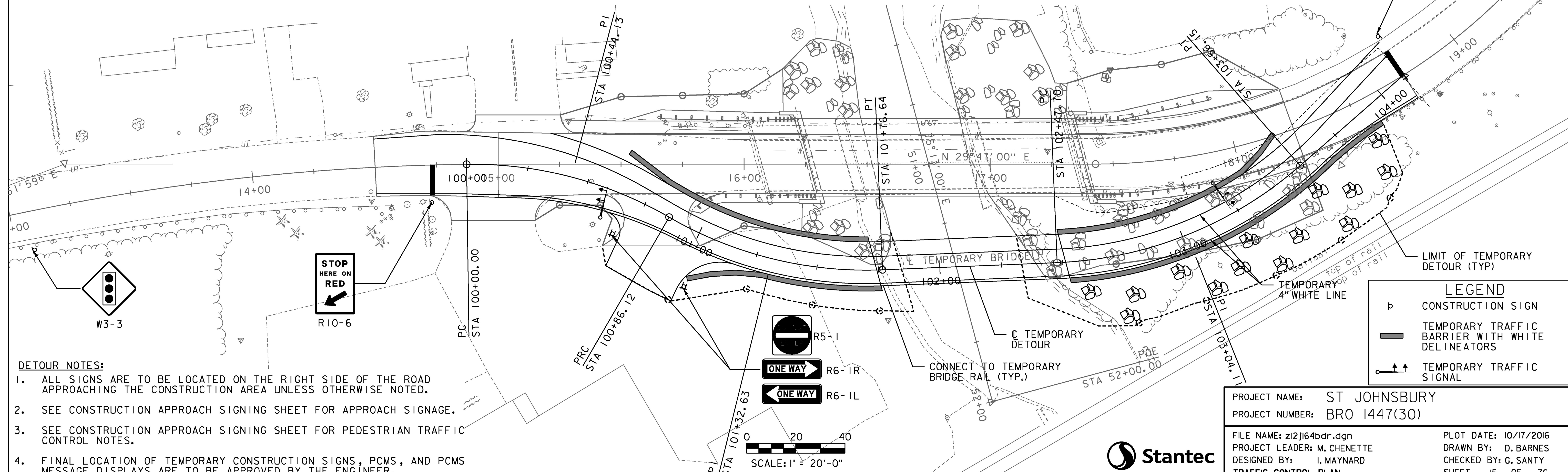
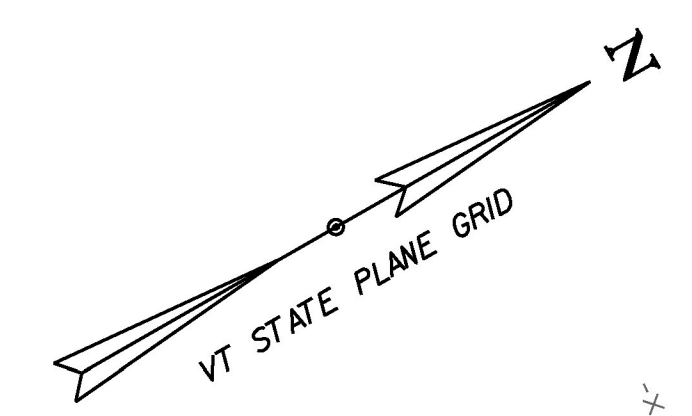


GENERAL TRAFFIC CONTROL NOTES

1. THE TRAFFIC CONTROL PLAN IS SCHEMATIC ONLY AND SHOULD BE USED AS A REFERENCE. THE CONTRACTOR SHALL DEVELOP AND IMPLEMENT SITE SPECIFIC TRAFFIC CONTROL PLAN FOR TEMPORARY BRIDGE PER THE LATEST VERSION OF THE MANUAL FOR UNIFORM TRAFFIC CONTROL DEVICES. THE CONTRACTOR SHALL SUBMIT TO THE PROJECT MANAGER AND ALLOW THE 14 CALENDAR DAYS TO REVIEW AND ACCEPT THE PROPOSED PLANS BEFORE THEY ARE TO BE IMPLEMENTED. NO WORK SHALL COMMENCE UNTIL THE TRAFFIC CONTROL AND PROTECTION PLAN HAS BEEN APPROVED.
2. ALL ITEMS REQUIRED TO PREPARE, SUBMIT AND IMPLEMENT THE CONTRACTOR'S PLAN, INCLUDING ANY NECESSARY REVISION TO THE PLAN WILL BE INCLUDED IN THE BID UNIT PRICE FOR ITEM 900.645 SPECIAL PROVISION (TRAFFIC CONTROL, ALL-INCLUSIVE). THE PAY ITEM INCLUDES, BUT IS NOT LIMITED TO, THE FOLLOWING:
 TRAFFIC CONTROL PLAN
 TEMPORARY TRAFFIC BARRIERS
 ENERGY ABSORPTION ATTENUATORS
 BARRICADES
 DRUMS/CONES
 ON PROJECT CONSTRUCTION SIGNING
 TEMPORARY PAVEMENT MARKINGS
 SAW CUTS
 TEMPORARY DETOUR CONSTRUCTION INCLUDING: SUPERPAVE BITUMINOUS CONCRETE PAVEMENT TYPE IIIS, SUBBASE OF DENSE GRADED CRUSHED STONE, EARTHWORK, STONE FILL TYPE III, GEOTEXTILE UNDER STONE FILL, GRUBBING MATERIAL, AND ANY EROSION PREVENTION AND SLOPE STABILIZATION OF THE SLOPES OF THE DETOUR.
3. ACCESS TO ALL EXISTING SIDE ROADS, DRIVES AND PARKING AREAS SHALL BE MAINTAINED AT ALL TIMES DURING CONSTRUCTION.
4. DESIGN OF THE SIGNAL SUPPORTS AND ANY REQUIRED GUYING IS THE RESPONSIBILITY OF THE CONTRACTOR AND WILL BE PAID UNDER ITEM 678.40 TEMPORARY TRAFFIC SIGNAL SYSTEM.
5. SIGNAL TIMING / TIMING ADJUSTMENTS REQUESTED BY THE ENGINEER SHALL BE ACCOMPLISHED WITHIN A 48 HOUR PERIOD AND PAYMENT WILL BE INCIDENTAL TO ITEM 678.40, TEMPORARY TRAFFIC SIGNAL SYSTEM. THE ENGINEER SHALL MAKE SEVERAL TRIAL RUNS TO DETERMINE THE PROPER ALL-RED CLEARANCE INTERVAL.
6. SIGNAL FACES SHALL BE LED AND CONSIST OF 12" LENSES. (RED, YELLOW, AND GREEN).
7. THE BOTTOM OF THE HOUSING OF A SIGNAL FACE SUSPENDED OVER A ROADWAY SHALL NOT BE LESS THAN 16.5 FEET NOR MORE THAN 19 FEET ABOVE THE PAVEMENT GRADE AT THE CENTER OF THE ROADWAY. THE BOTTOM OF A SIGNAL FACE NOT MOUNTED OVER A ROADWAY SHALL NOT BE LESS THAN 8 FEET NOR MORE THAN 15 FEET ABOVE THE GROUND. CAUTION SHOULD BE USED TO INSURE COMPLIANCE WITH THE HEIGHT REQUIREMENTS IN THE EVENT THE NEW APPROACH GRADES DIFFER SIGNIFICANTLY FROM THE OLD ROAD GRADE.
8. SIGNAL FACES FOR ANY ONE APPROACH SHALL NOT BE LESS THAN 8 FEET APART MEASURED HORIZONTALLY BETWEEN CENTER FACES.

TRAFFIC CONTROL ITEMS NOT PAID FOR IN THE UNIT PRICE BID FOR ITEM 900.645 SPECIAL PROVISION (TRAFFIC CONTROL, ALL-INCLUSIVE), AND PAID FOR SEPARATELY ARE THE FOLLOWING:
 ITEM 630.10 UNIFORMED TRAFFIC OFFICERS
 ITEM 630.15 FLAGGERS
 ITEM 641.15 PORTABLE CHANGEABLE MESSAGE SIGN
 ITEM 678.40 TEMPORARY TRAFFIC SIGNAL SYSTEM

9. SIGNAL HEADS MAY BE HUNG ON A SPAN WIRE OR ON A CANTILEVER MAST ARM. AT LEAST ONE SIGNAL HEAD SHALL BE UNMISTAKABLY IN LINE WITH THE CENTER OF APPROACHING TRAFFIC AT ALL TIMES. THE SECOND SIGNAL HEAD MAY BE POST MOUNTED, LOCATED AT A DISTANCE OF NO GREATER THAN 14.5 FEET FROM THE CENTER OF THE APPROACH LANE WHEN THE STOP BAR IS 40 FEET FROM THE SIGNAL HEAD. CONSULT THE CURRENT EDITION OF THE M.U.T.C.D. FOR ADDITIONAL INFORMATION CONCERNING SIGNAL PLACEMENT.
10. THE SIGNAL SYSTEM SHALL CONSIST OF POLES, SIGNS AND POSTS, WARNING SIGNS, LUMINAIRES, FLASHING BEACONS, ASSOCIATED PAVEMENT MARKINGS, AND SIGNAL EQUIPMENT TO PROVIDE FOR AN ADEQUATE DESIGN. IT ALSO INCLUDES PERMITS AND COSTS ASSOCIATED WITH PROVIDING ELECTRICAL POWER. ALL WORK WILL BE PAID UNDER ITEM 678.40 "TEMPORARY TRAFFIC SIGNAL SYSTEM."
11. INSTALL WIRING BETWEEN SIGNAL POLES TO PROVIDE FOR A SAFE INSTALLATION. ATTACHMENT TO UTILITY POLES TO BE COORDINATED BY THE CONTRACTOR WITH THE UTILITY COMPANY. PAYMENT WILL BE CONSIDERED INCIDENTAL TO ITEM 678.40, TEMPORARY TRAFFIC SIGNAL SYSTEM.
12. PLACE TEMPORARY POLES BEHIND GUARDRAIL WHERE POSSIBLE, OR OUTSIDE CLEAR ZONE.
13. POLES SUPPORTING SPAN WIRES AND/OR MAST ARMS SHALL BE ADEQUATELY BRACED OR GUYED AND SHALL BE PLACED SO AS NOT TO CREATE A HAZARD TO THE TRAVELING PUBLIC.
14. ALL TEMPORARY SIGNAL EQUIPMENT, SIGNS, ETC., SHALL BELONG TO THE CONTRACTOR AT THE END OF THE PROJECT AND THE CONTRACTOR SHALL BE RESPONSIBLE FOR THEIR REMOVAL INCLUDING ANY TEMPORARY PAVEMENT MARKINGS, UTILITY POLES, WIRES, ETC. PAYMENT WILL BE CONSIDERED INCIDENTAL TO ITEM 678.40, TEMPORARY TRAFFIC SIGNAL SYSTEM.
15. LUMINAIRES SHALL BE INSTALLED AT EACH OF THE APPROACHES TO ADEQUATELY LIGHT THE STOP BAR AREAS. HIGH PRESSURE SODIUM OR L.E.D. LUMINAIRES ARE ACCEPTABLE FORMS OF LAMPS. THE MOUNTING HEIGHT FOR LUMINAIRES SHALL BE DETERMINED BY THE CONTRACTOR. ILLUMINANCE SHALL BE MEASURED AT NIGHTTIME AFTER INSTALLATION AND AT EACH STOP BAR SHALL BE NO LESS THAN 1.0 FOOT-CANDLES AND NOT TO EXCEED 2.0 FOOT-CANDLES. PAYMENT WILL BE CONSIDERED INCIDENTAL TO ITEM 678.40, TEMPORARY TRAFFIC SIGNAL SYSTEM.
16. STOP BARS SHALL BE LOCATED A MINIMUM OF 40' AND A MAXIMUM OF 120' FROM THE NEAREST SIGNAL HEAD.
17. ALL ELECTRIC WORK SHALL MEET THE REQUIREMENTS OF THE NATIONAL ELECTRICAL CODE AND STATE INSPECTOR.
18. ALL STOP SIGNS AND ANY TRAFFIC SIGNS MADE IRRELEVANT DUE TO THE TEMPORARY SIGNAL SHALL BE COVERED DURING OPERATION OF THE TEMPORARY SIGNAL, OR AT THE DISCRETION OF THE ENGINEER. THE COSTS OF COVERING AND UNCOVERING THESE SIGNS WILL BE CONSIDERED INCIDENTAL TO ITEM 900.645 SPECIAL PROVISION (TRAFFIC CONTROL, ALL-INCLUSIVE).
19. THE CONTRACTOR SHALL BE RESPONSIBLE FOR DETERMINING SIGNAL PHASING. THE CONTRACTOR SHALL SUBMIT PHASING DIAGRAM TO THE ENGINEER FOR APPROVAL. THE CONTRACTOR SHALL MAKE SIGNALS OPERATIONAL ONLY AFTER RECEIVING APPROVAL OF THE PHASING DIAGRAM BY THE ENGINEER. DEVELOPMENT OF THE PHASING DIAGRAM WILL BE CONSIDERED INCIDENTAL TO ITEM 678.40, TEMPORARY TRAFFIC SIGNAL SYSTEM.



- DETOUR NOTES:**
1. ALL SIGNS ARE TO BE LOCATED ON THE RIGHT SIDE OF THE ROAD APPROACHING THE CONSTRUCTION AREA UNLESS OTHERWISE NOTED.
 2. SEE CONSTRUCTION APPROACH SIGNING SHEET FOR APPROACH SIGNAGE.
 3. SEE CONSTRUCTION APPROACH SIGNING SHEET FOR PEDESTRIAN TRAFFIC CONTROL NOTES.
 4. FINAL LOCATION OF TEMPORARY CONSTRUCTION SIGNS, PCMS, AND PCMS MESSAGE DISPLAYS ARE TO BE APPROVED BY THE ENGINEER.

PROJECT NAME:	ST JOHNSBURY
PROJECT NUMBER:	BRO 1447(30)
FILE NAME:	z12j164bdr.dgn
PROJECT LEADER:	M. CHENETTE
DESIGNED BY:	I. MAYNARD
TRAFFIC CONTROL PLAN	
PLOT DATE:	10/17/2016
DRAWN BY:	D. BARNES
CHECKED BY:	G. SANTY
SHEET	15 OF 76

