

GPS CONTROL POINTS

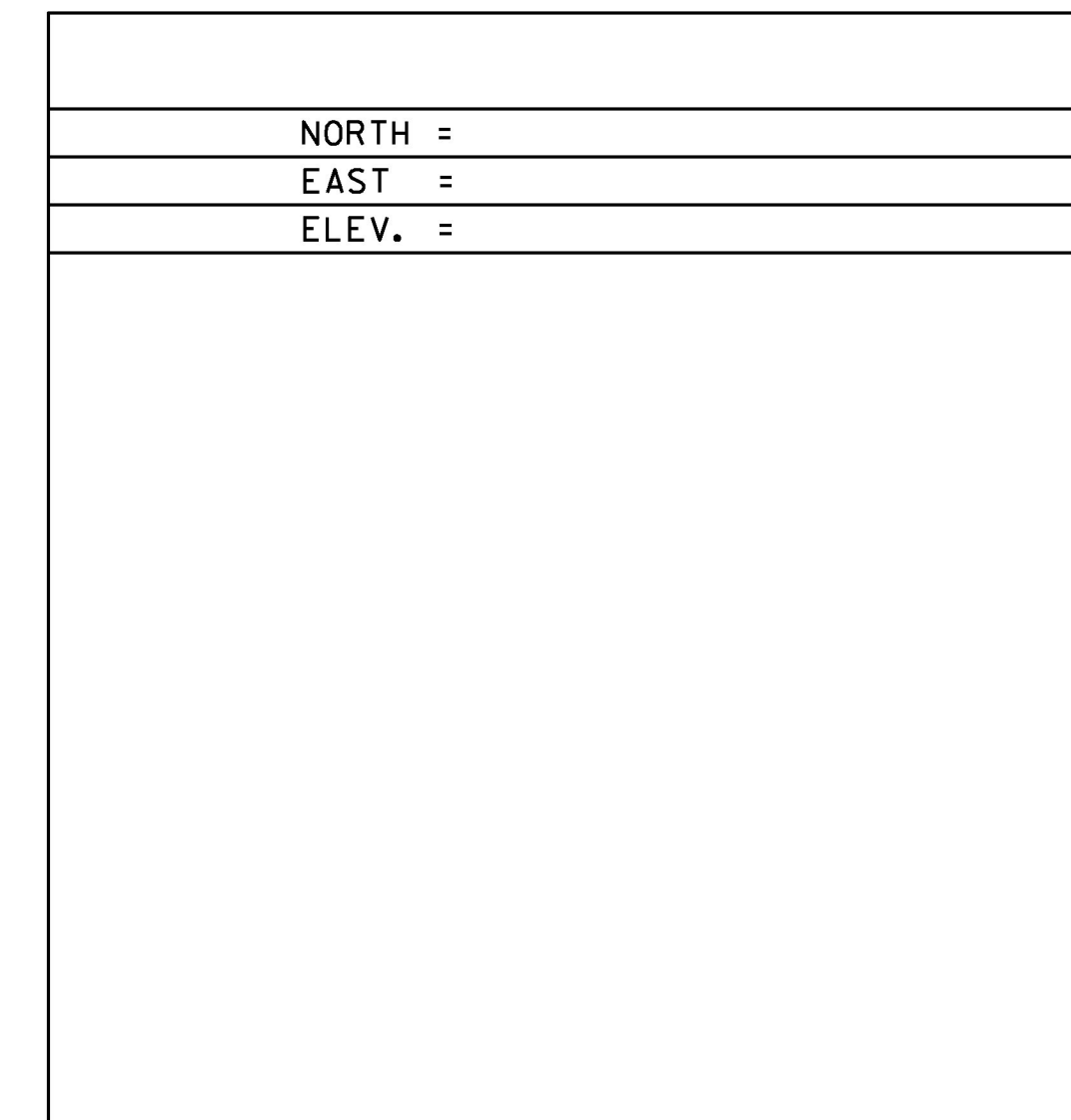
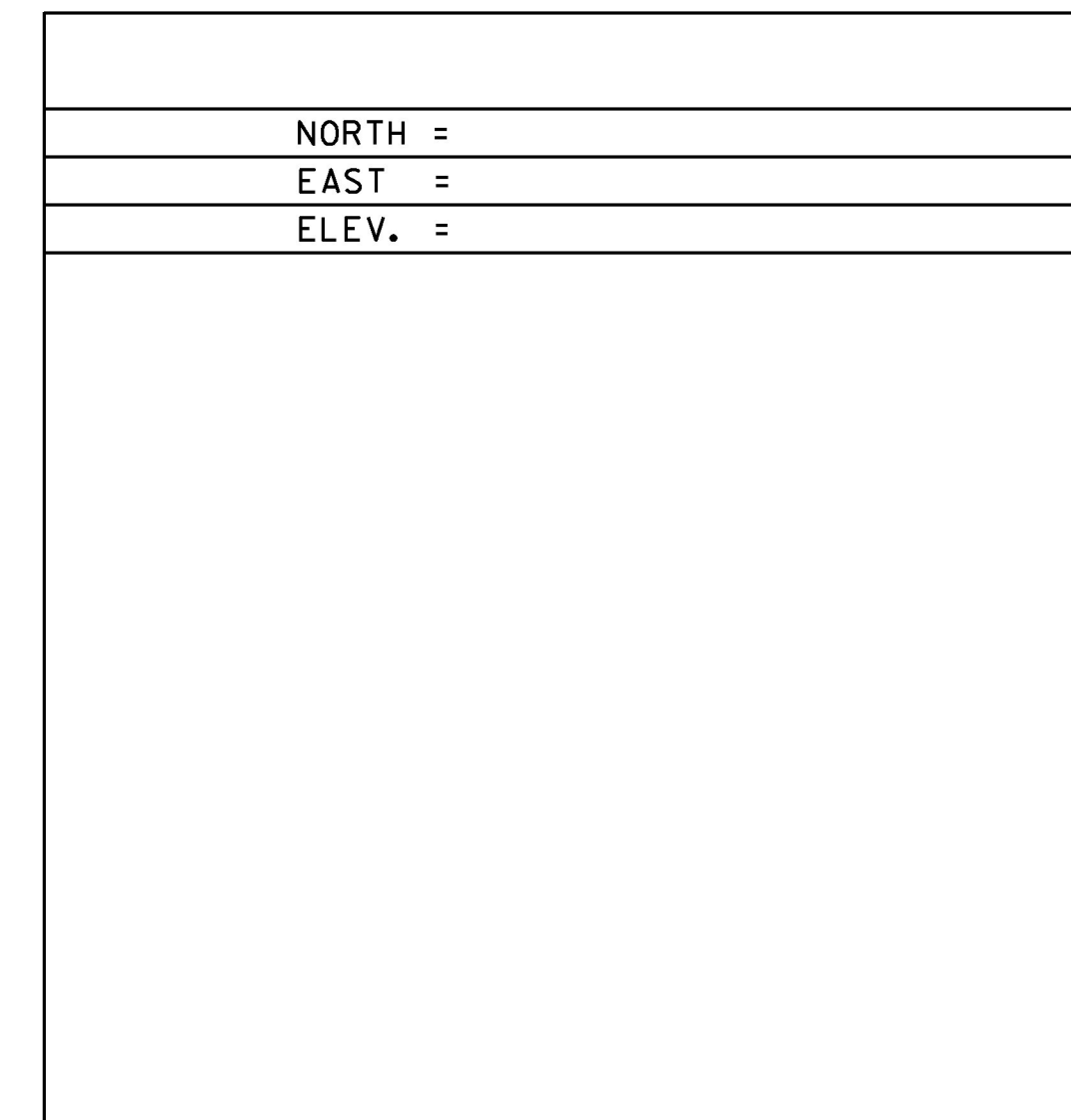
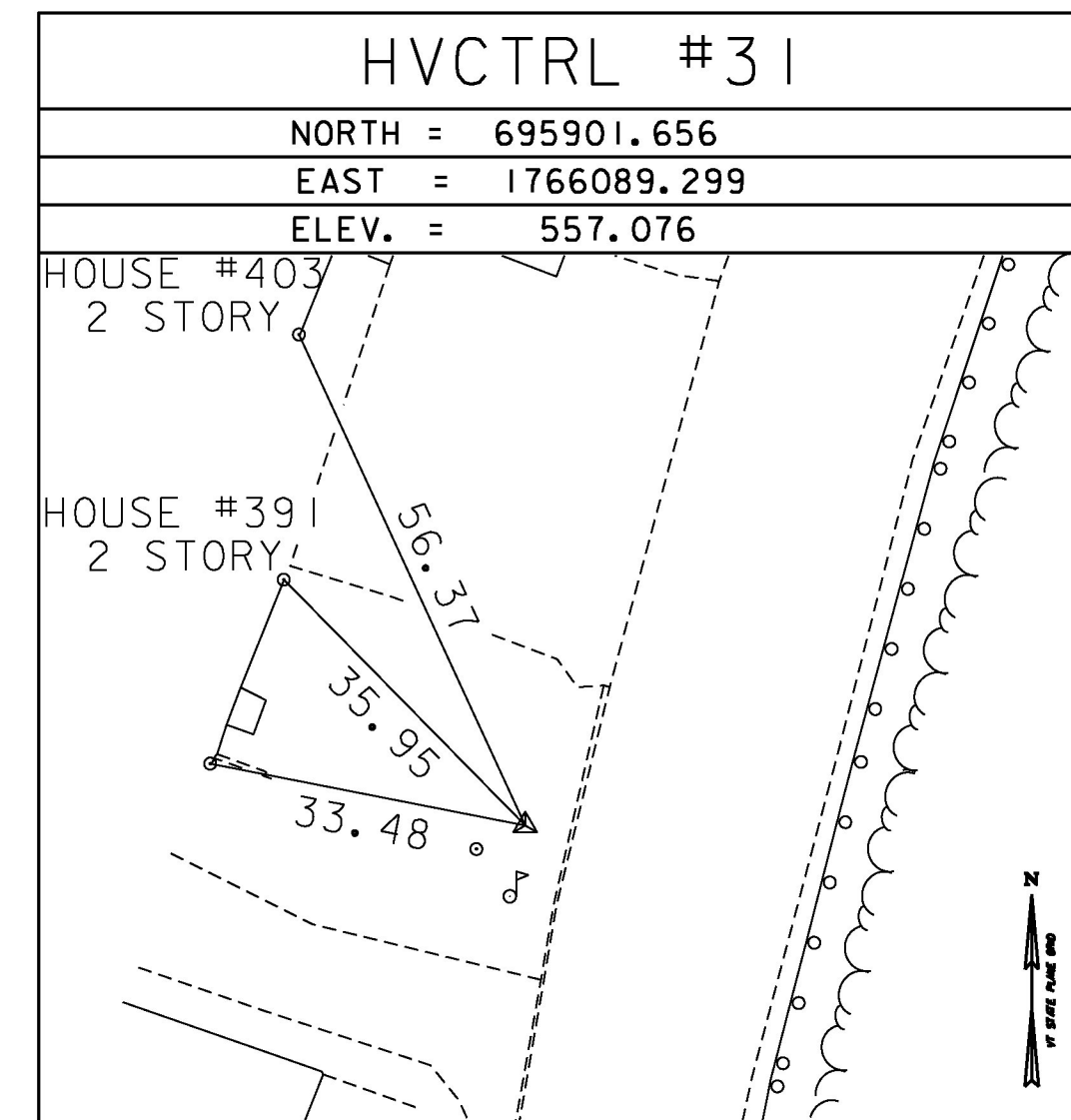
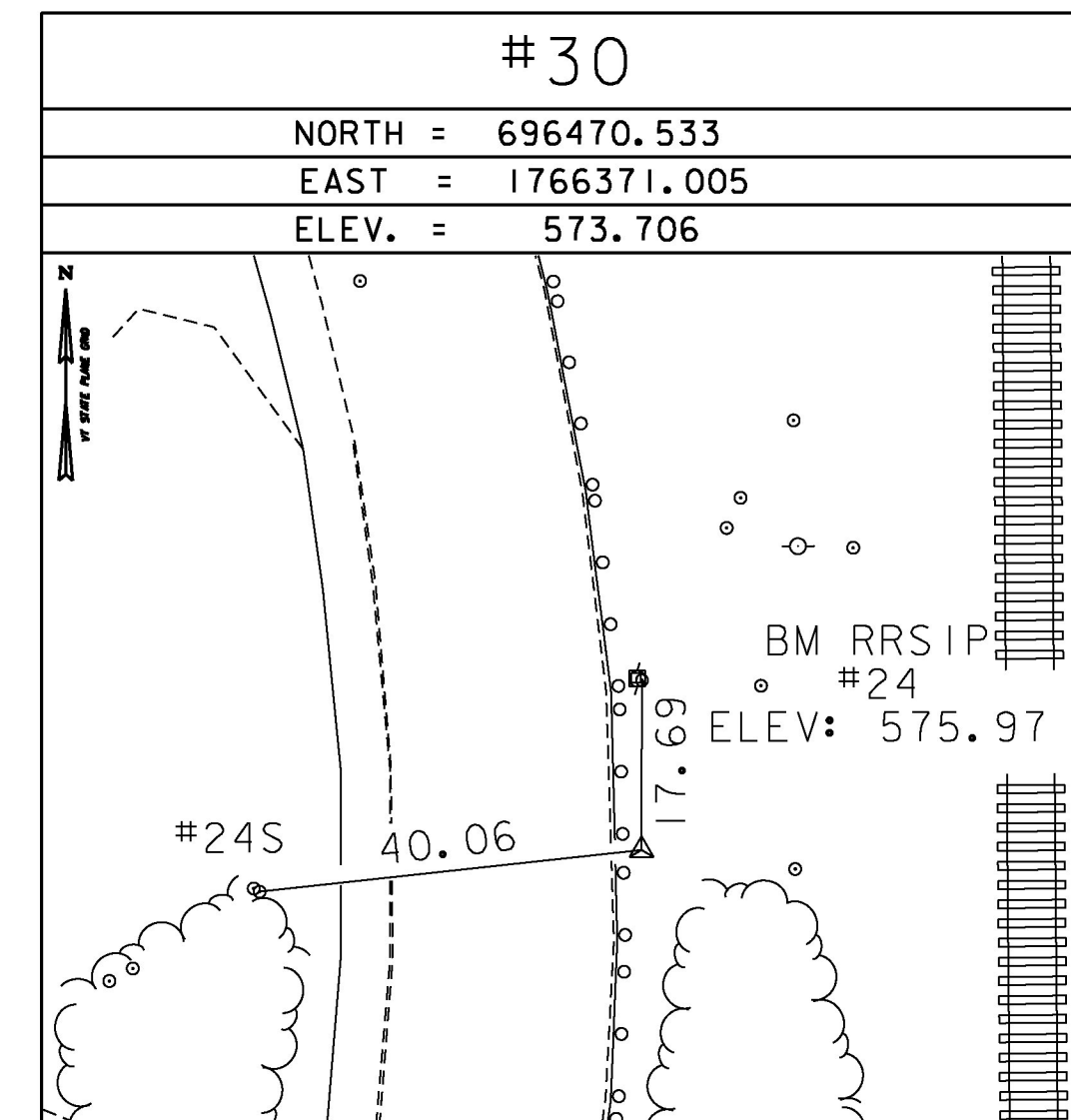
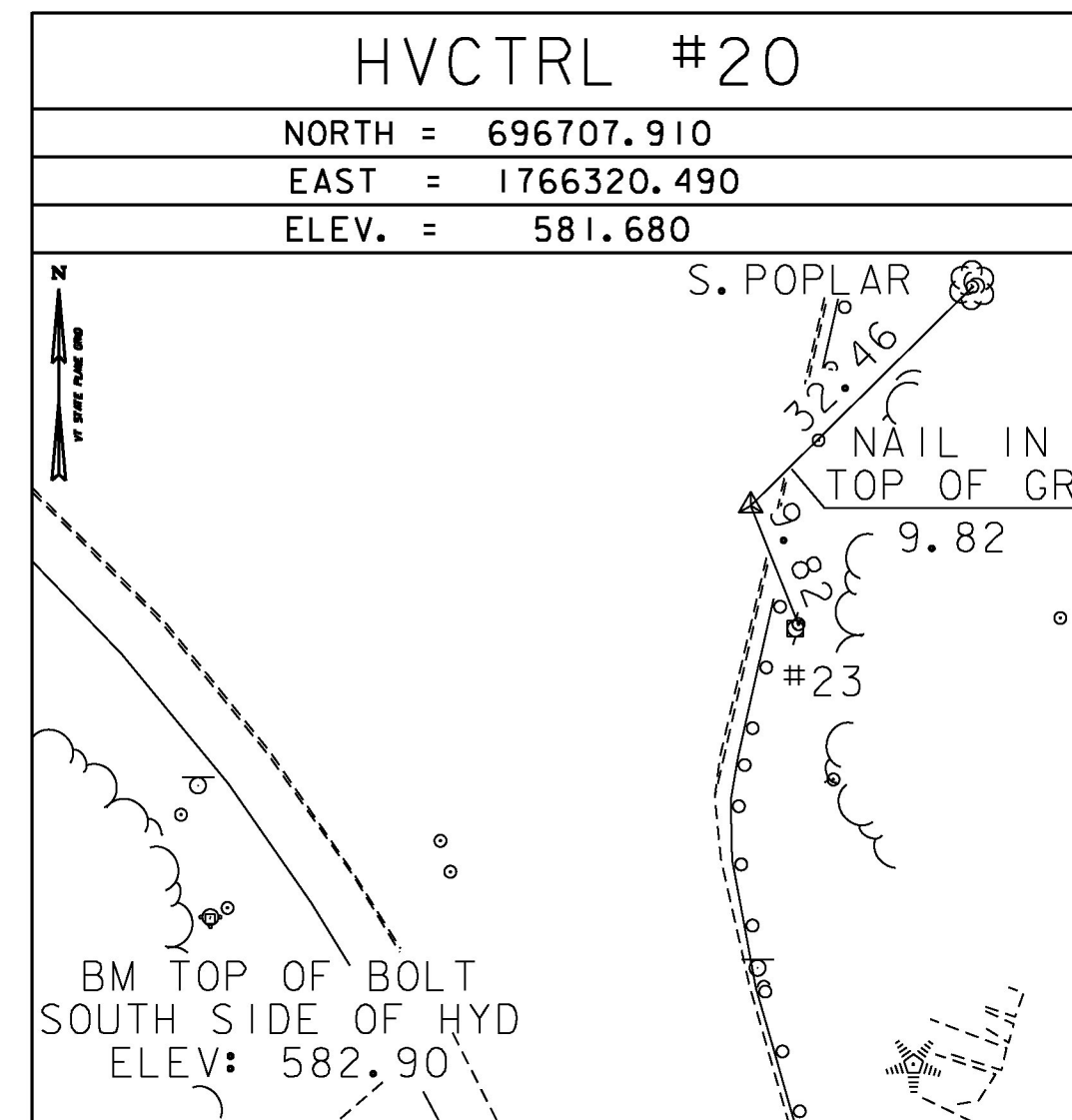
HVCTRL #1
 BAY ST
 NORTH = 698954.890
 EAST = 1767290.970
 ELEV. = 573.601

17.9 M WSW OF AND ABOUT 0.4 M HIGHER THAN THE CL OF BAY STREET, 1.3 M E OF THE E EDGE OF THE GRAVEL DRIVE, 14.3 M SW OF POLE NO 3/3B, 31.6 M SE OF THE SE CORNER OF THE ADDITION OF THE WASHINGTON COUNTY RAILROAD BUILDING, 9.1 M NW OF THE NW CORNER OF A CHAIN LINK FENCE, 31.2 M E OF THE E RAIL OF THE MOST EASTERLY SET OF TRACKS, 36.8 M SSW OF AN UPRIGHT STEEL I-BEAM AT THE SE CORNER OF A SINGLE STORY, DOUBLE BAY, BRICK BUILDING AT THE CVPS BAY STREET SUBSTATION, AND 0.3 M W OF A WITNESS POST.

HVCTRL #2
 R 54
 NORTH = 696739.040
 EAST = 1766088.430
 ELEV. = 580.69

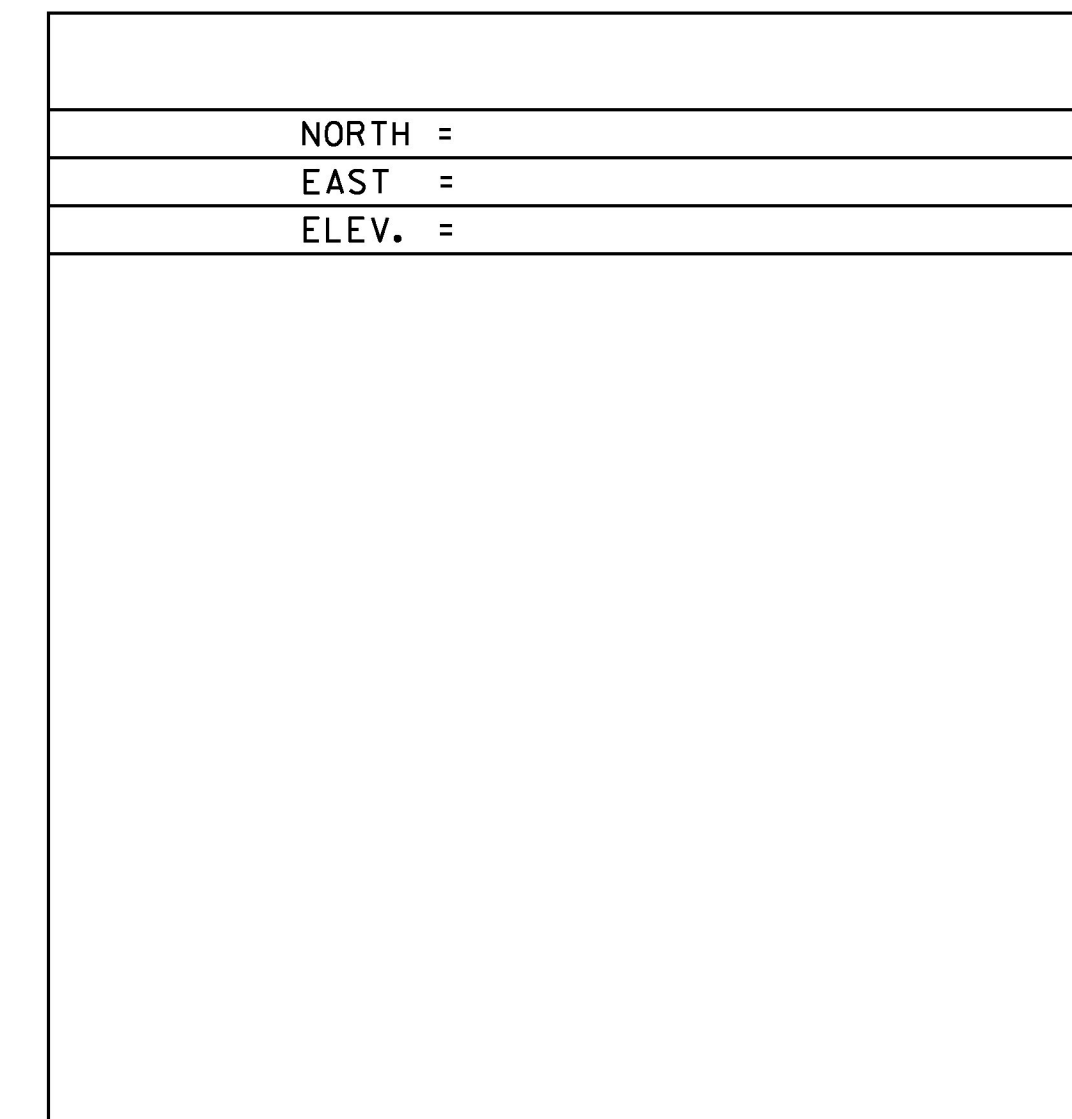
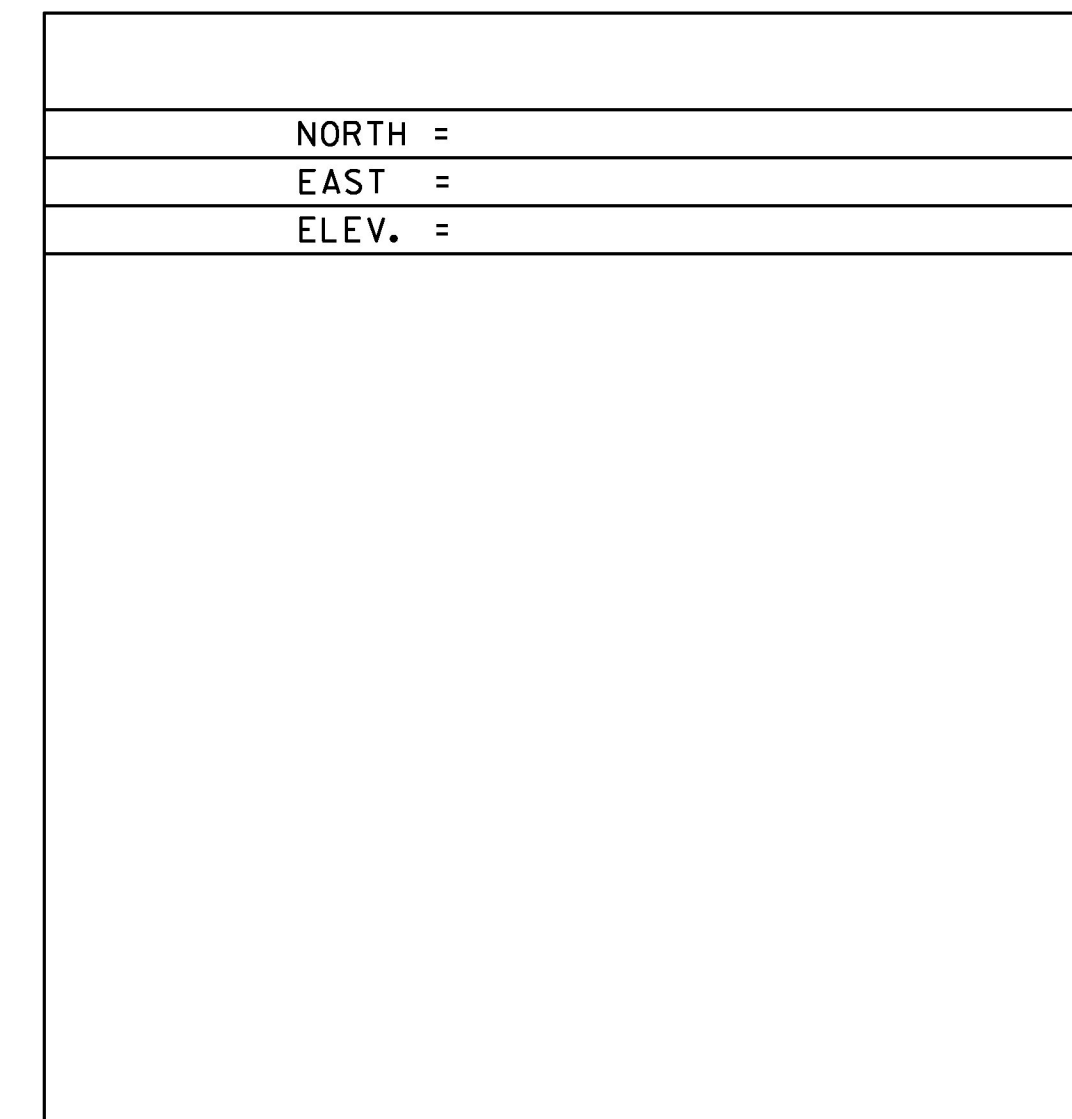
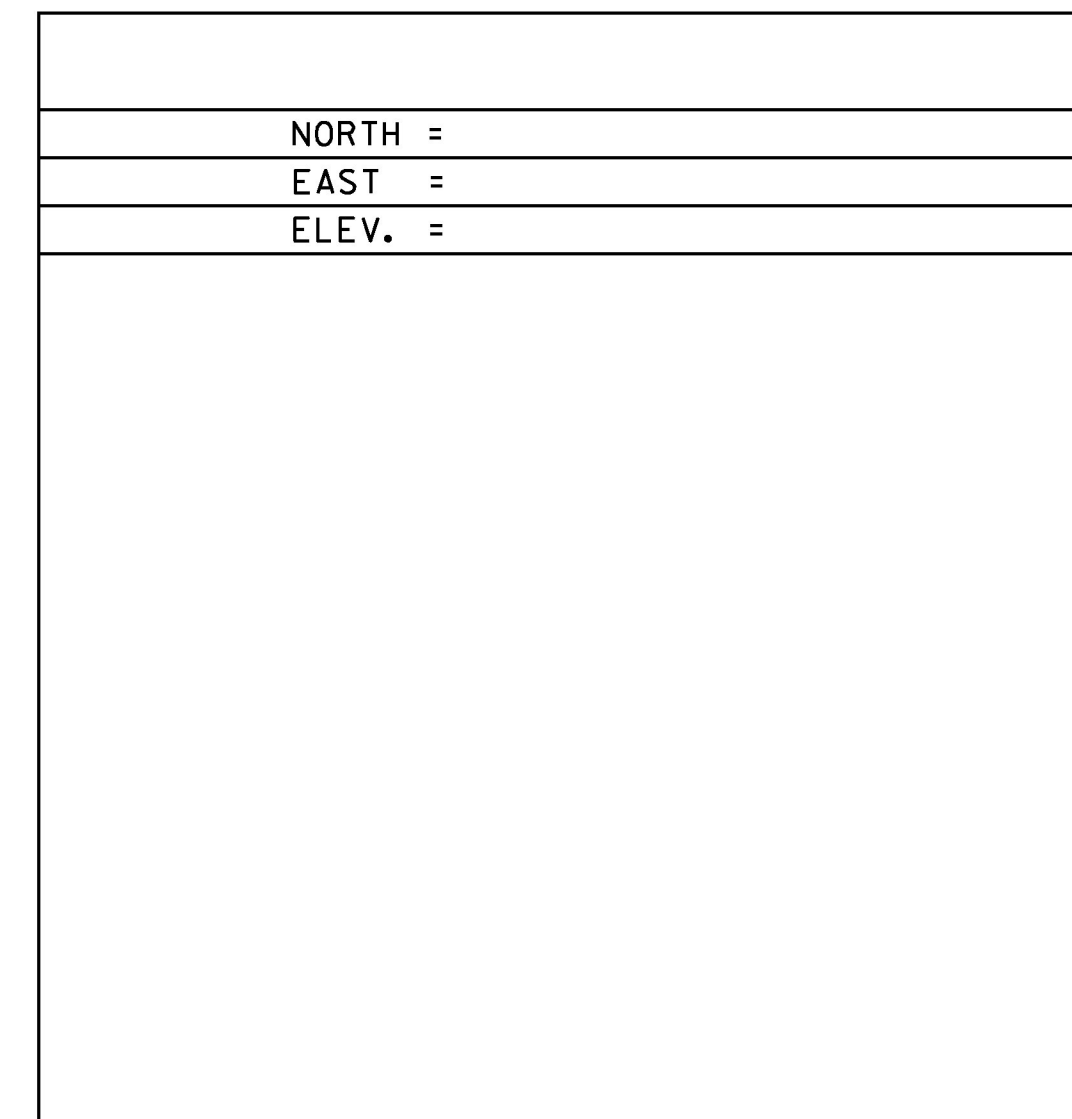
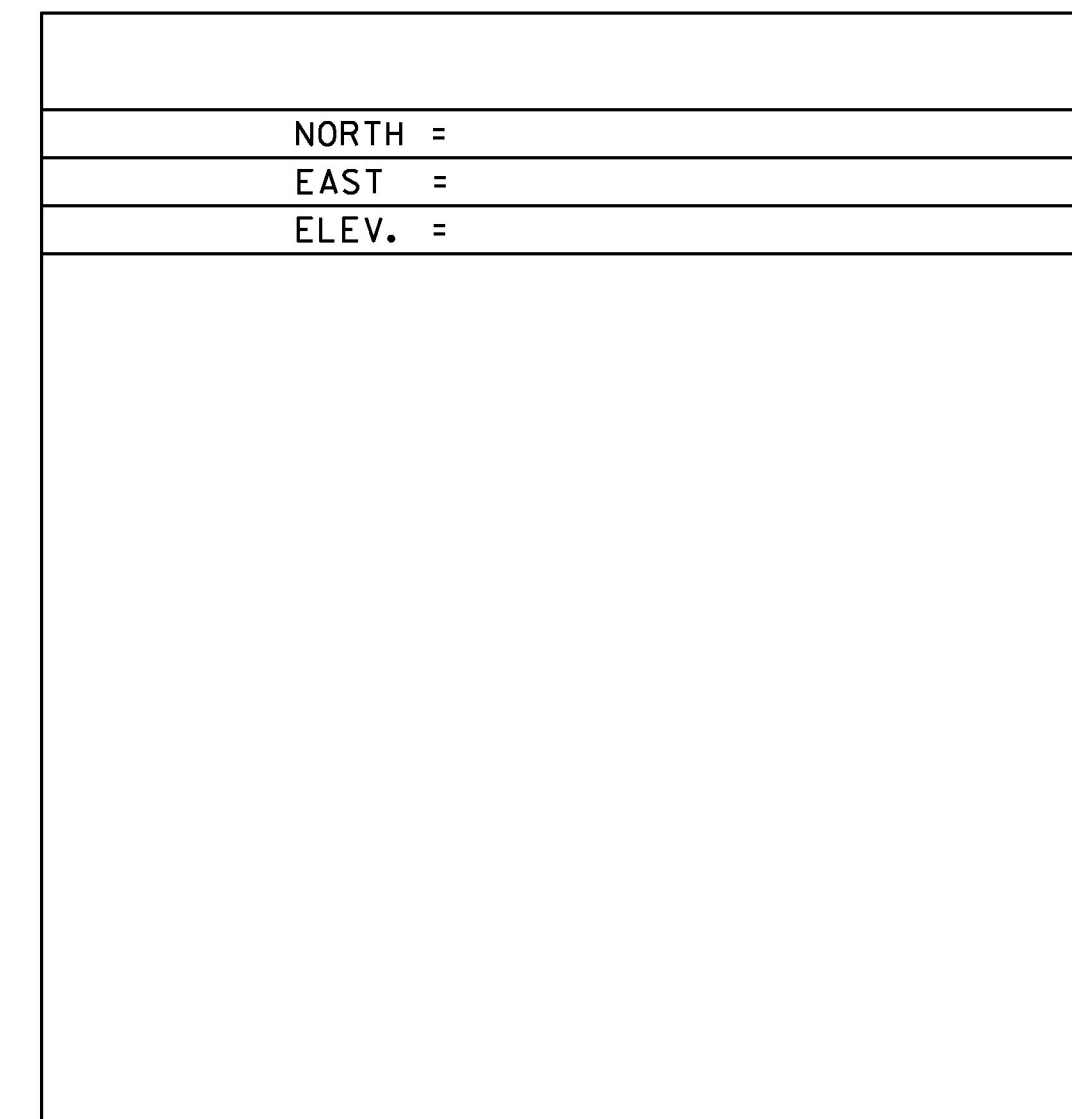
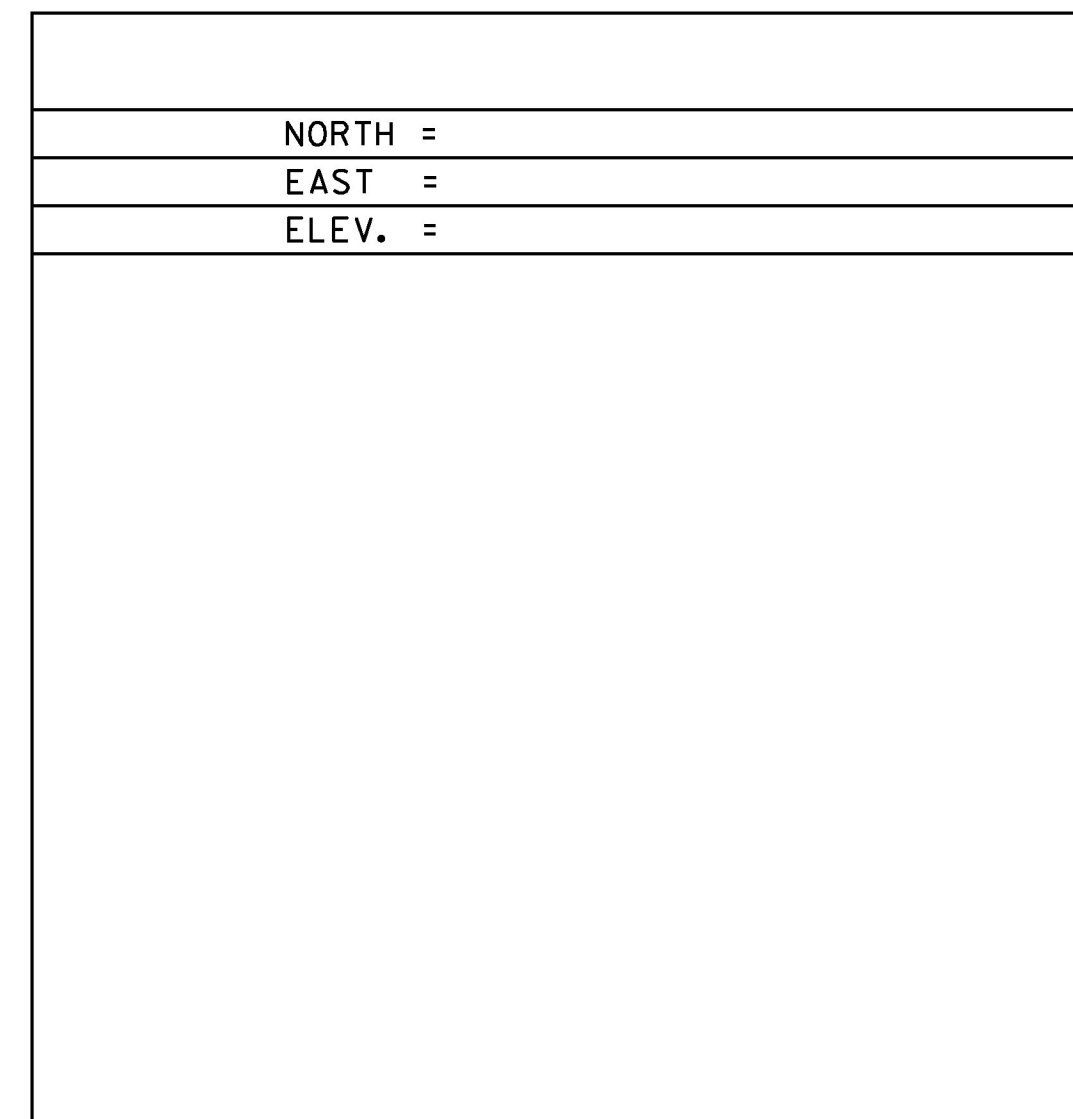
GENERAL LOCATION, ST. JOHNSBURY, VT. TO REACH FROM THE INTERSECTION OF U.S. ROUTE 5 AND U.S. ROUTE 2 EAST IN DOWNTOWN ST. JOHNSBURY GO SOUTH ALONG U.S. ROUTE 5 FOR 0.6 MI (1.0 KM) TO THE INTERSECTION OF SOUTH STREET LEFT AND ALT 5 RIGHT AND THE MARK ON THE RIGHT IN THE SOUTHWEST QUADRANT OF THE INTERSECTION. THE MARK IS A STANDARD DISK SET INSIDE A 4 INCH PVC PIPE. IT IS 1.6 M (5.2 FT) NORTHWEST OF THE NORTHWEST EDGE OF PAVEMENT OF U.S. ROUTE 5, 5.9 M (19.4 FT) SOUTH OF A WATER SHUT OFF RISER, 10.6 M (34.8 FT) SOUTHWEST OF A 1.2 M (3.9 FT) X 1.2 M (3.9 FT) CONCRETE DRAINAGE INLET, 0.8 M (2.6 FT) NORTHWEST OF A STEEL LIGHT POLE, AND 0.3 M (1.0 FT) SOUTHEAST OF A METAL WITNESS POST. STATION RECOVERY (2001) RECOVERY NOTE BY VERMONT GEODETIC SURVEY 2001 (CHR) TO REACH FROM THE INTERSECTION OF U.S. ROUTE 5 AND U.S. ROUTE 2 EAST IN DOWNTOWN ST JOHNSBURY GO SOUTH ALONG U.S. ROUTE 5 FOR 0.6 MI TO THE INTERSECTION OF MAIN STREET LEFT AND RIGHT AND THE SITE OF THE MARK ON THE RIGHT IN THE SOUTHWEST QUADRANT OF THE INTERSECTION. NOTE, MAIN STREE RIGHT IS ALSO ALTERNATE U.S. ROUTE 5.

TRAVERSE TIES



* MAIN TRAVERSE COMPLETED 5/16/2012 BY R. GILMAN P.C. & P. WINTERS & C. CYR

ALIGNMENT TIES



DATUM	
VERTICAL	NAVD 88
HORIZONTAL	NAD 83 (96)
ADJUSTMENT	COMPASS

PROJECT NAME: ST JOHNSBURY	
PROJECT NUMBER: BRO 1447(30)	
FILE NAME: z12j164+1.dgn	PLOT DATE: 9/30/2016
PROJECT LEADER: M. CHENETTE	DRAWN BY: VTRANS
DESIGNED BY: VTRANS	CHECKED BY: VTRANS
TIE SHEET	SHEET 11 OF 76