

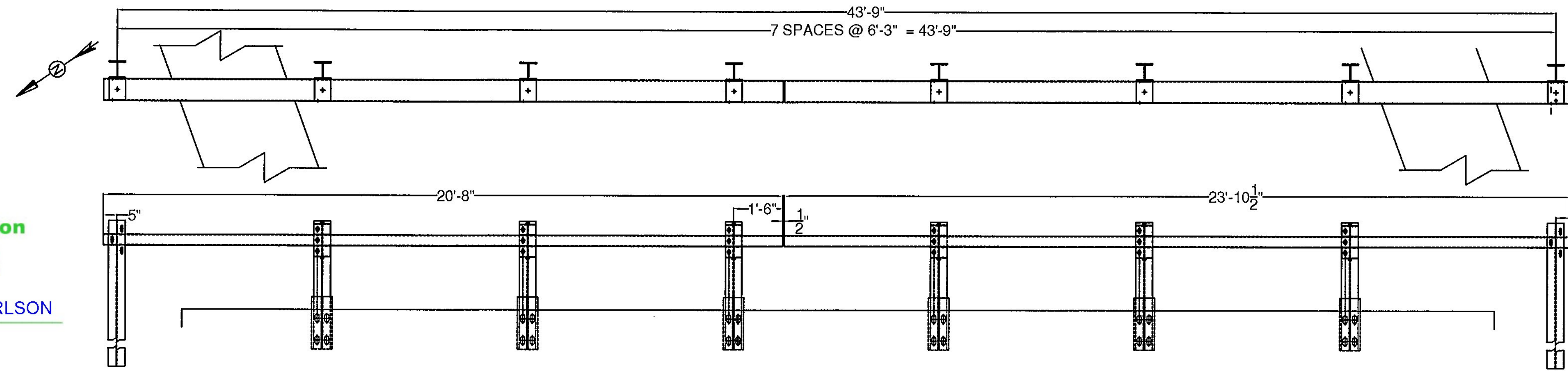
Vermont Agency of Transportation
RECEIVED

CK'D BY D. PETERSON OK'D BY C. CARLSON

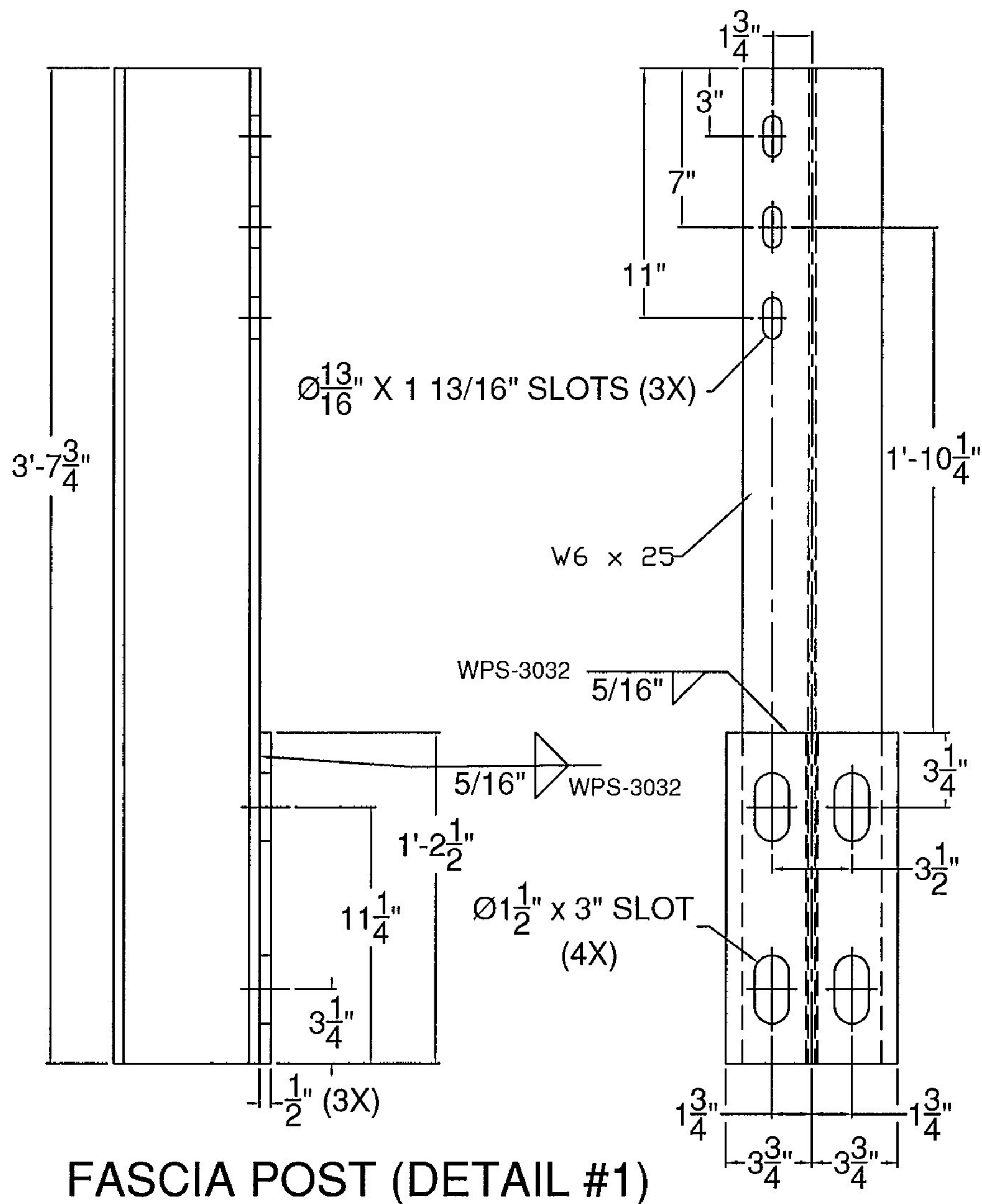
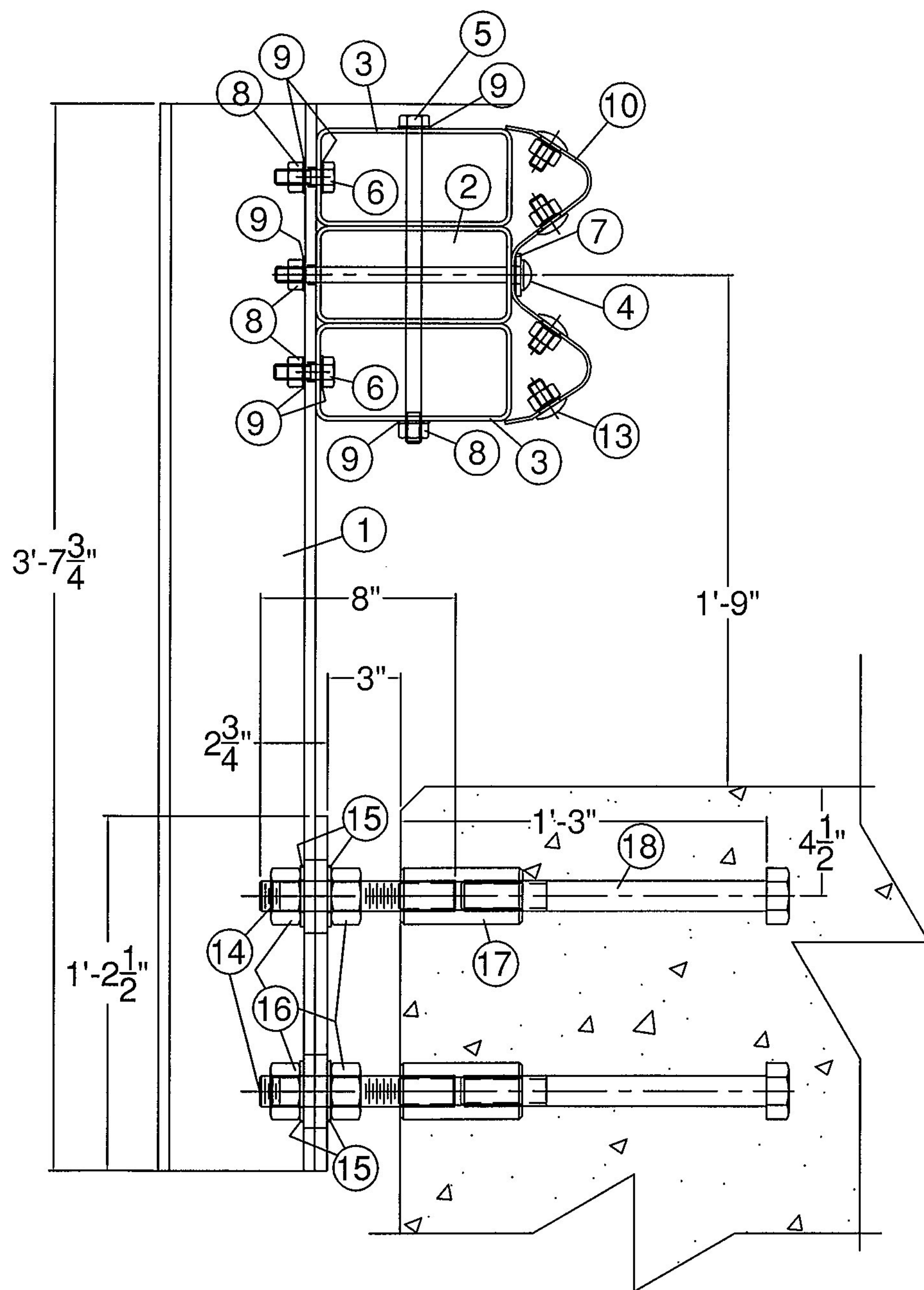
July 19, 2016

RESUBMIT NO Approved

BY C. CARLSON DATE 07/28/2016



"W" PANEL NOT SHOWN FOR DRAWING CLARITY EAST RAILING, FACING EAST



FASCIA POST (DETAIL #1)

BILL OF MATERIAL - EAST SIDE				
DET#	QTY	PART		ASTM DESIGNATION
1	6	0033.903090	W6x25, TYPE 1, FASCIA POST @ 3'-7 3/4"	ASTM A572 Gr. 50
2	1	0033.930030	HSS8x4x3/16" TUBING @ 20'-8"	ASTM A500 Gr. B
2	1	0033.930031	HSS8x4x3/16" TUBING @ 23'-10 1/2"	ASTM A500 Gr. B
3	16	0033.90045	HSS8x4x3/16" TUBE BLOCKOUT @ 6'	ASTM A500 Gr. B
4	8	0080.05710	5/8"x10" POST BOLT, NUT, & F.W.	ASTM A307
5	8	0080.15595	5/8"x13" HEX BOLT	ASTM A307
6	20	0080.15036	5/8"x2" HEX BOLT	ASTM A307
7	8	0080.15913	3/16"x1 3/4"x3" SPECIAL WASHER	ASTM A36
8	32	0080.15901	5/8" HEX NUT	ASTM A307
9	60	0080.15911	5/8" FLAT WASHER	ASTM A307
10	3	6043.00012	10 GAUGE "W" BEAM @ 12'-6" C.-C.	AASHTO M180, CLASS B, TYPE II
10	1	6043.00002	10 GAUGE "W" BEAM @ 6'-3" C.-C.	AASHTO M180, CLASS B, TYPE II
11	2	0033.90301	W6X25 POST @ 6'-0" O.A. (POST #1)	ASTM A572 Gr. 50
* 12	3	-	DELINEATOR - TO BE SUPPLIED BY FR LAFAYETTE	ALUMINUM
* 13	32	0080.15013	5/8"x1-1/4" SPLICE BOLT (PANEL ASS'Y)	ASTM A307
* 13	32	0080.15905	5/8"x1-1/4" RECESSED NUT (PANEL ASS'Y)	ASTM A307
** 14	26	0042.21408	1 1/4"x8" STUD	ASTM A449
** 15	52	0080.19922	5/16"x2 1/2"x3 1/2" FASCIA PLATE WASHERS	ASTM A572 Gr. 50
** 16	52	0080.19918	1 1/4" HEX NUT	ASTM A563
** 17	26	0080.19921	1 1/4" x 5" COUPLER NUT W/ RT. HAND MACH. THD.	ASTM A563
** 18	26	0042.21412	1 1/4" x 12" MACHINE BOLT, THREAD LEN. @ 3'	ASTM A449
19	1	0033.90074	C7x9.8 CHANNEL SPLICE @ 2'-6 1/2"	ASTM A36

* - SUPPLIED BY OTHERS ** - TWO ADDITIONAL FOR Vtrans QA TESTING

- NOTES:
- ALL WORK AND MATERIALS SHALL CONFORM TO SECTION 525.
 - GRIND ALL EDGES TO A MINIMUM RADIUS OF 1/16", PRIOR TO GALVANIZING.
 - ALL POSTS SHALL BE SET NORMAL TO GRADE.
 - SPLICES FOR THE STEEL BEAM GUARDRAIL SHALL LAP IN THE DIRECTION OF TRAFFIC.
 - A RAILING JOINT SPLICE SHALL BE PROVIDED IN ANY RAIL BAY SPANNING THE END OF AN INTEGRAL ABUTMENT BRIDGE AND AT ALL SUPERSTRUCTURE EXPANSION JOINTS.
 - SEE STANDARD DRAWING G-1 FOR DETAILS OF DELINEATORS. A DELINEATOR SHALL BE INSTALLED AT 30 FOOT SPACING OR THE NEAREST POST. WHITE IS TO BE INSTALLED ON THE DRIVER'S RIGHT. FOR ONE WAY BRIDGES, YELLOW IS TO BE INSTALLED ON THE DRIVER'S LEFT.
 - THE 1/2" EXPANSION JOINT SHOWN IN THE RAILING ELEVATION IS DESIGNED FOR BRIDGE LENGTHS UP TO 80 FEET, ANY LONGER SPANS WILL HAVE TO BE MODIFIED TO ACCOUNT FOR THEIR MOVEMENT.
 - FOR RADII LESS THAN 950 FEET, HSS8x4 TUBES SHALL BE SHOP BENT TO FIT THE APPLICABLE CURVE.
 - THE MINIMUM DISTANCE FROM THE LAST POST TO THE END OF SLAB IS 1'-6".
 - FERRULES SHALL BE 12L14 COLD DRAWN CARBON STEEL.
 - HOLES IN RAIL FOR RAIL TUBE ATTACHMENT WILL BE SHOP DRILLED. HOLES SHALL BE COATED WITH AN APPROVED ZINC-RICH PAINT PRIOR TO INSTALLATION.
 - THIS RAILING MEETS THE REQUIREMENTS FOR A TL-2 SERVICE LEVEL.

ITEM #: 525.44

STRUCTURAL STEEL TO COMPLY W/ ASTM A6
GALVANIZING TO BE PER ASTM A123, UNLESS OTHERWISE SPECIFIED.
TOLERANCE UNLESS OTHERWISE NOTED:
HOLES - ± 1/32"
FRACTIONS - ± 1/16"
ANGLES - ± 1/2"

SHEET 1 OF 2

BRIDGE RAIL DETAILS SHEET

ROUTE NO: TOWN HIGHWAY 22, CLASS 3 (CAMELS HUMP ROAD) BRIDGE NO : 30 - EAST SIDE
TOWN OF HUNTINGTON, COUNTY OF CHITTENDEN, VERMONT

R NO.	DATE	DESCRIPTION	BY	R NO.	DATE	DESCRIPTION	BY
1	7/19/16	SEPERATE DRAWINGS FOR EAST & WEST	E.P.				

ELDERLEE, INC.
OAKS CORNERS, NEW YORK 14618
email: dlong@elderlee.com / epeek@elderlee.com
Tel: 315-789-6670 Fax: 315-789-6615

ASME CERTIFIED FABRICATOR
ORTHOGONAL PROJECTION

DRAWN	D.K.	2/23/16
CHECKED	E.P.	2/24/16
APPROVED	D.L.	2/24/16
SCALE	SCHEMATIC	

DRAWING NO. FR LAFAYETTE-HUNTINGTON - E