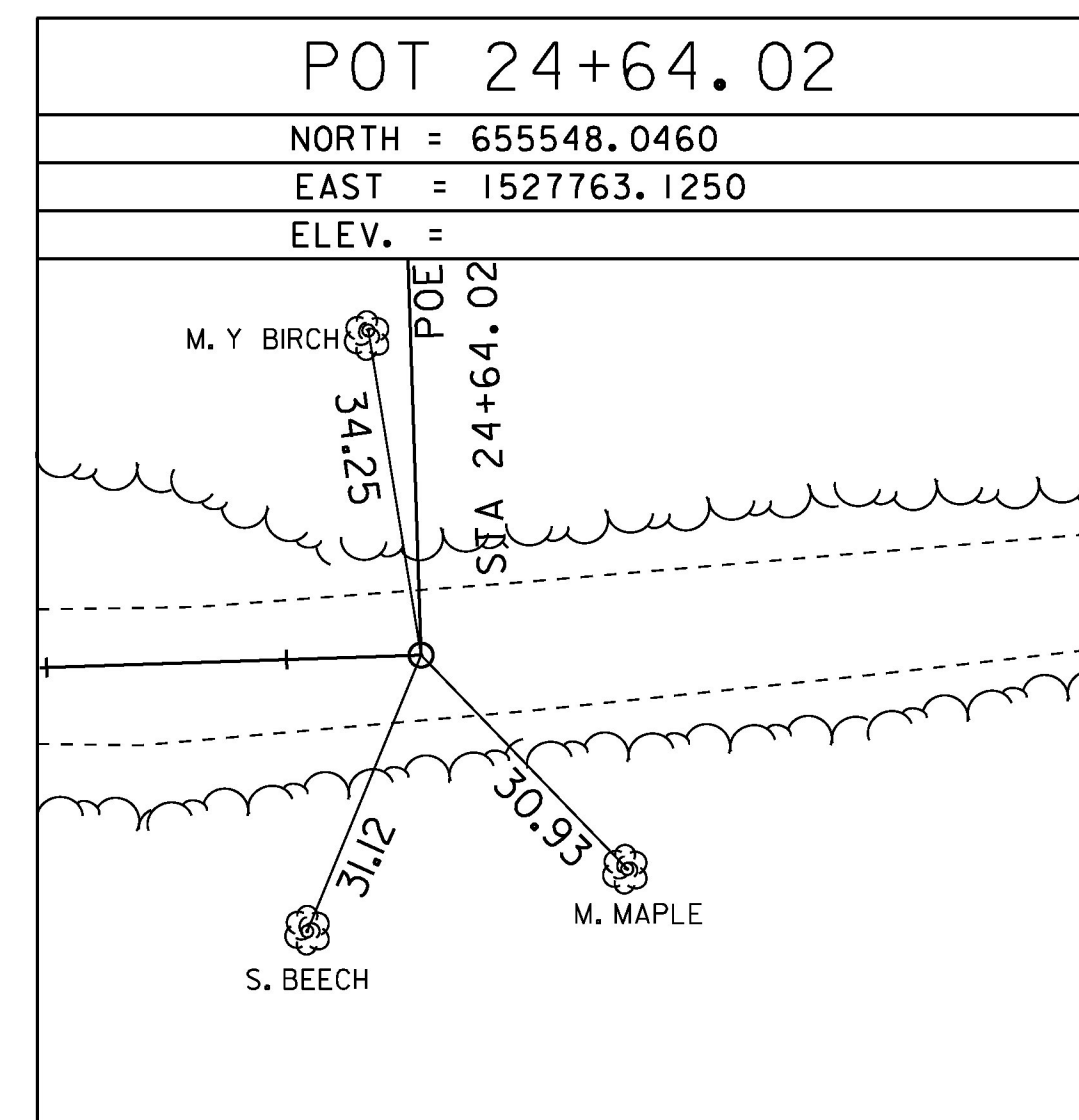


ALIGNMENT TIES



TH 22

STATION	NORTHING	EASTING
POB 20+00.00	655330.5699	1527379.6375
PC 20+80.52	655361.5795	1527453.9488
PI 21+38.77	655384.0117	1527507.7055
Radius:	200.00	
Delta:	32°28'33.86" Left	
Degree of Curvature (Arc):	28°38'52.40"	
Length:	113.36	
Tangent:	58.25	
Chord:	111.85	
Middle Ordinate:	7.98	
External:	8.31	
PT 21+93.88	655431.8004	1527541.0106
PC 22+59.60	655485.7104	1527578.5817
PC 22+59.60	655485.7104	1527578.5817
PI 23+29.75	655543.2686	1527618.6953
Radius:	140.00	
Delta:	53°13'59.19" Right	
Degree of Curvature (Arc):	40°55'32.00"	
Length:	130.07	
Tangent:	70.16	
Chord:	125.44	
Middle Ordinate:	14.84	
External:	16.60	
PT 23+89.67	655545.5866	1527688.8144
POE 24+64.02	655548.0431	1527763.1262

DATUM	
VERTICAL	NAVD 88
HORIZONTAL	NAD 83 (92)
ADJUSTMENT	COMPASS

PROJECT NAME:	HUNTINGTON
PROJECT NUMBER:	BRO 1445(35)
FILE NAME: sl2j162+1e.dgn	PLOT DATE: 15-OCT-2015
PROJECT LEADER: C. CARLSON	DRAWN BY: C. CYR
DESIGNED BY: D. PETERSON	CHECKED BY: P. BEYOR
TIE SHEET 2	SHEET 10 OF 44