

GPS CONTROL POINTS

THUMPER

NORTH = 655889.449
 EAST = 1517698.644
 ELEV. =

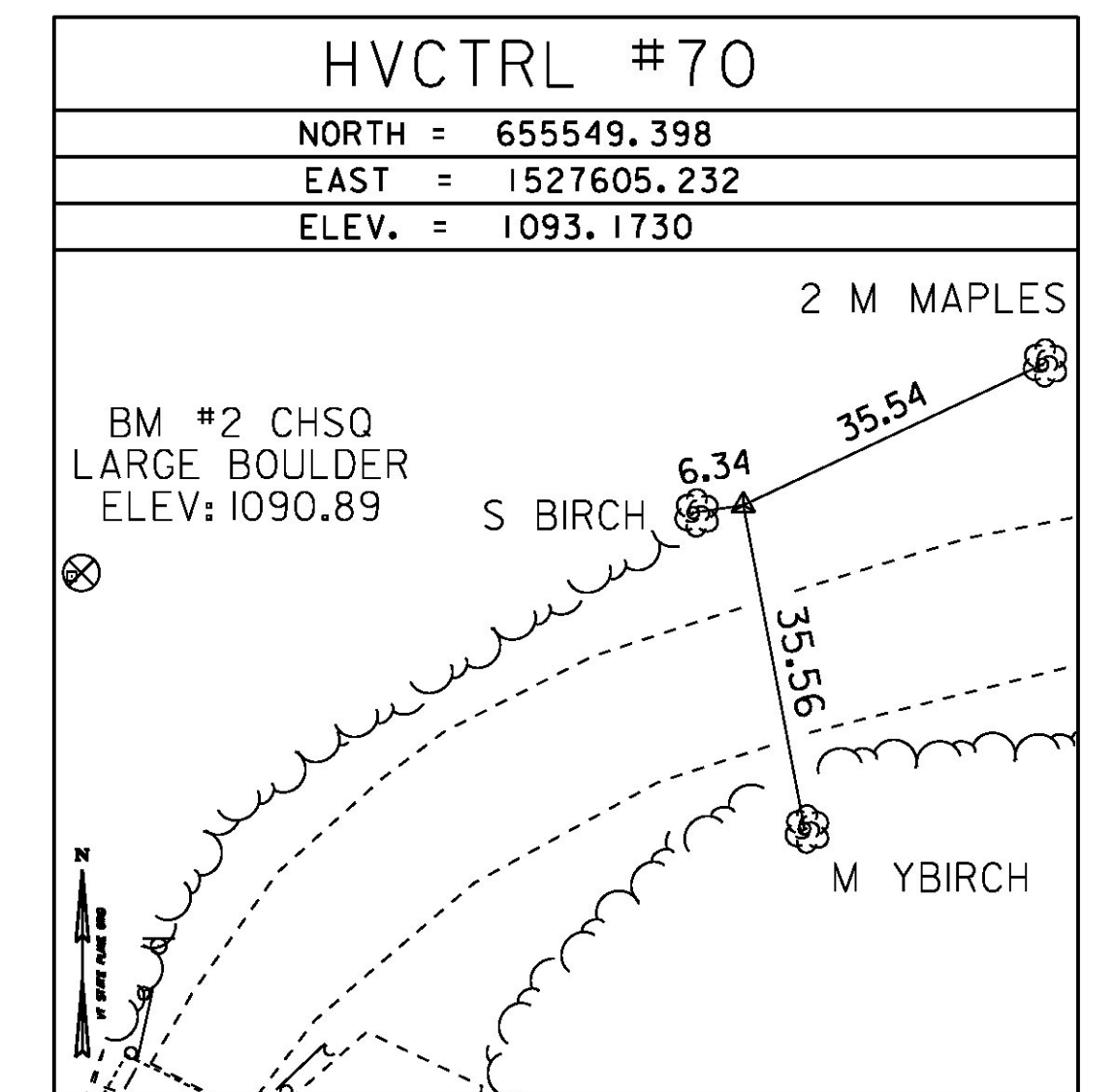
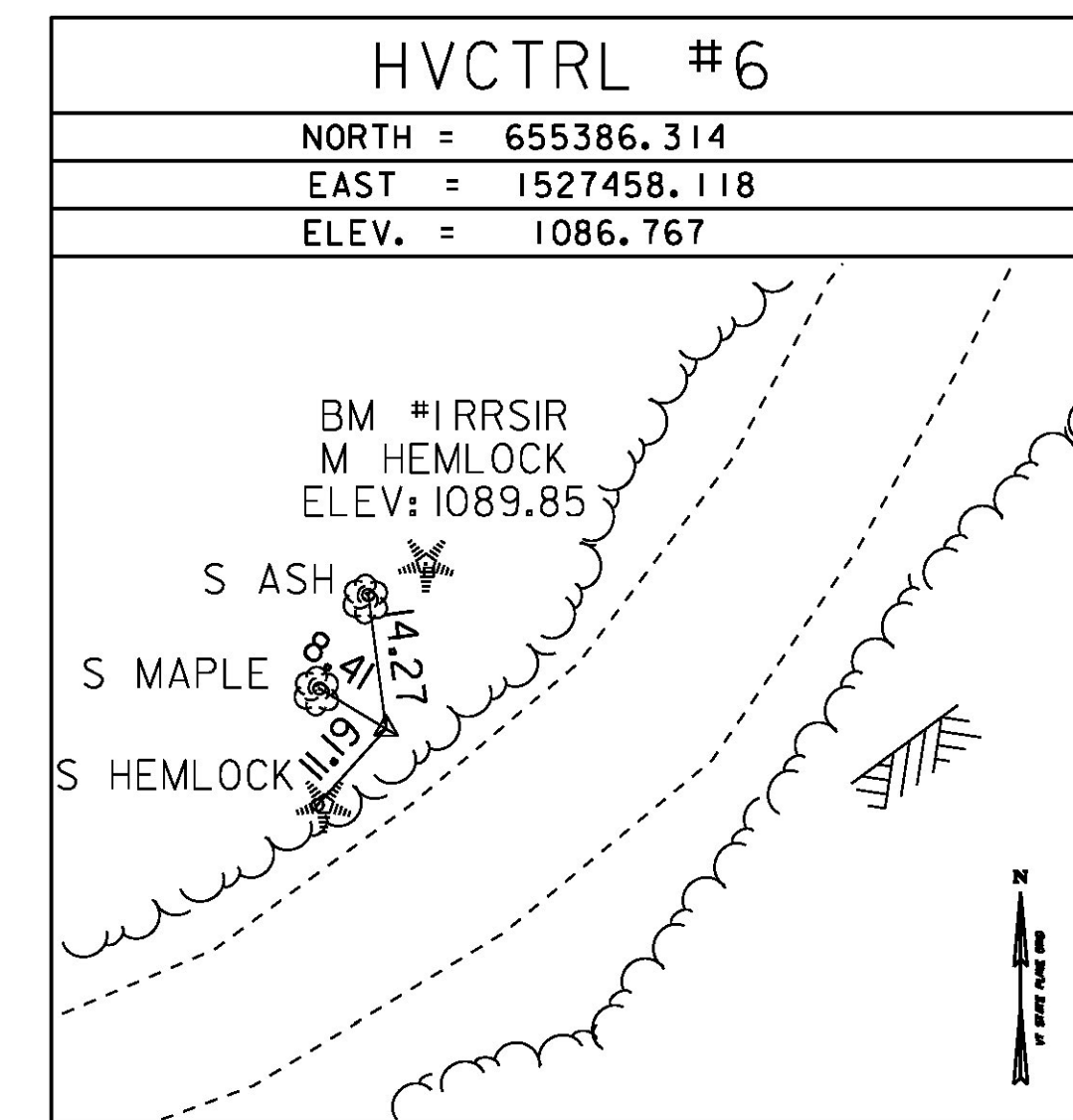
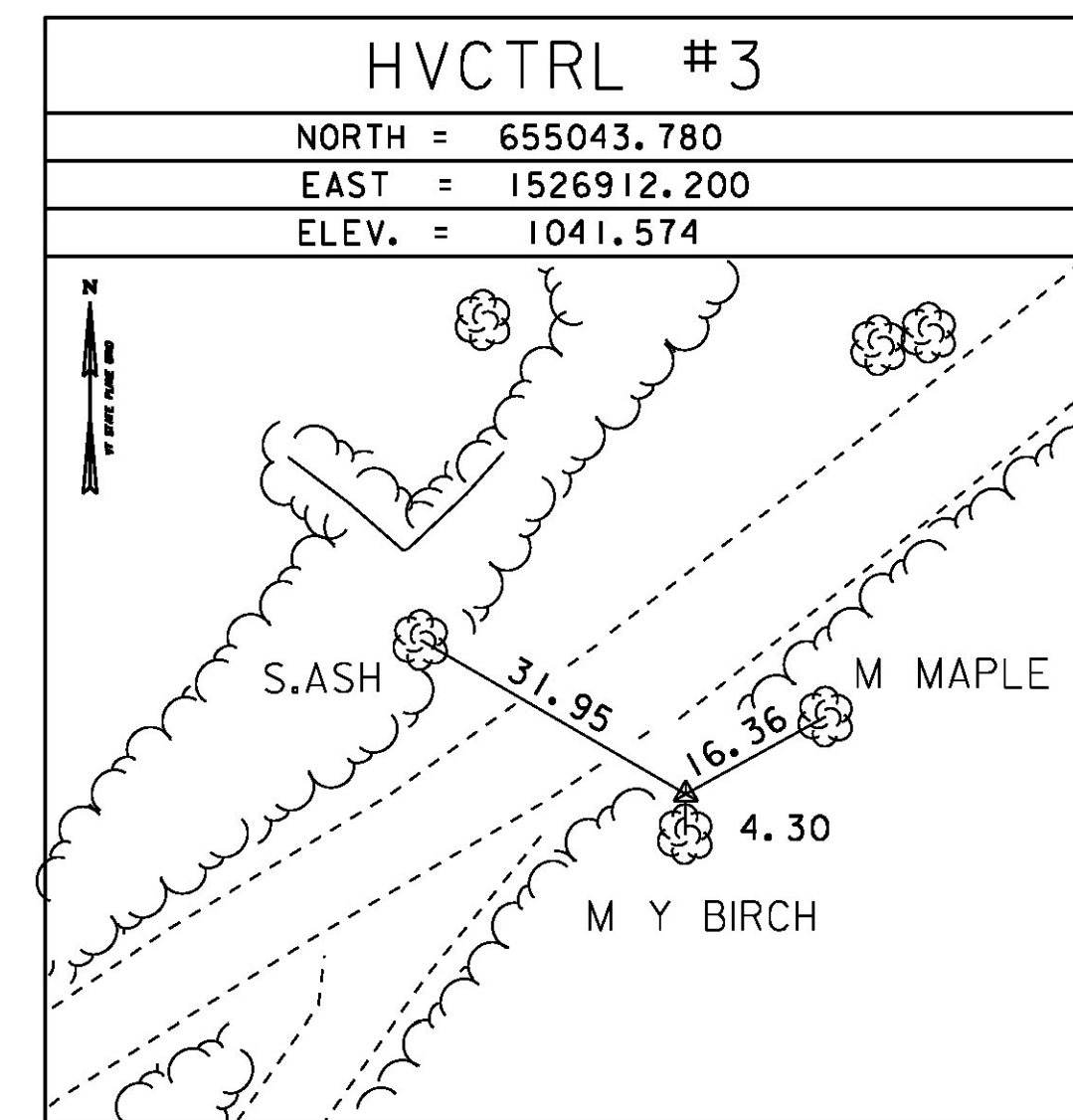
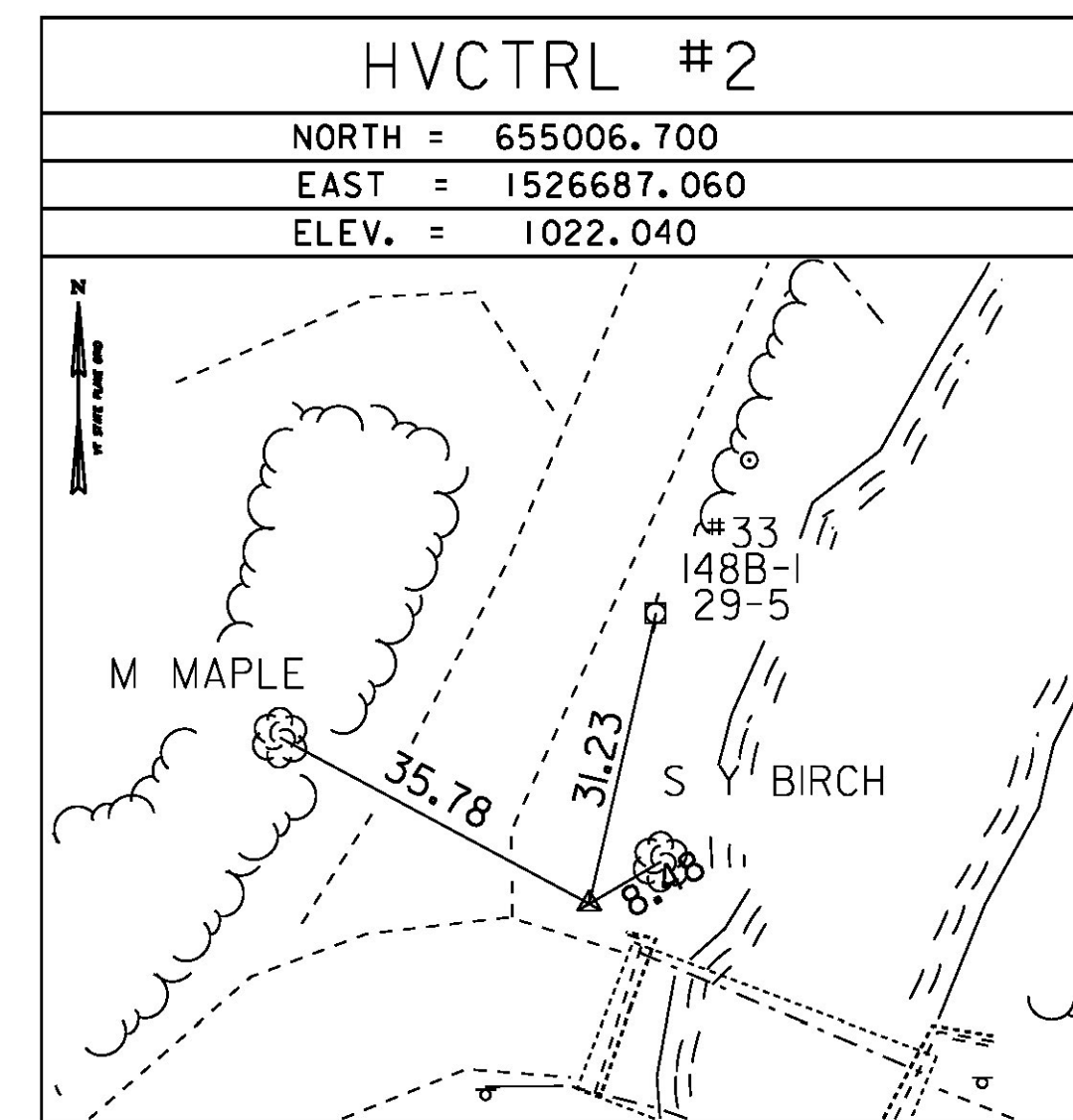
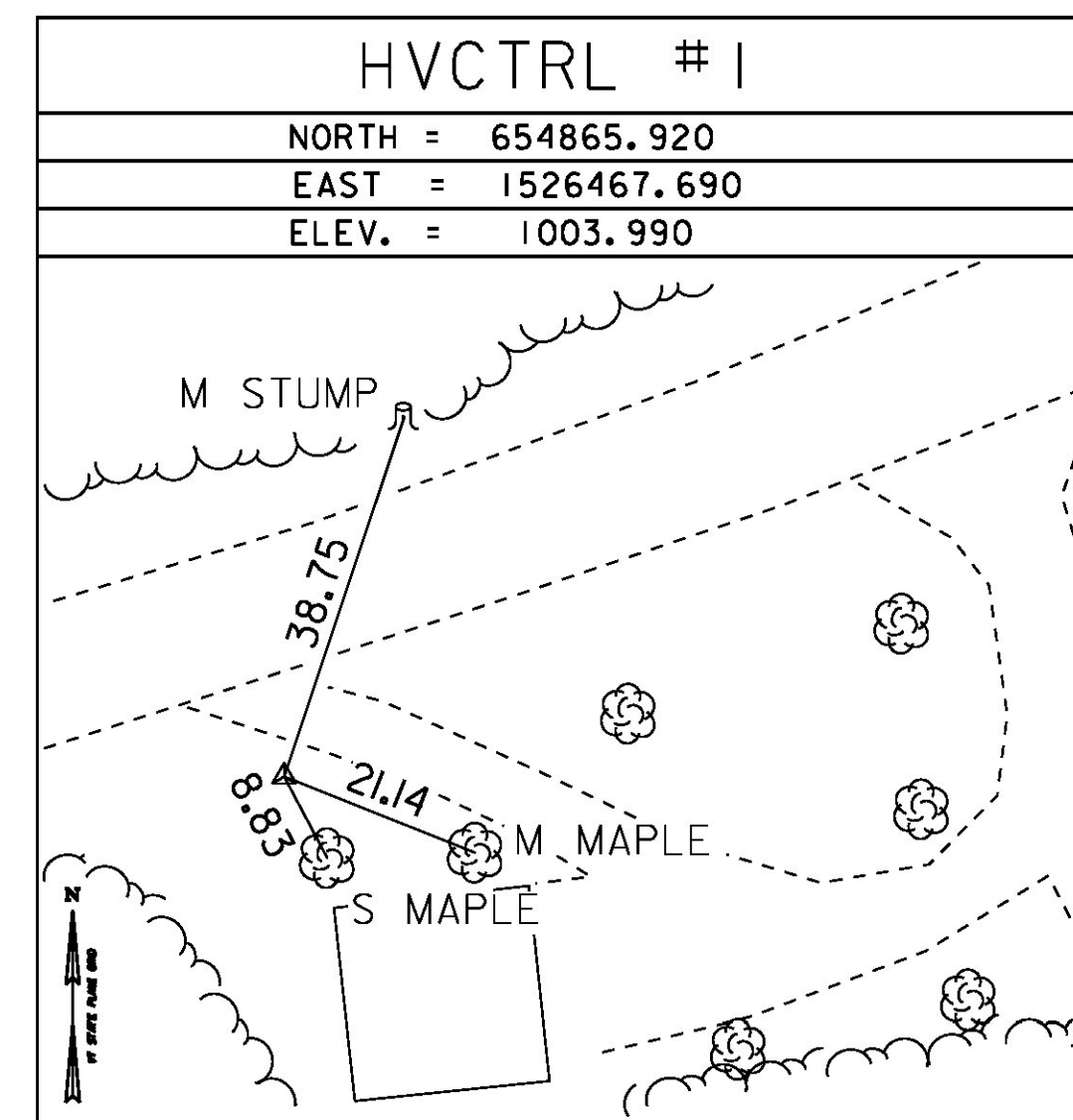
GENERAL LOCATION - THE STATION IS LOCATED IN HUNTINGTON CENTER, VT, 2.1 MI (3.4 KM) SOUTH OF HUNTINGTON VILLAGE, 7.4 MI (11.9 KM) SOUTH OF RICHMOND, AND 10.8 MI (17.4 KM) WEST OF WATERBURY. TO REACH FROM THE JUNCTION OF THE MAIN ROAD (TH1) AND CAMELS HUMP ROAD (TH4), PROCEED NORTHWESTERLY ALONG TH1 FOR 0.1 MI (0.2 KM) TO A BRIDGE OVER BRUSH BROOK AND THE MARK SET IN THE SOUTHEAST CORNER OF THE BRIDGE. ALSO 2.45 MI (3.94 KM) SOUTHEASTERLY ALONG TH1 FROM ITS INTERSECTION WITH EAST STREET IN HUNTINGTON VILLAGE TO THE MARK ON THE LEFT. IT IS LOCATED 64 FT (19.5 M) NORTHEAST OF POLE 86/122, 17 FT (5.2 M) EAST OF THE CENTERLINE OF TH1, AND 1.5 FT (0.5 M) EAST OF A STEEL GUARDRAIL. OWNERSHIP IS THE TOWN OF HUNTINGTON.

BAMBI

NORTH = 657332.336
 EAST = 1515932.398
 ELEV. =

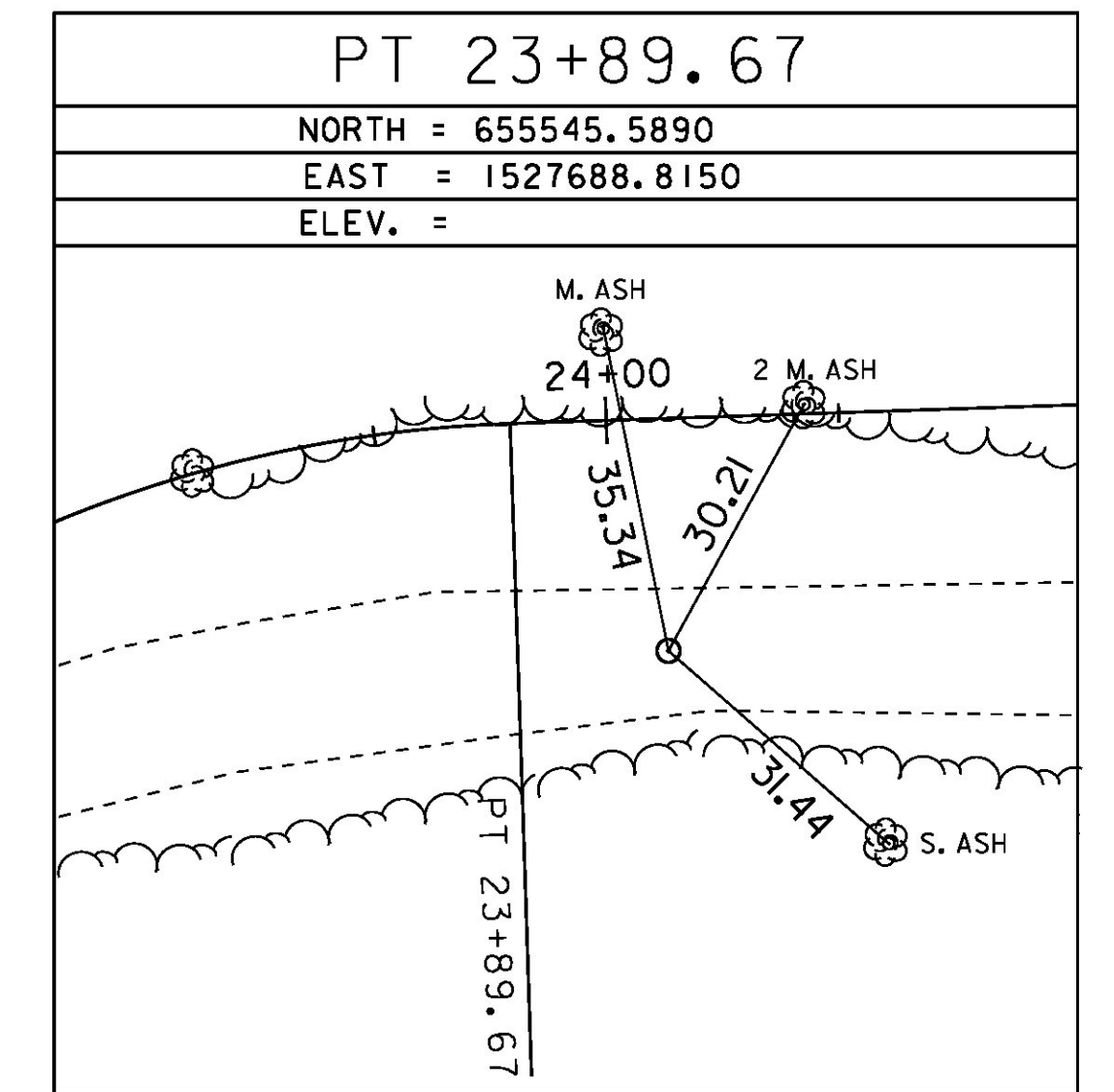
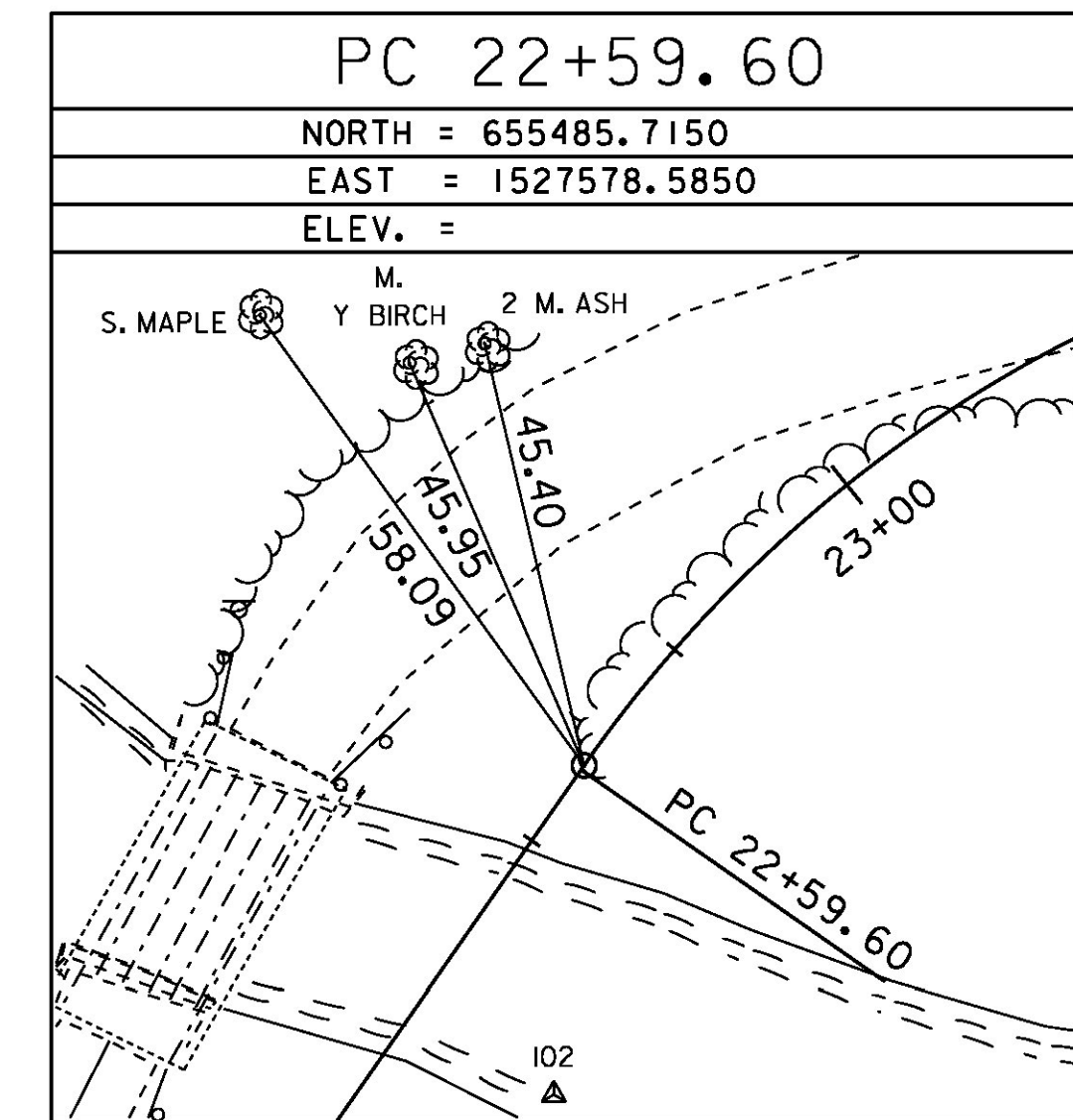
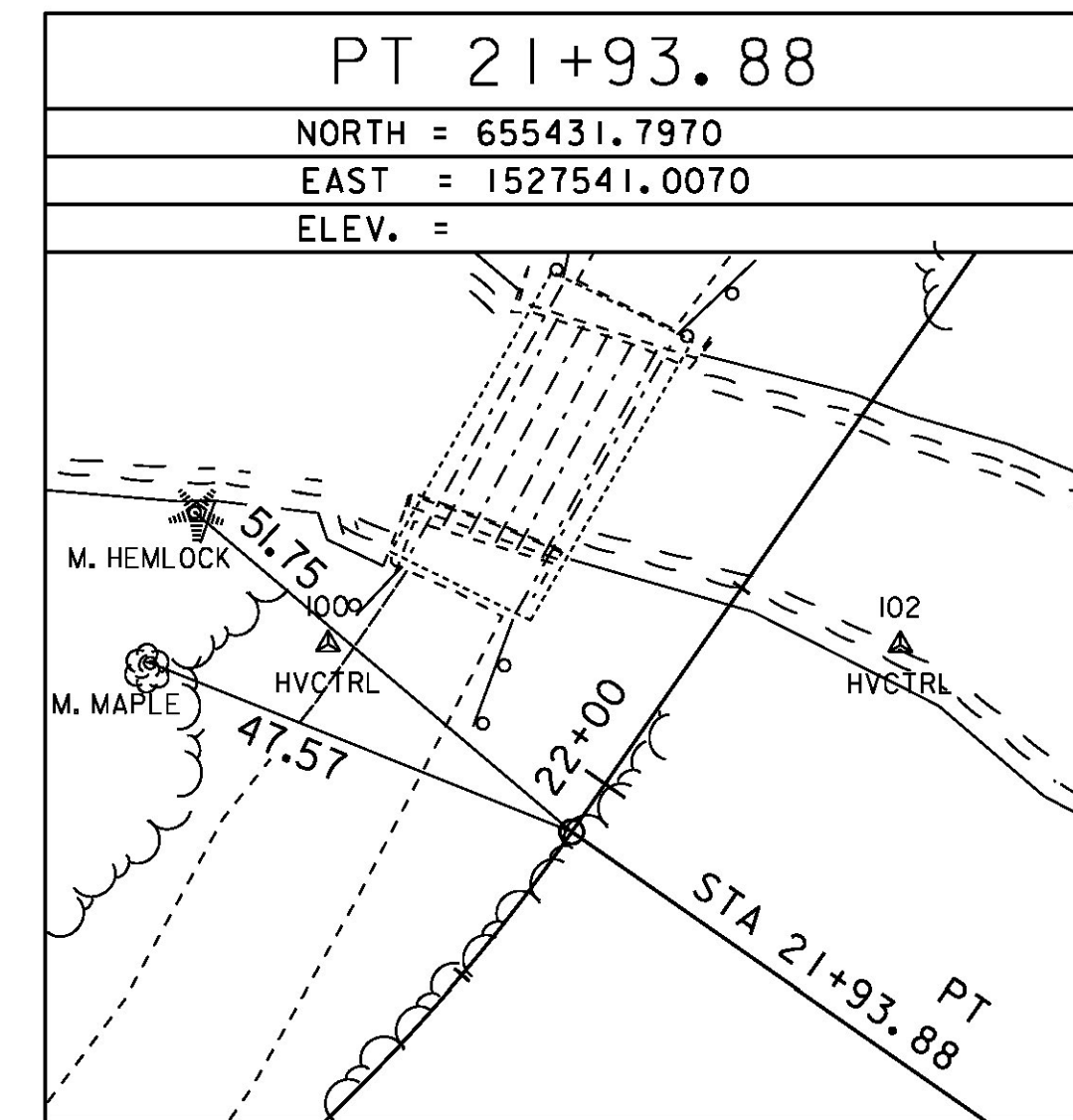
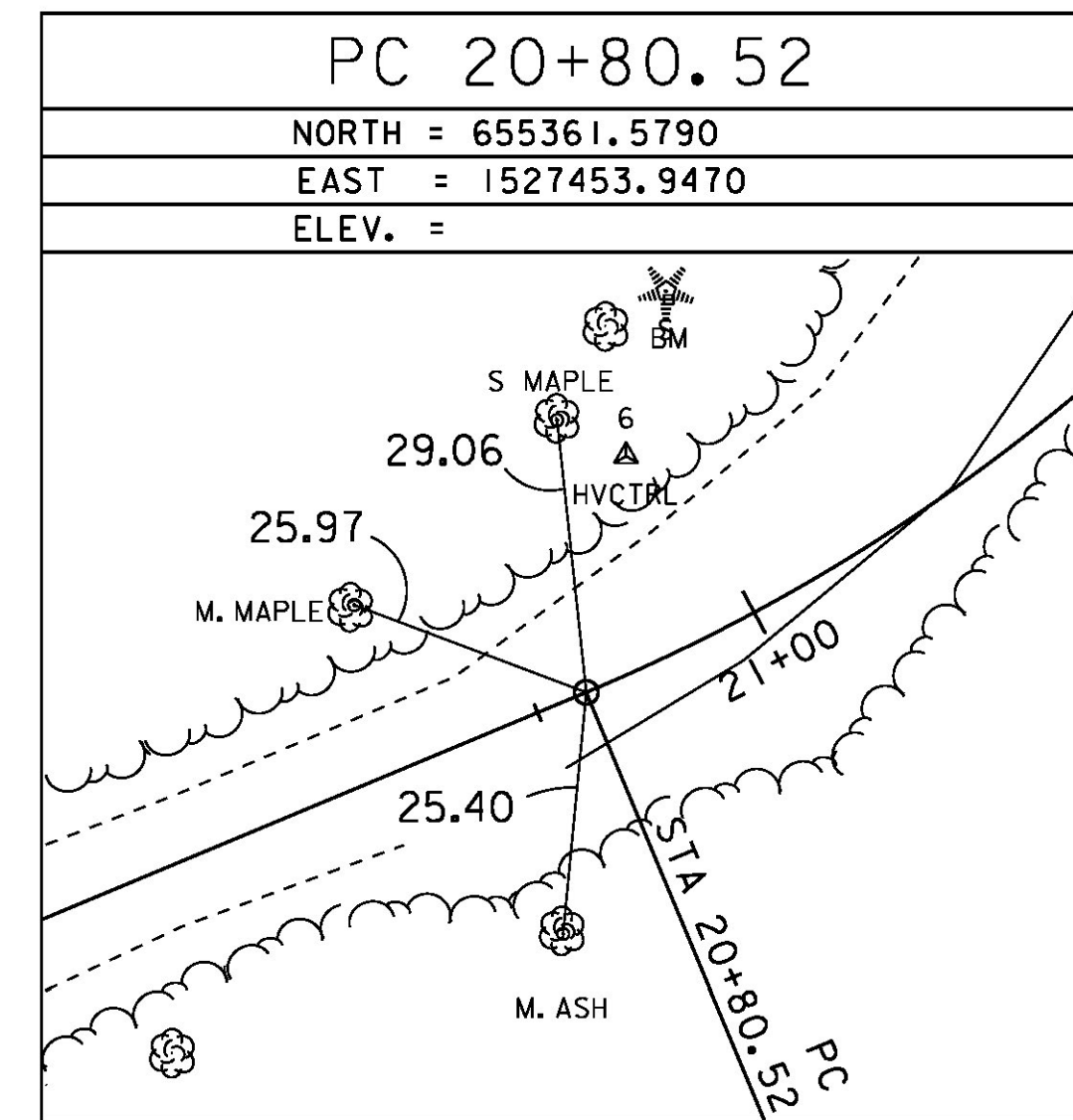
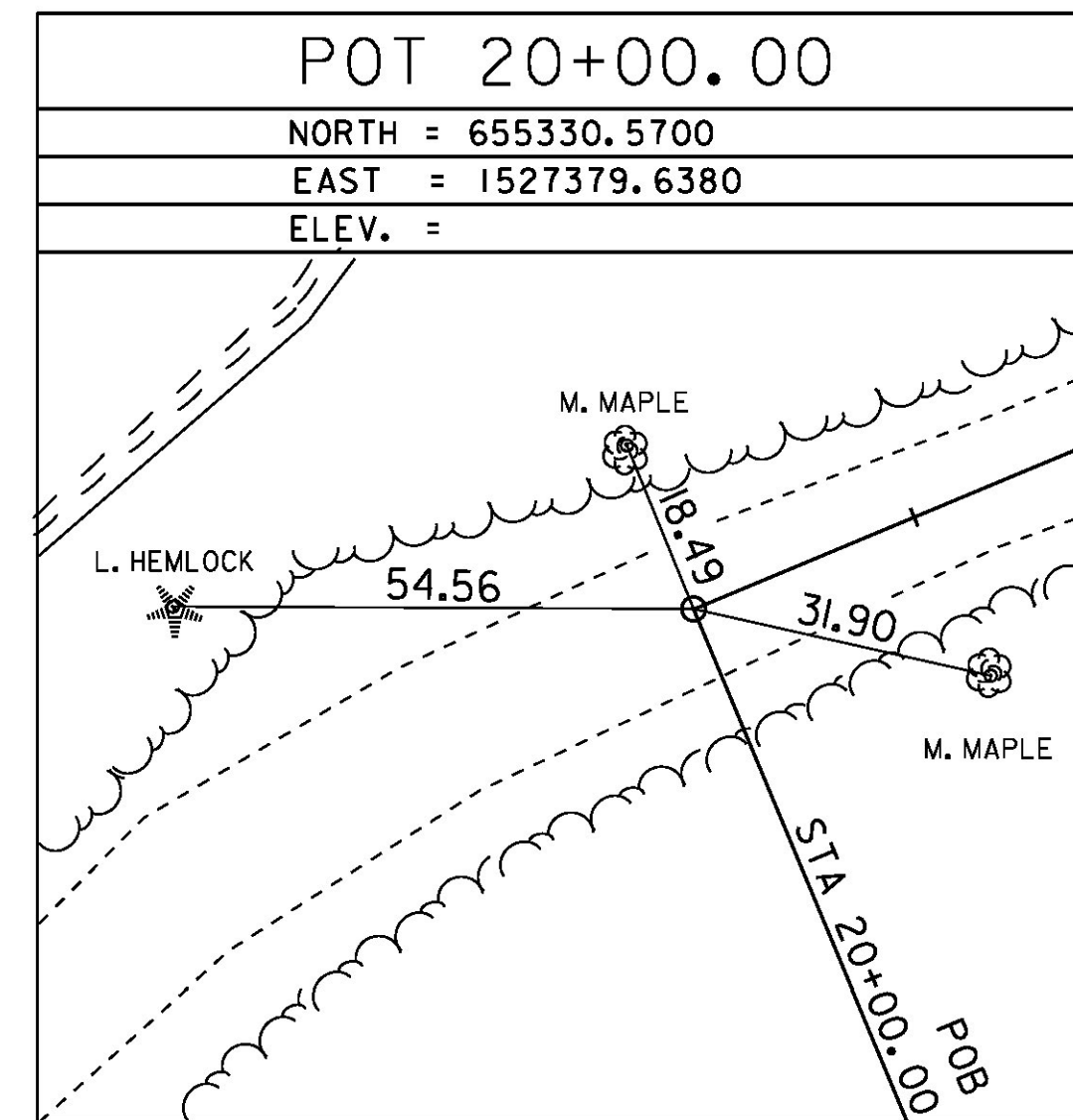
GENERAL LOCATION - THE STATION IS LOCATED IN HUNTINGTON CENTER, VT, 1.7 MI (2.7 KM) SOUTH OF HUNTINGTON VILLAGE, 7.1 MI (11.4 KM) SOUTH OF RICHMOND, AND 11 MI (17.7 KM) WEST OF WATERBURY. TO REACH FROM THE JUNCTION OF THE MAIN ROAD (TH1) AND CAMELS HUMP ROAD (TH4), PROCEED 0.6 MI (1.0 KM) TO A BRIDGE OVER THE HUNTINGTON RIVER AND THE MARK ON THE RIGHT. THE MARK IS A STATE OF VERMONT DISK SET IN THE NORTHEAST BRIDGE ABUTMENT. ALSO 2.45 MI (3.94 KM) SOUTHEASTERLY ALONG TH1 FROM ITS INTERSECTION WITH EAST STREET IN IT IS LOCATED 15.5 FT (4.7 M) NORTH OF THE CENTERLINE OF TH1 AND 2 FT (0.6 M) NORTH OF A BOX BEAM GUARDRAIL. OWNERSHIP TOWN OF HUNTINGTON.

TRAVERSE TIES



* MAIN TRAVERSE COMPLETED 12/22/1993 BY R. GILMAN [93J030] SECONDARY TRAVERSE COMPLETED 3/20/2012 BY R. GILMAN P.C. & P. WINTERS

ALIGNMENT TIES



DATUM	
VERTICAL	NAVD 88
HORIZONTAL	NAD 83 (92)
ADJUSTMENT	COMPASS

PROJECT NAME:	HUNTINGTON
PROJECT NUMBER:	BRO 1445(35)
FILE NAME:	si2j162+1e.dgn
PROJECT LEADER:	C. CARLSON
DESIGNED BY:	D. PETERSON
TIE SHEET	1
PLOT DATE:	15-OCT-2015
DRAWN BY:	C. CYR
CHECKED BY:	P. BEYOR
SHEET	9 OF 44