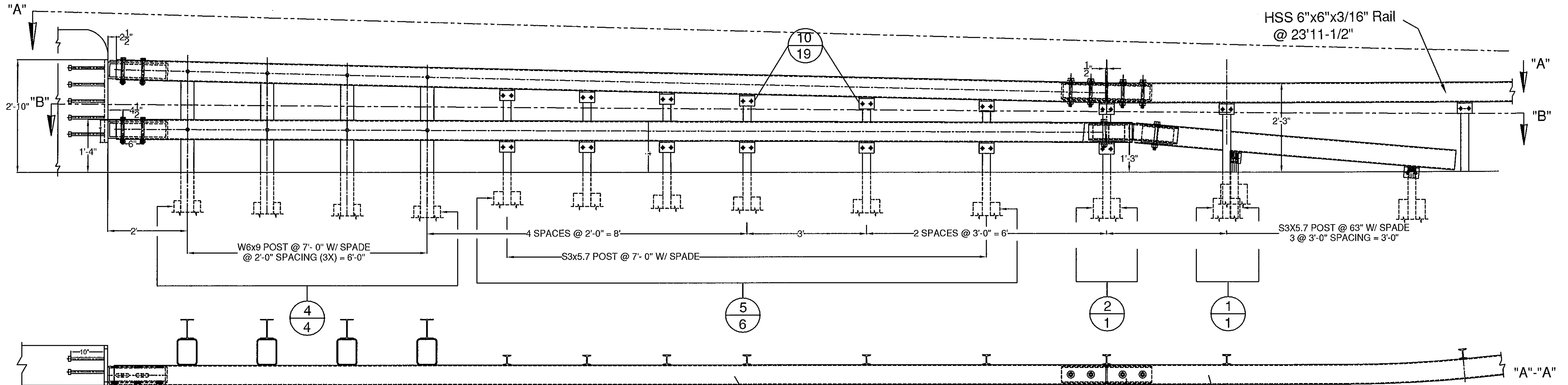
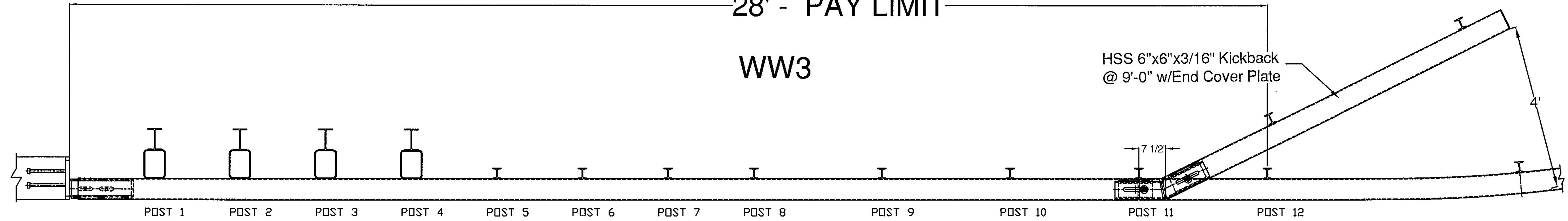


28' - PAY LIMIT

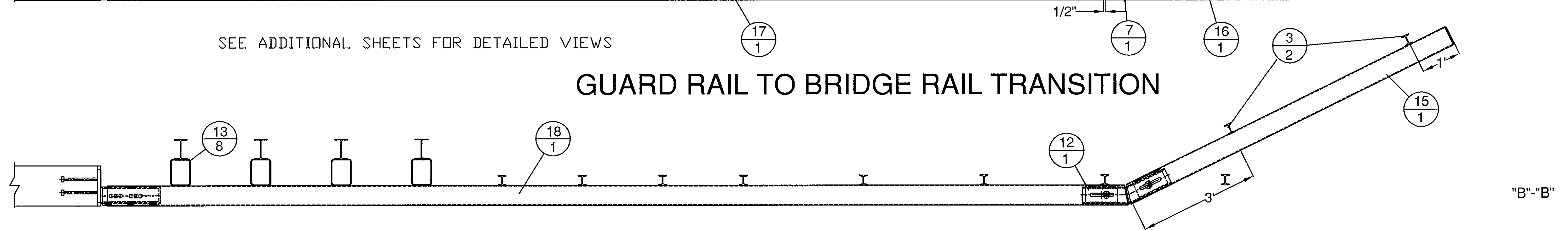
WW3

HSS 6"x6"x3/16" Kickback
@ 9'-0" w/End Cover Plate



SEE ADDITIONAL SHEETS FOR DETAILED VIEWS

GUARD RAIL TO BRIDGE RAIL TRANSITION



GENERAL NOTES:

- 1) ALL RAILING IS TO BE FABRICATED AND ERECTED ACCORDING TO SECTION 525 OF THE STANDARD SPECIFICATIONS.
- 2) BOLTS SHALL BE TORQUED SNUG TIGHT (APPROXIMATELY 100 FT-LB).
- 3) PROTRUSIONS CAUSED BY WELDING OR GALVANIZING ARE NOT PERMITTED ON THE ADJOINING SURFACES OF THE BOX BEAM RAILS, SPLICE TUBES AND FILL PLATES.
- 4) ANY BENDING OF RAIL SHALL BE DONE AT THE FABRICATION PLANT. RADII GREATER THAN 16' TO BE CURVED ON A TUBE BENDING MACHINE, RADII LESS THAN 16' TO BE "PIE CUT" AND WELDED. CURVED RAILING WILL HAVE AN 18" LENGTH ON EACH END STRAIGHT TO ACCOMADATE SPLICES. "PIE CUTS ARE LOCATED SO AS TO NOT CONFLICT WITH POST FASTENING HOLES. PIE CUTS WILL BE WELDED ACCORDING TO PROCEDURE WPS-3026.

Vermont Agency of Transportation

RECEIVED

CK'D BY SC, RF OK'D BY G. Laroche

April 8, 2016

RESUBMIT No Approved
BY K. Higgins DATE 04/11/2016

900.620 SPECIAL PROVISION (GUARDRAIL)
ITEM #: APPROACH SECTION TO CONCRETE BRIDGE RAIL

SHEET 5 OF 12

STRUCTURAL STEEL TO
COMPLY W/ ASTM A6

TOLERANCE UNLESS
OTHERWISE NOTED:
FRACTIONS = ± 1/16"
ANGLES = ± 1/2"
DIAMETERS = ± 1/32"

SPECIAL PROVISION, GRAS - CONCRETE COMBINATION BR.

ROUTE NO. T.H. 3 (CLASS 2), RURAL COLLECTOR, BRIDGE # 11
TOWN OF CLARENDON, RUTLAND COUNTY, VT.

R NO.	DATE	DESCRIPTION	BY	R NO.	DATE	DESCRIPTION	BY
E 1	3/10/16	REVISED PER 2/23/16 MARK-UP	E.P. E				
V 2	4/8/16	REVISED PER 3/22/16 MARK-UP	E.P. V				

DRAWN	E.P.	01/29/16
CHECKED	D.L.	
APPROVED	M.V.	
SCALE	SCHMATIC	
DRAWING NO.	FRL - CLARENDON - T	

ELDERLEE, INC.
OAKS CORNERS, NEW YORK 14578
email: dlong@elderlee.com / epeek@elderlee.com
Tel: 315-789-6670 Fax: 315-789-6615

