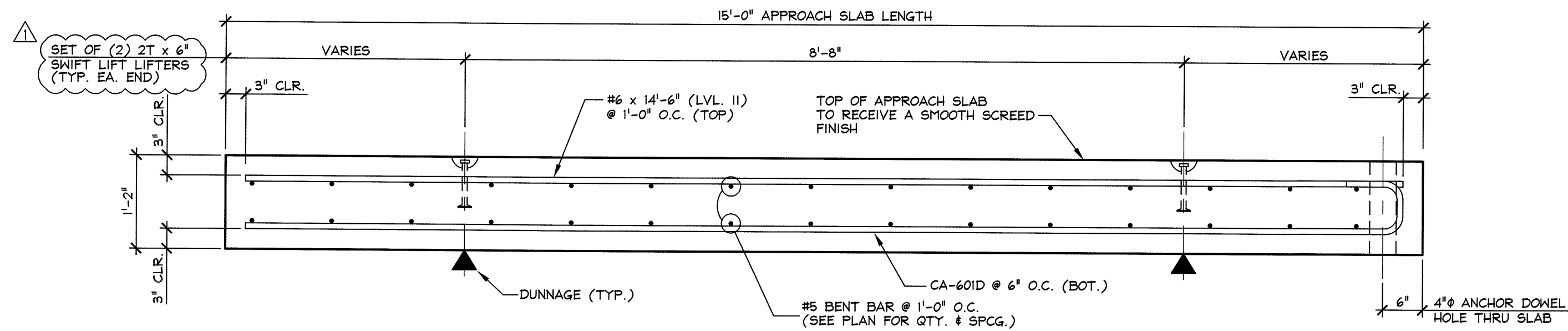
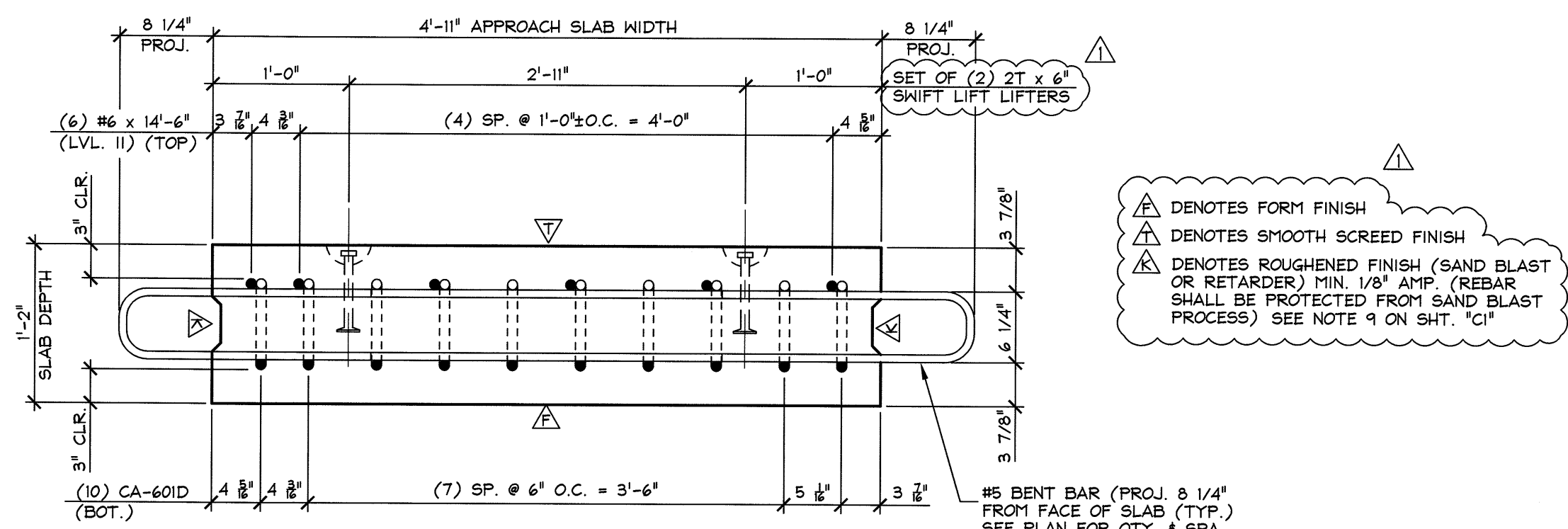


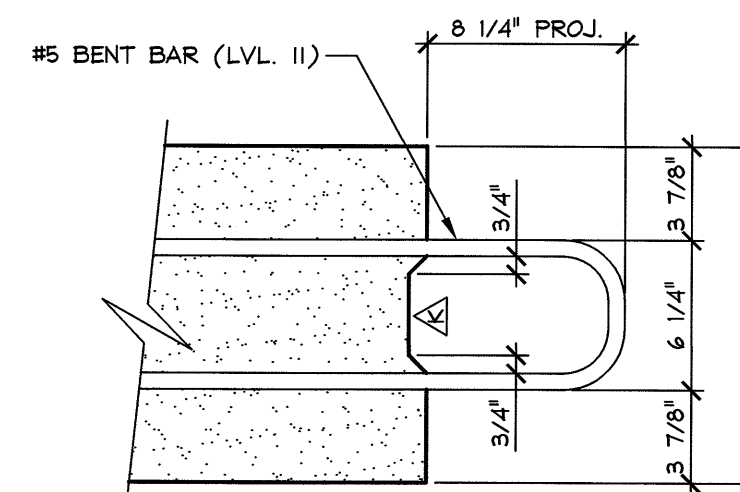
1 PLAN VIEW IN FORM  
AS2 1/2" = 1'-0"



A LONGITUDINAL SECTION  
AS2 3/4" = 1'-0"



B SECTION  
AS2 1" = 1'-0"



SHEAR KEY DETAIL  
1 1/2" = 1'-0"

SHOP NOTE:  
f'c = 5,000 PSI  
f'ci = 3,000 PSI  
MIX #445MSCC

3/11/16 REVISED AS PER ENGINEERS CONFM. T.D.

MARK: C-AS2	QTY.: 2	WT.: 6.45 T	VOL.: 3.19 cy
MATERIAL LIST / APPROACH SLAB			
ITEM	MARK	DESCRIPTION	QTY.
1	CA-503D	#5 BENT BAR (LEVEL II, DUAL COATED)	2
2	CA-504D	#5 BENT BAR (LEVEL II, DUAL COATED)	1
3	CA-505D	#5 BENT BAR (LEVEL II, DUAL COATED)	26
4	CA-601D	#6 BENT BAR (LEVEL II, DUAL COATED)	10
5			
6		#6 x 14'-6" (LEVEL II DUAL COATED)	6
7		#5 x 3'-0" (LEVEL II DUAL COATED)	2
8			
9			
10			
11			
12			
13			
14		DAYTON 2T x 6" SWIFT LIFT (DOMESTIC)	4
15			

3/11/16 REVISED AS PER ENGINEERS CONFM. T.D.

APPROVAL STAMP:  
Vermont Agency of Transportation  
**RECEIVED**  
CK'D BY SC, TM OK'D BY G. Laroche  
March 18, 2016  
RESUBMIT No Approved  
BY K. Higgins DATE 3/28/2016

J.P. CARRARA & SONS INC.  
Precast & Prestress Manufacturer  
2444 CASE STR., WINDLEBURY, VERMONT 05753 Phone: (802)388-6361 Fax: (802)388-9010

J.A. McDonald, Inc.  
CONTRACTOR  
LYNDON CENTER, VERMONT

STATE OF VERMONT AGENCY OF TRANSPORTATION  
COUNTY OF RUTLAND

TOWN OF CLARENDON  
WALKER MOUNTAIN ROAD, TH #3, RURAL COLLECTOR  
BRIDGE NO.: 11 PROJECT NO.: BRO 1443(4B)

DATE: JAN. 8, 2016  
SCALE: NOTED  
CHKD: DFTM: T.D.  
JOB NO: 23476-015  
DWG. NO: AS2