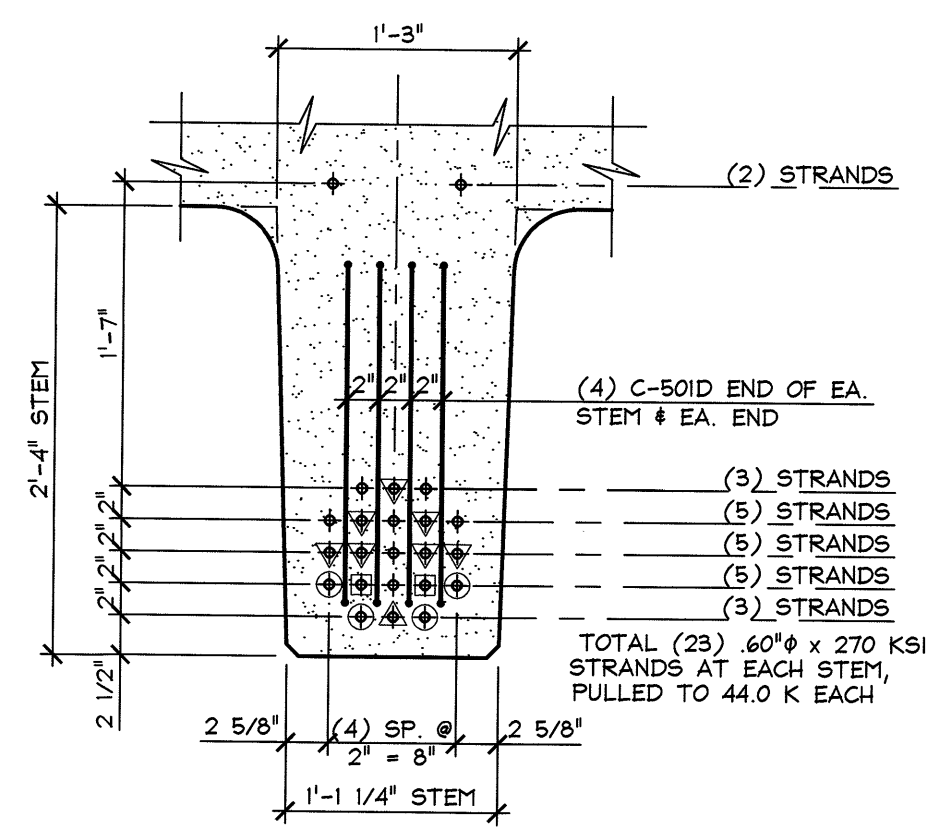
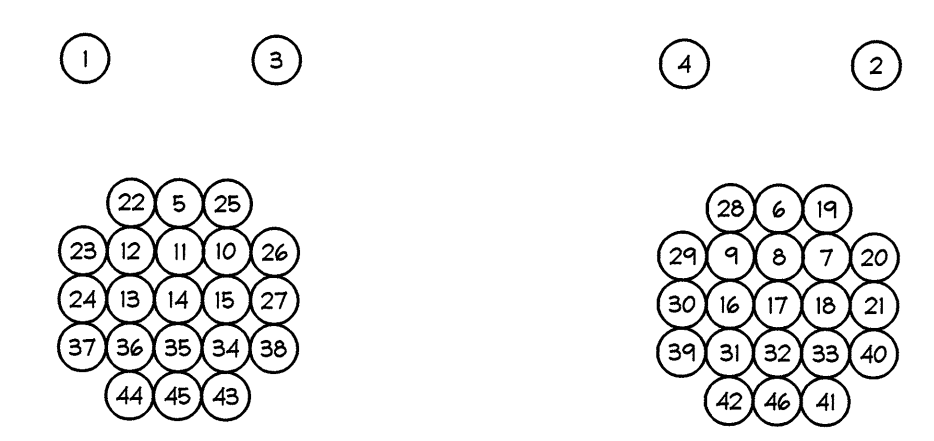


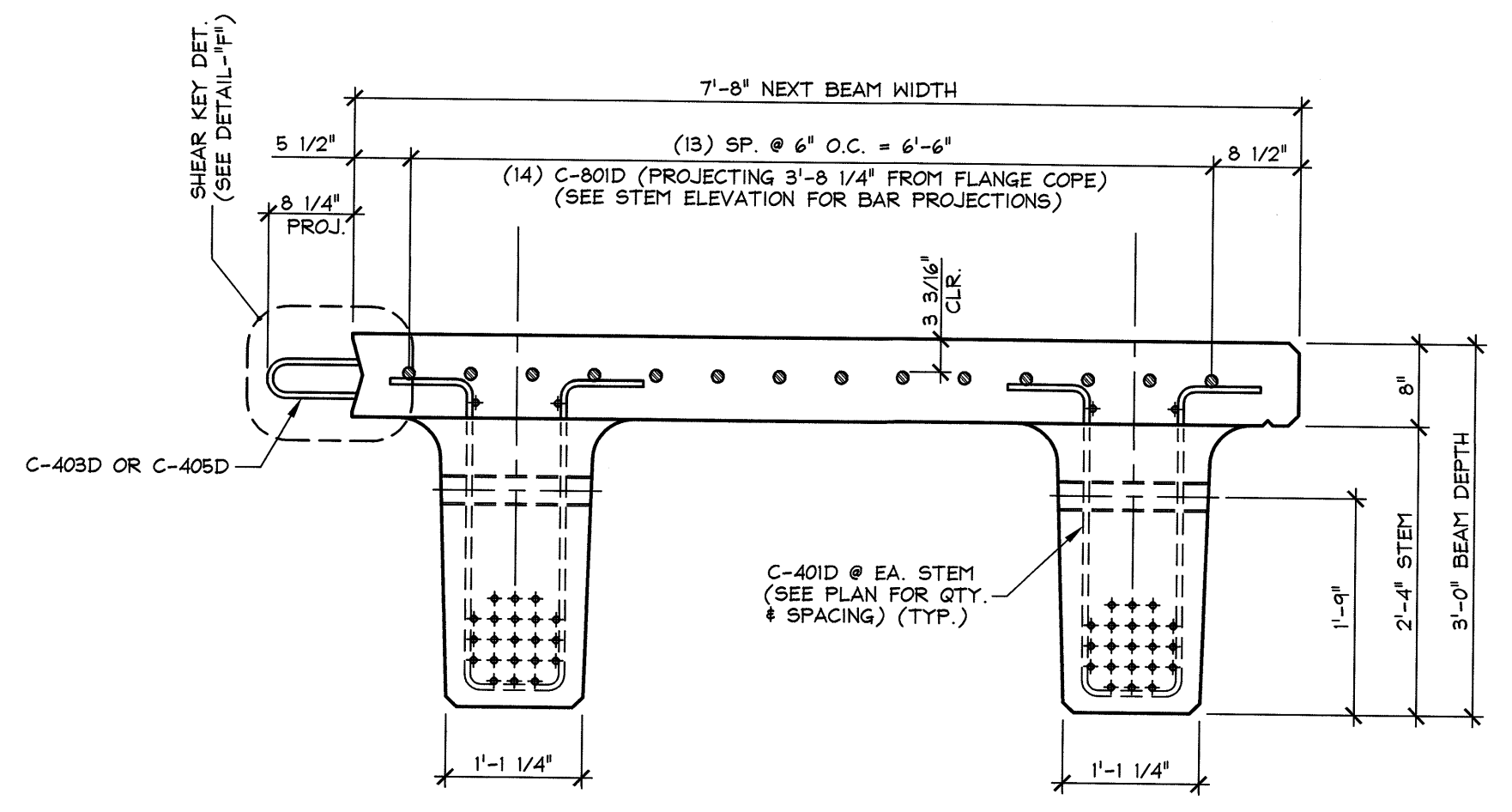
A DIMENSIONAL & REINFORCING SECTION
NB3
3/4" = 1'-0"



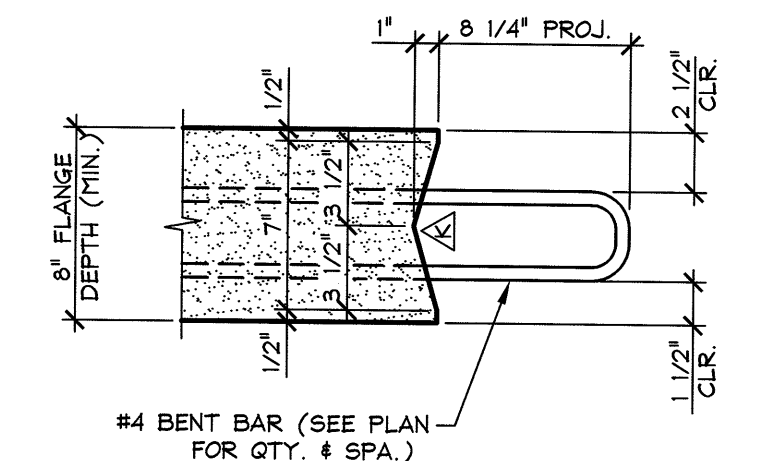
B STEM STRAND PATTERN
NB3
1" = 1'-0"



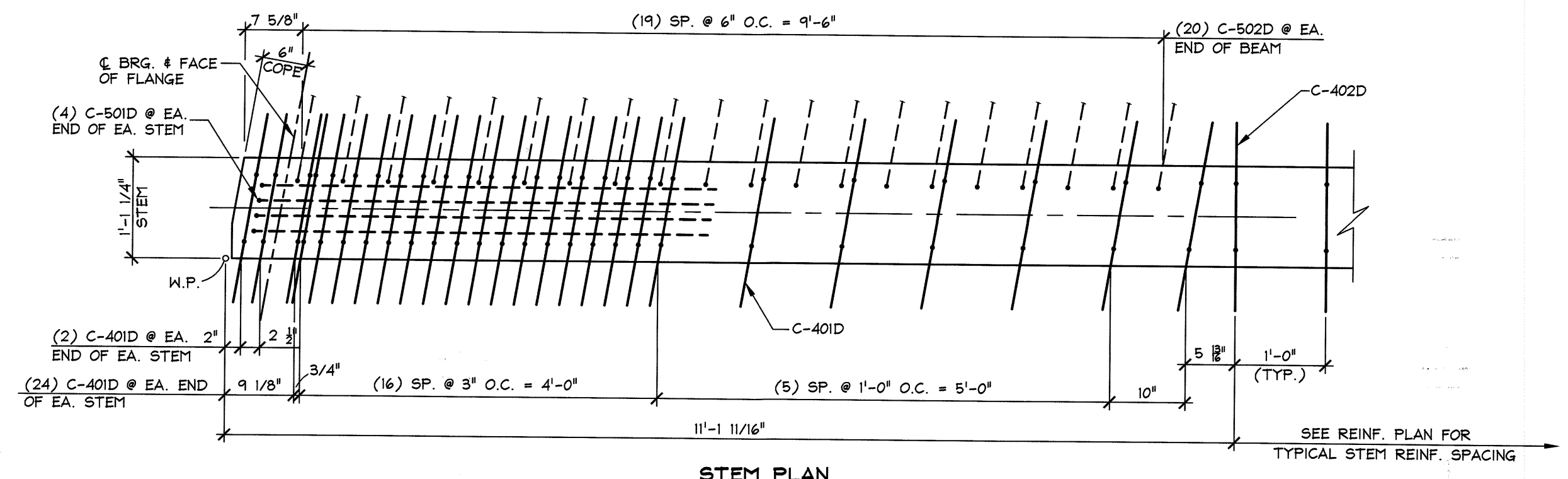
DETENSING SCHEDULE
N.T.S.



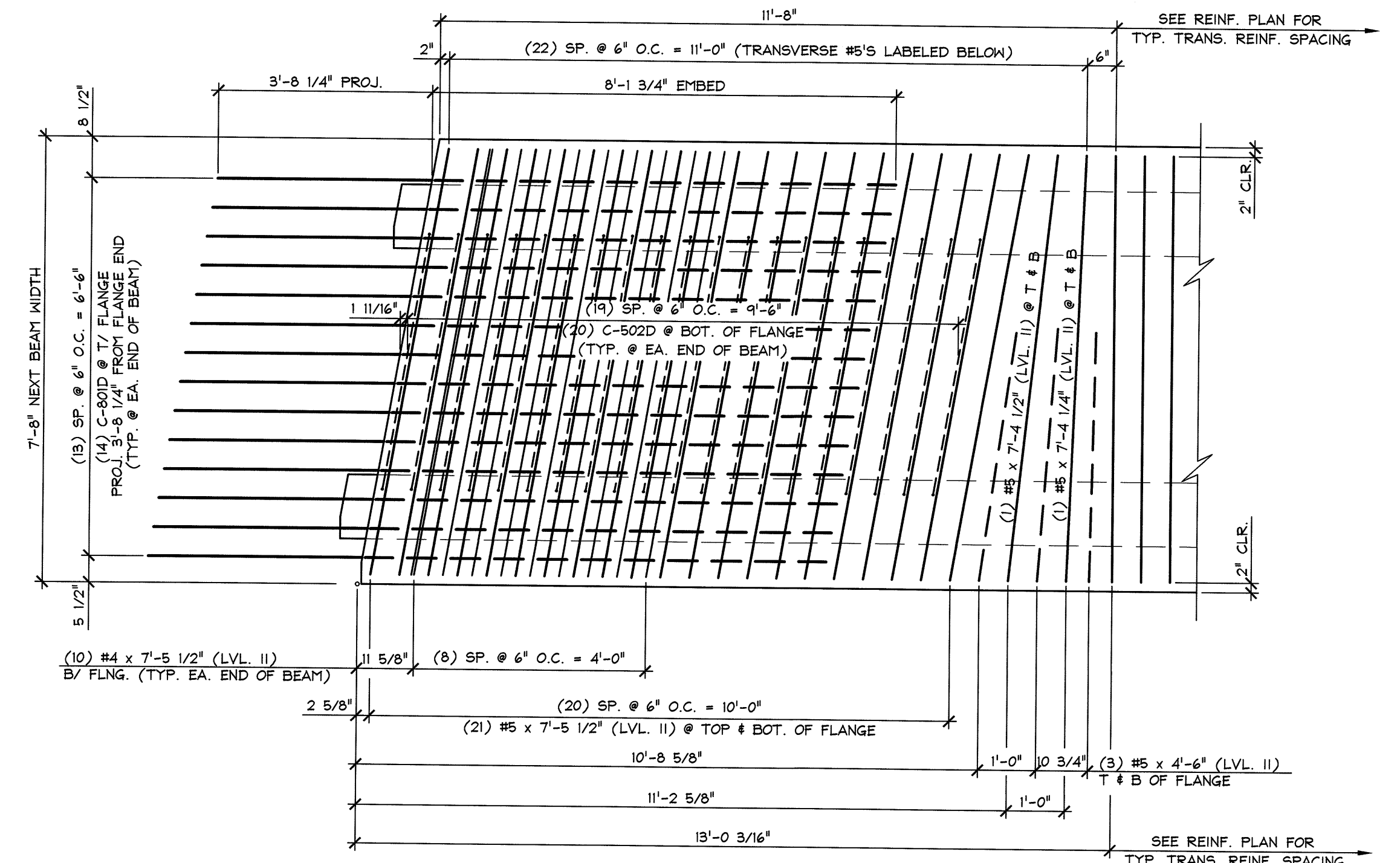
C DIMENSIONAL & REINFORCING SECTION
NB3
3/4" = 1'-0"



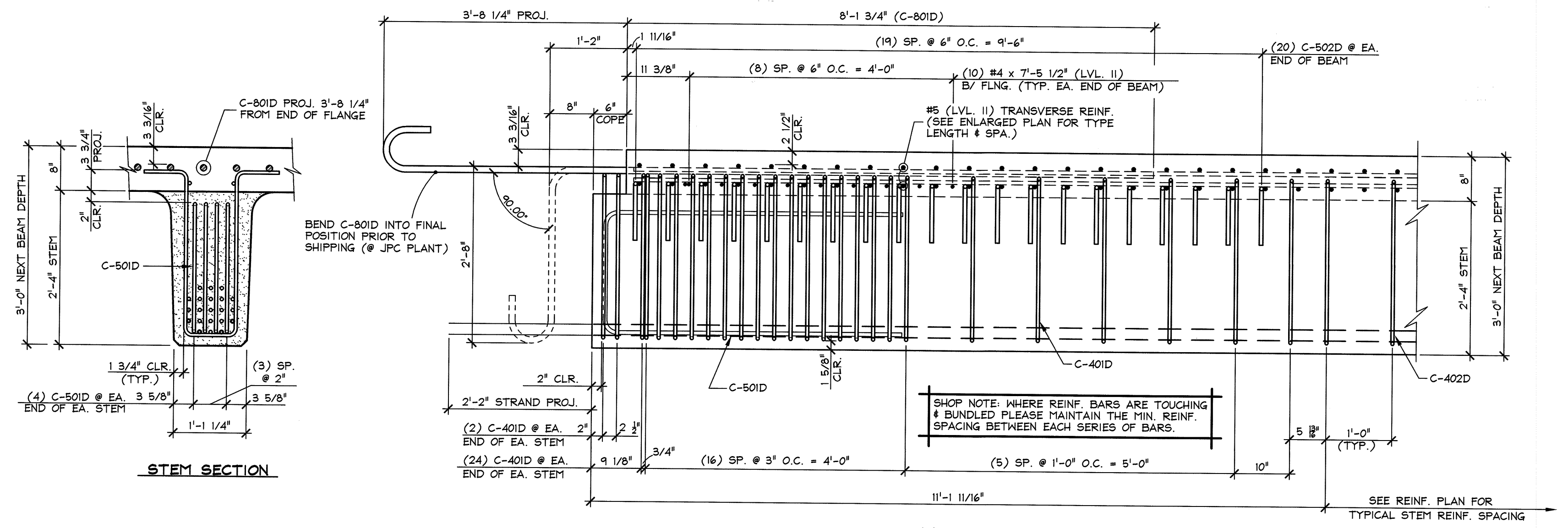
F SHEAR KEY DETAIL
NB3
1 1/2" = 1'-0"



STEM PLAN



E ENLARGED TRANSVERSE REINFORCING PLAN
NB3
LONGITUDINAL REINFORCING & STEM STIRRUPS NOT SHOWN FOR CLARITY
1/2" = 1'-0"



D END BLOCK STEM REINFORCING DETAILS
NB3
3/4" = 1'-0"

PRESTRESSING NOTATIONS

- ▼ DENOTES STRAIGHT STRANDS TO BE DEBONDED 6" FROM EA. END OF EA. STEM
- ⊕ DENOTES STRAIGHT STRANDS TO BE DEBONDED 2'-0" FROM EA. END OF EA. STEM
- ▲ DENOTES STRAIGHT STRANDS TO BE DEBONDED 4'-0" FROM EA. END OF EA. STEM
- ⊙ DENOTES FULLY BONDED STRAIGHT STRANDS EXTENDED 2'-2" FROM EA. END OF EA. STEM (90° BEND @ 8" OUT)
- ⋄ DENOTES FULLY BONDED STRAIGHT STRANDS TO BE CUT FLUSH W/ EA. END OF EA. STEM

3/11/16 ADDED THIS SHEET T.D.

APPROVAL STAMP:
Vermont Agency of Transportation
RECEIVED
CK'D BY SC, TM OK'D BY G. Laroche
March 18, 2016
RESUBMIT No Approved
BY K. Higgins DATE 3/28/2016

J.P. CARRARA & SONS INC.
Precast & Prestress Manufacturer
2484 DEE STR., MIDDLEBURY, VERMONT 05753 Phone:(802)388-6361 Fax:(802)388-9010
J.A. McDonald, Inc.
CONTRACTOR
LYNDON CENTER, VERMONT
STATE OF VERMONT AGENCY OF TRANSPORTATION
COUNTY OF RUTLAND
TOWN OF CLARENDON
WALKER MOUNTAIN ROAD, TH #3, RURAL COLLECTOR
BRIDGE NO.: 11 PROJECT NO.: BRO 1443(4B)
DATE: JAN. 8, 2016
SCALE: NOTED
CHKD: DFTM: T.D.
JOB NO: 23476-015
PRESTRESSED NEXT BEAM DETAILS
DWG. NO: NB3.1