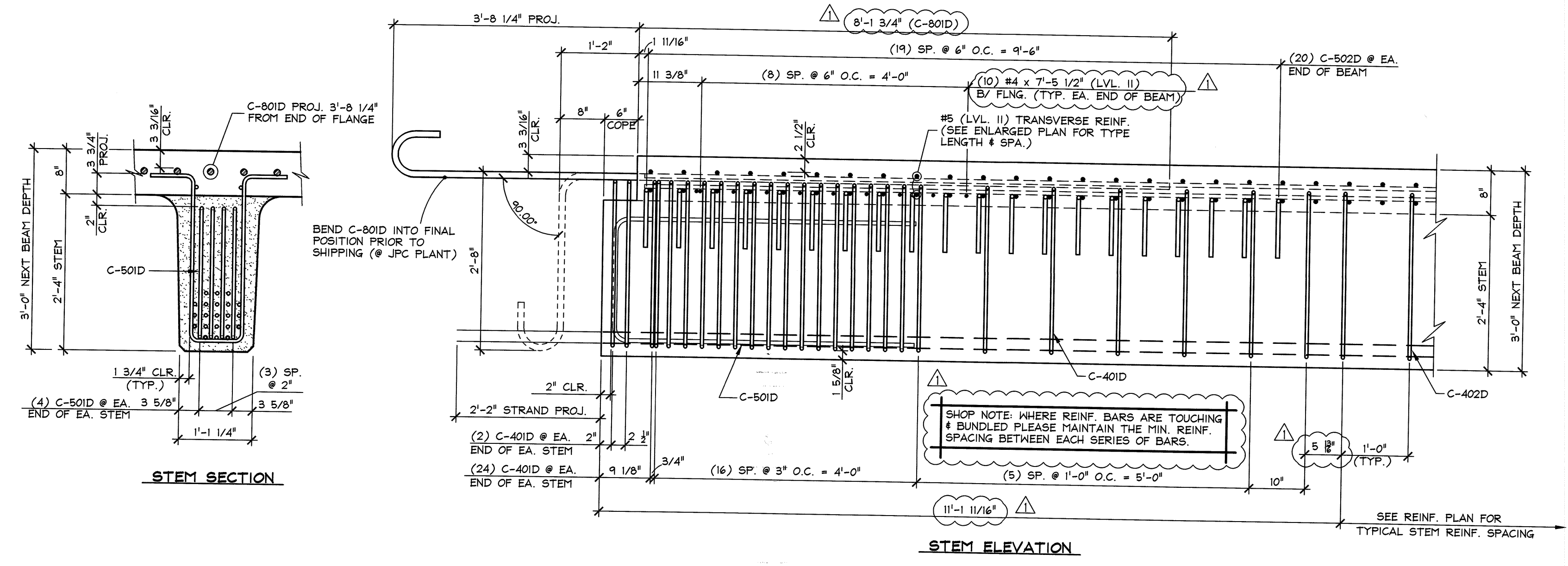
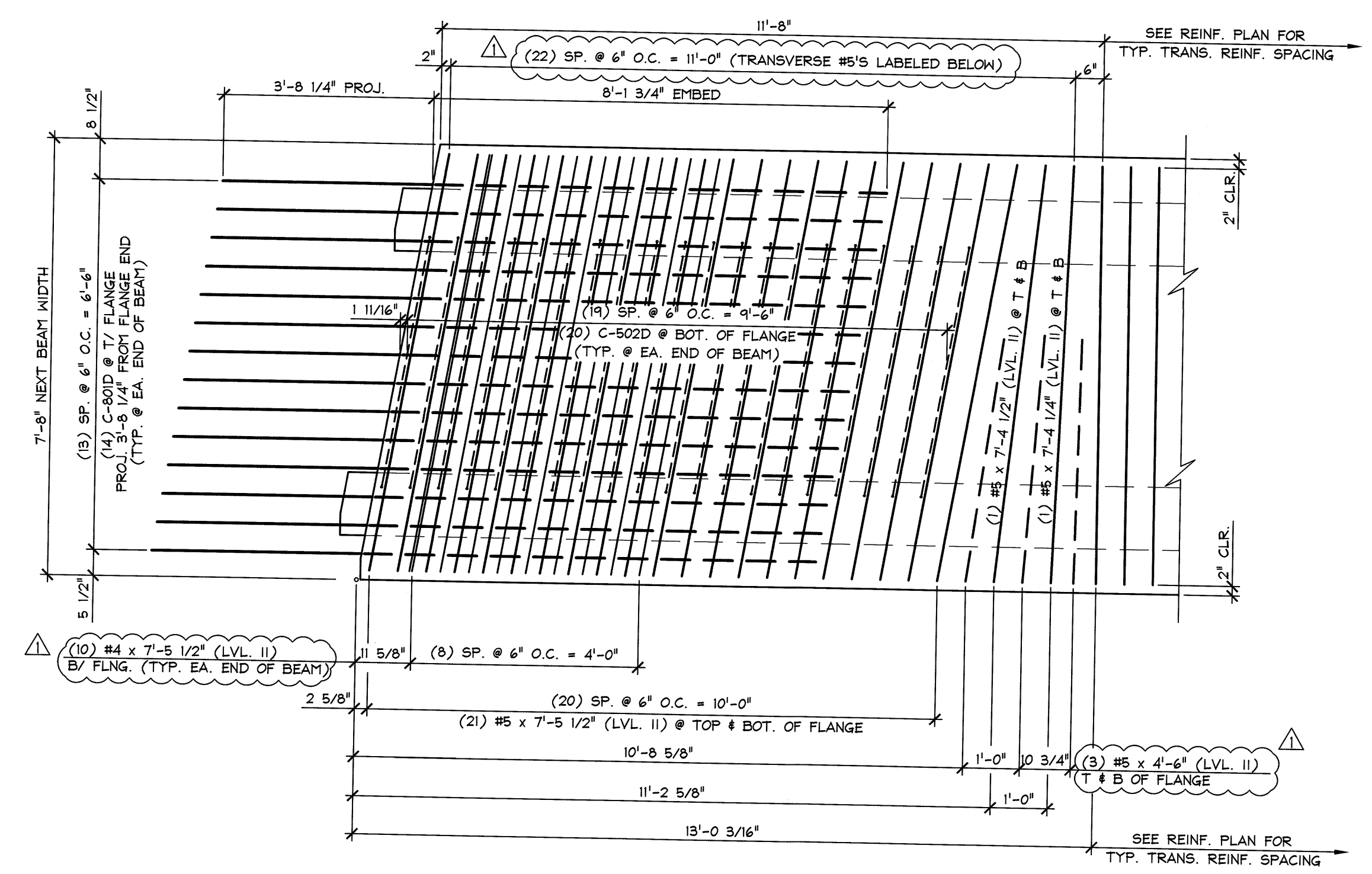
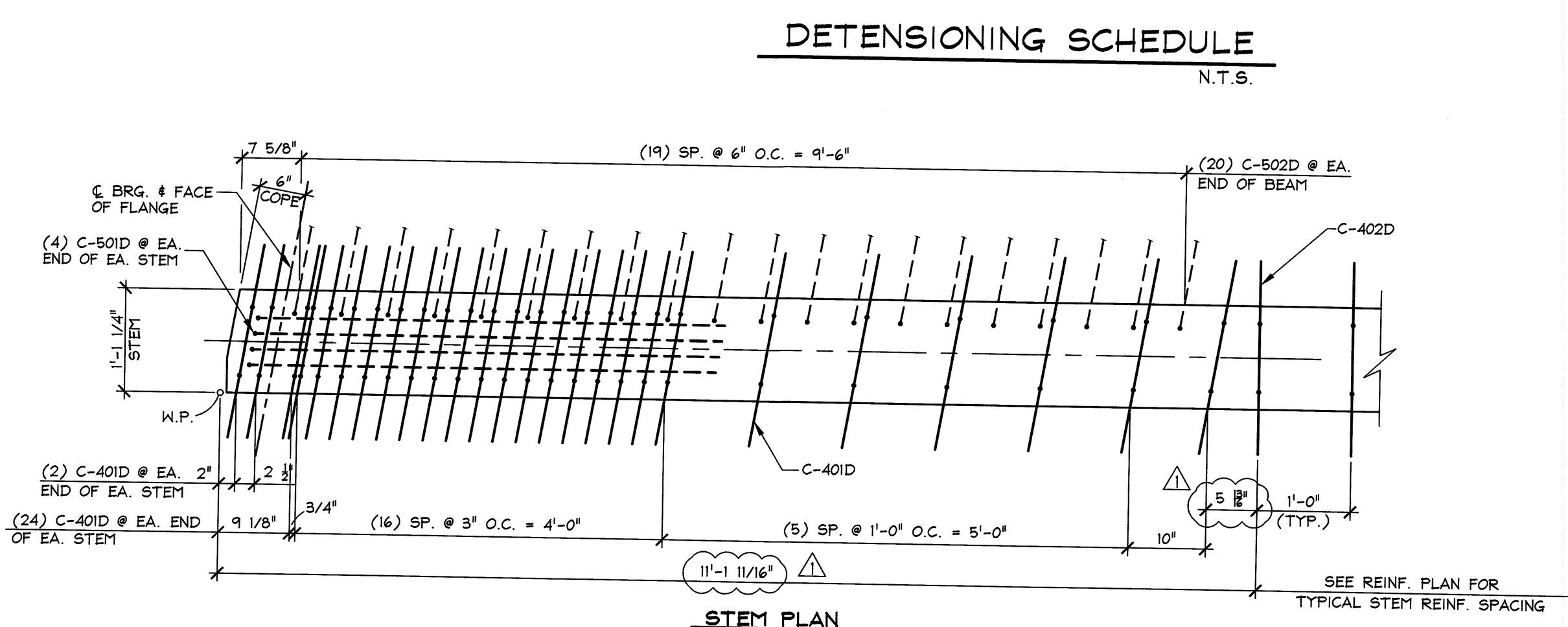
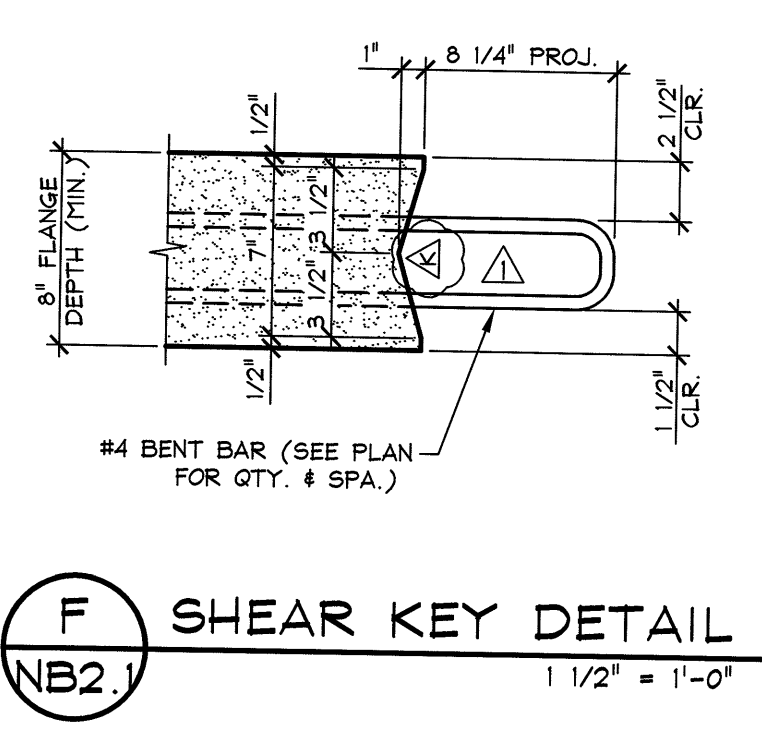
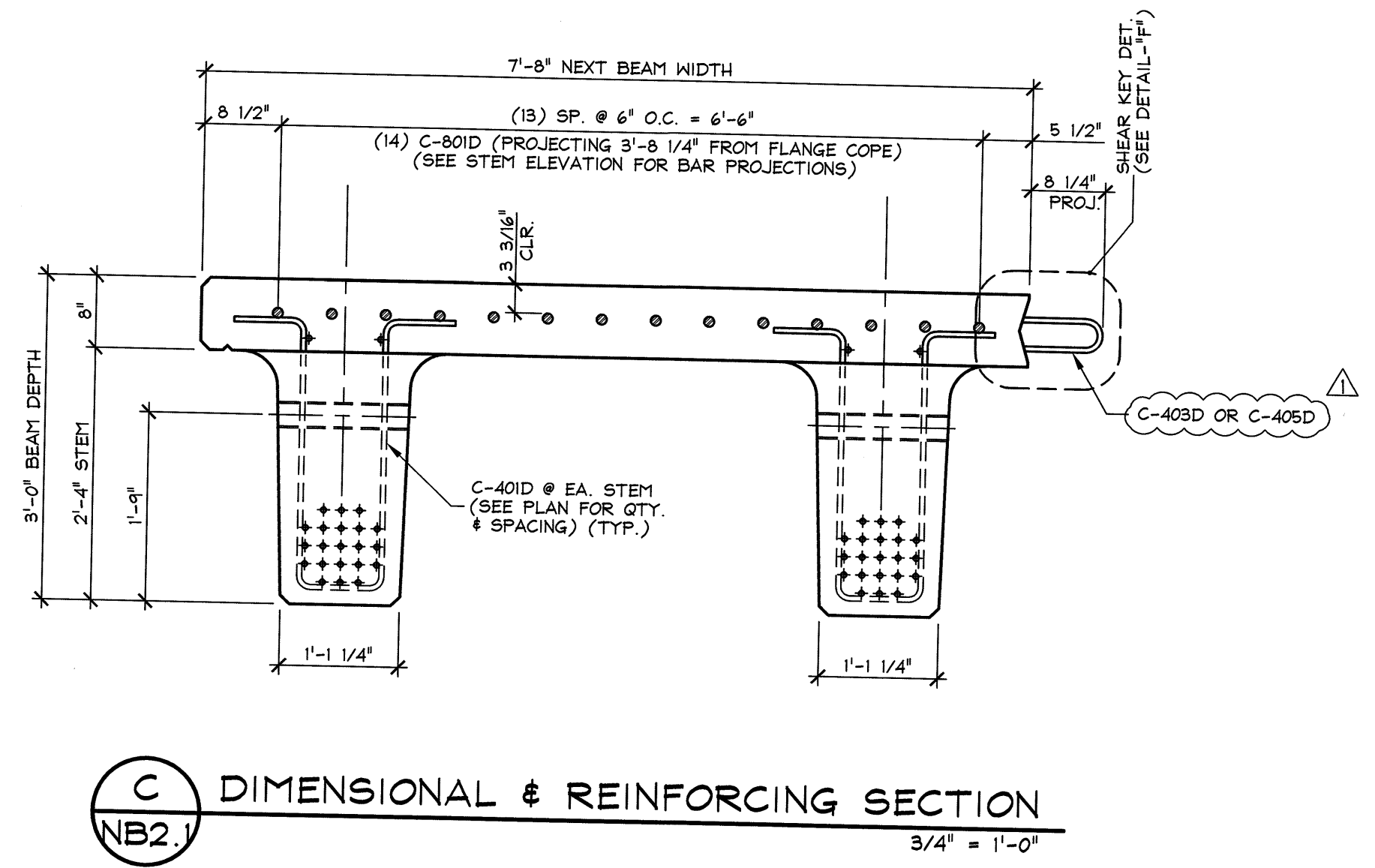


PRESTRESSING NOTATIONS

- ▽ DENOTES STRAIGHT STRANDS TO BE DEBONDED 6" FROM EA. END OF EA. STEM
- ⊕ DENOTES STRAIGHT STRANDS TO BE DEBONDED 2'-0" FROM EA. END OF EA. STEM
- ▲ DENOTES STRAIGHT STRANDS TO BE DEBONDED 4'-0" FROM EA. END OF EA. STEM
- ⊙ DENOTES FULLY BONDED STRAIGHT STRANDS EXTENDED 2'-2" FROM EA. END OF EA. STEM (90° BEND @ 8" OUT)
- ⋄ DENOTES FULLY BONDED STRAIGHT STRANDS TO BE CUT FLUSH W/ EA. END OF EA. STEM



3/11/16 REVISED AS PER ENGINEERS COMM. T.D.

APPROVAL STAMP:

Vermont Agency of Transportation
RECEIVED
CK'D BY SC, TM OK'D BY G. Laroche

March 18, 2016
RESUBMIT No Approved
BY K. Higgins DATE 3/28/2016

J.P. CARRARA & SONS INC.
Precast & Prestress Manufacturer
2464 OSE STR., MOORESBURY, VERMONT 05753 Phone: (802)388-6361 Fax: (802)388-9010

J.A. McDonald, Inc.
CONTRACTOR
LYNDON CENTER, VERMONT

STATE OF VERMONT AGENCY OF TRANSPORTATION
COUNTY OF RUTLAND

TOWN OF CLARENDON
WALKER MOUNTAIN ROAD, TH #3, RURAL COLLECTOR
BRIDGE NO.: 11 PROJECT NO.: BRO 1443(48)

DATE: JAN. 8, 2016
SCALE: NOTED
CHKD: DFTM: T.D.
JOB NO: 23476-015

PRESTRESSED NEXT BEAM DETAILS
DWG. NO: NB2.1