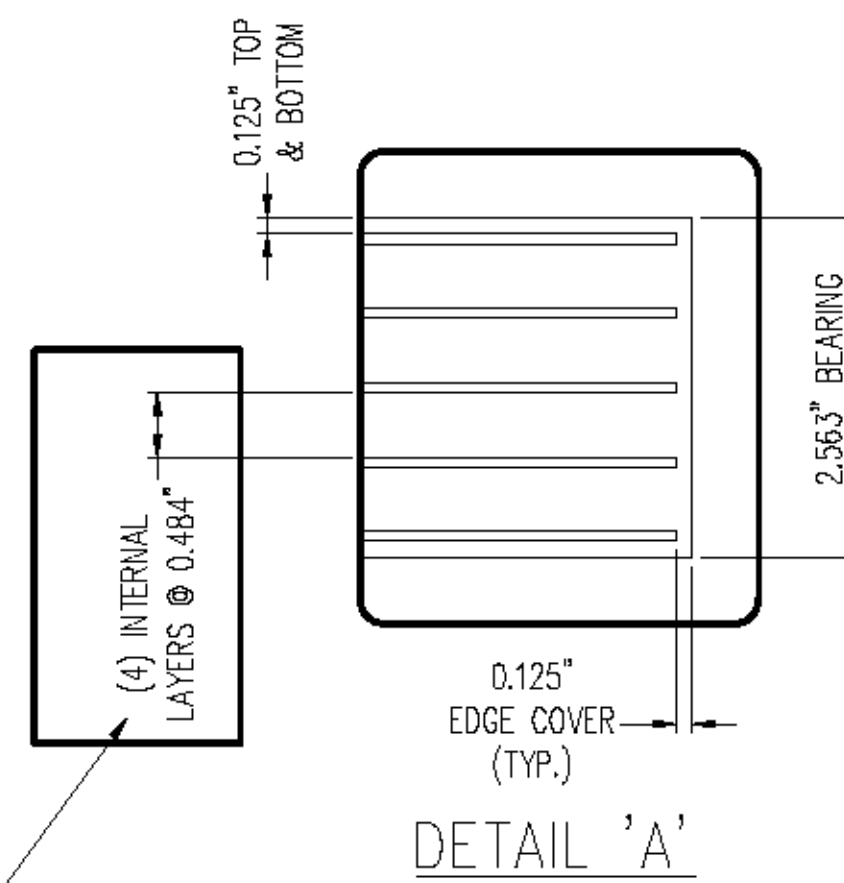
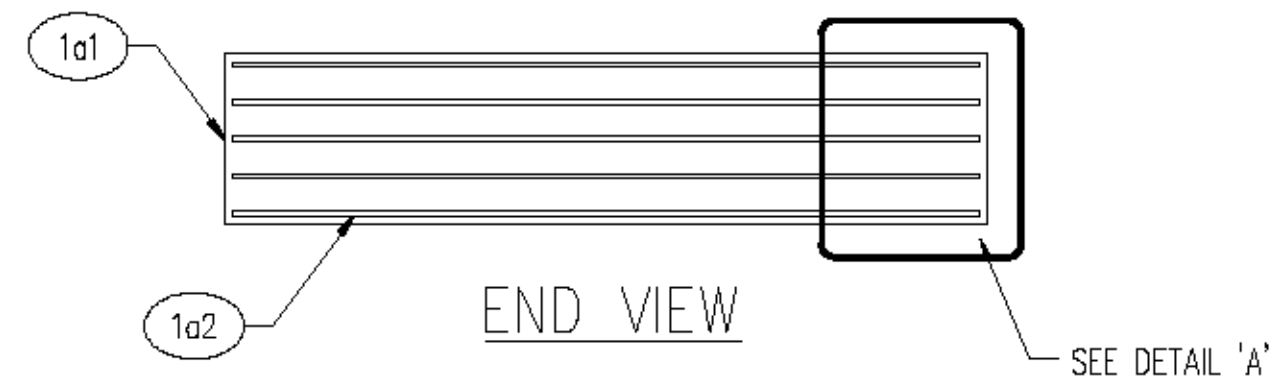


PLAN VIEW
 ELASTOMERIC BEARING
 (6) REQ'D @ S. ABUTMENT
 (6) REQ'D @ N. ABUTMENT
 (12) REQ'D TOTAL



This is an acceptable change.

PLEASE VERIFY
 SEE DS BROWN 49123-1104-RF1#1

GENERAL NOTES:

1. MATERIALS SHALL CONFORM TO STATE OF VERMONT, AGENCY OF TRANSPORTATION STANDARD SPECIFICATIONS FOR CONSTRUCTION, DATED 2011 AND THE LATEST REVISIONS, INCLUDING SUPPLEMENTARY SPECIFICATIONS, CONTRACT PLANS, AND THE SPECIAL PROVISIONS.
2. THIS SHOP DRAWING WAS PREPARED IN ACCORDANCE WITH THE CONTRACT PLANS AND SPECIFICATIONS. THE D.S. BROWN COMPANY DOES NOT ACCEPT LIABILITY FOR THE DESIGN OF THE PRODUCTS DETAILED IN THIS SHOP DRAWING.
3. THE D.S. BROWN COMPANY TO SUPPLY ONLY THE PARTS SHOWN ON THIS DRAWING.
4. ALL STEEL SHALL BE PRODUCED IN THE UNITED STATES OF AMERICA.
5. ALL BEARINGS SHALL BE ENCASED IN CONCRETE IN THE FIELD. IN CONFORMANCE WITH THE SPECIAL PROVISIONS NO TESTING IS REQUIRED FOR FULLY ENCASED BEARINGS.
6. IN ACCORDANCE WITH STATE SPECIFICATIONS, THE FABRICATOR SHALL HAVE THE OPTION TO USE NEOPRENE OR NATURAL RUBBER FOR THE ELASTOMER.
7. INTERNAL ALIGNMENT PINS: AFTER FABRICATION, HOLES TO BE FILLED WITH ELASTOMER EQUIVALENT TO THAT USED IN THE MANUFACTURE OF THE PAD.
8. BEARING MANUFACTURING FACILITY AND REPRESENTATIVE FOR COORDINATING PRODUCTION:
 THE D.S. BROWN COMPANY
 300 EAST CHERRY STREET
 NORTH BALTIMORE, OHIO 45872
 CSR - MARCIE THOMPSON - (419) 257-3561

MARKING NOTES:

1. EACH BEARING SHALL BE MARKED WITH THE FOLLOWING INFORMATION: LOCATION ON THE BRIDGE AND ELASTOMER TYPE AND GRADE. ALL MARKS SHALL BE PERMANENT AND BE VISIBLE AFTER BEARING IS INSTALLED.

MK	QTY	DESCRIPTION	MATERIAL	LENGTH	REMARKS	WT*	REV
1A	12	ELASTOMERIC BEARING	49123.1103.1			27	
1a1	12	2.563" X 11.500"	NATURAL RUBBER	11.500"	110 PSI +/-15% GR.4	14	
1a2	60	14 GA. X 11.250"	A1011 GR 36	11.250"	PLAIN	3	
					*Approx. Gross Wt. Lbs Per Single Unit		
					2/11/16 11:09:04 AM		

TOLERANCE TABLE	
DESCRIPTION	TOLERANCE (INCHES U.N.O.)
ELASTOMERIC BEARING DESIGN THICKNESS ≤ 1.250"	-0, +0.1181
ELASTOMERIC BEARING DESIGN THICKNESS > 1.250"	-0, +0.2362
ELASTOMERIC BEARING PLAN DIMENSIONS ≤ .36"	-0, +0.2362
ELASTOMERIC BEARING PLAN DIMENSIONS > .36"	-0, +0.4724
THICKNESS OF INDIVIDUAL LAYERS OF ELASTOMER (LAMINATED BEARINGS ONLY) AT ANY POINT WITHIN THE BEARING	±0.1181
VARIATION FROM A PLANE PARALLEL TO THE THEORETICAL SURFACE (AS DETERMINED BY MEASUREMENTS AT THE EDGE OF THE BEARINGS) (PARALLELISM):	
TOP & BOTTOM	±0.005 RAD
SIDES	±0.2362
POSITION OF EXPOSED CONNECTION MEMBERS	±0.1181
ELASTOMERIC COVER: TOP & BOTTOM	-0, +0.1181
ELASTOMERIC COVER: SIDES	-0, +0.1181
ELASTOMERIC BEARING HOLE OR SLOT SIZE	±0.1181
ELASTOMERIC BEARING HOLE OR SLOT LOCATION	±0.1181

REV.	DESCRIPTION	DATE	DET.	CKD.
	LOCATION — WALKER MOUNTAIN RD			
	BRIDGE — 11			
	PROJECT — BRD 1443 (48)			
	PROJECT NAME — CLARENDON			
	P.O. NO. — JAM 11615			
	DESIGNER — VTDOT			
	CUSTOMER — J.A. McDONALD			
DESCRIPTION: VERSIFLEX ELASTOMERIC BEARING		SCALE: N.T.S.	DRAWN BY: SP	CHECKED BY: ECW
RUTLAND COUNTY, VT		PROJECT NUMBER: 49123	PRODUCT CODE: 1103	DATE: 2/16
		RELEASE		SHEET: 01

D.S. BROWN
 A GIBRALTAR INDUSTRIES COMPANY

THE D.S. BROWN COMPANY
 300 E. CHERRY STREET
 NORTH BALTIMORE, OHIO 45872
 419.257.3561
 FAX: 419.257.0332
 WWW.DSBROWN.COM