

CONSTRUCT AGGREGATE SURFACE COURSE
 DRIVES W/ 5'-0" PAVED APRONS
 STA 11+12.00 LT - 45.00' WIDE
 STA 12+38.00 RT - 15.00' WIDE
 STA 13+00.00 LT - 28.00' WIDE

REMOVAL AND DISPOSAL OF GUARDRAIL
 STA 11+38.71 - 11+76.24 RT
 STA 11+61.18 - 11+73.59 LT
 STA 12+03.84 - 12+40.25 LT
 STA 12+05.83 - 12+18.60 RT

REMOVAL OF EXISTING DELINEATOR
 STA 11+46.19 LT

RELOCATE MAILBOX, SINGLE SUPPORT
 REMOVE FROM STA 11+06.00 RT (4)
 RELOCATE TO STA 10+20.00 RT (4)

18" OPTION PIPE
 STA 10+75.00 - 11+50.00

REMOVAL OF EXISTING CULVERT
 STA 10+75.00 - 11+50.00

SPECIAL PROVISION (REMOVE AND
 RELOCATE EXISTING STONE WALL)
 STA 12+12.71 - 12+35.25 LT
 STA 12+47.21 - 12+70.26 LT

REMOVING AND RESETTING
 PROPERTY MARKERS
 STA 11+71.00 LT
 N = 383271.2824
 E = 1501608.8904
 STA 12+12.50 RT
 N = 383332.7475
 E = 1501625.1234

4" SLEEVE FOR FUTURE WATERLINE
 INSTALL NEW STA 10+60.00
 W/ANCHOR (15' LEAD)
 STA 10+90.00, STEEL MARKER POST
 STA 10+60.00 LT
 STA 10+60.00 RT

EASEMENT AREA NEEDED FOR
 RELOCATION AND TRIMMING

RETAIN EXISTING POLE
 # 118 / 5 / 118
 INSTALL NEW ANCHOR
 12' LEAD

PI#1 MAINLINE
 STA 13+00.00 BK
 STA 13+00.00 AH
 N = 383391.0568
 E = 1501555.4276

2
 BOWEN, KIMBERLY

**END R.O.W. PROJECT
 CLARENDON BRO 1443 (48)
 STA. 14+39, 24.77' LT**

POE MAINLINE
 STA 14+50.00
 N = 383516.0330
 E = 1501472.4744

**BEGIN R.O.W. PROJECT
 CLARENDON BRO 1443 (48)
 STA. 9+67, 25.02' LT**

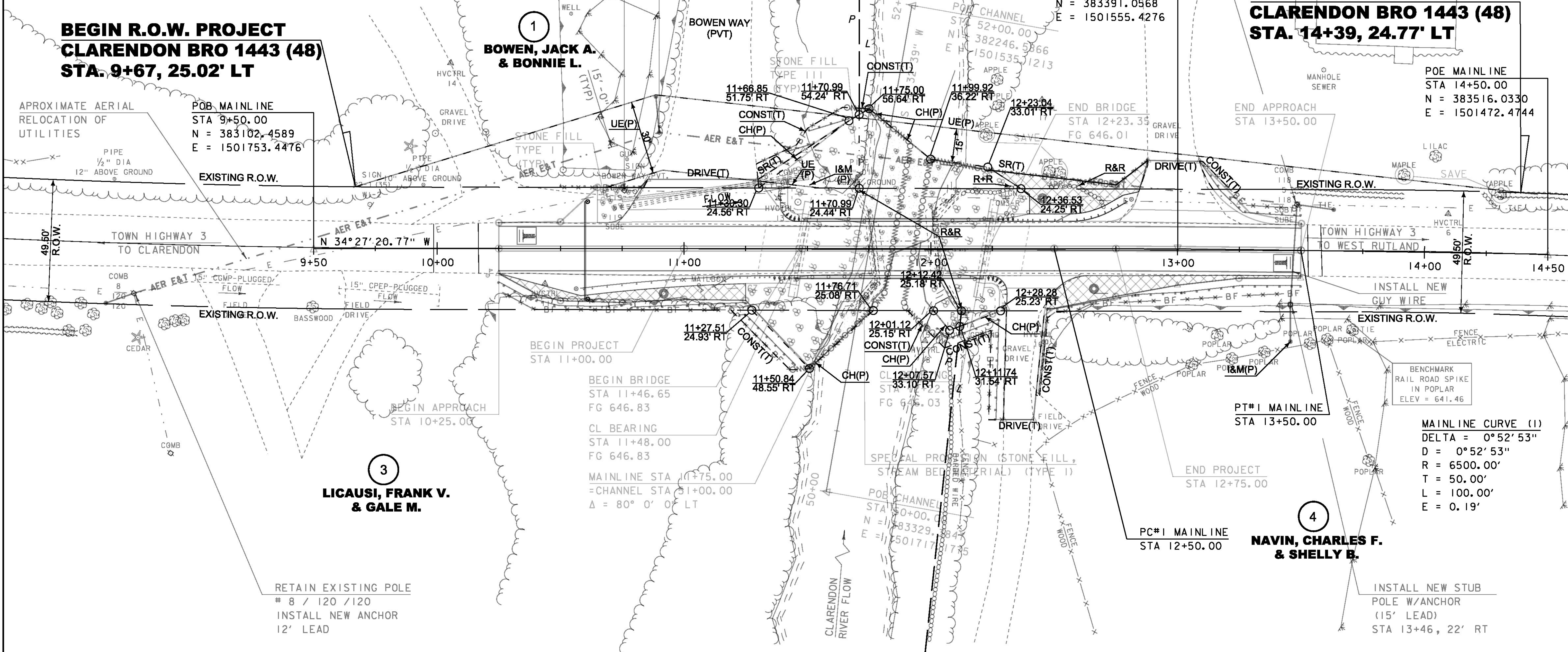
POB MAINLINE
 STA 9+50.00
 N = 383102.4589
 E = 1501753.4476

1
 BOWEN, JACK A.
 & BONNIE L.

3
 LICAUSI, FRANK V.
 & GALE M.

4
 NAVIN, CHARLES F.
 & SHELLY B.

MAINLINE CURVE (1)
 DELTA = 0°52'53"
 D = 0°52'53"
 R = 6500.00'
 T = 50.00'
 L = 100.00'
 E = 0.19'



NOTE:
 1. WORK TO BE DONE BY OTHERS.
 EXISTING BRIDGE DATA
 CONCRETE T-BEAMS, BUILT 1927
 STRUCTURE LENGTH = 31'
 MAX SPAN LENGTH = 29'
 DECK WIDTH = 23.4'

LAYOUT SHEET
 SCALE 1" = 20' - 0"
 20 0 20

FOR R.O.W.
 USE ONLY

LINES SHOWN ON THIS PLAN AS EXISTING
 PROPERTY LINES P/L ARE BELIEVED TO
 BE ACCURATE BUT SHOULD NOT BE RELIED
 UPON FOR PURPOSES UNRELATED TO THE
 STATE OF VERMONT'S ACQUISITION OF LAND
 AND RIGHTS FOR THIS PROJECT.

PROJECT NAME: CLARENDON
 PROJECT NUMBER: BRO 1443(48)

FILE NAME: r12j160lay.dgn
 PROJECT LEADER: K. HIGGINS
 DESIGNED BY: J. GRIGAS
 R.O.W. LAYOUT SHEET 1 OF 1

PLOT DATE: 08-OCT-2015
 DRAWN BY: A. EGIZI
 CHECKED BY: R. CLOUTIER
 SHEET 58 OF 59