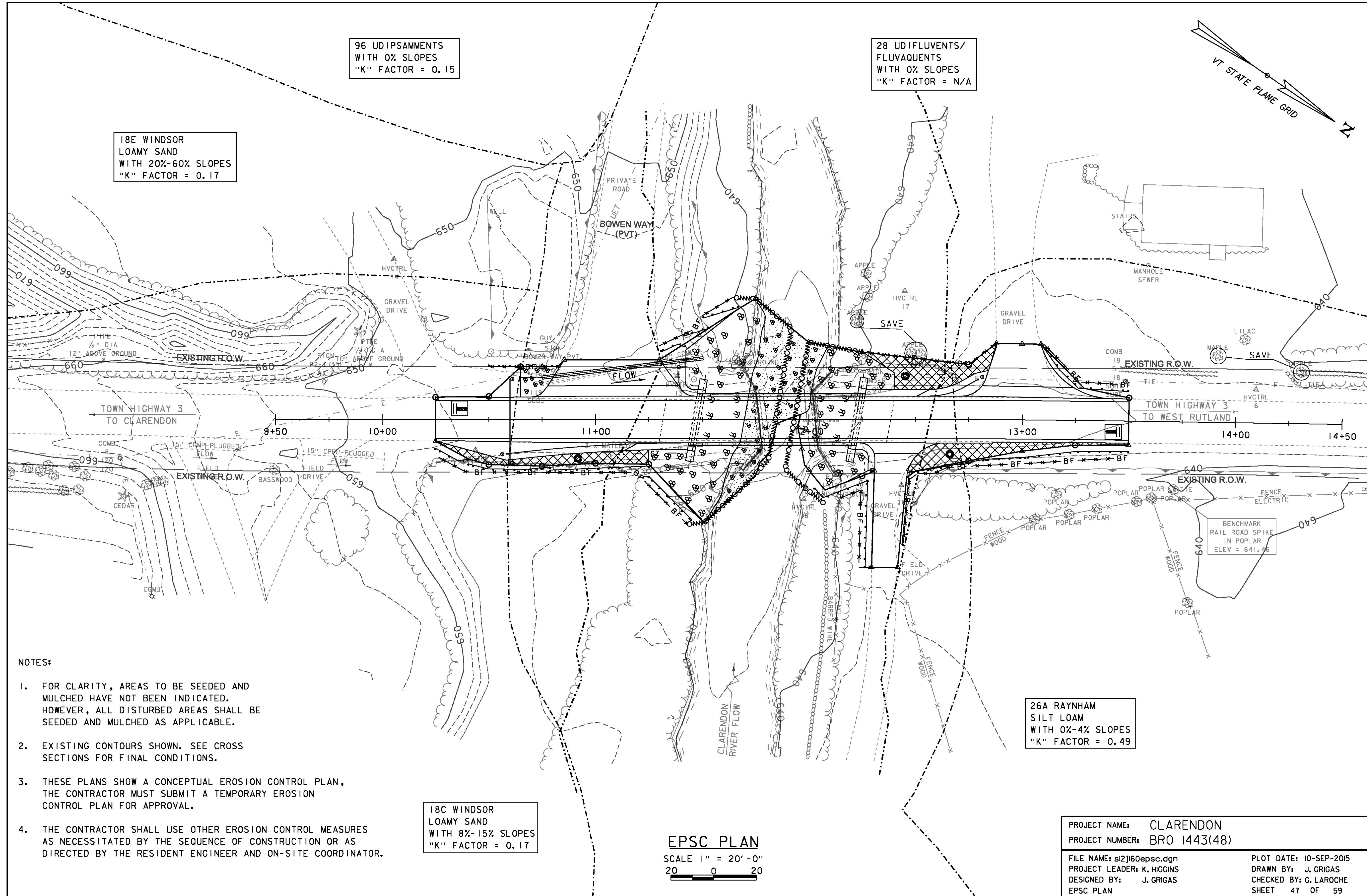


96 UDIPSAMMENTS
WITH 0% SLOPES
"K" FACTOR = 0.15

28 UDIFLUENTS/
FLUVAQUENTS
WITH 0% SLOPES
"K" FACTOR = N/A

18E WINDSOR
LOAMY SAND
WITH 20%-60% SLOPES
"K" FACTOR = 0.17



NOTES:

1. FOR CLARITY, AREAS TO BE SEEDED AND MULCHED HAVE NOT BEEN INDICATED. HOWEVER, ALL DISTURBED AREAS SHALL BE SEEDED AND MULCHED AS APPLICABLE.
2. EXISTING CONTOURS SHOWN. SEE CROSS SECTIONS FOR FINAL CONDITIONS.
3. THESE PLANS SHOW A CONCEPTUAL EROSION CONTROL PLAN, THE CONTRACTOR MUST SUBMIT A TEMPORARY EROSION CONTROL PLAN FOR APPROVAL.
4. THE CONTRACTOR SHALL USE OTHER EROSION CONTROL MEASURES AS NECESSITATED BY THE SEQUENCE OF CONSTRUCTION OR AS DIRECTED BY THE RESIDENT ENGINEER AND ON-SITE COORDINATOR.

18C WINDSOR
LOAMY SAND
WITH 8%-15% SLOPES
"K" FACTOR = 0.17

26A RAYNHAM
SILT LOAM
WITH 0%-4% SLOPES
"K" FACTOR = 0.49

EPSC PLAN
SCALE 1" = 20'-0"
20 0 20

PROJECT NAME:	CLARENDON
PROJECT NUMBER:	BRO 1443(48)
FILE NAME:	st2j160epsc.dgn
PROJECT LEADER:	K. HIGGINS
DESIGNED BY:	J. GRIGAS
EPSC PLAN	
PLOT DATE:	10-SEP-2015
DRAWN BY:	J. GRIGAS
CHECKED BY:	G. LAROCHE
SHEET	47 OF 59