

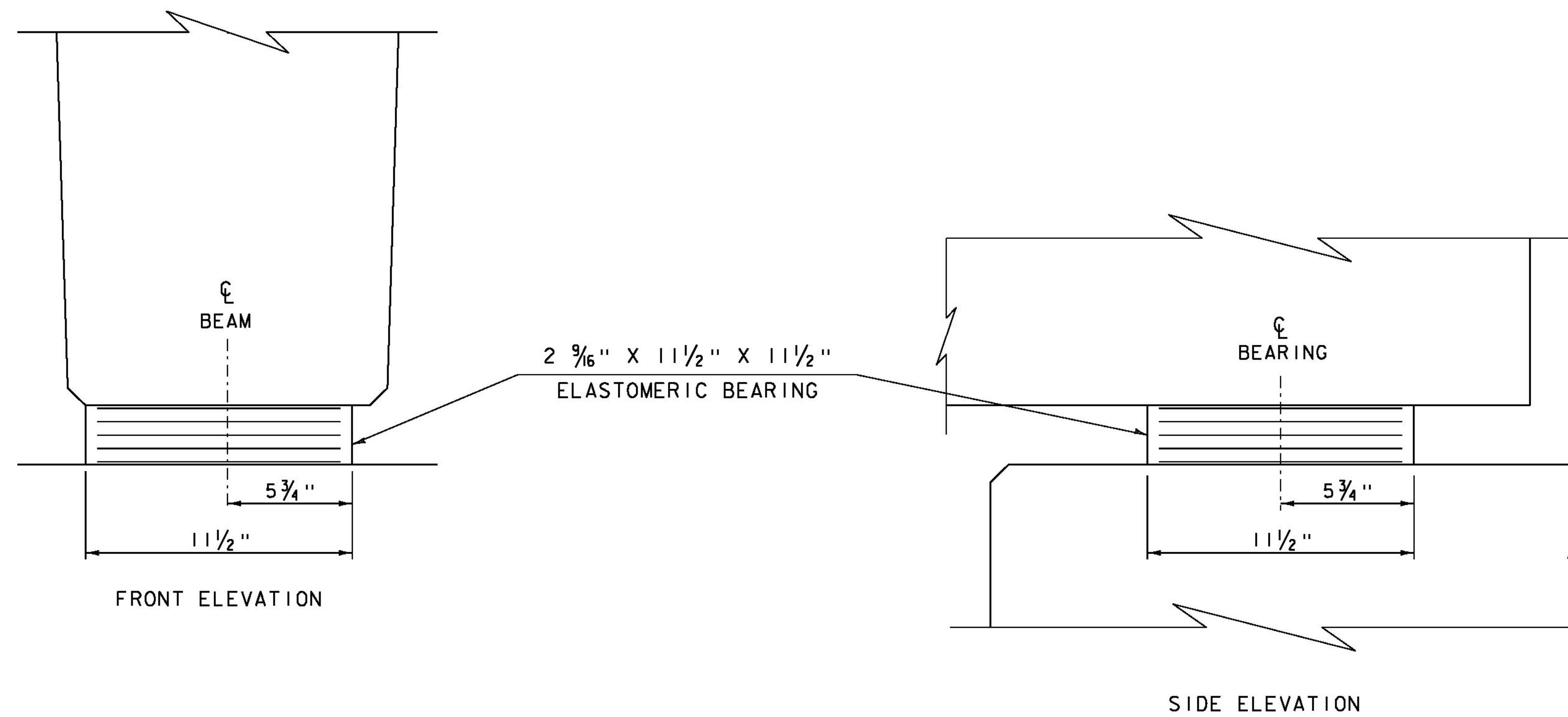
**ELASTOMERIC BEARING DETAIL**

SCALE 3" = 1'-0"

- \* 2 - 1/8" EXTERIOR LAYERS OF ELASTOMER
- 4 - 1/2" INTERIOR LAYERS OF ELASTOMER
- 5- 1/16" STEEL REINFORCING PLATES

**BEARING NOTES:**

1. NEXT BEAM ALTERNATE SHOWN. SAME BEARING DETAILS TO BE USED FOR PBU ALTERNATE.
2. BEARINGS SHALL CONFORM TO THE APPLICABLE SUBSECTIONS OF SECTIONS 531 AND 731.
3. ALL REINFORCEMENT BETWEEN LAYERS OF ELASTOMER SHALL BE STEEL MEETING THE REQUIREMENTS OF SUBSECTION 714.02. ALL INTERNAL STEEL SHEETS SHALL BE SAND BLASTED AND FREE OF COATINGS, RUST AND MILL SCALE. THE SHEETS SHALL BE FREE OF SHARP EDGES AND BURRS.
4. STEEL REINFORCED ELASTOMERIC BEARINGS SHALL HAVE A MINIMUM 1/8" EDGE SEAL OF ELASTOMER INTEGRAL WITH BEARING OVER ALL INTERNAL SHEETS.
5. THE ELASTOMER WAS DESIGNED WITH A SHEAR MODULUS OF 100 PSI +/- 15%.
6. THE CONTRACTOR IS ADVISED TO HAVE A MINIMUM OF 12 - 1/4"x12 1/2"x12 1/2" GALVANIZED STEEL SHIMS AVAILABLE FOR USE FOR ELEVATION ADJUSTMENTS UPON THE SETTING OF THE SUPERSTRUCTURE UNITS. THE SHIMS SHALL BE FABRICATED ACCORDING TO SECTION 531 AND SHALL BE INCLUDED IN THE UNIT PRICE BID FOR ITEM 531.17, "BEARING DEVICE ASSEMBLY, STEEL REINFORCED ELASTOMERIC PAD".



**ELASTOMERIC BEARING DETAILS**

SCALE 3" = 1'-0"

|                 |               |
|-----------------|---------------|
| PROJECT NAME:   | CLARENDON     |
| PROJECT NUMBER: | BRO 1443(48)  |
| FILE NAME:      | s2j160brg.dgn |
| PROJECT LEADER: | K. HIGGINS    |
| DESIGNED BY:    | J. GRIGAS     |
| BEARING DETAILS |               |
| PLOT DATE:      | 08-OCT-2015   |
| DRAWN BY:       | G. DARGAN     |
| CHECKED BY:     | J. GRIGAS     |
| SHEET           | 44 OF 59      |