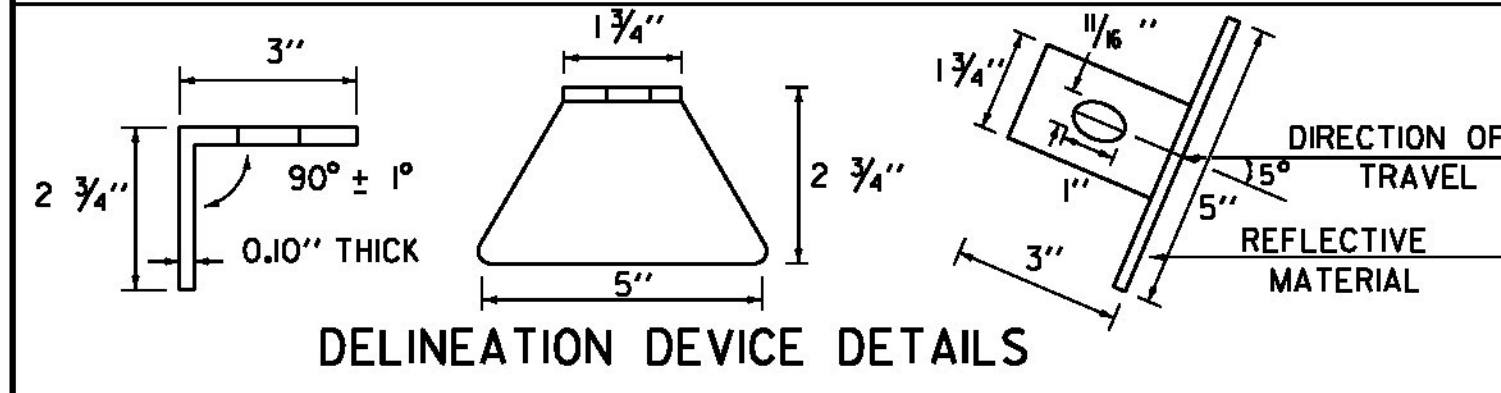


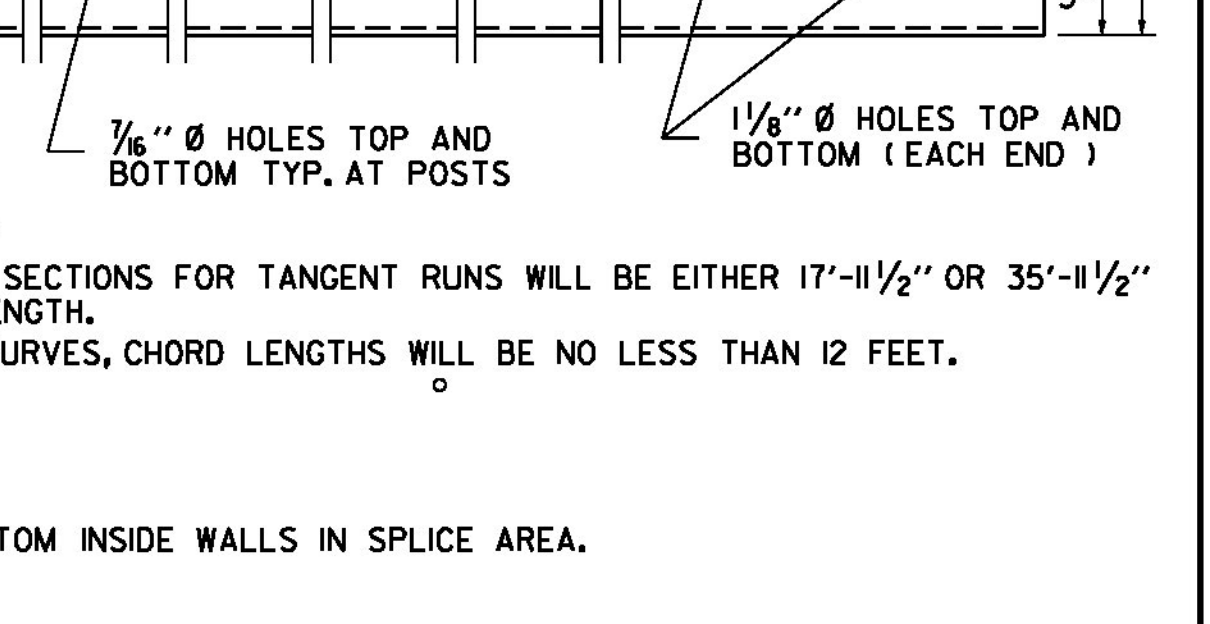
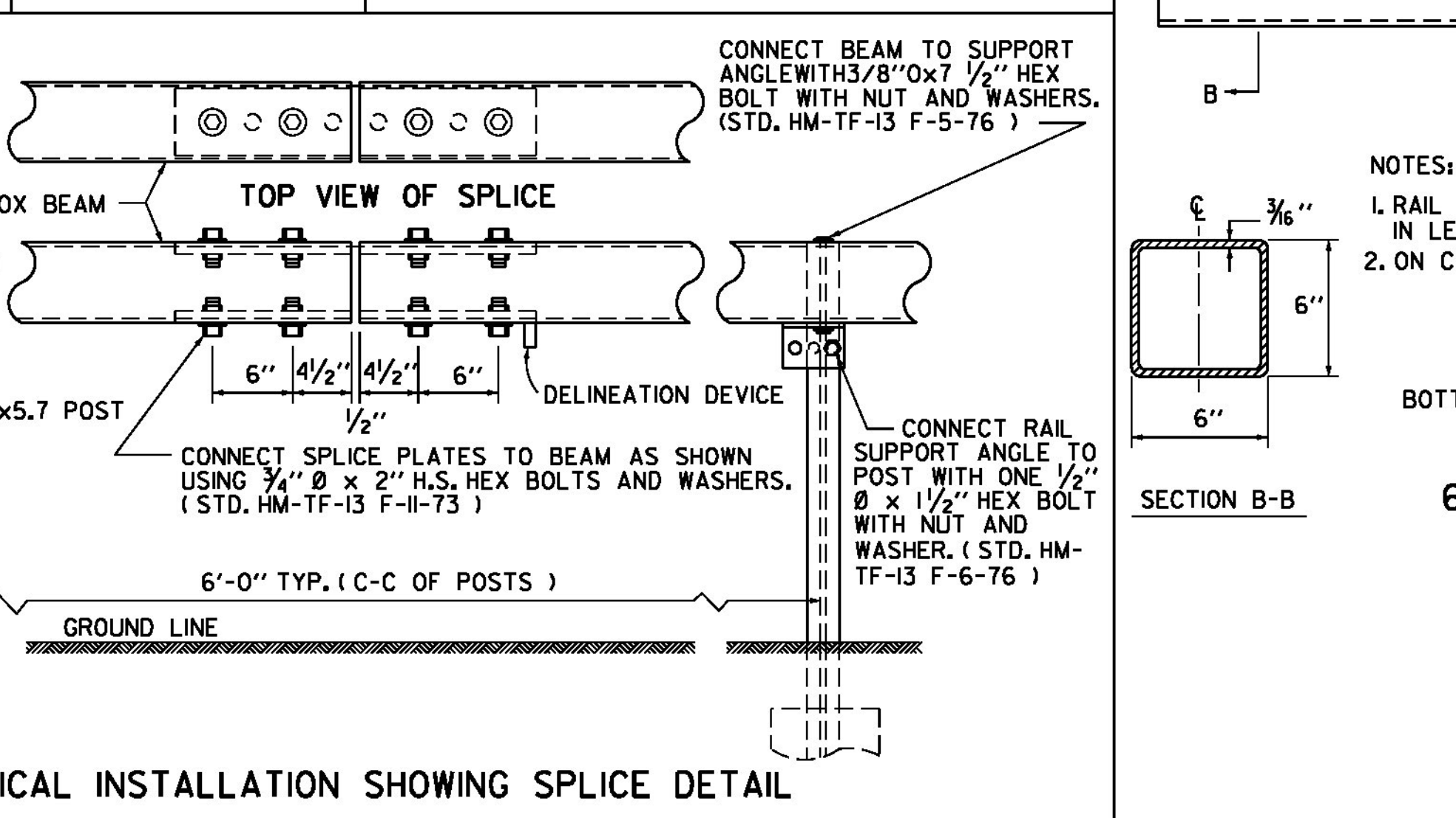
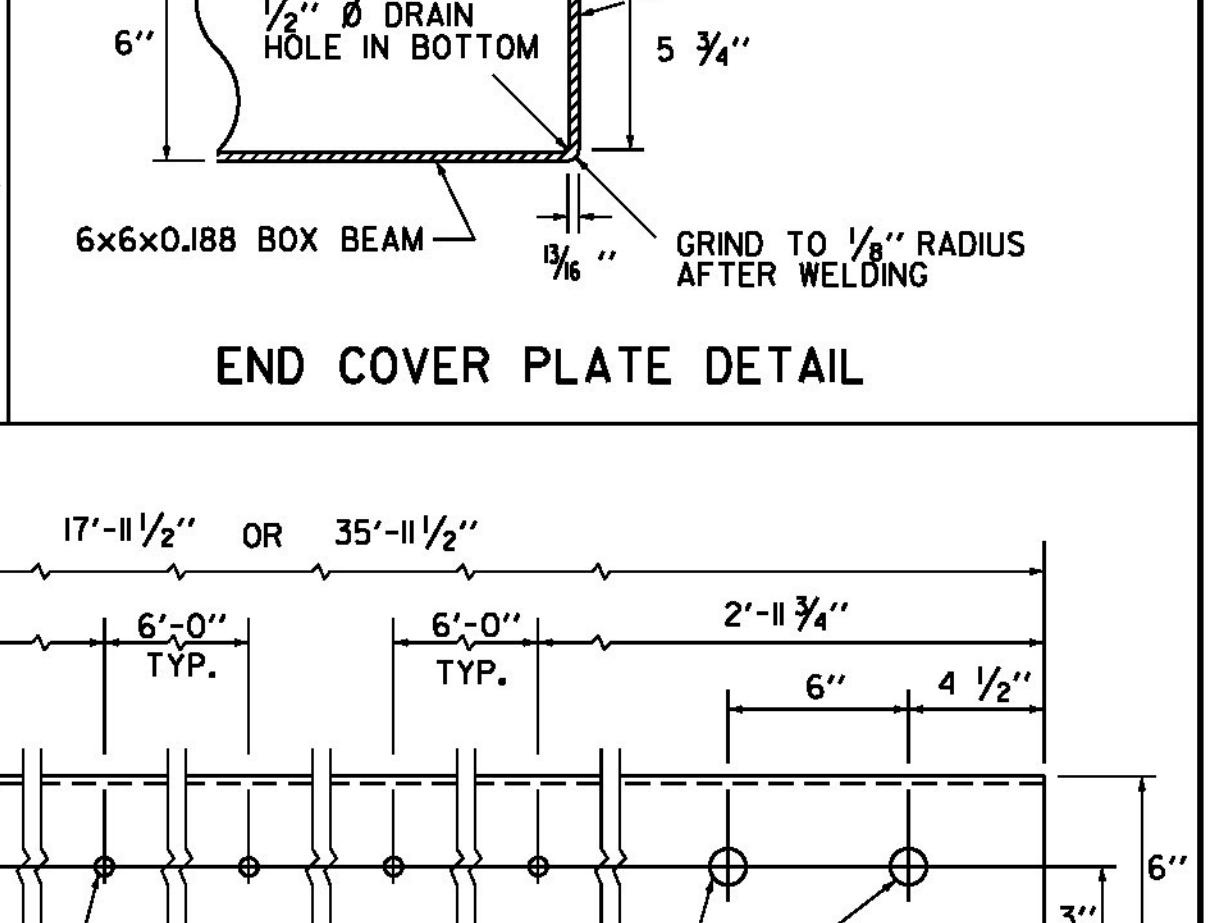
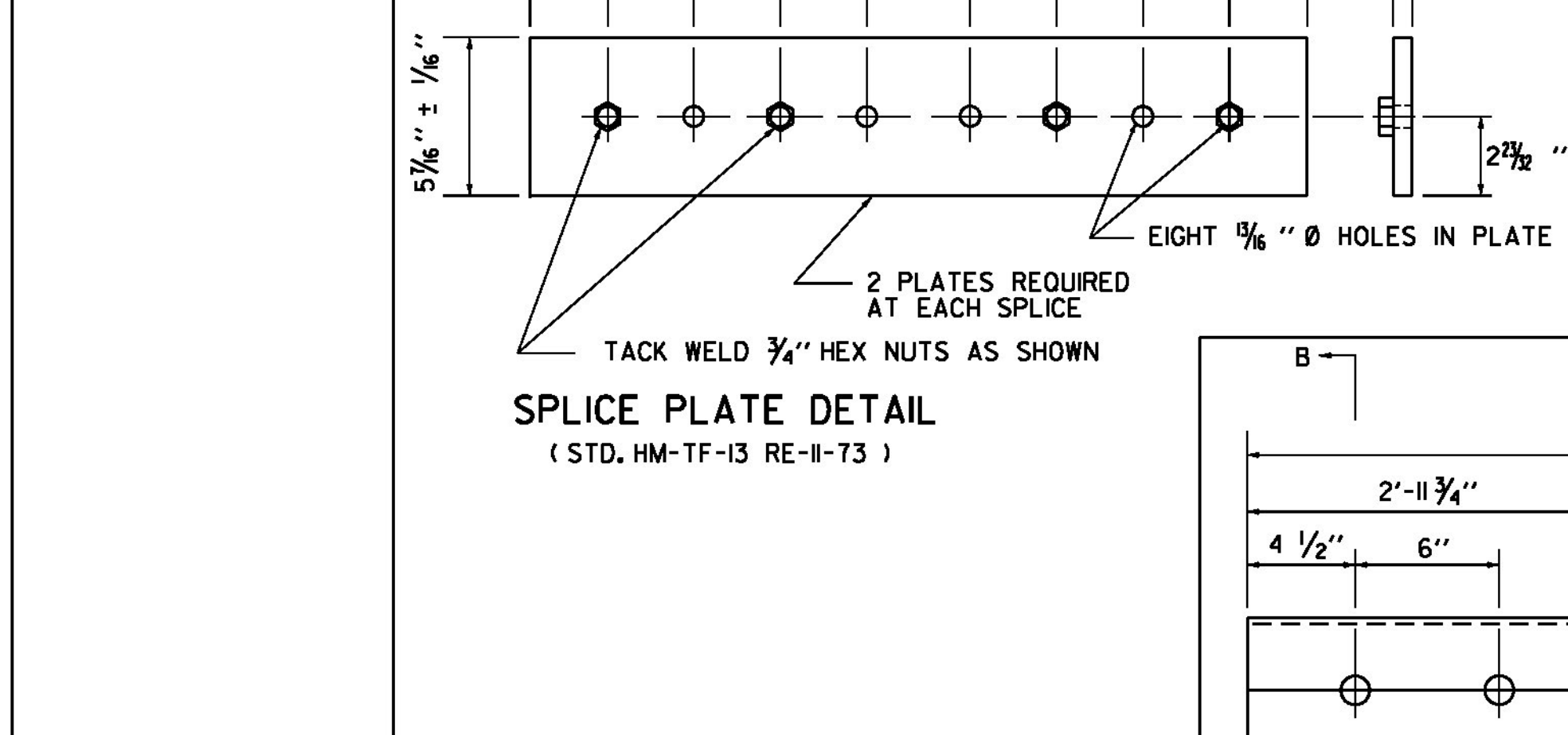
MAX. FLARE RATE (B/A)	TRANSITION CURVE LENGTH	OFFSET "C" FOR MIN. TRANS. CURVE	OFFSET "D" FOR END OFFSET	OFFSET "D" FOR APPROACH RAIL
9:1	78 FEET	15'-4"	15'-4"	11'-9"

- GENERAL NOTES**
- FOR MATERIAL REQUIREMENTS AND CONSTRUCTION DETAILS SEE SPECIFICATIONS FOR BOX BEAM GUARD RAIL.
 - RAIL ALIGNMENT TO BE STRAIGHT AT SPLICES. NO LATERAL BENDS PERMITTED WITHIN THE SPLICE. THIS DOES NOT PRECLUDE THE SHOP FABRICATION OF BENT SPLICES.
 - THE LINE OF BOX BEAM GUARD RAIL WHEN COMPLETED SHALL PRESENT A SMOOTH AND PLEASING GRADE LINE IN BOTH HORIZONTAL AND VERTICAL PLANES.
 - ALL POSTS IN A GIVEN RUN TO BE OF THE SAME TYPE.
 - TRANSITION CURVE TO BEGIN AT POST 1 OF APPROACH RAIL. SEE APPROACH RAIL WW2 FOR FURTHER DETAILS.



THIS REFLECTORIZED ALUMINUM DELINEATION DEVICE IS TO BE ERECTED EVERY 36 FEET, AT SPLICES. DELINEATOR SHALL MEET SPECIFICATION REQUIREMENTS FOR ASTM B209 ALLOY 5052-H32.

DELINEATION DEVICES SHALL MEET THREE REQUIREMENTS OF SUBSECTION 728.04 AND 750.08. REFLECTIVE MATERIAL SHALL BE OF ENCAPSULATED LENS SILVER OR AMBER.



PROJECT NAME: CLARENDON	PLOT DATE: 10-SEP-2015
PROJECT NUMBER: BRO 1443(48)	DRAWN BY: S. COLEY
FILE NAME: s12j160rallidet.dgn	CHECKED BY: G. LAROCHE
PROJECT LEADER: K. HIGGINS	DESIGNED BY: J. GRIGAS
DESIGNED BY: J. GRIGAS	BOX BEAM DETAILS
	SHEET 25 OF 59