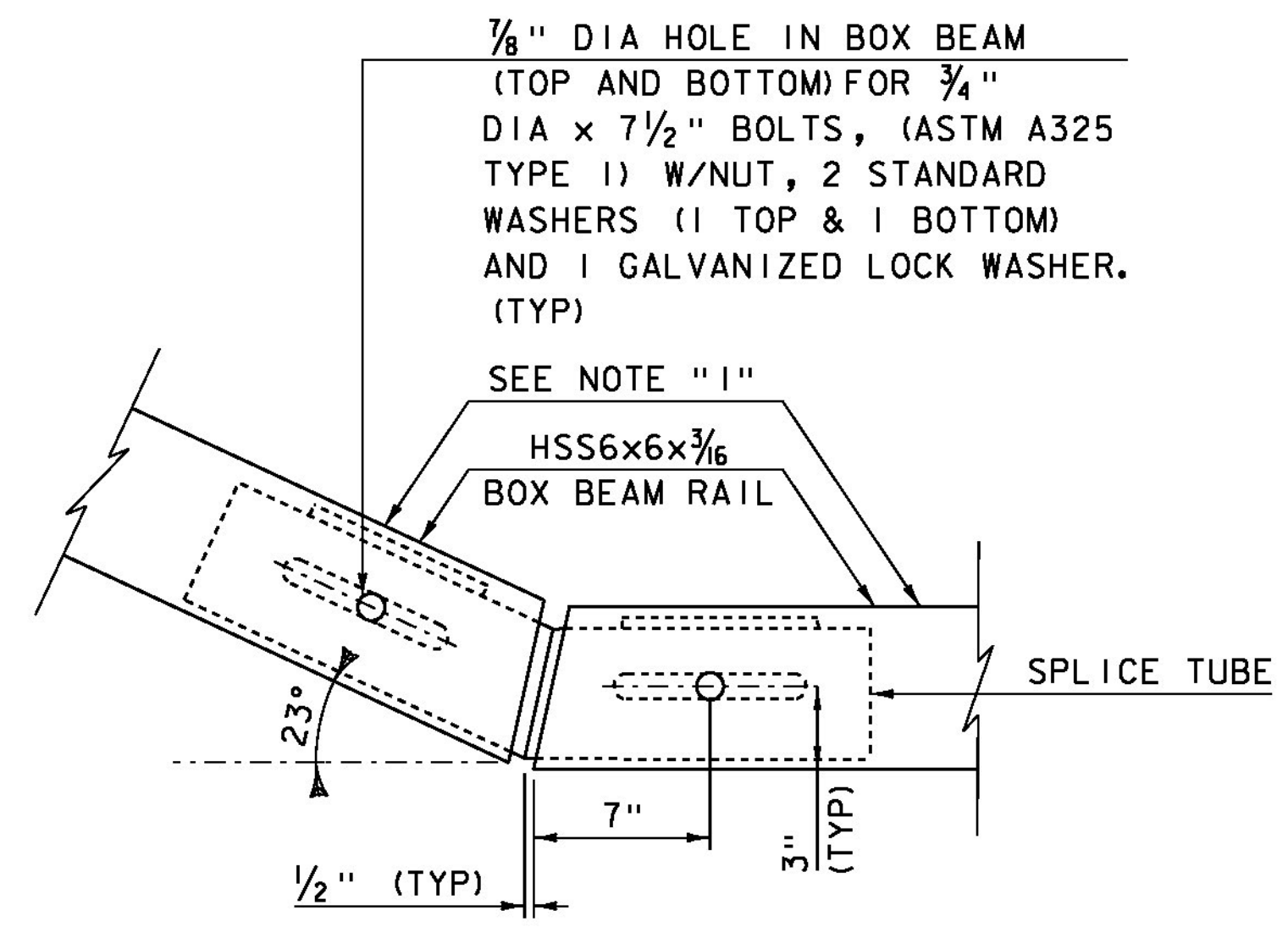
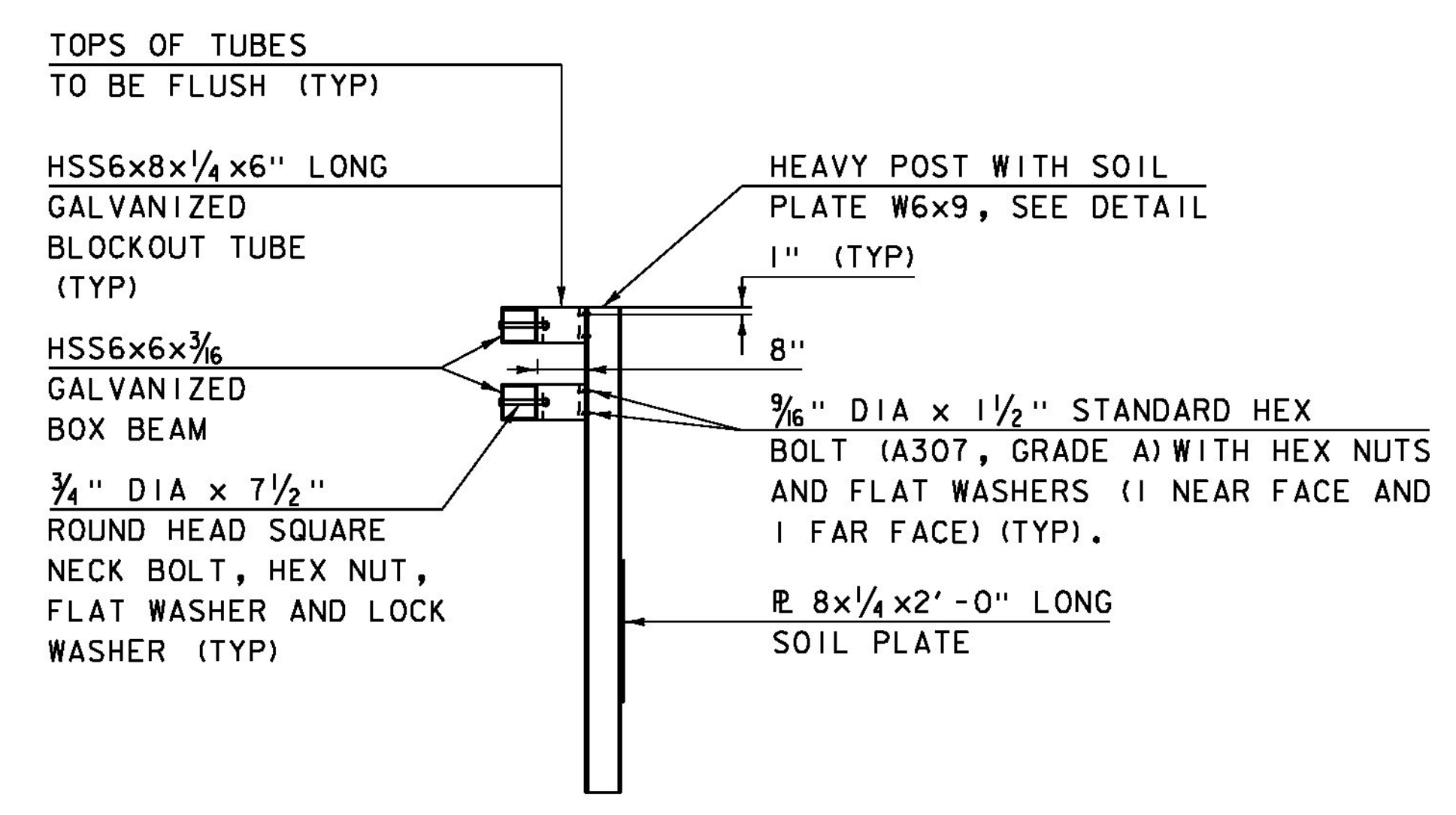


HEAVY POST DETAIL
NOT TO SCALE

TRANSITION POST DETAIL
NOT TO SCALE



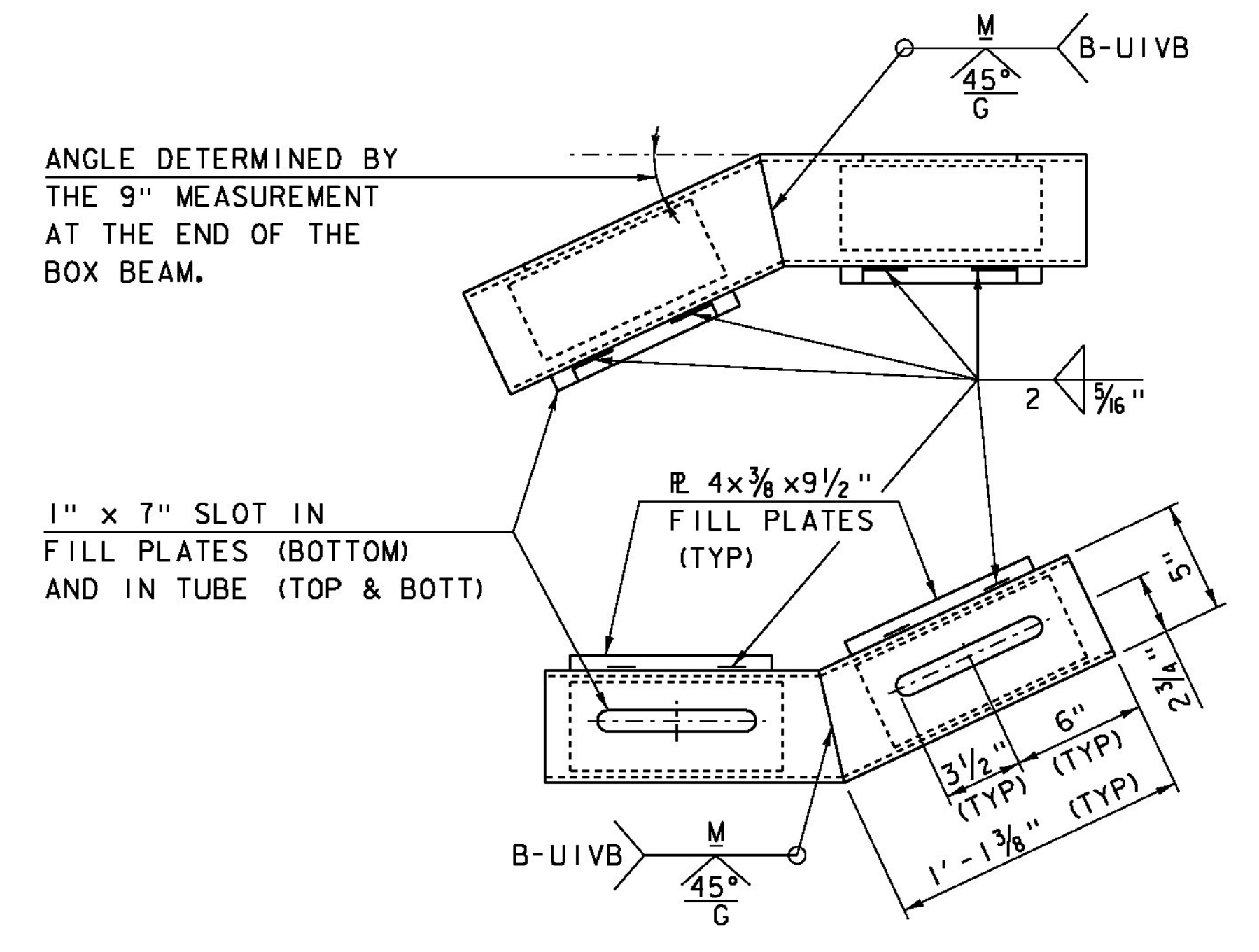
SPLICE DETAIL AT BOTTOM RAIL TURN BACK PLAN
NOT TO SCALE



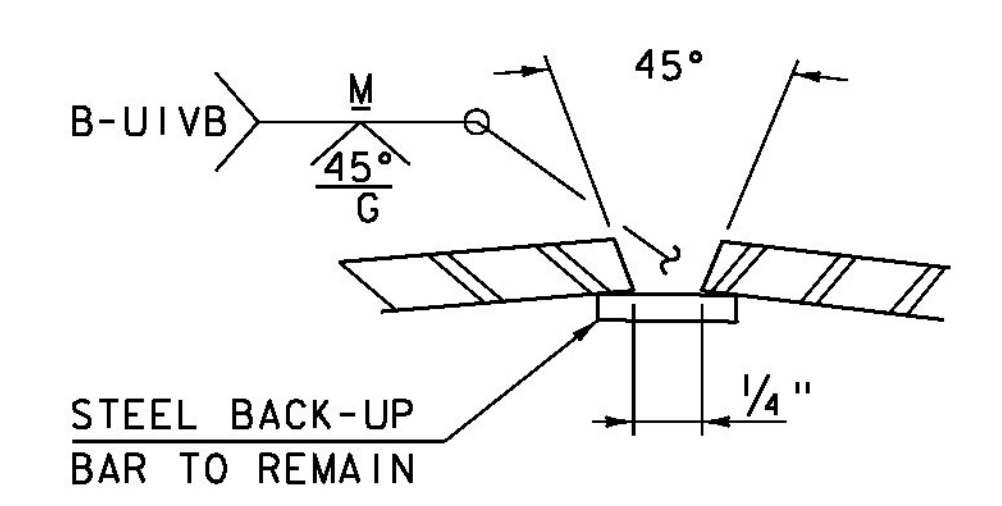
HEAVY POST ELEVATION
NOT TO SCALE

NOTES:

1. PROTRUSIONS CAUSED BY WELDING OR GALVANIZING ARE NOT PERMITTED ON THE ADJOINING SURFACES OF THE BOX BEAM RAILS, SPLICE TUBES AND FILL PLATES.
2. HOLES IN POST FOR LOWER RAIL MAY BE LOCATED AND DRILLED IN THE FIELD. IF SO, GALVANIZING SHALL BE REPAIRED PER SECTION 726.08.



SPLICE TUBE DETAIL FOR TURN BACK
NOT TO SCALE



WELD DETAIL FOR SPLICE TUBE
NOT TO SCALE

PROJECT NAME: CLARENDON	PLOT DATE: 10-SEP-2015
PROJECT NUMBER: BRO 1443(48)	DRAWN BY: S. COLEY
FILE NAME: s12j160ralldet.dgn	DESIGNED BY: J. GRIGAS
APPROACH RAIL DETAILS 2	CHECKED BY: G. LAROCHE
	SHEET 24 OF 59