

CONSTRUCT AGGREGATE SURFACE COURSE
 DRIVES W/ 5'-0" PAVED APRONS
 STA 11+12.00 LT - 45.00' WIDE
 STA 12+38.00 RT - 15.00' WIDE
 STA 13+00.00 LT - 28.00' WIDE

REMOVAL AND DISPOSAL OF GUARDRAIL
 STA 11+38.71 - 11+76.24 RT
 STA 11+61.18 - 11+73.59 LT
 STA 12+03.84 - 12+40.25 LT
 STA 12+05.83 - 12+18.60 RT

REMOVAL OF EXISTING DELINEATOR
 STA 11+46.19 LT

RELOCATE MAILBOX, SINGLE SUPPORT
 REMOVE FROM STA 11+06.00 RT (4)
 RELOCATE TO STA 10+20.00 RT (4)

18" OPTION PIPE
 STA 10+75.00 - 11+50.00

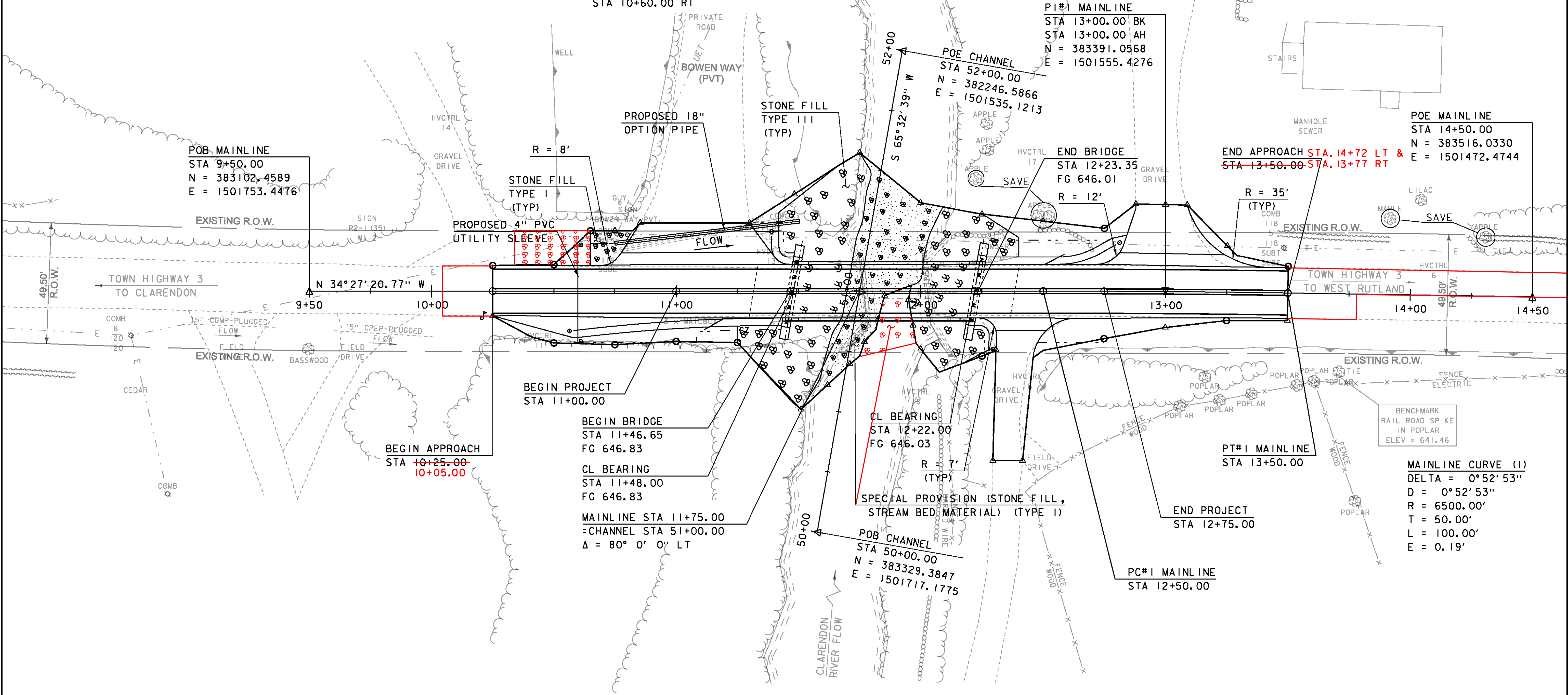
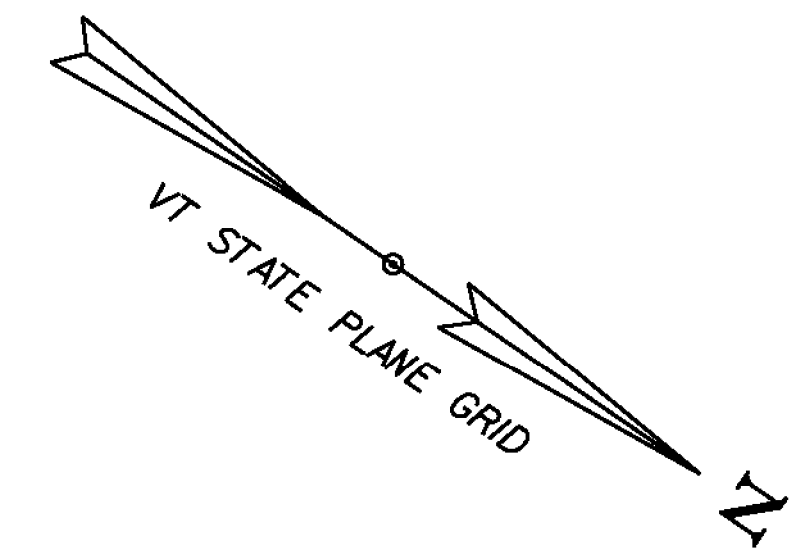
REMOVAL OF EXISTING CULVERT
 STA 10+75.00 - 11+50.00

SPECIAL PROVISION (REMOVE AND RELOCATE EXISTING STONE WALL)
 STA 12+12.71 - 12+35.25 LT
 STA 12+47.21 - 12+70.26 LT

REMOVING AND RESETTING PROPERTY MARKERS
 STA 11+71.00 LT
 N = 383271.2824
 E = 1501608.8904
 STA 12+12.50 RT
 N = 383332.7475
 E = 1501625.1234

4" SLEEVE FOR FUTURE WATERLINE
 STA 10+60.00

STEEL MARKER POST
 STA 10+60.00 LT
 STA 10+60.00 RT



LAYOUT SHEET

SCALE 1" = 20'-0"
 20 0 20

PROJECT NAME:	CLARENDON	FILE NAME:	sl2j160bdr.dgn	PLOT DATE:	08-OCT-2015
PROJECT NUMBER:	BRO 1443(48)	PROJECT LEADER:	K. HIGGINS	DRAWN BY:	K. FRIEDLAND
		DESIGNED BY:	J. GRIGAS	CHECKED BY:	G. LAROCHE
		LAYOUT SHEET		SHEET	14 OF 59