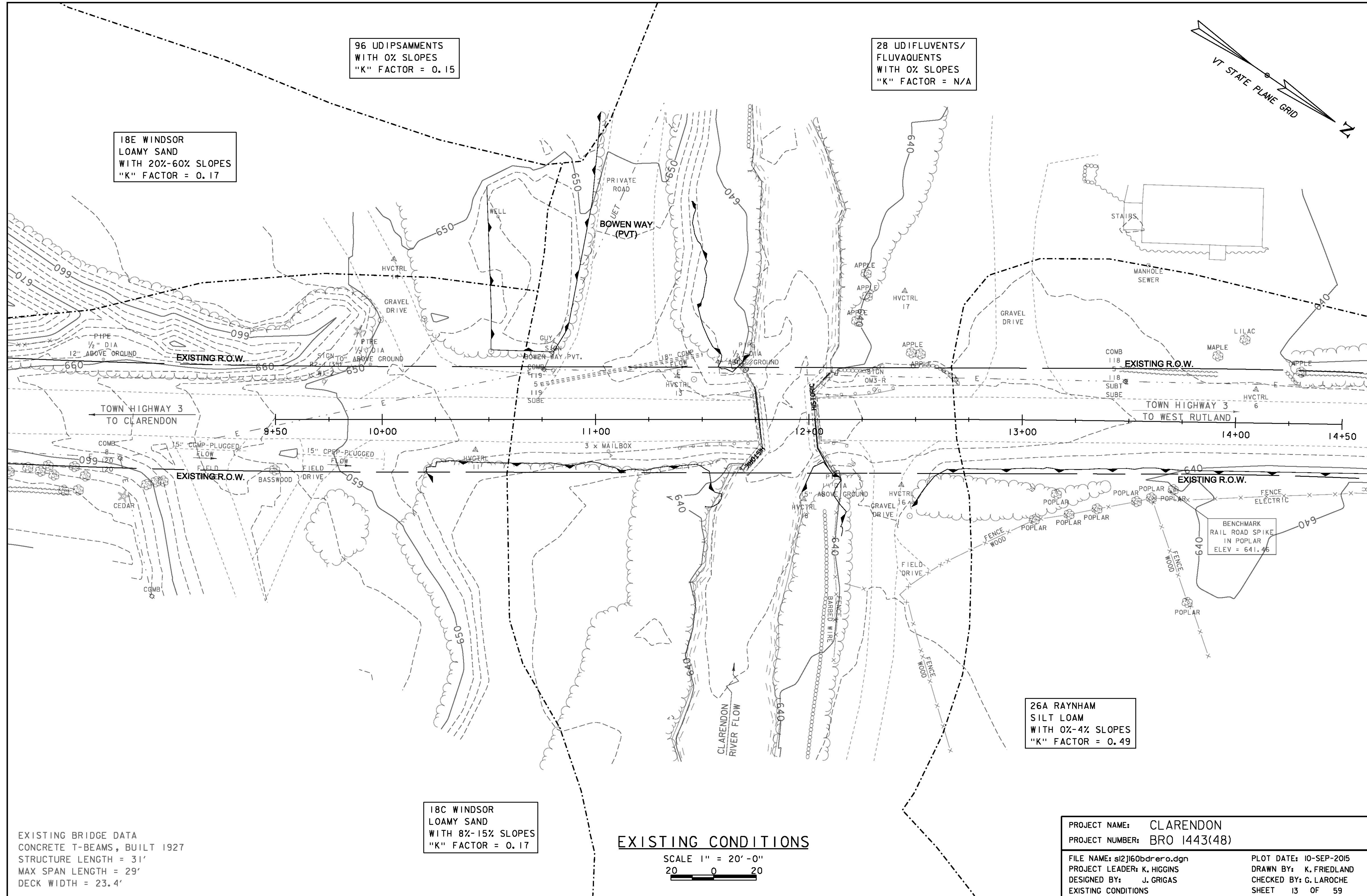


96 UDIPSAMMENTS  
WITH 0% SLOPES  
"K" FACTOR = 0.15

28 UDIFLUENTS/  
FLUVAQUENTS  
WITH 0% SLOPES  
"K" FACTOR = N/A

18E WINDSOR  
LOAMY SAND  
WITH 20%-60% SLOPES  
"K" FACTOR = 0.17



TOWN HIGHWAY 3  
TO CLARENDON

TOWN HIGHWAY 3  
TO WEST RUTLAND

EXISTING R.O.W.

EXISTING R.O.W.

EXISTING R.O.W.

EXISTING R.O.W.

BENCHMARK  
RAIL ROAD SPIKE  
IN POPLAR  
ELEV = 641.46

26A RAYNHAM  
SILT LOAM  
WITH 0%-4% SLOPES  
"K" FACTOR = 0.49

18C WINDSOR  
LOAMY SAND  
WITH 8%-15% SLOPES  
"K" FACTOR = 0.17

EXISTING BRIDGE DATA  
CONCRETE T-BEAMS, BUILT 1927  
STRUCTURE LENGTH = 31'  
MAX SPAN LENGTH = 29'  
DECK WIDTH = 23.4'

**EXISTING CONDITIONS**

SCALE 1" = 20'-0"  
20 0 20

|                               |                        |
|-------------------------------|------------------------|
| PROJECT NAME: CLARENDON       |                        |
| PROJECT NUMBER: BRO 1443(48)  |                        |
| FILE NAME: st2j160bdrer.o.dgn | PLOT DATE: 10-SEP-2015 |
| PROJECT LEADER: K. HIGGINS    | DRAWN BY: K. FRIEDLAND |
| DESIGNED BY: J. GRIGAS        | CHECKED BY: G. LAROCHE |
| EXISTING CONDITIONS           | SHEET 13 OF 59         |