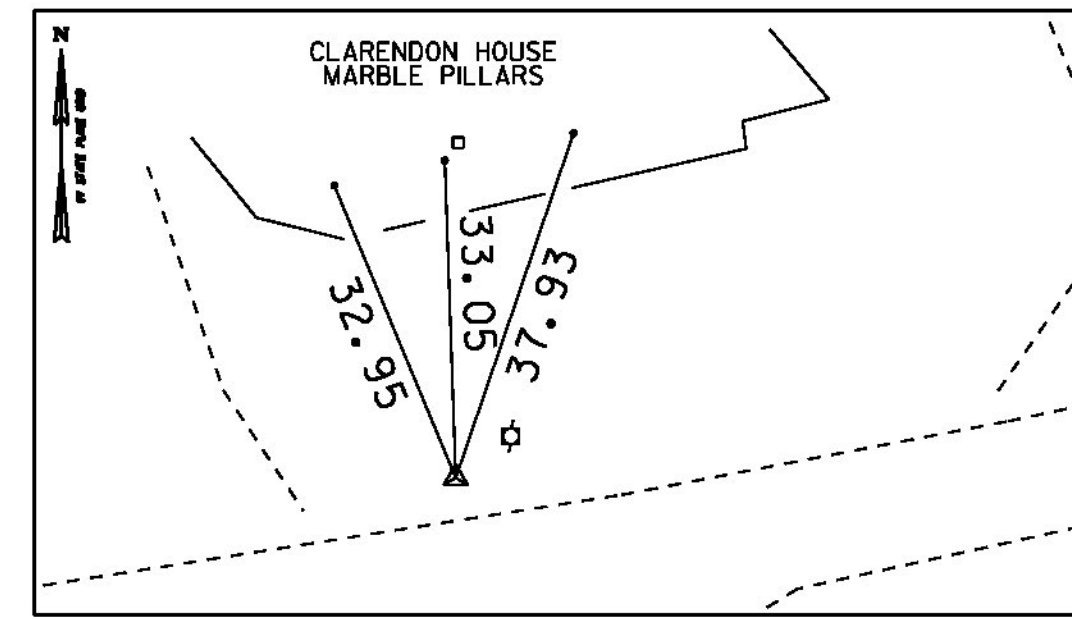
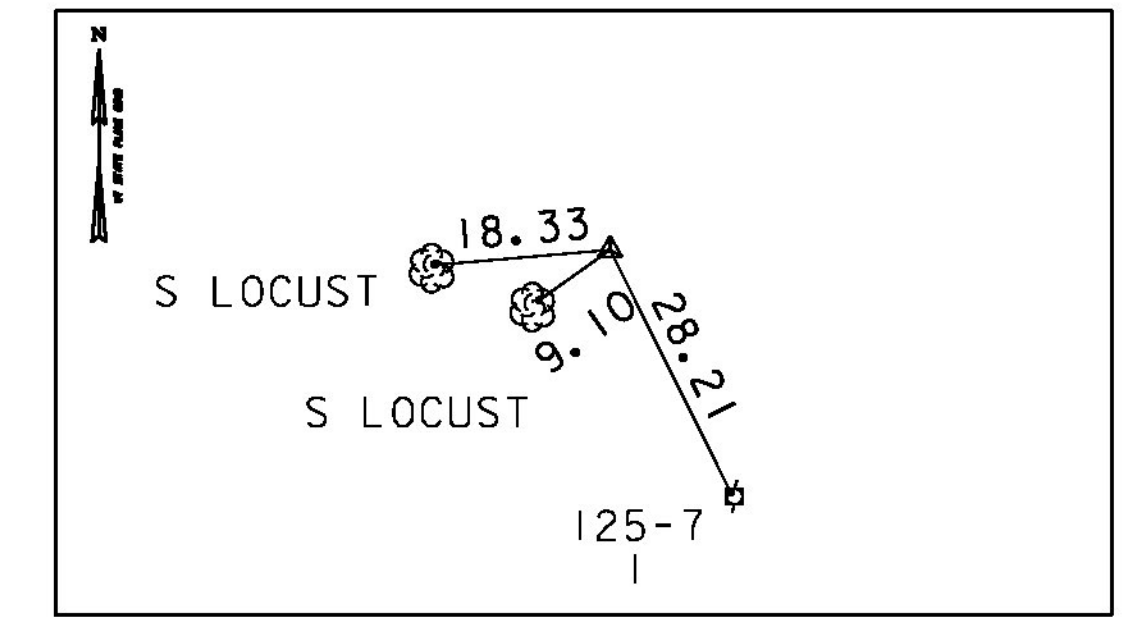


GPS CONTROL POINTS

HVCTRL #1
 SPRINGS TEMP 1
 NORTH = 382442.365
 EAST = 1502188.866
 ELEV. = 691.040



HVCTRL #2
 SPRINGS TEMP 2
 NORTH = 381427.561
 EAST = 1502479.265
 ELEV. = 680.440



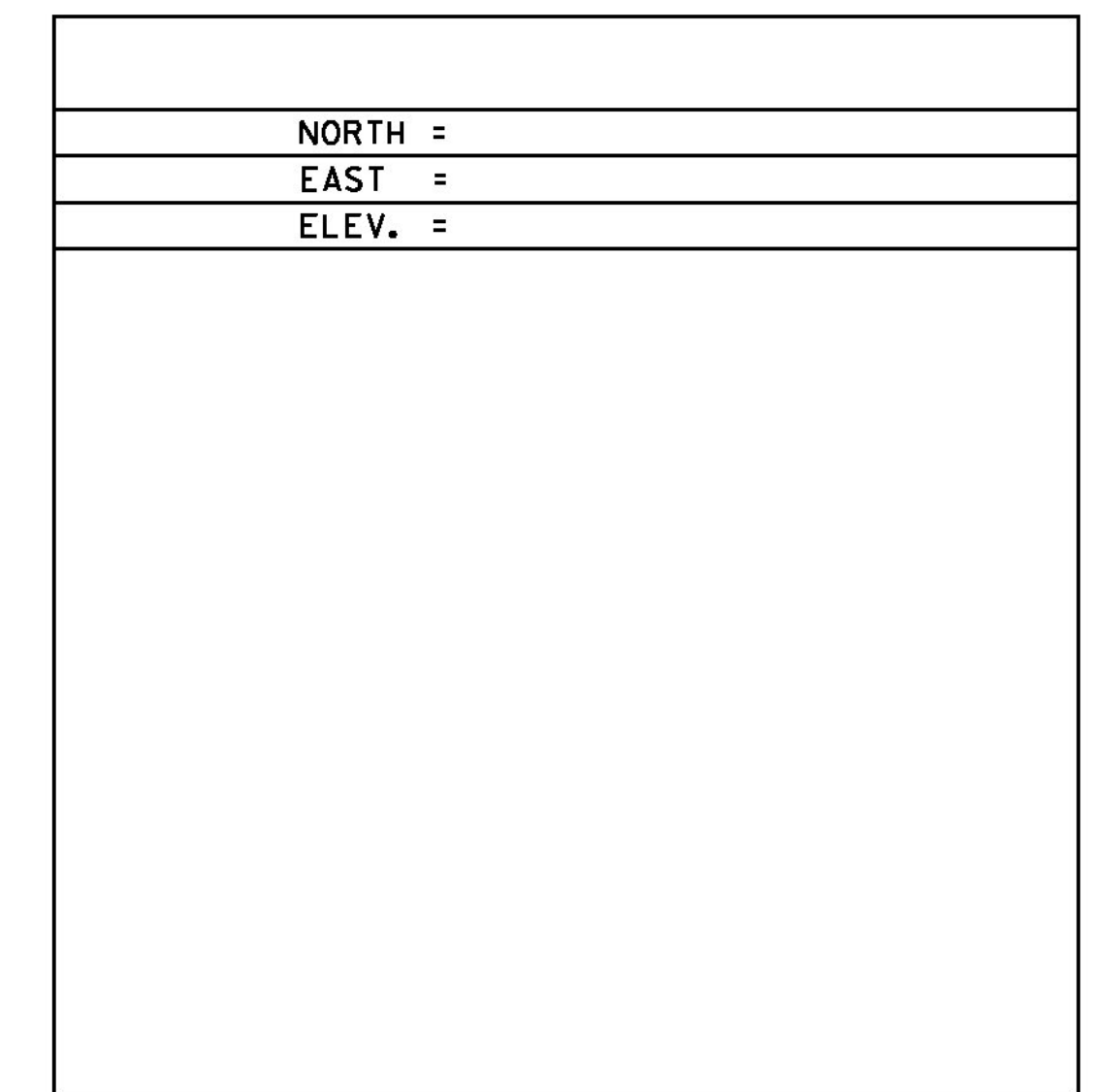
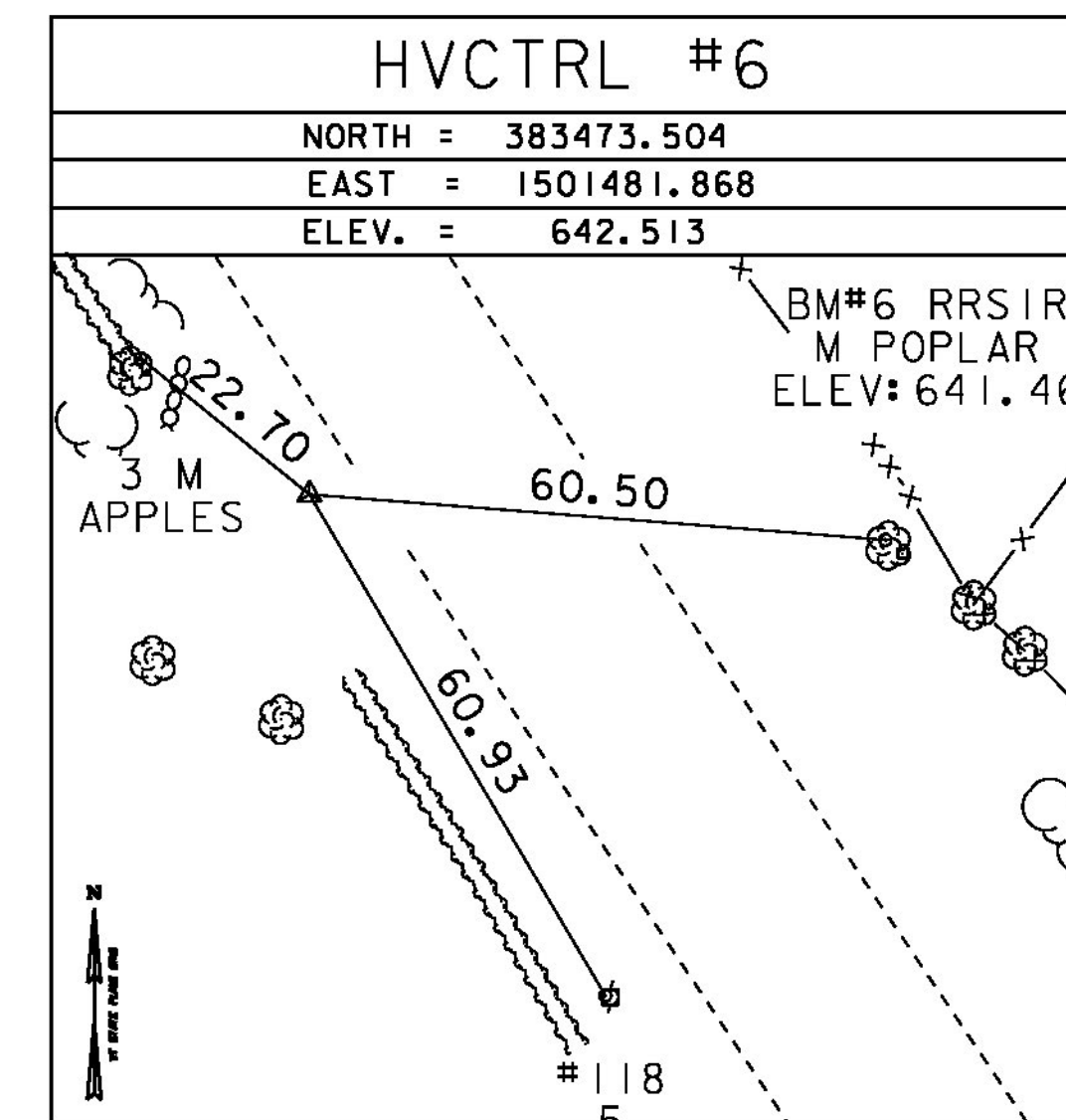
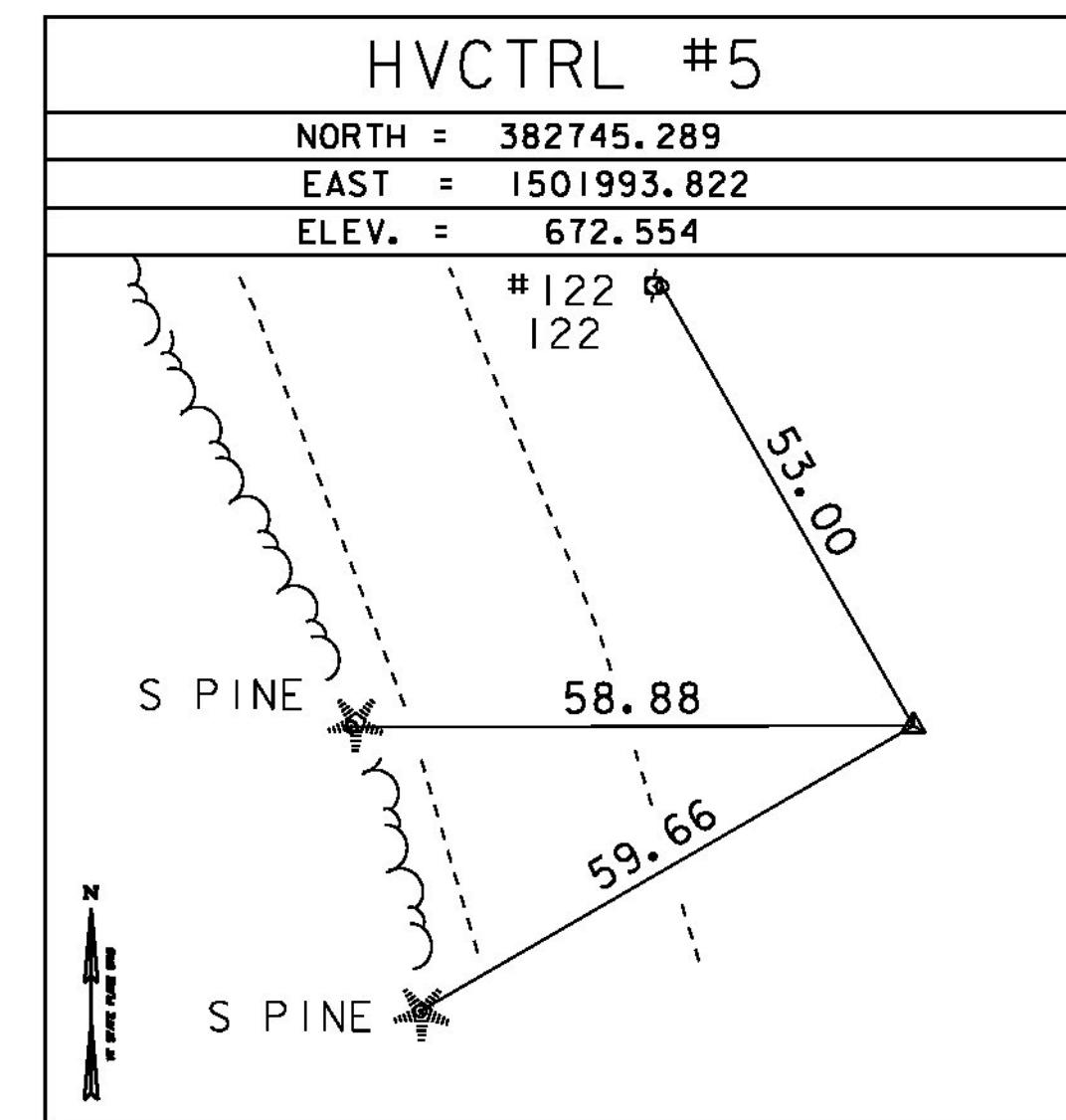
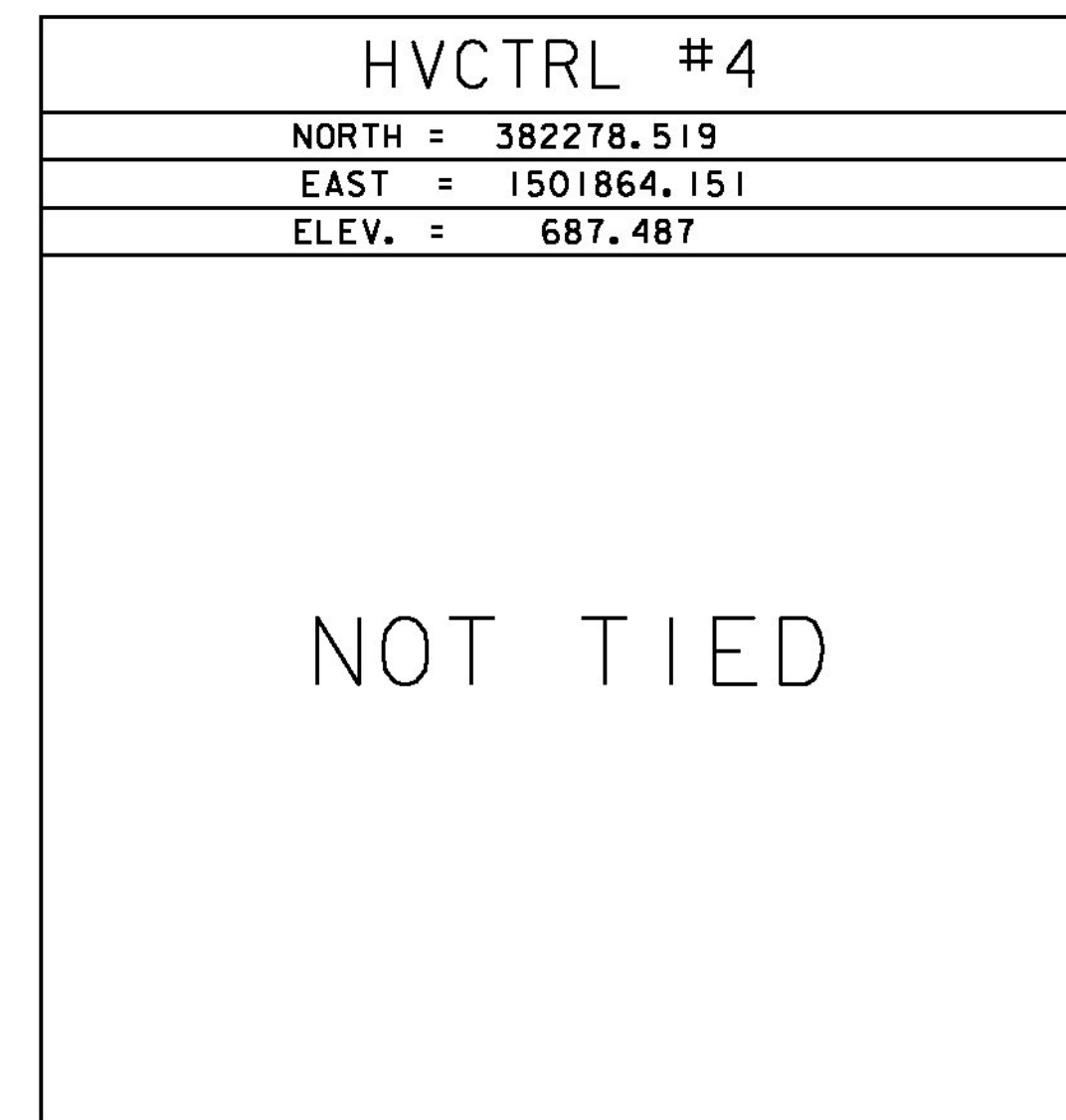
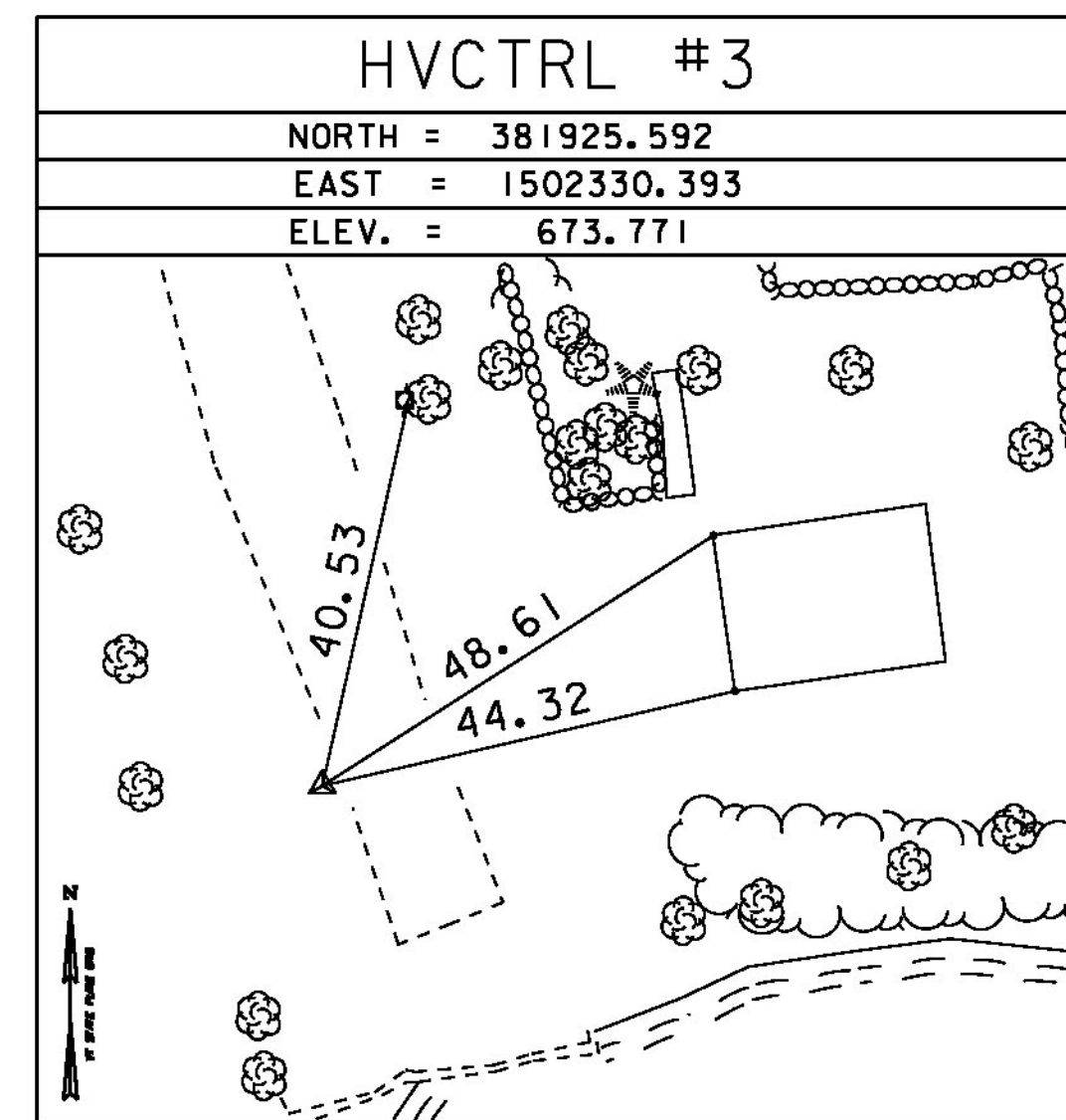
LOCATION - CLARENDON SPRINGS, 3 MILES SOUTH OF WEST RUTLAND

FROM THE JUNCTION OF ROUTES 4A AND 133 IN WEST RUTLAND, TAKE RTE 133 SOUTH FOR 2.25 MI TO A "Y" INTERSECTION. GO LEFT ON A PAVED ROAD FOR 1.2 MI. TO A GRAVEL ROAD LEFT (EAST). GO LEFT (EAST) ON THE GRAVEL ROAD FOR 50 METERS TO AN INTERSECTION AND THE OLD CLARENDON SPRINGS HOTEL AND THE MARK ON THE LEFT. THE MARK IS A REBAR WITH A DRILL HOLE IN IT, LEFT 0.3 M BELOW GROUND LEVEL. THE MARK IS 12.2 M SOUTH OF THE SW CORNER OF A 3 1/2 STORY BRICK BUILDING, 16.0 M SW OF THE SE CORNER OF A 3 1/2 STORY BRICK BUILDING, 2.1 M SW OF POLE # 125-2/8-10/2.

LOCATION - CLARENDON SPRINGS, 3 MILES SOUTH OF WEST RUTLAND

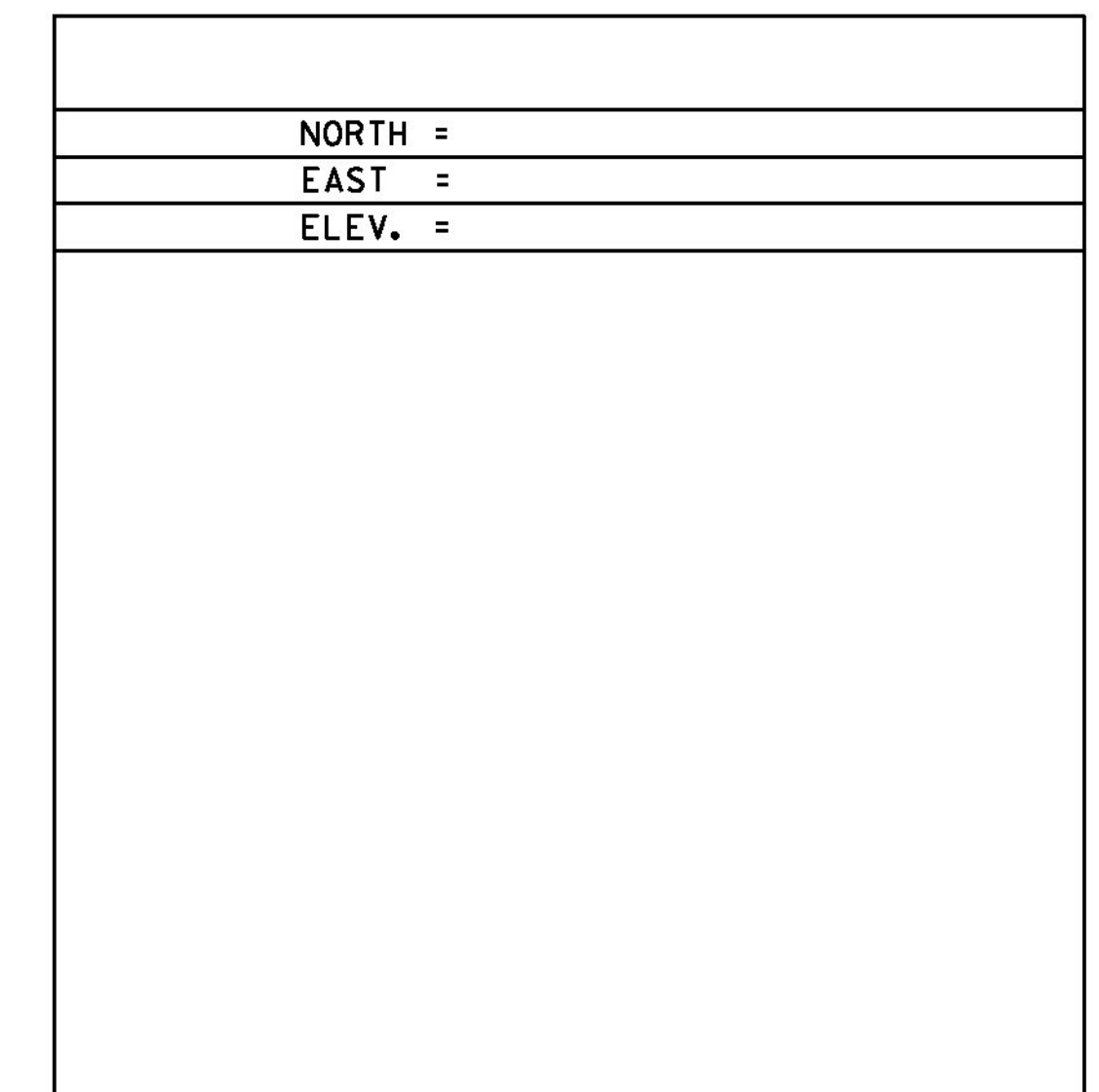
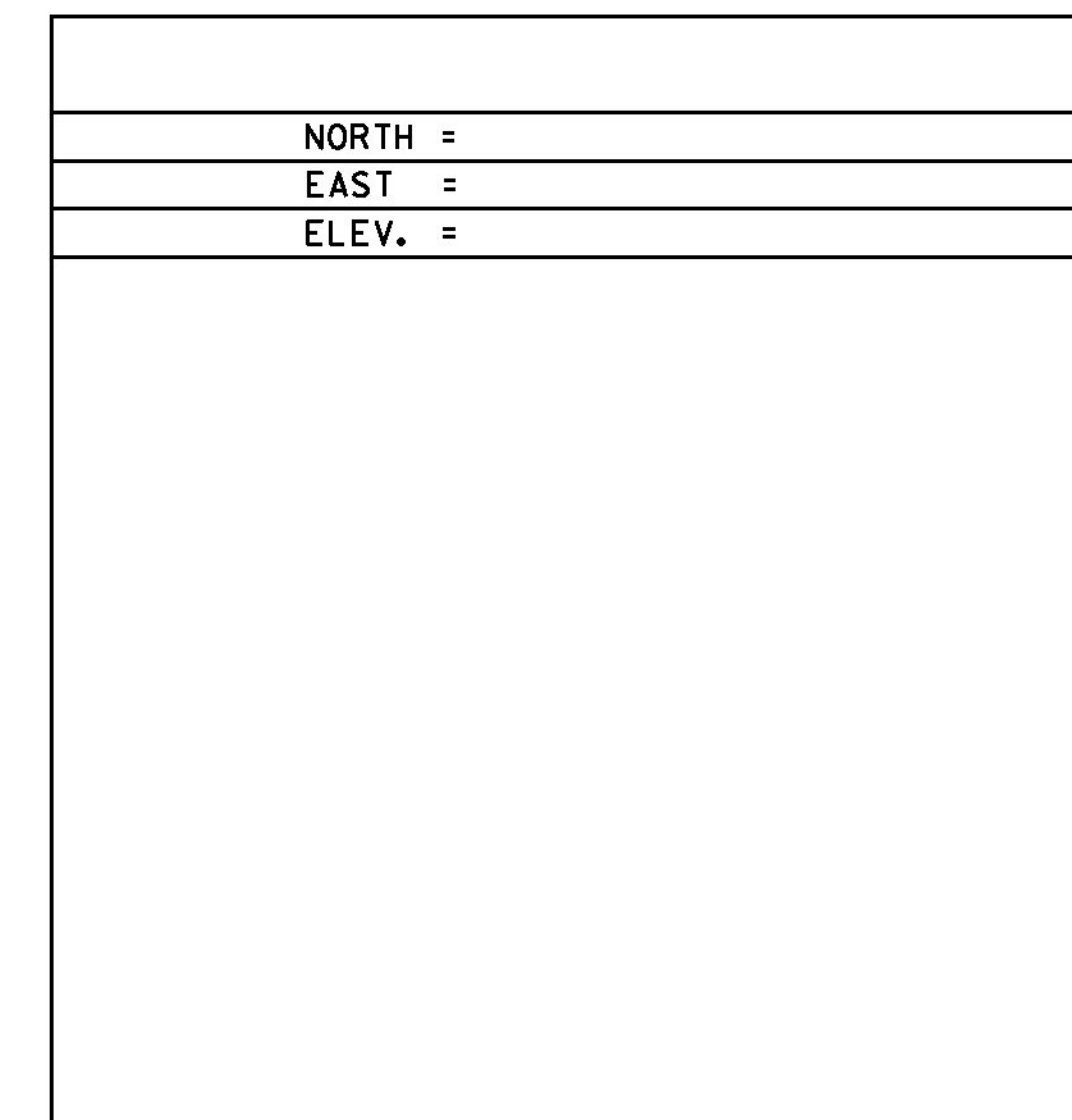
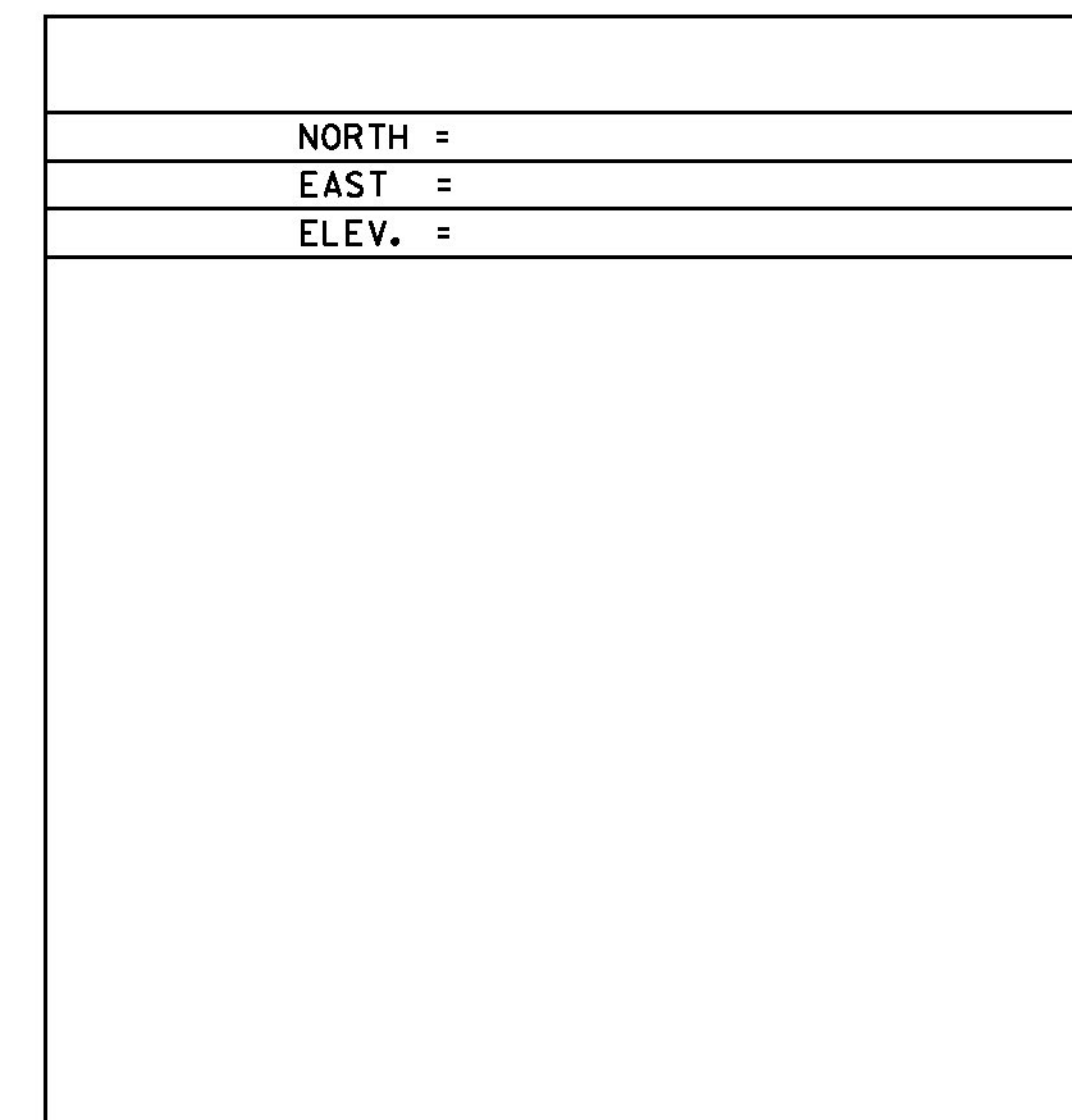
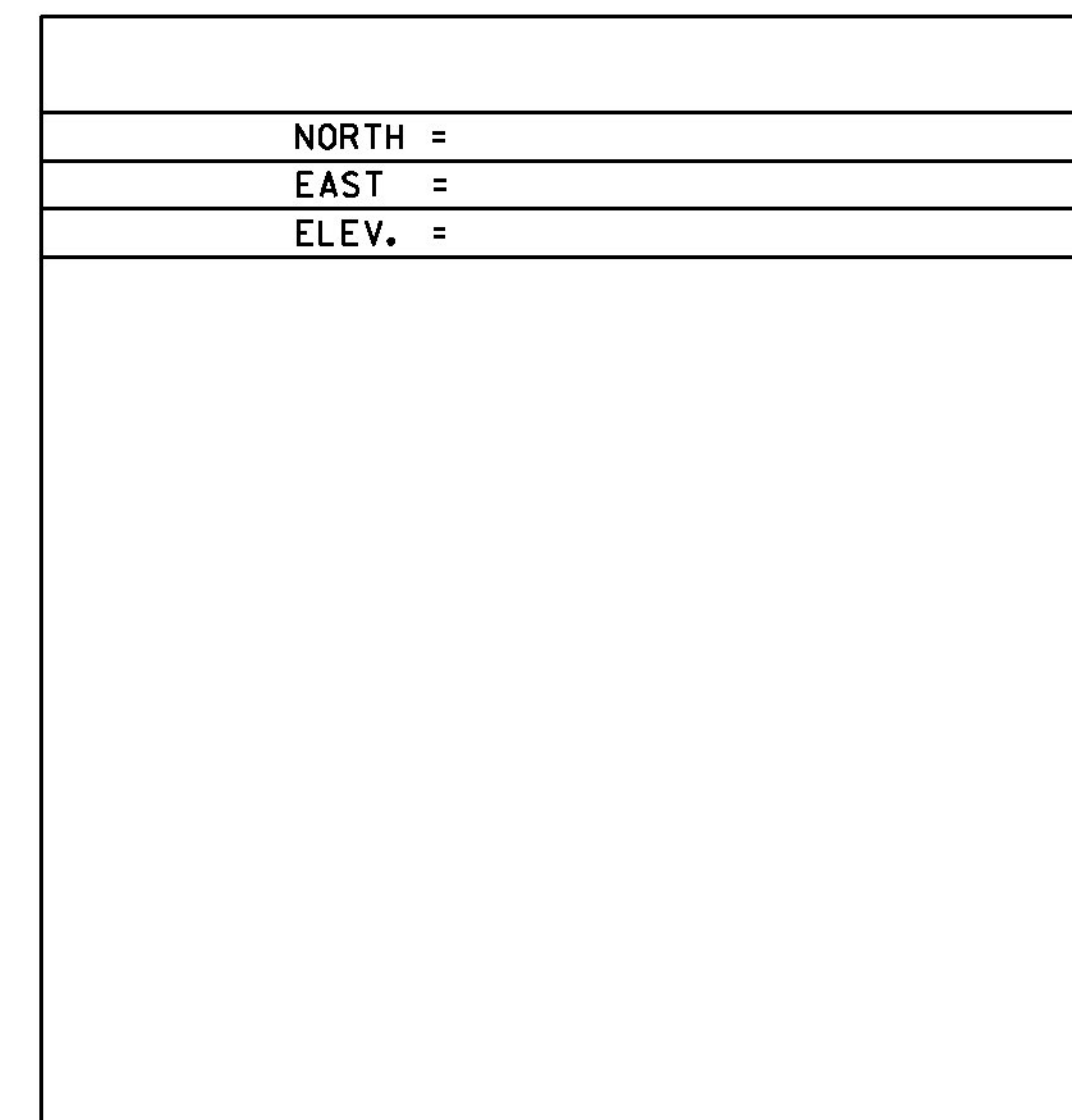
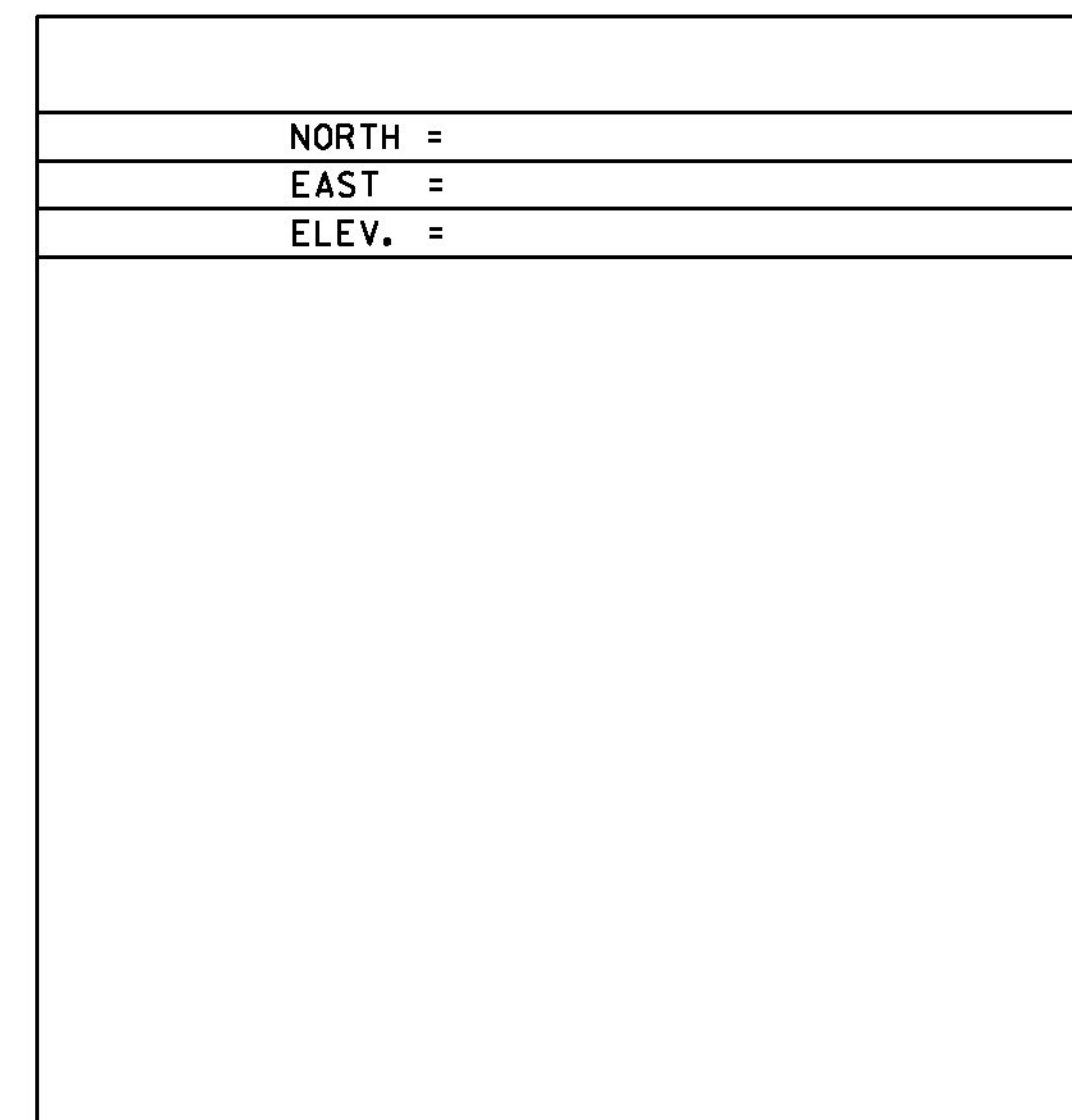
FROM THE JUNCTION OF ROUTES 4A AND 133 IN WEST RUTLAND, TAKE RTE 133 SOUTH FOR 2.25 MI TO A "Y" INTERSECTION. GO LEFT ON A PAVED ROAD FOR 1.2 MI. TO A GRAVEL ROAD LEFT (EAST). GO LEFT (EAST) ON THE GRAVEL ROAD FOR 50 METERS TO AN INTERSECTION AND THE OLD CLARENDON SPRINGS HOTEL AND THE MARK ON THE LEFT. THE MARK IS A REBAR WITH A DRILL HOLE IN IT, LEFT 0.3 M BELOW GROUND LEVEL. THE MARK IS 8.5 M SOUTH OF POLE # 125-7/1, 3.2 M WEST OF THE CENTERLINE OF A GRAVEL ROAD, 8.7 M SE OF THE CORNER OF A WOOD AND WIRE FENCE.

TRAVERSE TIES



*MAIN TRAVERSE COMPLETED 1/12/1996 BY L.ORVIS [95J286] SECONDARY TRAVERSE 3/15/2012 BY L.ORVIS P.C & G.HITCHCOCK

ALIGNMENT TIES



DATUM
 VERTICAL NAVD 88
 HORIZONTAL NAD 83 (92)
 ADJUSTMENT COMPASS

PROJECT NAME: CLARENDON
 PROJECT NUMBER: BHO 1443 (48)
 FILE NAME: x12J160+1.dgn
 PROJECT LEADER: K. HIGGINS
 DESIGNED BY: VTRAN
 TIE SHEET
 PLOT DATE: 10-SEP-2015
 DRAWN BY: G. HITCHCOCK
 CHECKED BY: P. BEYOR
 SHEET 12 OF 59