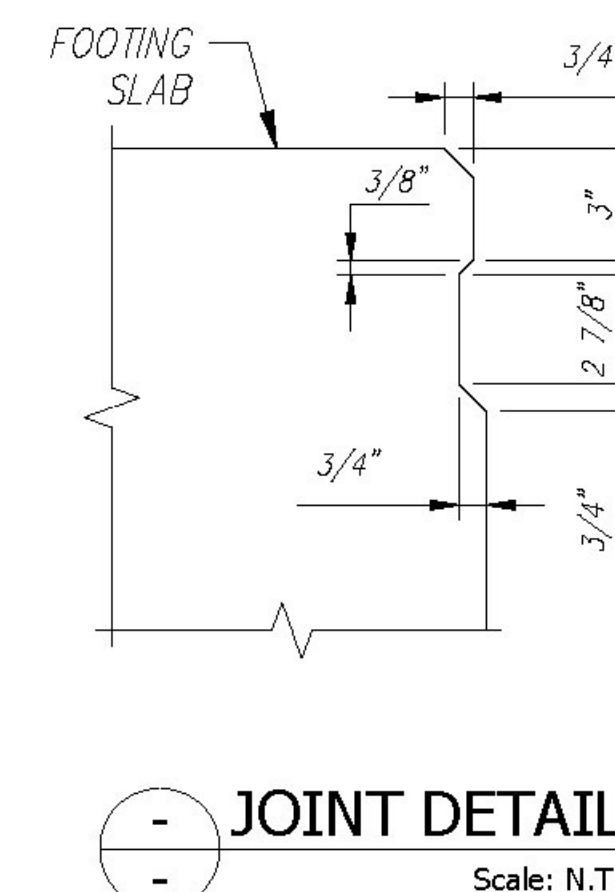
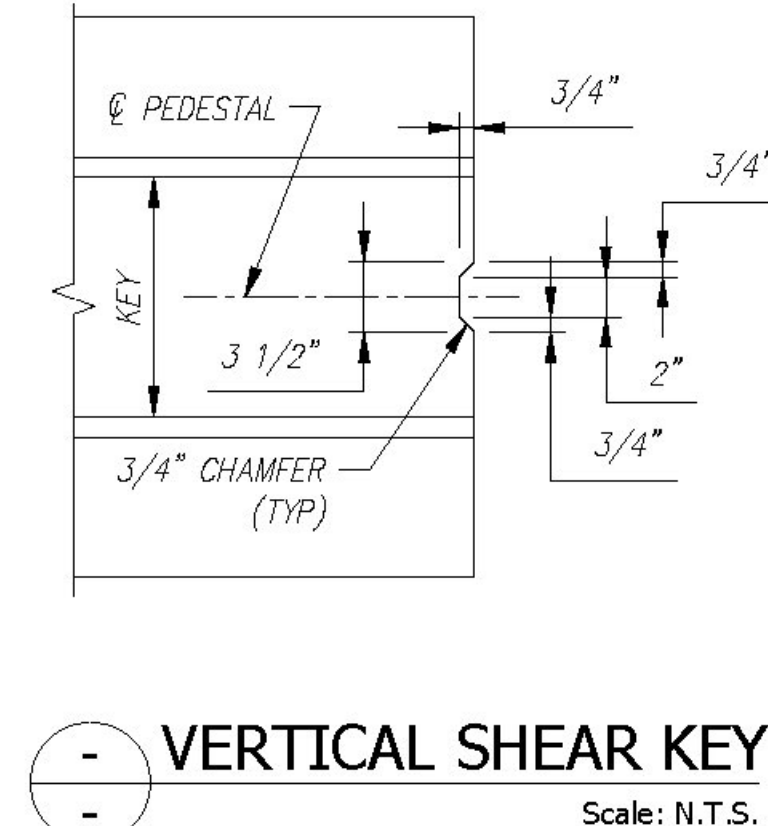
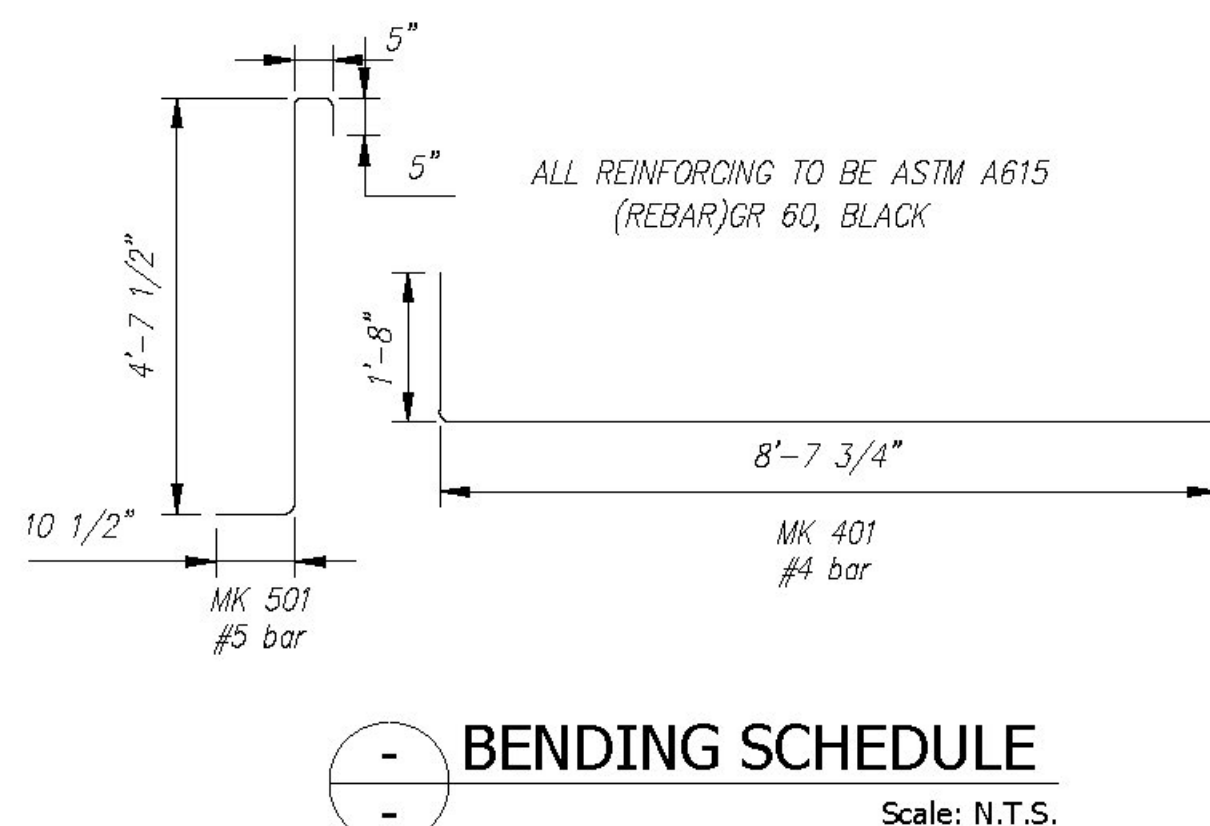
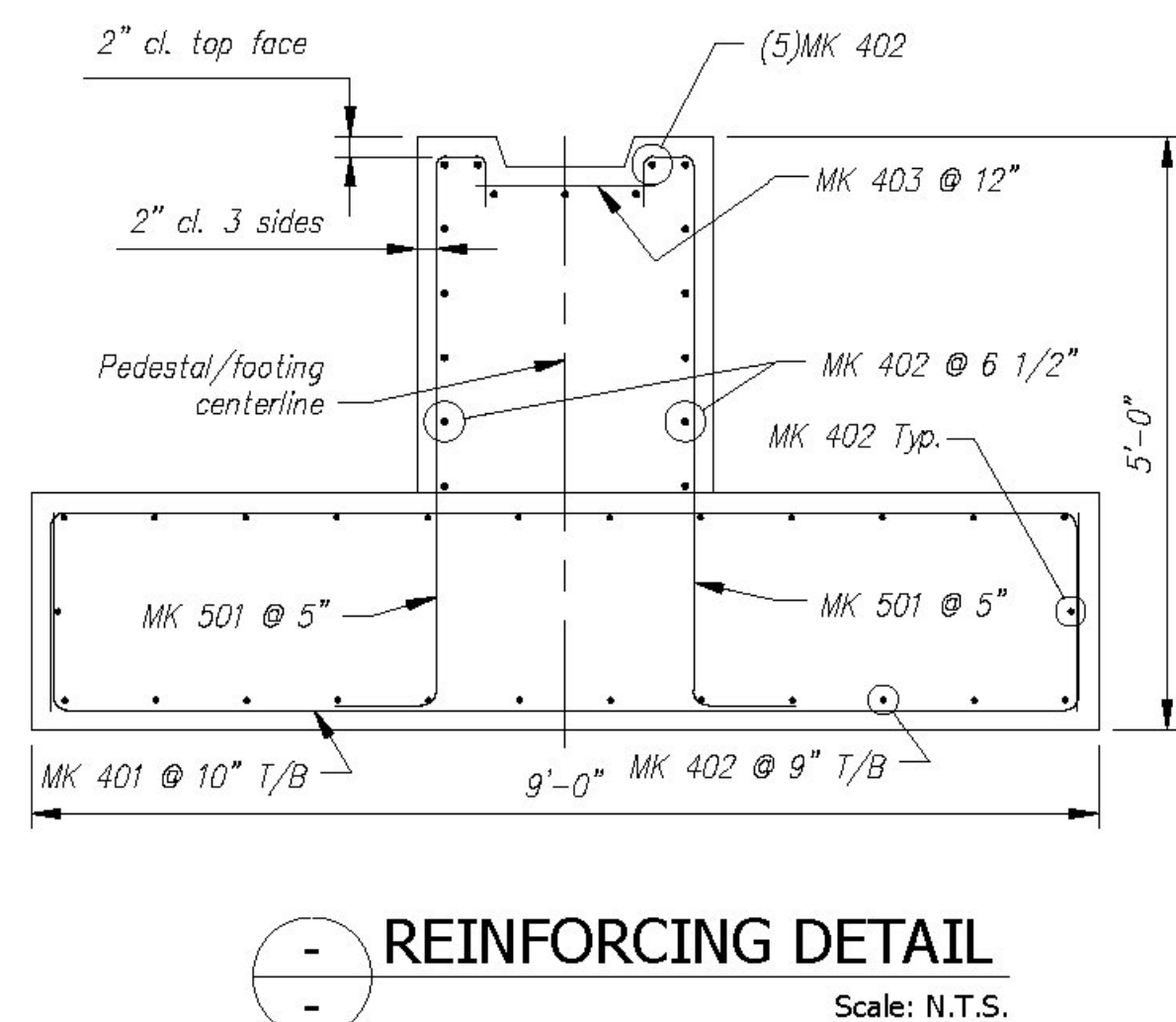
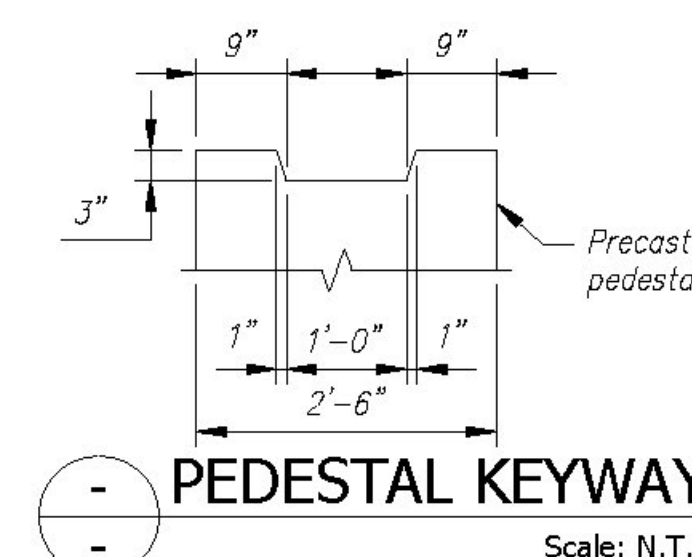
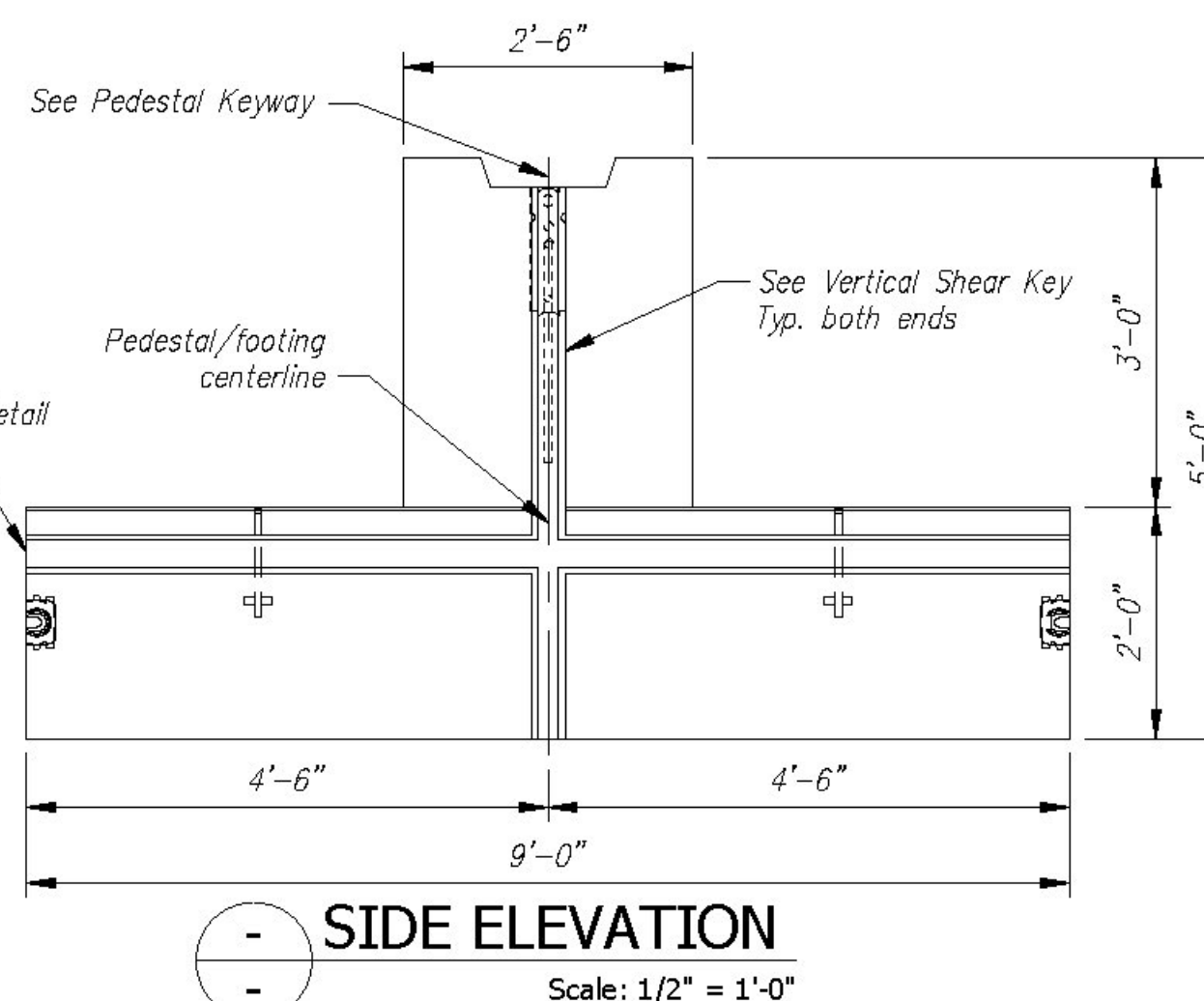
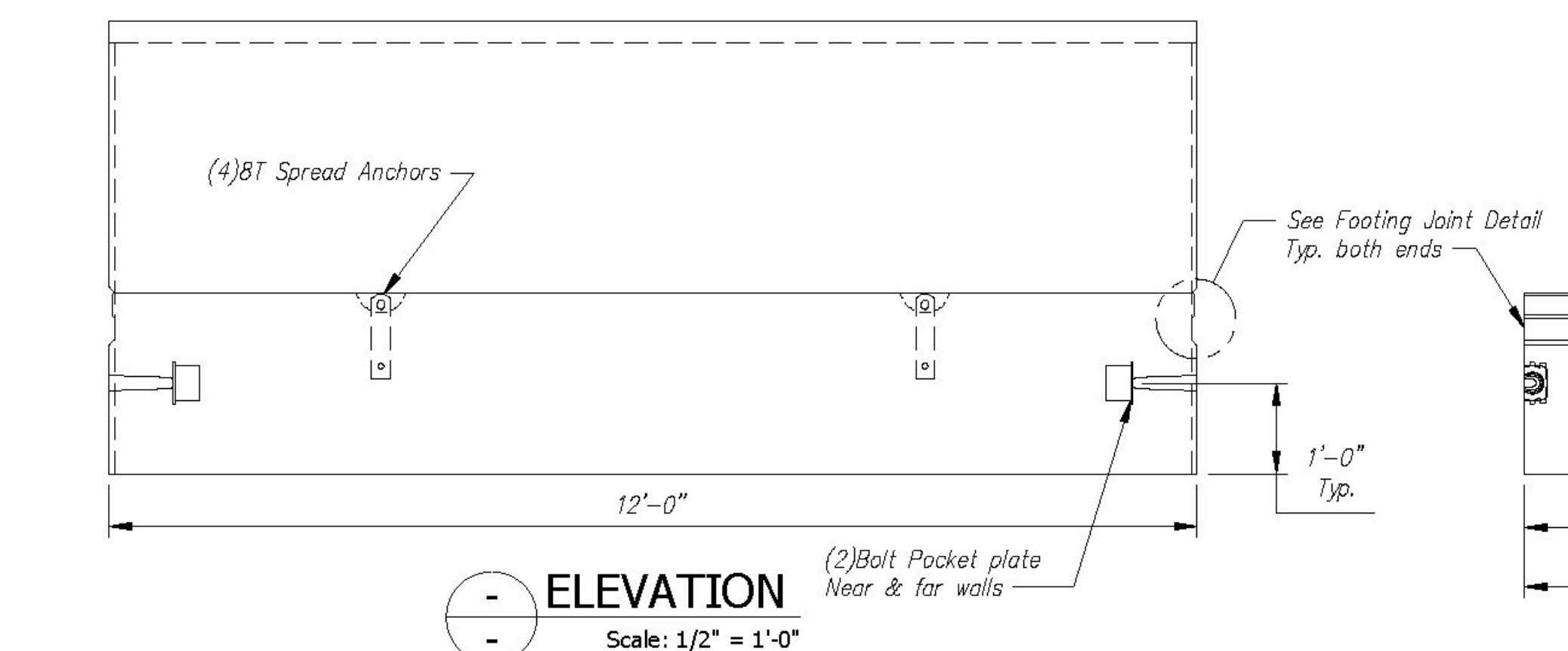
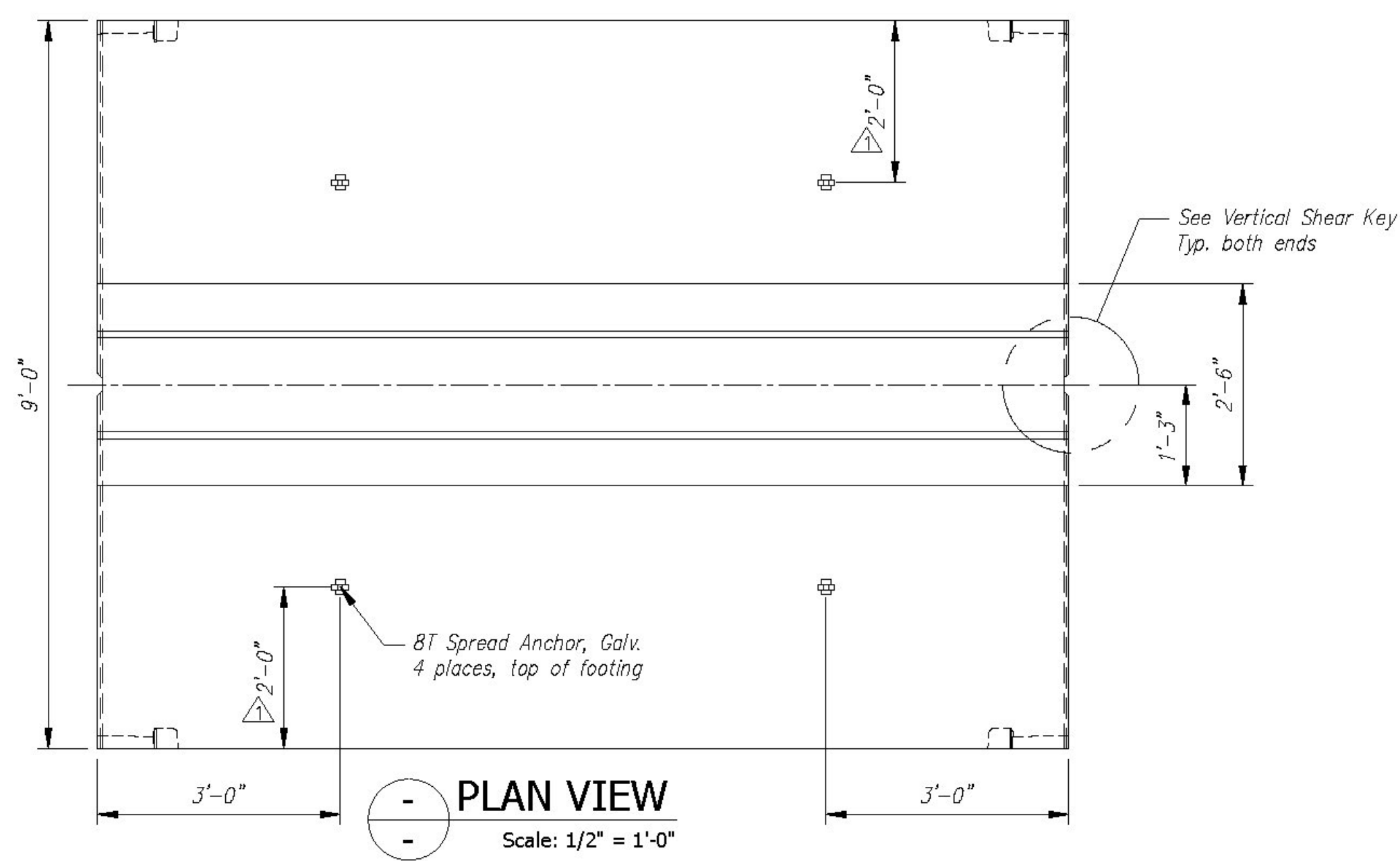


QUANTITY = 1  
WEIGHT = 22.66 TONS

| FOOTING SLAB - F5 - BILL OF MATERIALS / EMBEDS     |   |      |             |
|--|---|------|-------------|
| CSI ID#  | DESCRIPTION                                 | QTY  | UM COMMENTS |
| EM-00078   | 8T SPREAD ANCHOR #FL119/P94                 | 4    | EA          |
| EM-00125   | BOLT POCKET PLATE (GALVANIZED)              | 4    | EA          |
| RM-00013   | REBAR #4 BLACK-GR 60                        | 445  | LB          |
| RM-00015   | REBAR #5 BLACK-GR 60 40'                    | 383  | LB          |
| MX-FA5000SC30                                      | MX DESIGN - FLY ASH 5000 SELF CONSOLIDATING | 7.86 | CY          |
| FOOTING PEDESTAL - F5 - BILL OF MATERIALS / EMBEDS |   |      |             |
| RM-00013   | REBAR #4 BLACK-GR 60                        | 147  | LB          |
| MX-FA5000SC30                                      | MX DESIGN - FLY ASH 5000 SELF CONSOLIDATING | 3.33 | CY          |

| Fig. Slab - F5 Rebar Schedule |     |          |  |
|-------------------------------|-----|----------|--|
| MK                            | QTY | LENGTH   |  |
| 401 #4                        | 30  | 12' - 0" |  |
| 402 #4                        | 26  | 11' - 9" |  |
| 501 #5                        | 58  | 6' - 4"  |  |

| Fig. Pedestal-F5 Rebar Schedule |     |          |  |
|---------------------------------|-----|----------|--|
| MK                              | QTY | LENGTH   |  |
| 402 #4                          | 17  | 11' - 9" |  |
| 403 #4                          | 12  | 1' - 8"  |  |



Vermont Agency of Transportation  
**RECEIVED**  
CK'D BY CLB OK'D BY HIS  
July 22, 2015  
RESUBMIT NO Approved  
BY C. CARLSON DATE 07/23/15

| Rev. | Date      | DESCRIPTION   | REVISIONS |
|------|-----------|---|-----------|
| 10   |           |   |           |
| 9    |           |   |           |
| 8    |           |   |           |
| 7    |           |   |           |
| 6    |           |   |           |
| 5    |           |   |           |
| 4    |           |   |           |
| 3    |           |   |           |
| 2    |           |   |           |
| 1    | 14MAY2015 | REVISED PER CUSTOMER REVIEW, REVISED ANCHOR LOCATIONS |           |

Contractor is to verify that all information shown on drawings has been thoroughly checked, complies with the contract documents and is adequate to meet the field conditions. Some dimensions and details may differ from those shown on drawings. The contractor shall be responsible for the design process. Approval of this drawing indicates that the contractor, from the contract documents has been reviewed and found to be acceptable. Production will not commence until receipt of signed, approved shop drawings.

This drawing contains information proprietary to CONCRETE SYSTEMS, INC. This drawing is disclosed with the understanding that it will be retained in confidence and not be used for any other project without the written consent of CONCRETE SYSTEMS, INC. It is understood that no reproduction of this drawing is authorized without permission from CONCRETE SYSTEMS, INC. and that it will be returned to CONCRETE SYSTEMS, INC. upon request.

This drawing is based upon information provided from the following documents and/or sources:  
 Engineer: STATE OF VT/AOT PROGRAM DEVELOPMENT  
 Project No: \_\_\_\_\_  
 Drawings: STATE OF VT/AOT PROPOSED IMPROVEMENT BRIDGE PROJECT, TOWN OF RICHFORD SHEETS 1,2,4,22,23,24 OF 36  
 Specifications: STANDARD SPECIFICATIONS FOR CONSTRUCTION DATED 2011  
 Other: \_\_\_\_\_

STATE AGENCY  
VTTrans

**CSI**  
Concrete Systems Inc.  
9 Commercial St., Hudson, NH, 03051  
Phone 603-889-4163  
Fax 603-889-2417

Drawn By: R. YEAGER Date: 16APR2015  
 Reviewed By: B. KOLAWOLE Date: \_\_\_\_\_  
 Approved By: C. VICK Date: 17JUN2015

G.W. TATRO CONSTRUCTION, INC.  
VT/AOT BRIDGE REPLACEMENT - ROAD IMPROVEMENT  
RICHFORD, VT.

SHOP DRAWING F5  
C22312-F5

Quantity: 2 Project No: BRFO30229 SHEET 1.3 OF 14