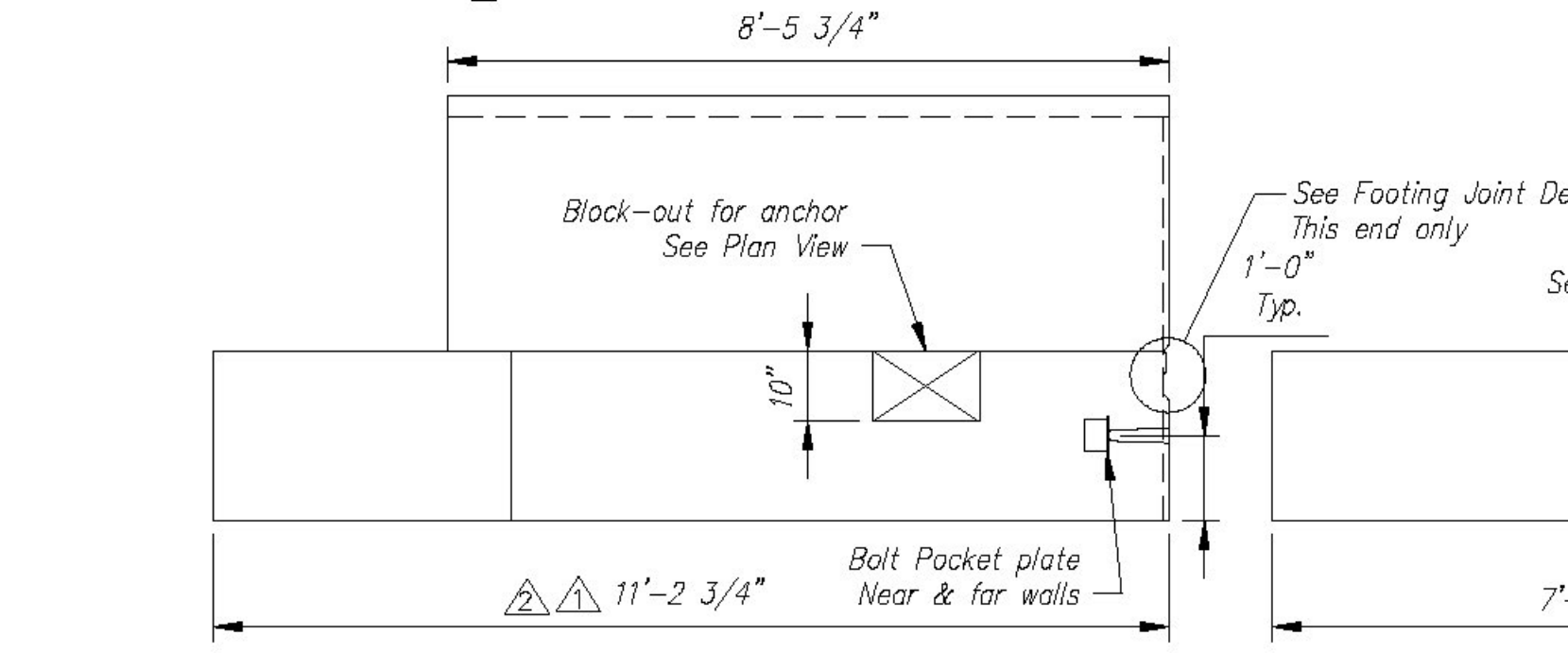
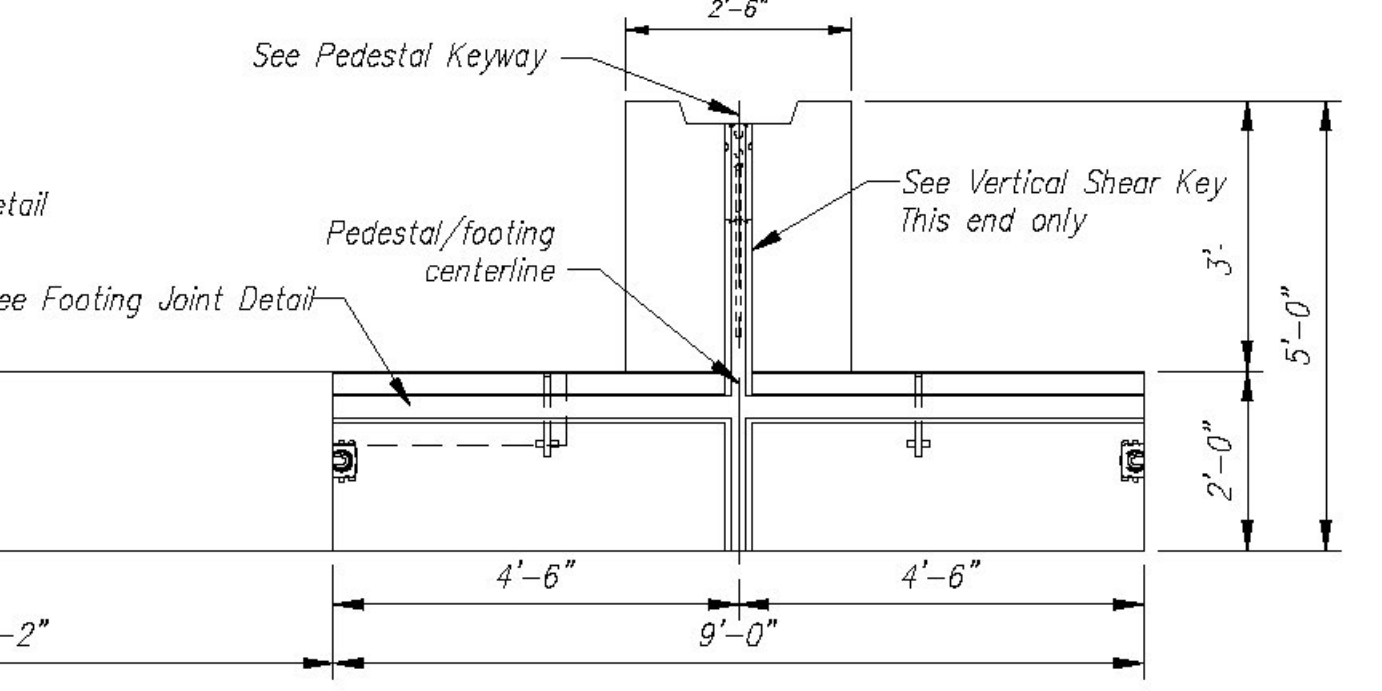


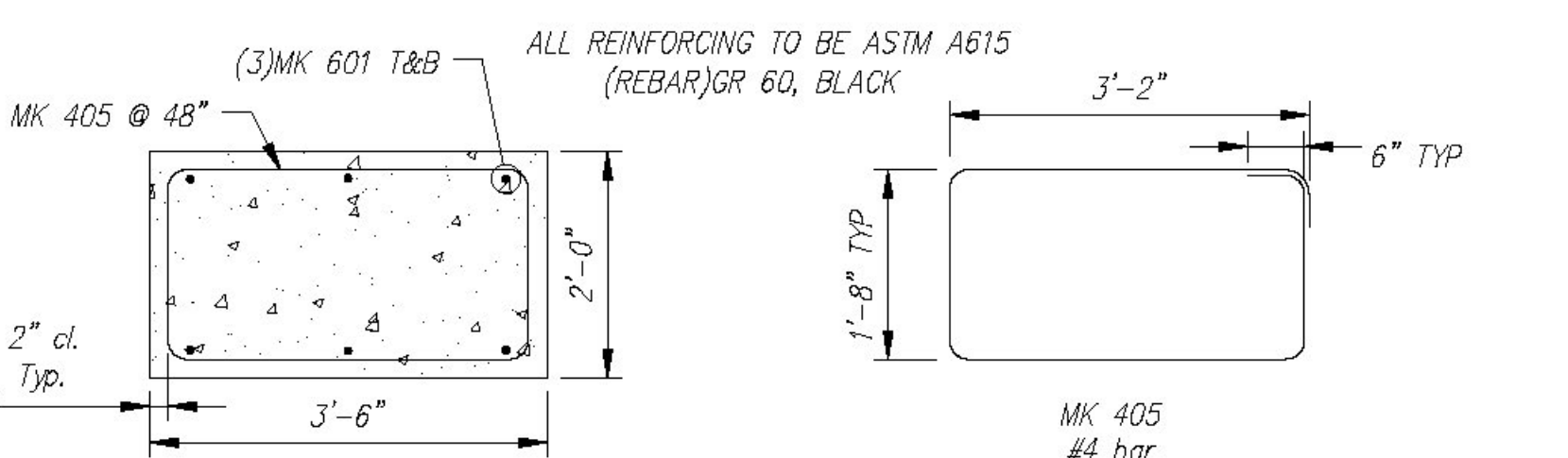
PLAN VIEW
Scale: 3/8" = 1'-0"



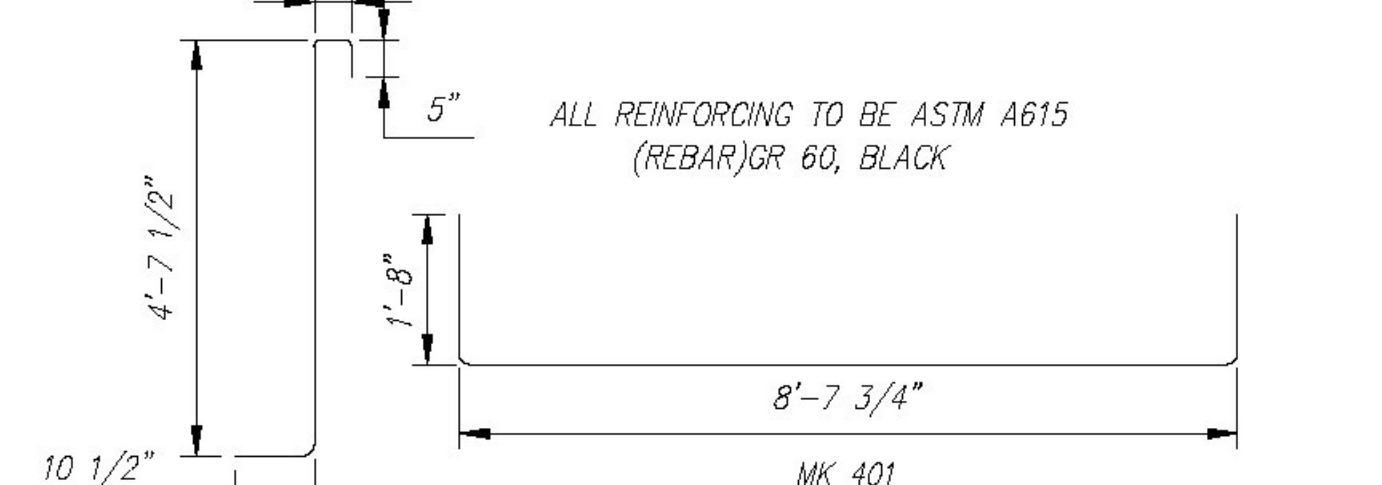
ELEVATION
Scale: 3/8" = 1'-0"



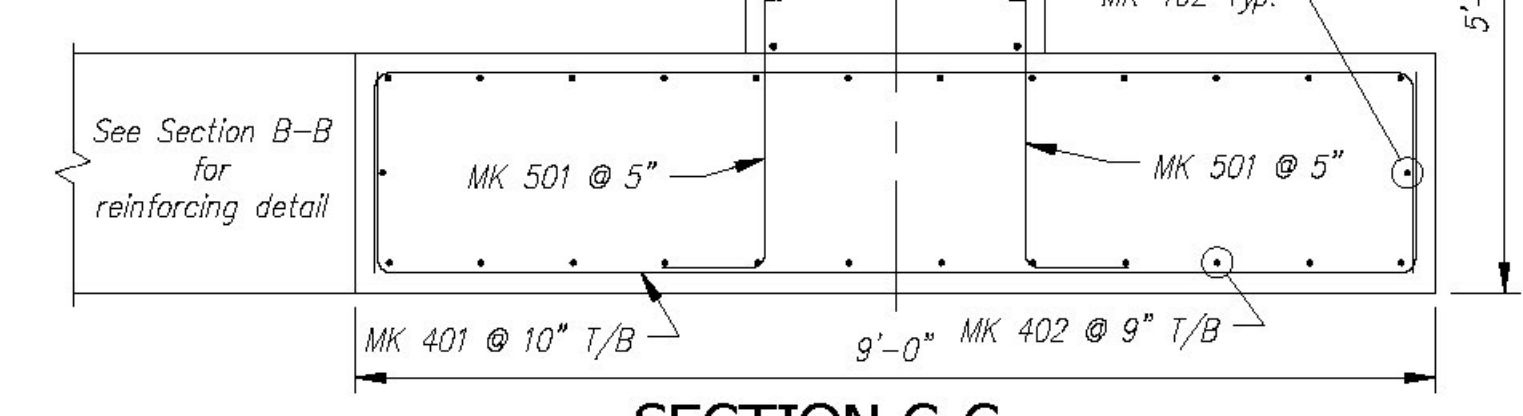
ELEVATION A-A
Scale: 3/8" = 1'-0"



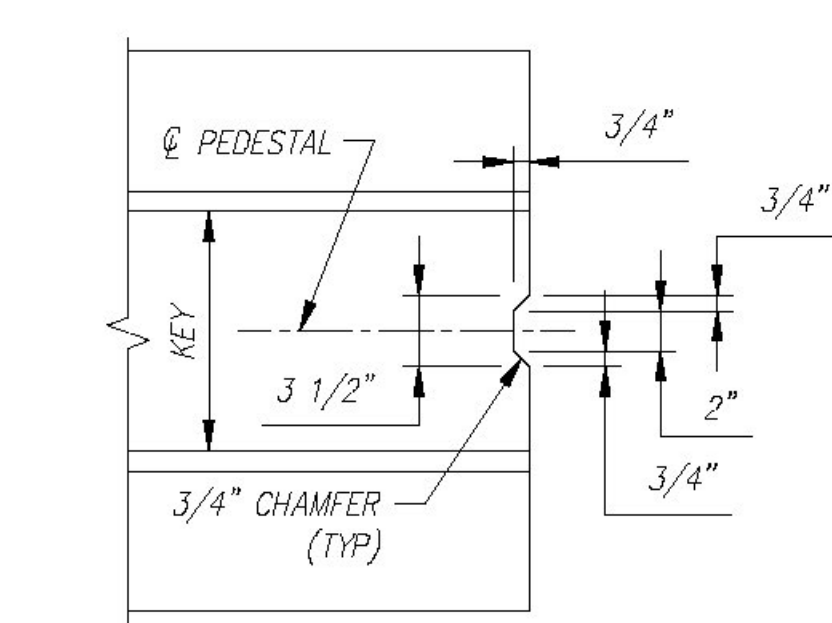
SECTION B-B REINFORCING DETAIL
Scale: N.T.S.



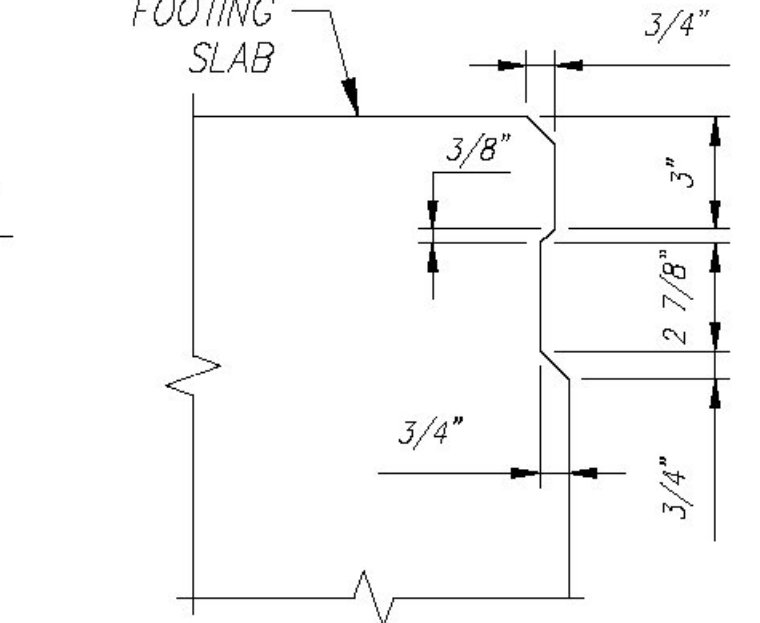
BENDING SCHEDULE
Scale: N.T.S.



SECTION C-C REINFORCING DETAIL
Scale: N.T.S.



VERTICAL SHEAR KEY
Scale: N.T.S.



JOINT DETAIL
Scale: N.T.S.

Ftg. Slab - F4 Rebar Schedule

MK	QTY	LENGTH
401 #4	28	12'-0"
402 #4	26	11'-0"
405 #4	3	10'-8"

Ftg. Pedestal-F4 Rebar Schedule

MK	QTY	LENGTH
402 #4	17	8'-3"
403 #4	9	1'-8"

FOOTING SLAB - F4 - BILL OF MATERIALS / EMBEDS

CSI ID#	DESCRIPTION	QTY	UM	COMMENTS
EM-00078	8T SPREAD ANCHOR #FL119/P94	4	EA	
EM-00125	BOLT POCKET PLATE (GALVANIZED)	2	EA	
RM-00013	REBAR #4 BLACK-GR 60	437	LB	
RM-00015	REBAR #5 BLACK-GR 60 40'	264	LB	
RM-00017	REBAR #6 BLACK-GR 60 40'	72	LB	
MX-FA5000SC30	MIX DESIGN - FLY ASH 5000 SELF CONSOLIDATING	9.34	CY	

FOOTING PEDESTAL - F4 - BILL OF MATERIALS / EMBEDS

CSI ID#	DESCRIPTION	QTY	UM	COMMENTS
RM-00013	REBAR #4 BLACK-GR 60	104	LB	
MX-FA5000SC30	MIX DESIGN - FLY ASH 5000 SELF CONSOLIDATING	2.26	CY	

QUANTITY = 1
WEIGHT = 23.69 TONS

Vermont Agency of Transportation
RECEIVED
CK'D BY CLB OK'D BY HIS
July 22, 2015
RESUBMIT NO Approved
BY C. CARLSON DATE 07/23/15

NO.	REV.	DESCRIPTION	DATE
10			
9			
8			
7			
6			
5			
4			
3			
2	10JUN2015	ADDED 6" TO WIDTH, 11'-2.75 DIM WAS 10'-8.75	
1	14MAY2015	REVISED PER CUSTOMER REVIEW, REVISED FOOTING DUE TO WINGWALL RELOCATION	

Contractor is to verify that all information shown on drawings has been thoroughly checked, complies with the contract documents and is adequate to meet the field conditions. Some dimensions and details may differ from those shown on drawings. It is the responsibility of the contractor to verify all dimensions and details. The contractor shall be responsible for any errors or omissions in the contract documents. Production will not commence until receipt of signed, approved shop drawings.

This drawing contains information proprietary to CONCRETE SYSTEMS, INC. This drawing is disclosed with the understanding that it will be retained in confidence and not be used for any other project without the written consent of CONCRETE SYSTEMS, INC. It is understood that no production of this drawing is authorized without permission from CONCRETE SYSTEMS, INC. and that it will be returned to CONCRETE SYSTEMS, INC. upon request.

This drawing is based upon information provided from the following documents and/or sources:
 Engineer: STATE OF VT/AOT PROGRAM DEVELOPMENT
 Project No: _____
 Drawings: STATE OF VT/AOT PROPOSED IMPROVEMENT BRIDGE PROJECT, TOWN OF RICHFORD SHEETS 1,2,4,22,23,24 OF 36
 Specifications: STANDARD SPECIFICATIONS FOR CONSTRUCTION DATED 2011
 Other: _____

STATE AGENCY
VTTrans

CSI
Concrete Systems Inc.
9 Commercial St., Hudson, NH, 03051
Phone 603-889-4163
Fax 603-889-2417

Drawn By: R. YEAGER Date: 16APR2015
 Reviewed By: B. KOLAWOLE Date: _____
 Approved By: C. VICK Date: 17JUN2015

G.W. TATRO CONSTRUCTION, INC.
VT/AOT BRIDGE REPLACEMENT - ROAD IMPROVEMENT
RICHFORD, VT.

SHOP DRAWING F4
C22312-F4

Quantity: 1 Project No: BRFO30229 SHEET 12 OF 14