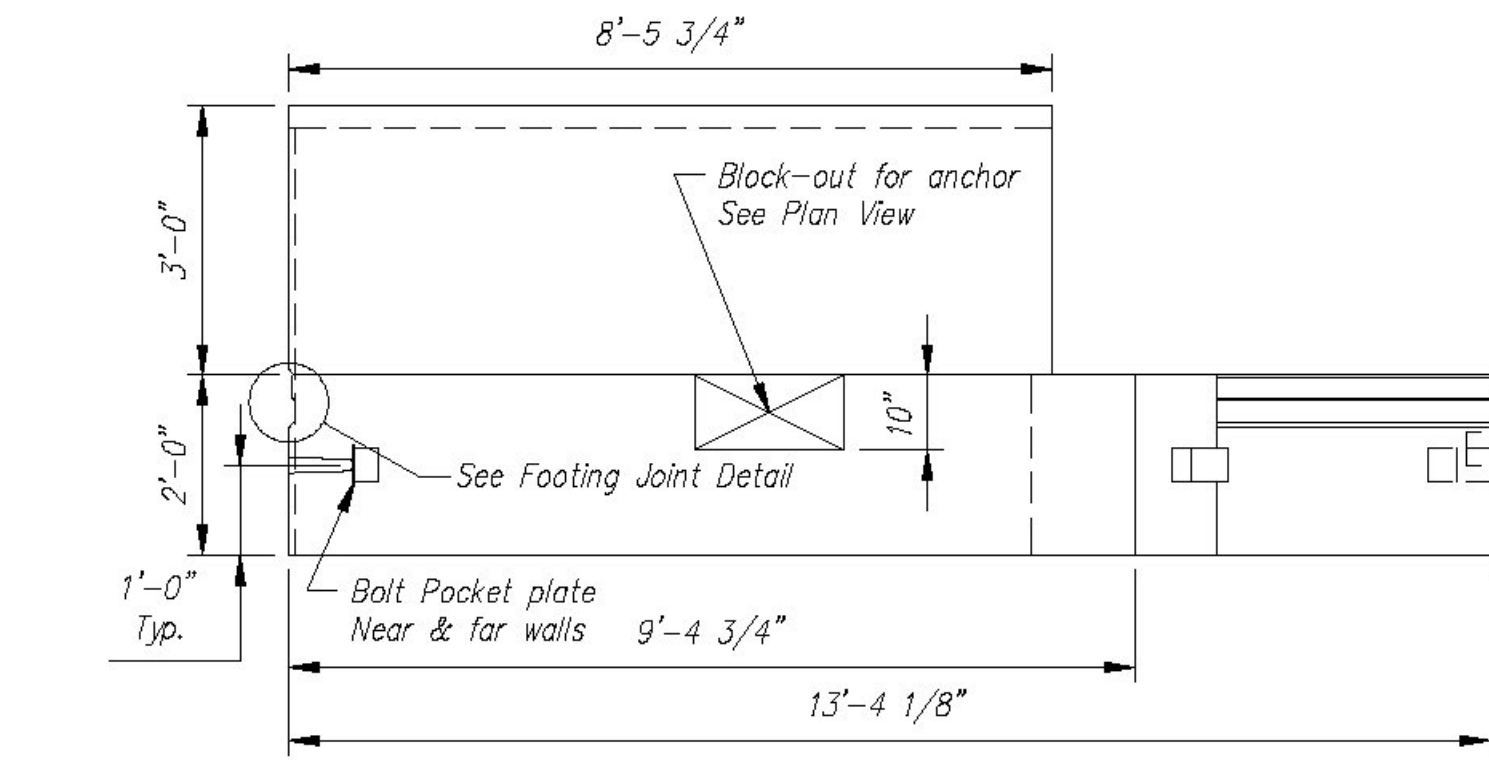
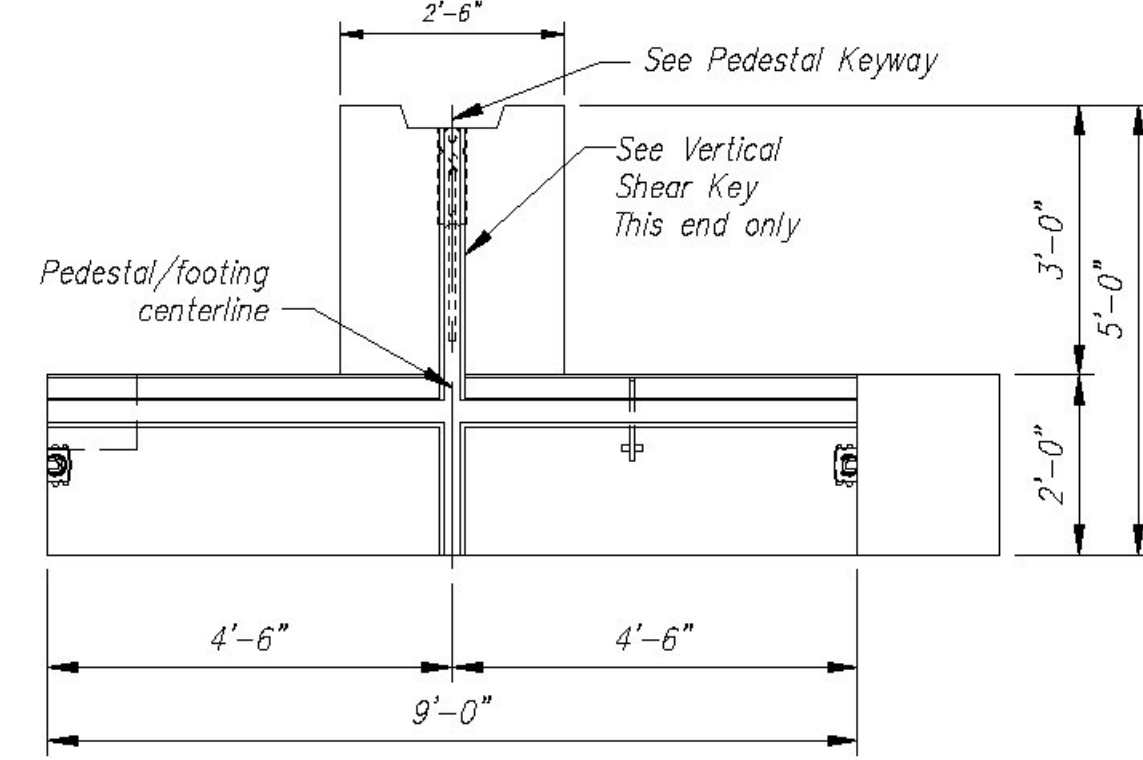


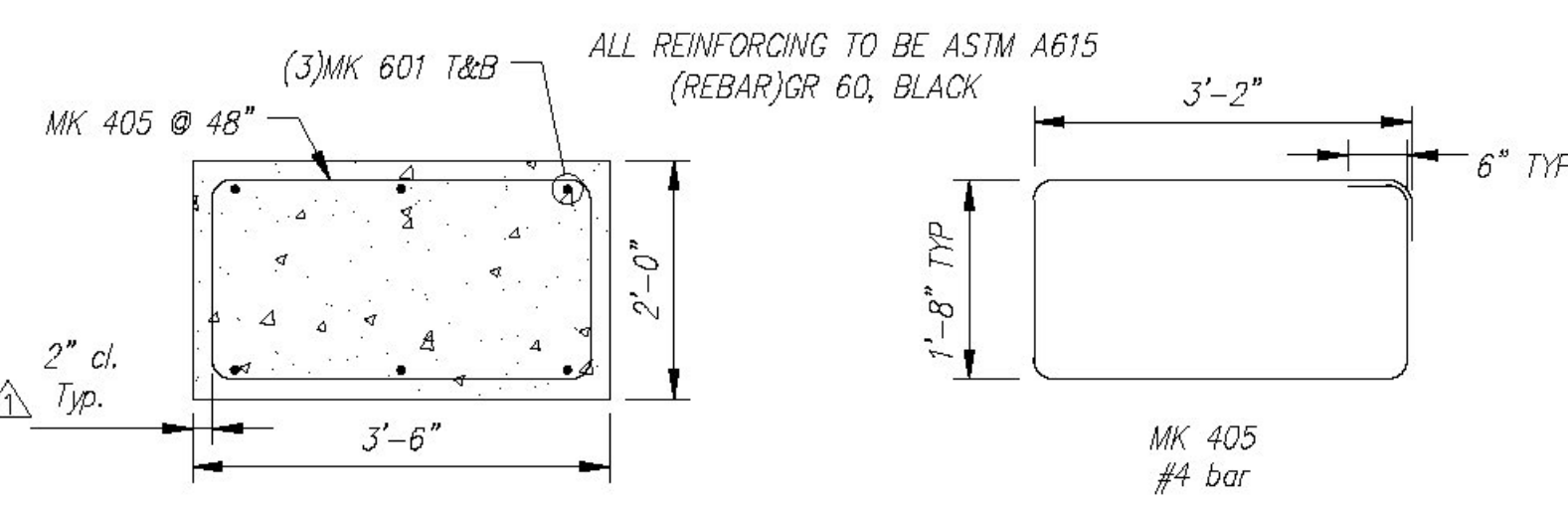
PLAN VIEW
Scale: 3/8" = 1'-0"



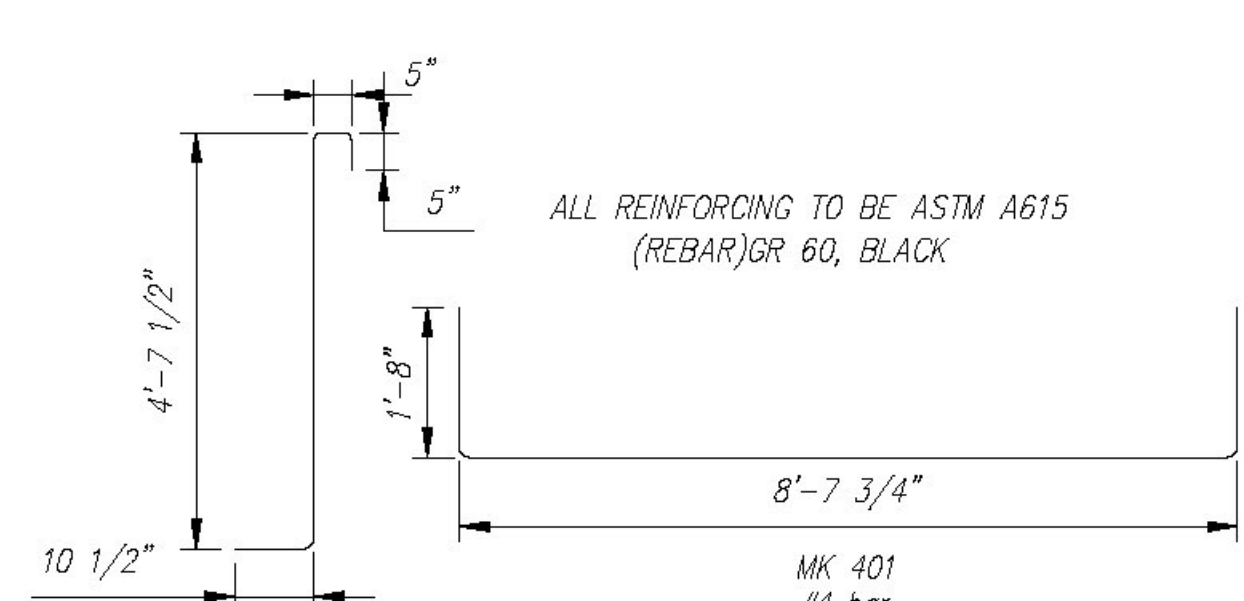
ELEVATION
Scale: 3/8" = 1'-0"



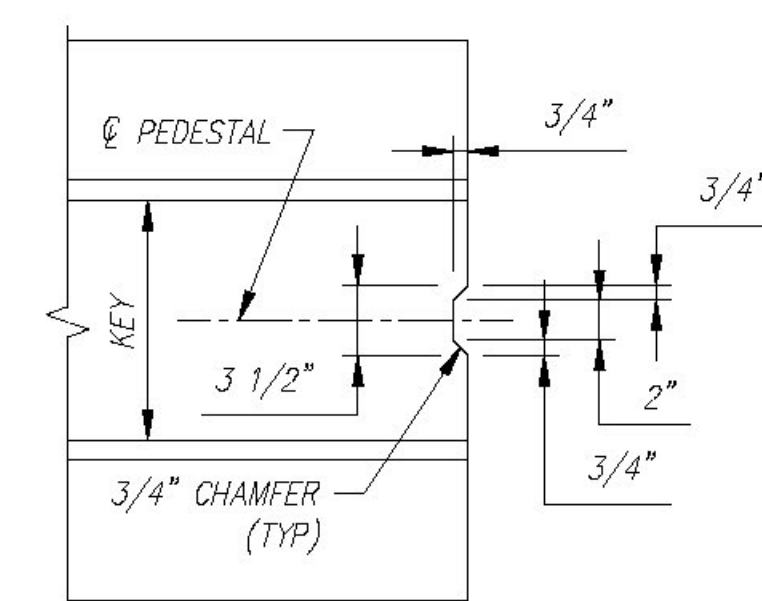
ELEVATION A-A
Scale: 3/8" = 1'-0"



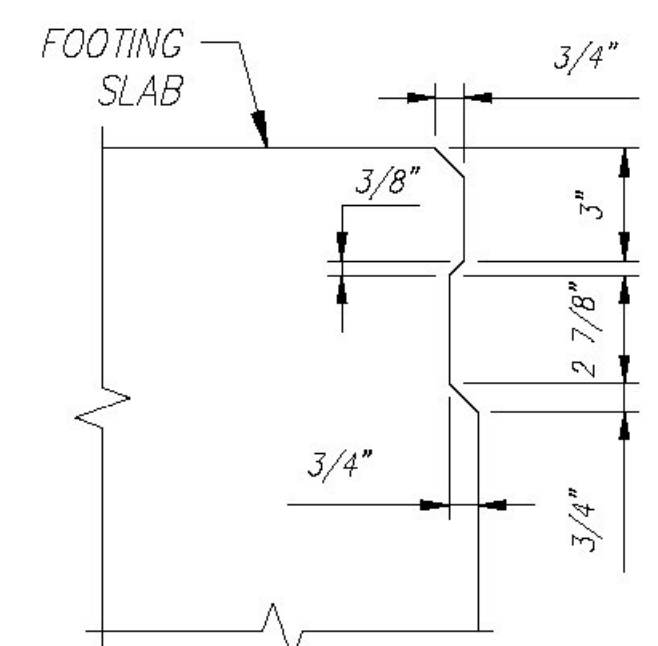
SECTION B-B REINFORCING DETAIL



BENDING SCHEDULE
Scale: N.T.S.



VERTICAL SHEAR KEY
Scale: N.T.S.



JOINT DETAIL
Scale: N.T.S.

Fig. Slab - F3A Rebar Schedule

MK	QTY	LENGTH
401 #4	22	12' - 0"
402 #4	26	9' - 4"
405 #4	2	10' - 8"
501 #5	40	6' - 4"
601 #6	6	9' - 10"

Fig. Pedestal-F3A Rebar Schedule

MK	QTY	LENGTH
402 #4	17	8' - 3"
403 #4	9	1' - 8"

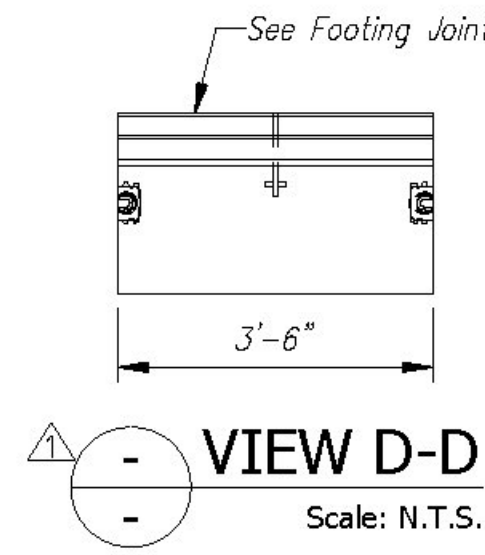
FOOTING SLAB - F3A - BILL OF MATERIALS / EMBEDS

CSI ID#	DESCRIPTION	QTY	UM	COMMENTS
EM-00078	8T SPREAD ANCHOR #FL119/P94	4	EA	
EM-00125	BOLT POCKET PLATE (GALVANIZED)	4	EA	
RM-00013	REBAR #4 BLACK-GR 60	353	LB	
RM-00015	REBAR #5 BLACK-GR 60 40'	264	LB	
RM-00017	REBAR #6 BLACK-GR 60 40'	69	LB	
MX-FA5000SC30	MIX DESIGN - FLY ASH 5000 SELF CONSOLIDATING	7.44	CY	

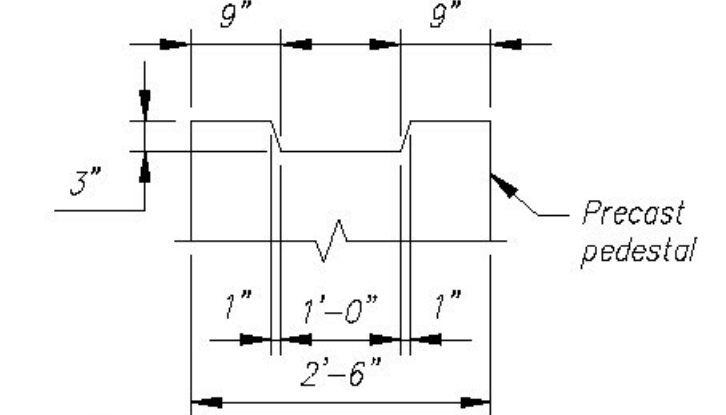
FOOTING PEDESTAL - F3A - BILL OF MATERIALS / EMBEDS

CSI ID#	DESCRIPTION	QTY	UM	COMMENTS
RM-00013	REBAR #4 BLACK-GR 60	104	LB	
MX-FA5000SC30	MIX DESIGN - FLY ASH 5000 SELF CONSOLIDATING	2.26	CY	

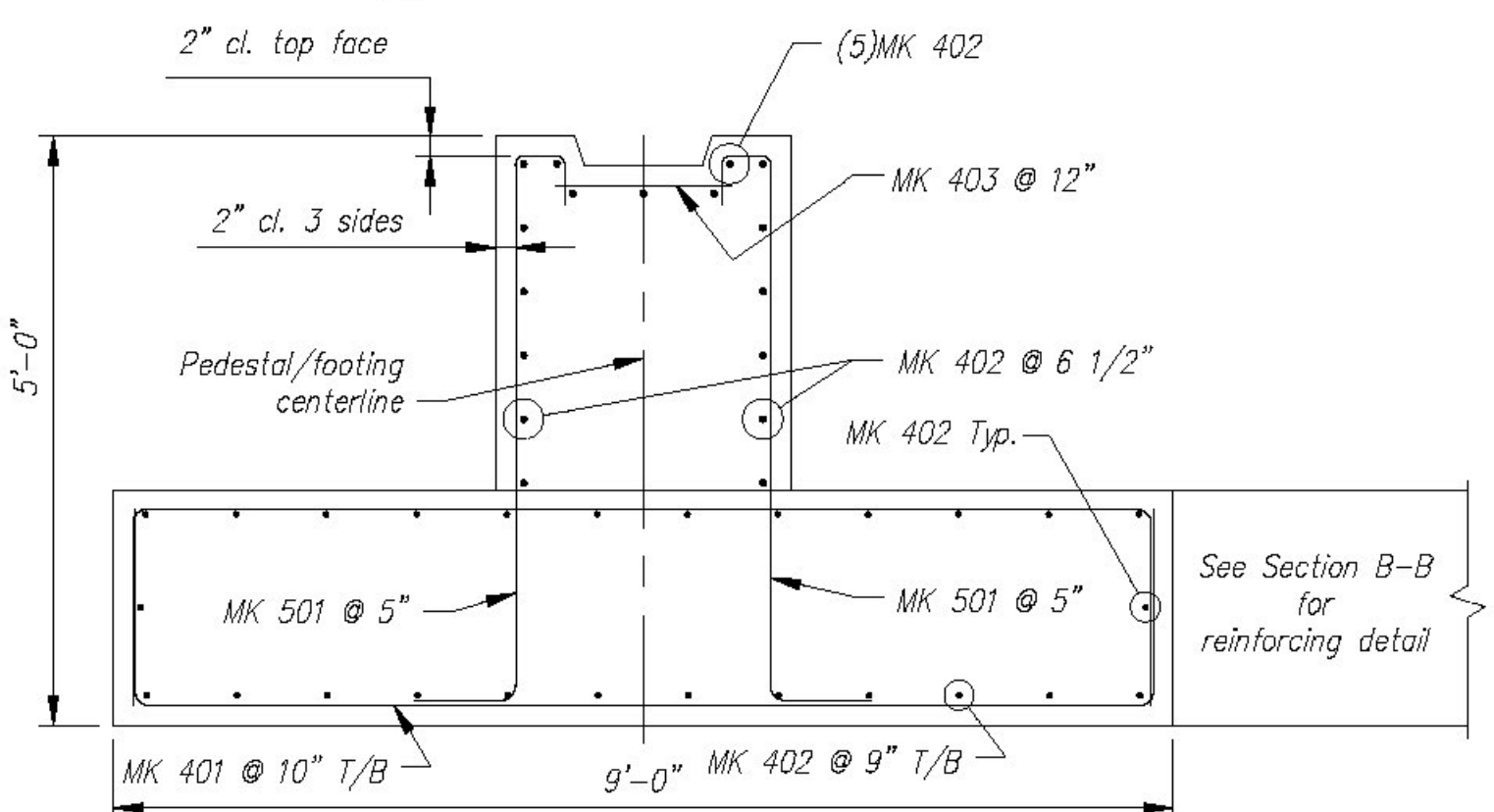
QUANTITY = 1
WEIGHT = 19.85 TONS



VIEW D-D
Scale: N.T.S.



PEDESTAL KEYWAY
Scale: N.T.S.



SECTION C-C REINFORCING DETAIL
Scale: N.T.S.

REV.	DESCRIPTION	DATE
10		
9		
8		
7		
6		
5		
4		
3		
2		
1	REVISED PER CUSTOMER REVIEW, ADDED BOLT POCKETS, REVISED ANCHOR LOCATIONS	14MAY2015

By: _____
Date: _____

Revised Per Customer Review, Added Bolt Pockets, Revised Anchor Locations

Revisions

Contractor is to verify that all information shown on drawings has been thoroughly checked, complies with the contract documents and is adequate to meet the field conditions. Some dimensions and details may differ from those shown on drawings. It is the responsibility of the contractor to verify all dimensions and details in the field. The contractor shall be responsible for any errors or omissions in the contract documents. Production will not commence until receipt of signed, approved shop drawings.

This drawing contains information proprietary to CONCRETE SYSTEMS, INC. This drawing is disclosed with the understanding that it will be retained in confidence and not be reproduced or transmitted in any form or by any means, electronic or mechanical, including photocopying, recording, or by any information storage and retrieval system, without the prior written permission of CONCRETE SYSTEMS, INC. and that it will be returned to CONCRETE SYSTEMS, INC. upon request.

Vermont Agency of Transportation
RECEIVED
CK'D BY CLB OK'D BY HIS
July 22, 2015
RESUBMIT NO Approved
BY C. CARLSON DATE 07/23/15

Following documents and/or sources:	STATE AGENCY VTTrans	G.W. TATRO CONSTRUCTION, INC. VT/AOT BRIDGE REPLACEMENT - ROAD IMPROVEMENT RICHFORD, VT.
PROJECT, TOWN OF RICHFORD	Concrete Systems Inc. 9 Commercial St., Hudson, NH, 03051 Phone 603-889-4163 Fax 603-889-2417	SHOP DRAWING F3A C22312-F3A
DATED 2011	Drawn By: R. YEAGER Reviewed By: B. KOLAWOLE Approved By: C. VICK	REV 1
	Date: 16APR2015 Date: 17JUN2015	Quantity: 1 Project No: BRFO30229 SHEET 11 OF 14