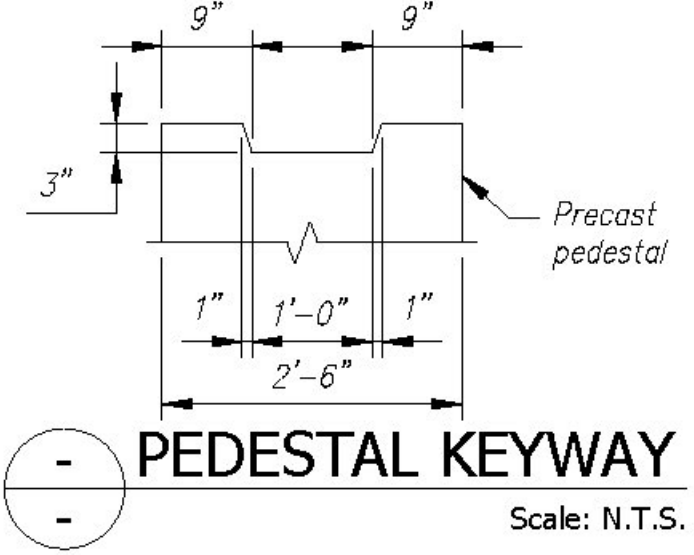
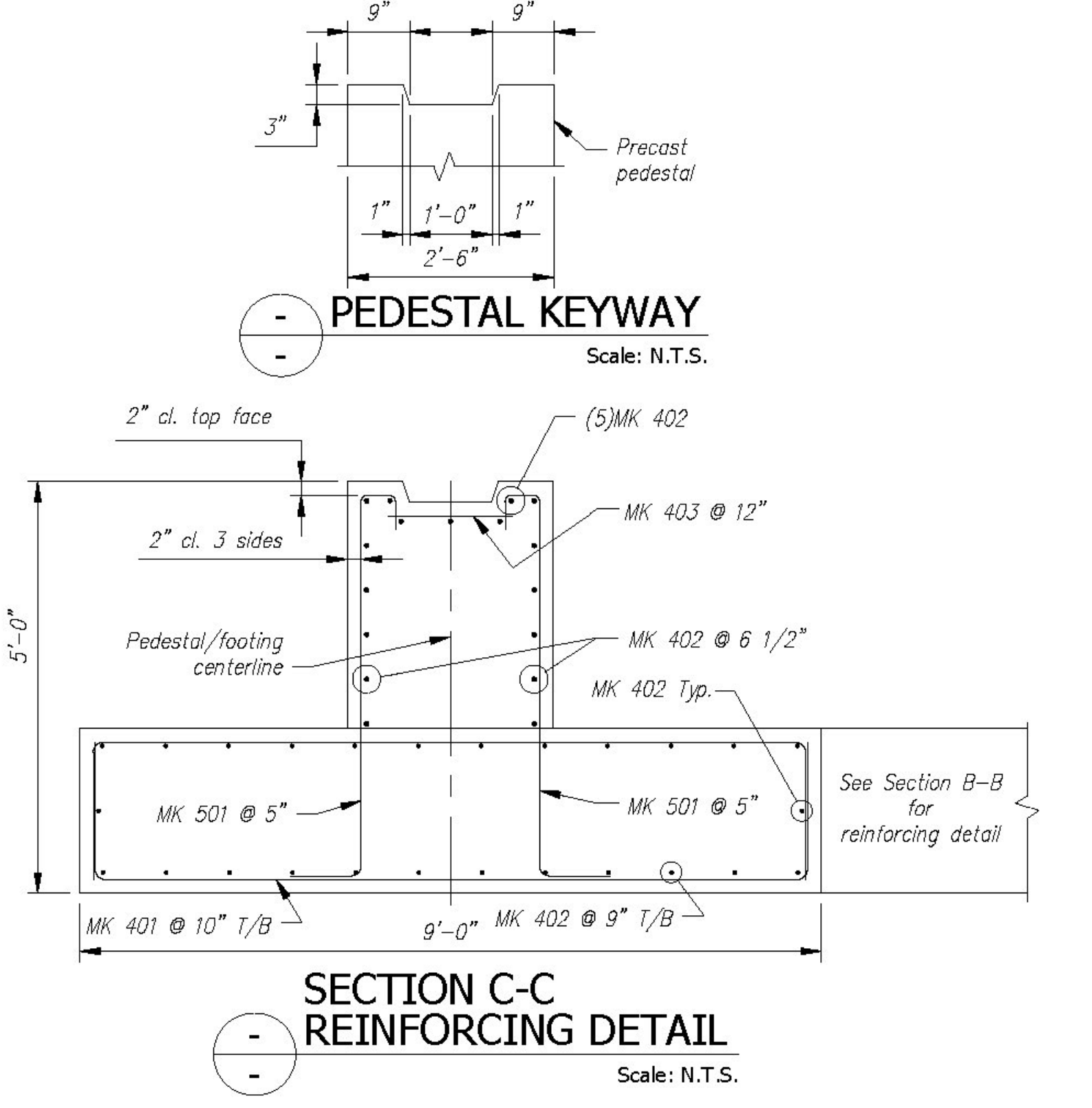
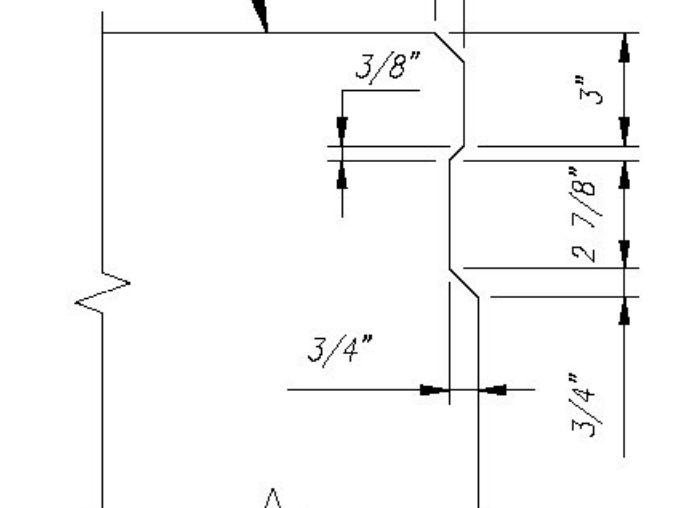
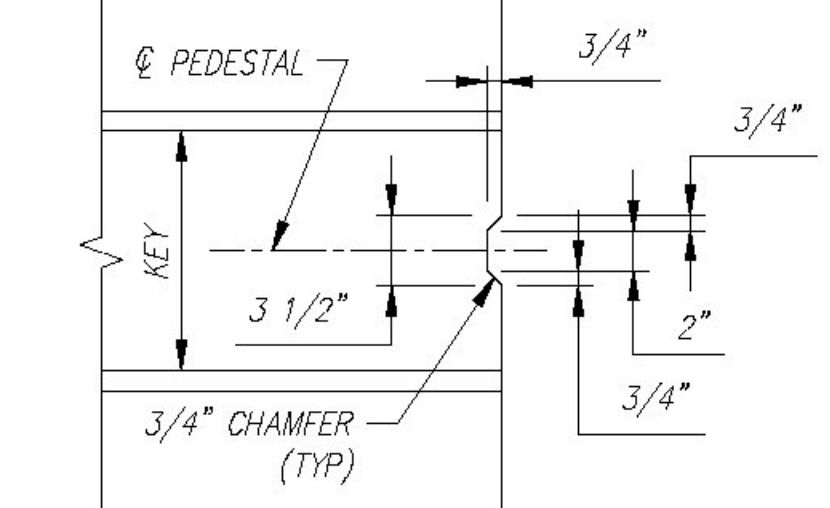
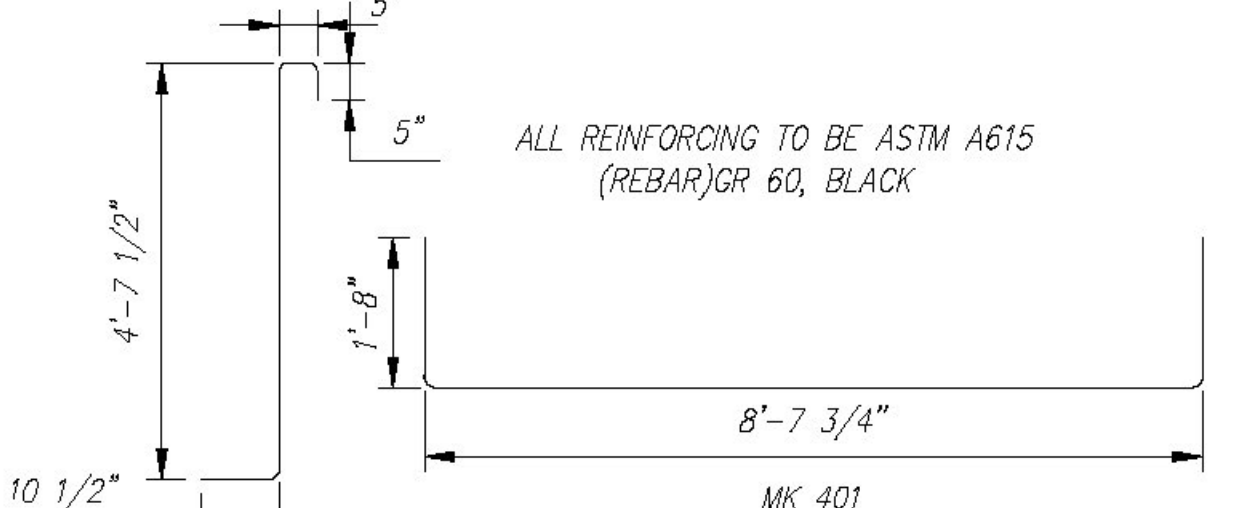
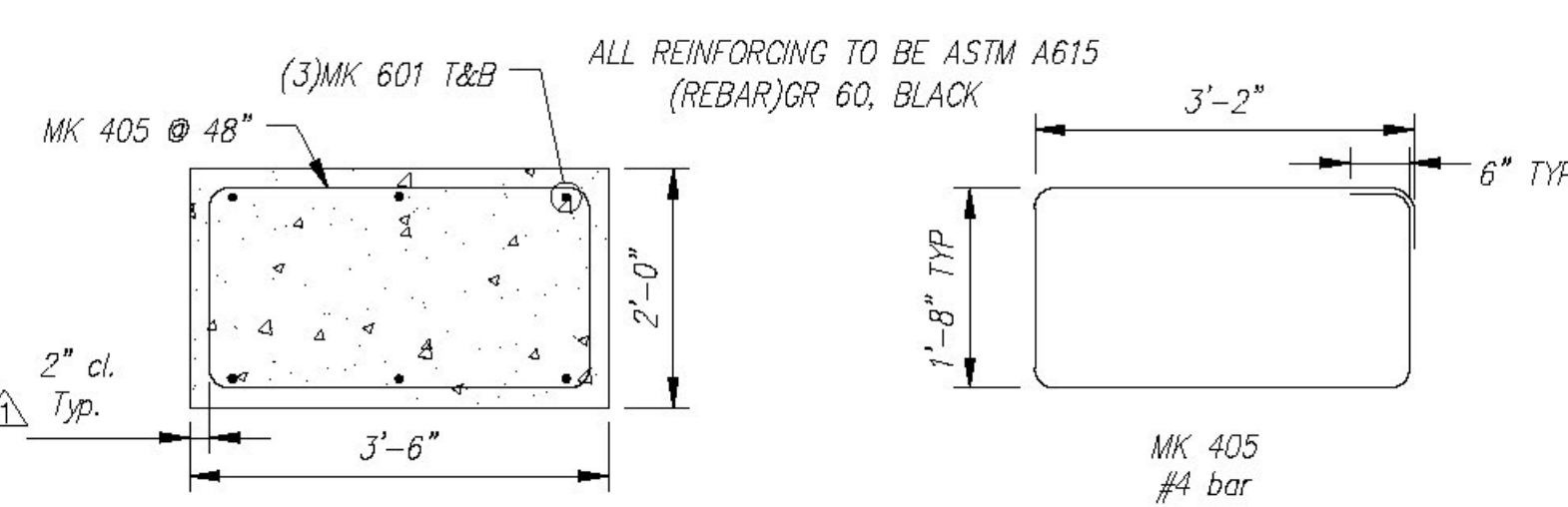
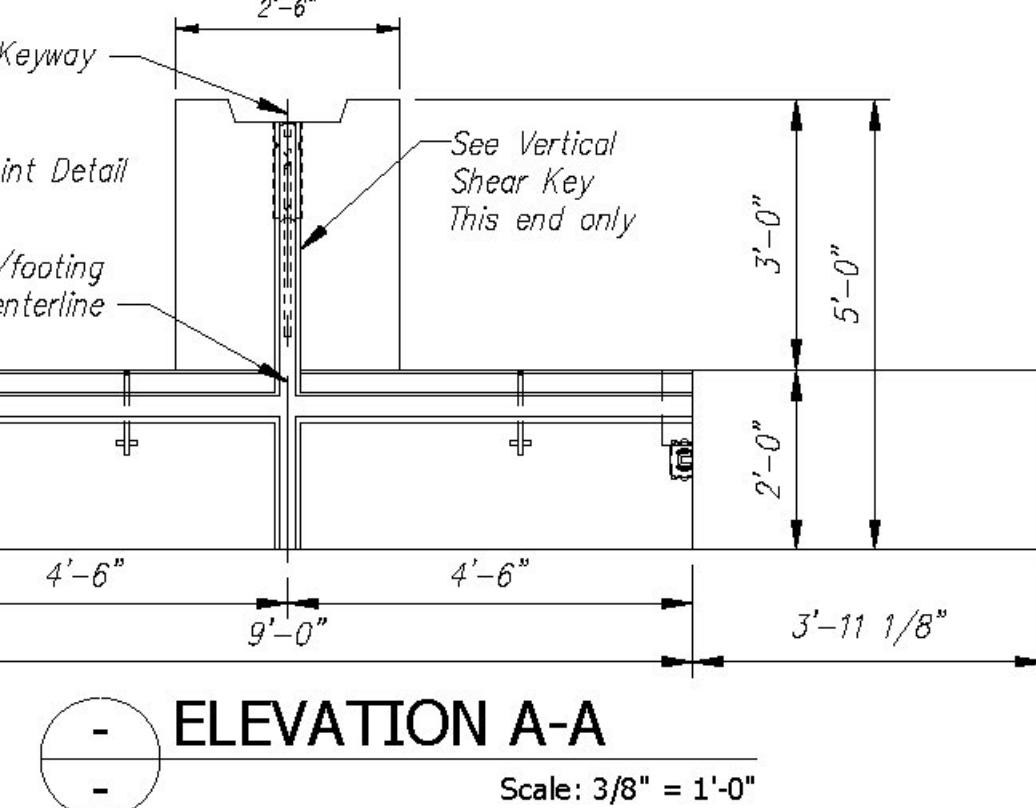
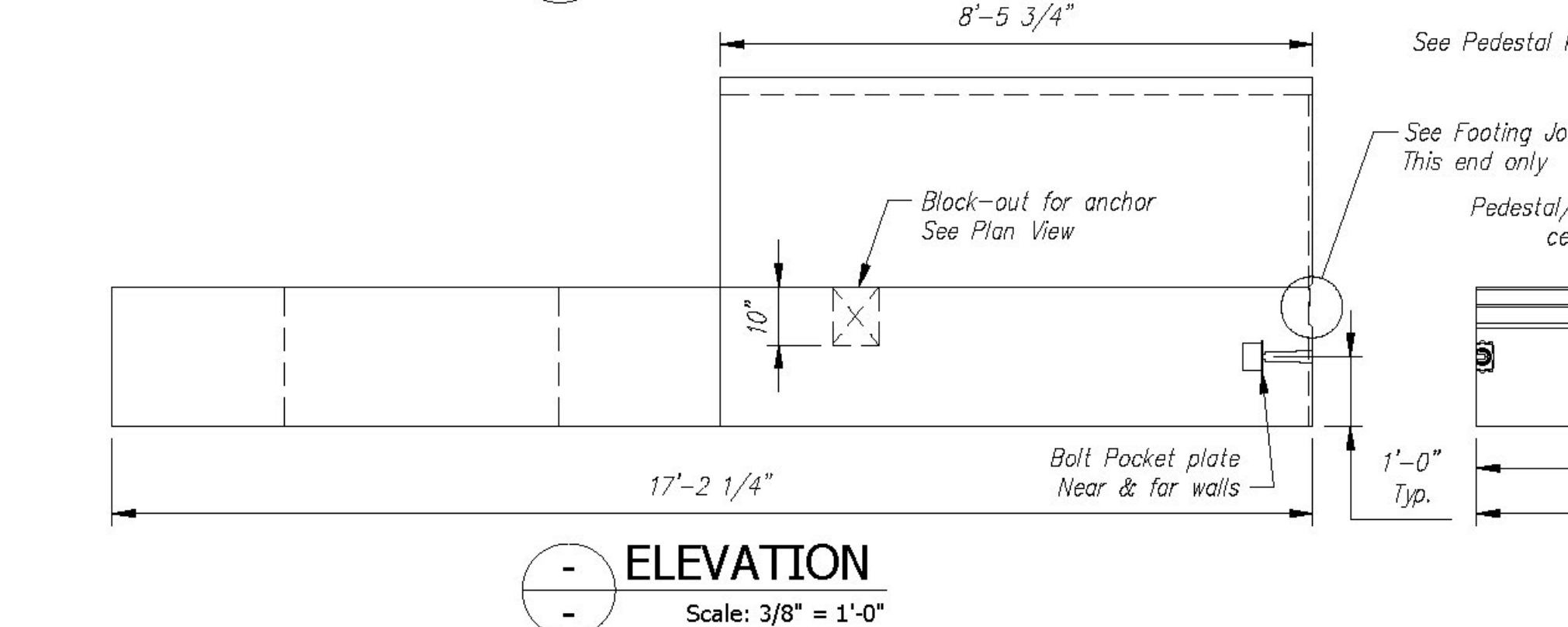
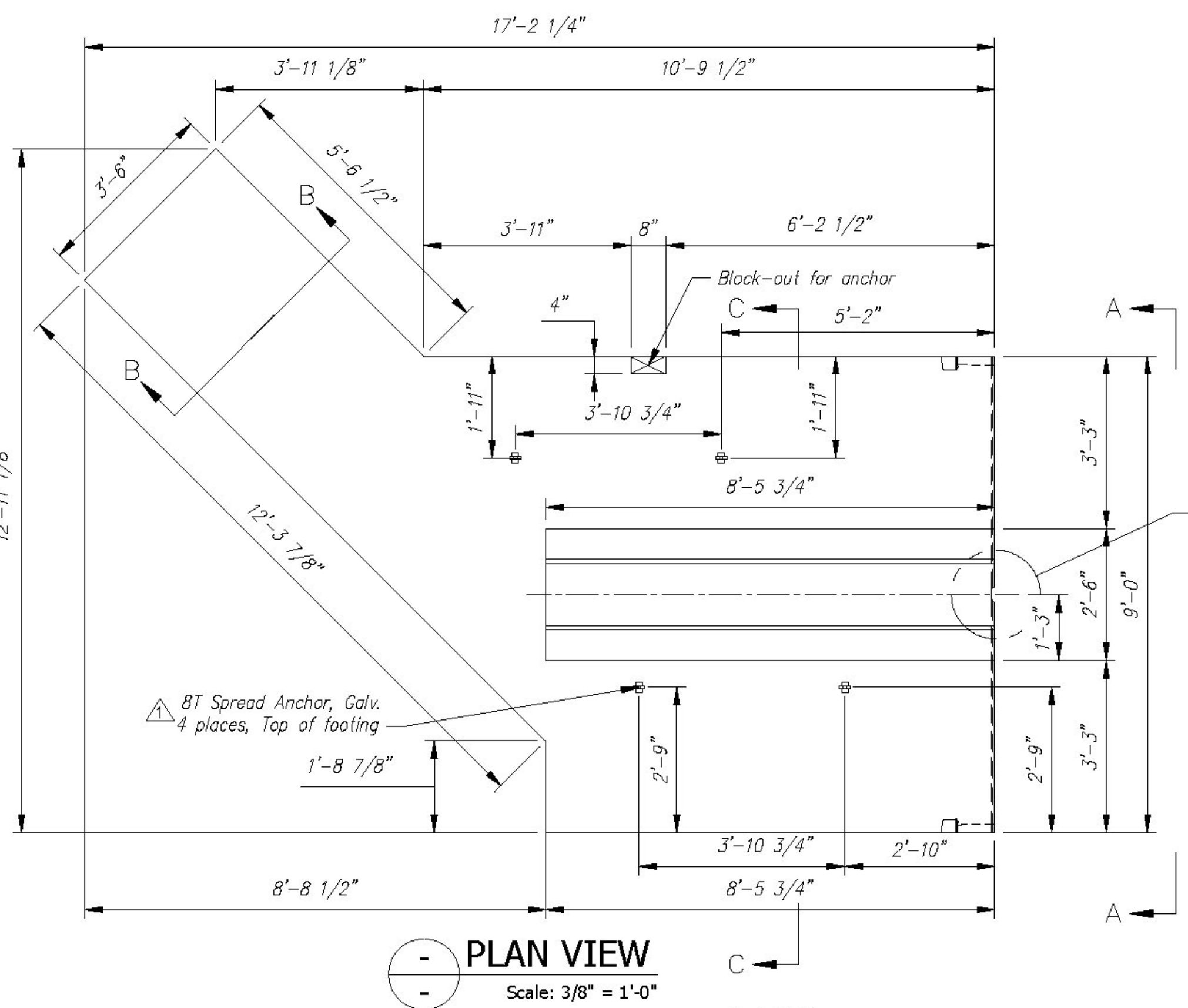


Fig. Slab - F2 Rebar Schedule			
MK	QTY	LENGTH	
401 #4	26	12'-0"	
402 #4	26	10'-9"	MAX
405 #4	4	10'-8"	
501 #5	40	6'-4"	
601 #6	6	12'-3"	MAX

Fig. Pedestal-F2 Rebar Schedule			
MK	QTY	LENGTH	
402 #4	17	8'-3"	
403 #4	9	1'-8"	

QUANTITY = 1
WEIGHT = 21.97 TONS

FOOTING SLAB - F2 - BILL OF MATERIALS / EMBEDS			
CSI ID#	DESCRIPTION	QTY	UM COMMENTS
EM-00078	8T SPREAD ANCHOR #FL119/P94	4	EA
EM-00125	BOLT POCKET PLATE (GALVANIZED)	2	EA
RM-00013	REBAR #4 BLACK-GR 60	424	LB
RM-00015	REBAR #5 BLACK-GR 60 40'	264	LB
RM-00017	REBAR #6 BLACK-GR 60 40'	110	LB
MX-FA5000SC30	MIX DESIGN - FLY ASH 5000 SELF CONSOLIDATING	8.59	CY
FOOTING PEDESTAL - F2 - BILL OF MATERIALS / EMBEDS			
RM-00013	REBAR #4 BLACK-GR 60	104	LB
MX-FA5000SC30	MIX DESIGN - FLY ASH 5000 SELF CONSOLIDATING	2.26	CY



REV.	DESCRIPTION	DATE
1	REVISED PER CUSTOMER REVIEW, REVISED ANCHOR LOCATIONS	14MAY2015
2		
3		
4		
5		
6		
7		
8		
9		
10		

Contractor is to verify that all information shown on drawings has been thoroughly checked, complies with the contract documents and is adequate to meet the field conditions. Some dimensions and details may differ from those shown on drawings. Approval of this drawing indicates that any deviation from the contract documents has been reviewed and found to be acceptable. Production will not commence until receipt of signed, approved shop drawings.

This drawing contains information proprietary to CONCRETE SYSTEMS, INC. It is to be used only for the project and site for which it is prepared. It is to be kept confidential and not to be reproduced, copied, or disseminated without the written permission of CONCRETE SYSTEMS, INC. and that it will be returned to CONCRETE SYSTEMS, INC. upon request.

Vermont Agency of Transportation
RECEIVED

CK'D BY CLB OK'D BY HIS
July 22, 2015

RESUBMIT NO Approved
BY C. CARLSON DATE 07/23/15

Following documents and/or sources:	STATE AGENCY VTTrans	G.W. TATRO CONSTRUCTION, INC. VT/AOT BRIDGE REPLACEMENT- ROAD IMPROVEMENT RICHFORD, VT.
PROJECT, TOWN OF RICHFORD	Concrete Systems Inc. 9 Commercial St., Hudson, NH, 03051 Phone 603-889-4163 Fax 603-889-2417	SHOP DRAWING F2 C22312-F2
DATED 2011	Drawn By: R. YEAGER Date: 16APR2015 Reviewed By: B. KOLAWOLE Date: 17JUN2015 Approved By: C. VICK	REV 1
	Quantity: 1 Project No: BRFO30229	SHEET 10 OF 14