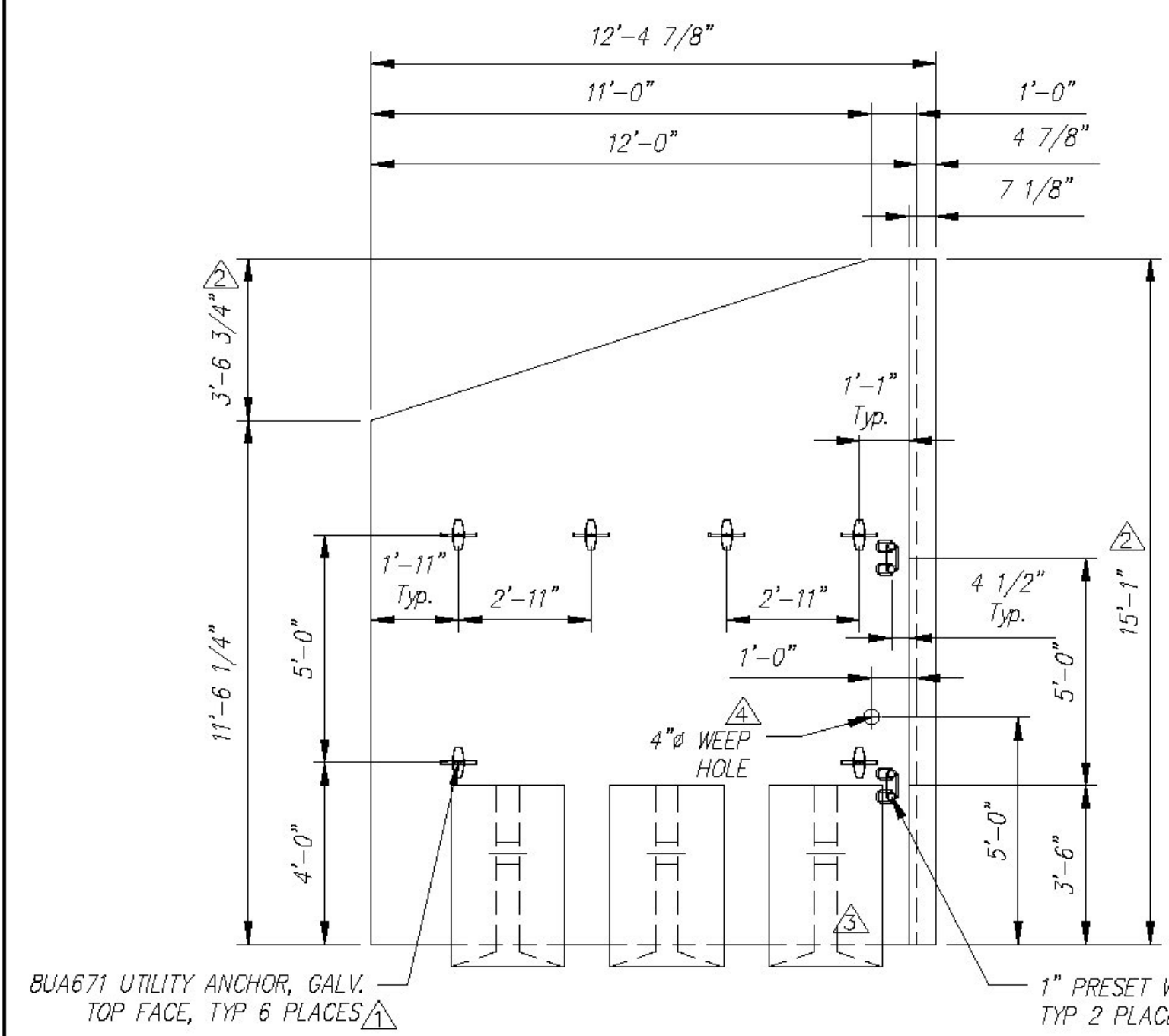
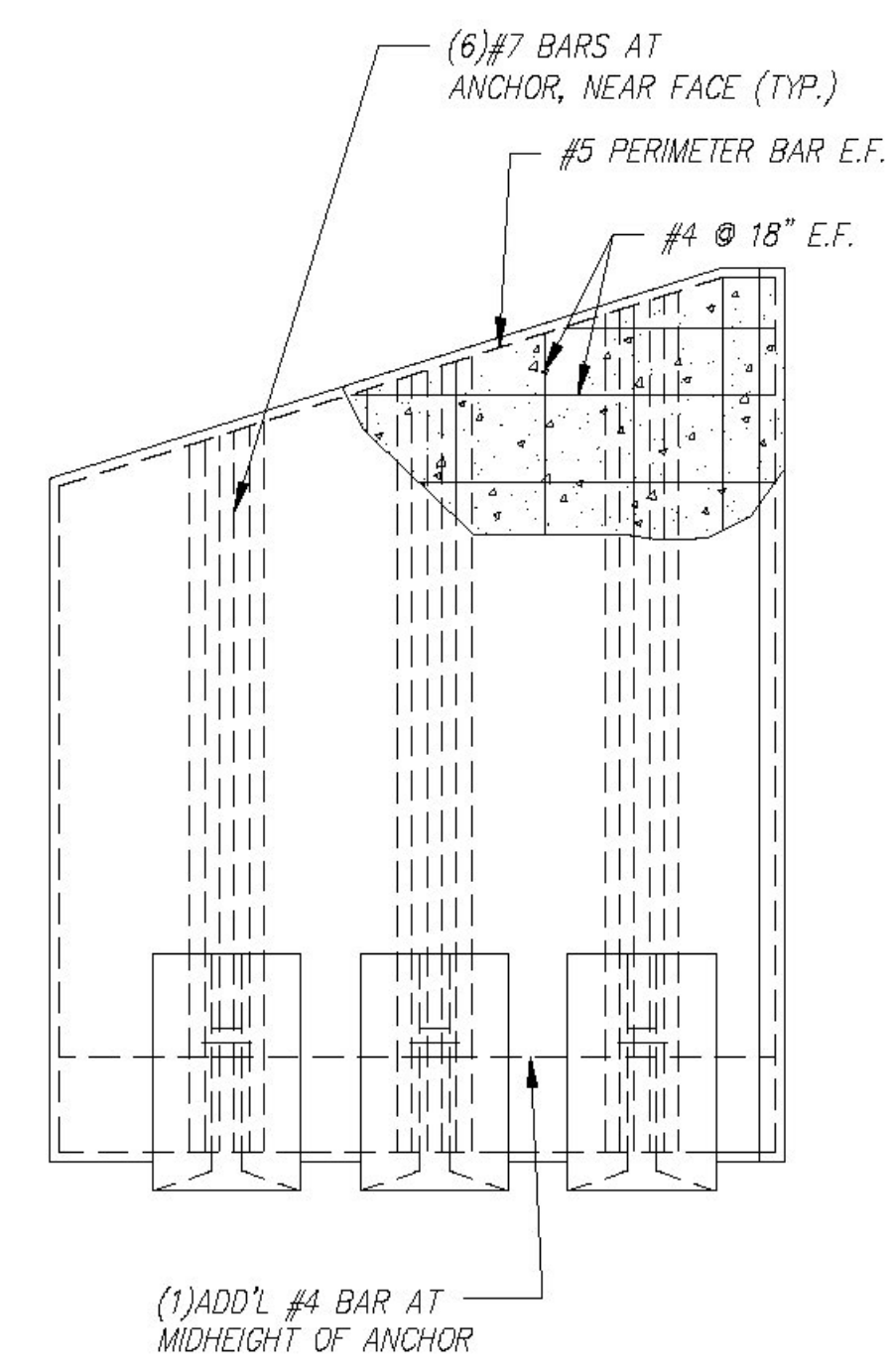


QUANTITY = 1  
WEIGHT = 15.73 TONS



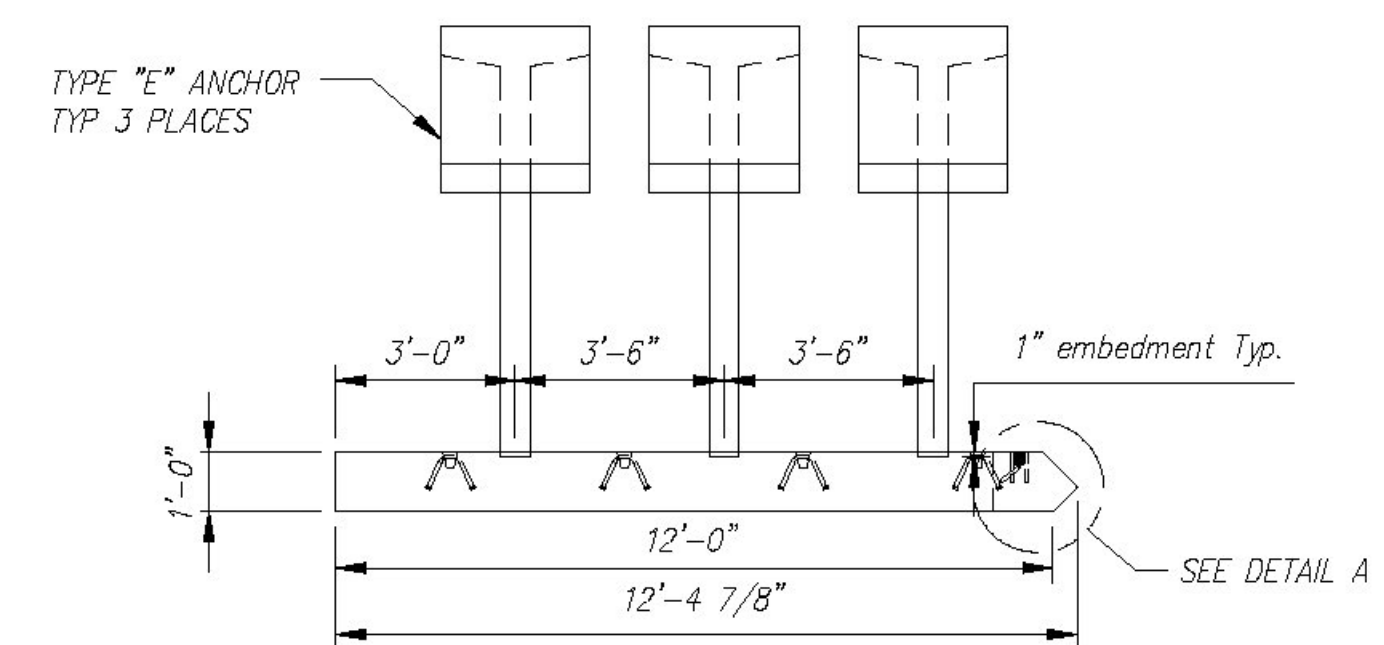
PLAN VIEW  
Scale: 1/4" = 1'-0"

ALL EXPOSED EDGES OF CONCRETE TO RECEIVE 1" CHAMFER

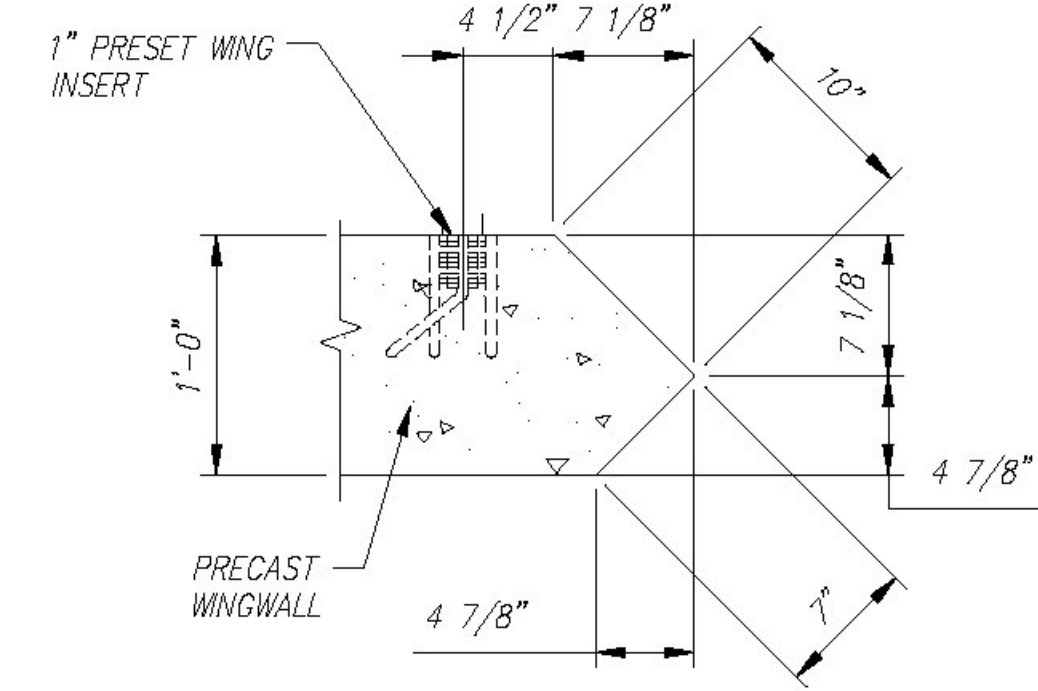


REINFORCING DETAIL  
Scale: 1/4" = 1'-0"

WW1 - BILL OF MATERIALS / EMBEDS				
CSI ID#	DESCRIPTION	QTY	UM	COMMENTS
CSANC-E	CONSPAN WINGWALL ANCHOR (E)	3	EA	
DTJ	CERTI-VEX PENSEAL 244-40%	1.20	GA	
EM-00034	4" FOAM CORE PVC	1	FT	
EM-0005A	1" X 6" PRESET WING INSERT	2	EA	
EM-00115	UTILITY ANCHOR #8UA671-GALVANIZED	6	EA	
DTJ	REBAR #4 Z-BAR GR 60 VTAOT LEVEL II	335	LB	
DTJ	REBAR #5 Z-BAR GR 60 VTAOT LEVEL II	106	LB	
DTJ	REBAR #7 Z-BAR GR 60 VTAOT LEVEL II	533	LB	
MX-FA5000SC30	MIX DESIGN - FLY ASH 5000 SELF CONSOLIDATING	6.06	CY	



FRONT ELEVATION  
Scale: 1/4" = 1'-0"



DETAIL A  
Scale: N.T.S.

Rev.	Date	Description
10		
9		
8		
7		
6		
5		
4	17JUN2015	REVISED PER CUSTOMER REVIEW
3	10JUN2015	MOVED WEEP HOLE TO 1'
2	28MAY2015	15'-1 WAS 14'-8", VARIOUS CHANGES
1	14MAY2015	REVISED PER CUSTOMER REVIEW

Contractor is to verify that all information shown on drawings has been thoroughly checked, complies with the contract documents and is adequate to meet the field conditions. Some dimensions and details may differ from those shown on drawings. Approval of this drawing indicates that any deviation from the contract documents has been reviewed and found to be acceptable. Production will not commence until receipt of signed, approved shop drawings.

This drawing contains information proprietary to CONCRETE SYSTEMS, INC. It is disclosed with the understanding that it will be retained in confidence and that no reproduction of this drawing is authorized without permission from CONCRETE SYSTEMS, INC. and that it will be returned to CONCRETE SYSTEMS, INC. upon request.

Vermont Agency of Transportation  
**RECEIVED**  
CK'D BY CLB OK'D BY HIS  
July 22, 2015  
RESUBMIT NO Approved  
BY C. CARLSON DATE 07/23/15

This drawing is based upon information provided from the following documents and/or sources:  
Engineer: STATE OF VT/AOT PROGRAM DEVELOPMENT  
Project No: \_\_\_\_\_  
Drawings: STATE OF VT/AOT PROPOSED IMPROVEMENT BRIDGE PROJECT, TOWN OF RICHFORD SHEETS 1,2,4,22,23,24 OF 36  
Specifications: STANDARD SPECIFICATIONS FOR CONSTRUCTION DATED 2011  
Other: \_\_\_\_\_

STATE AGENCY  
VTTrans  
Concrete Systems Inc.  
9 Commercial St., Hudson, NH, 03051  
Phone 603-889-4163  
Fax 603-889-2417

Drawn By: B. SKELTON/RV Date: 17APR2015  
Reviewed By: B. KOLAWOLE Date: \_\_\_\_\_  
Approved By: C. VICK Date: 17JUN2015

G.W. TATRO CONSTRUCTION, INC.  
VT/AOT BRIDGE REPLACEMENT- ROAD IMPROVEMENT  
RICHFORD, VT.

SHOP DRAWING WW1  
C22312--WW1

Quantity: 1 Project No: BRFO30229 SHEET 4 OF 14