

HD STEEL BEAM GUARDRAIL, GALVANIZED
 STA 43+44.92 LT - STA 43+88.67 LT
 STA 43+44.92 RT - STA 43+88.67 RT
 STA 44+87.33 LT - STA 45+31.08 LT
 STA 44+87.33 RT - STA 45+31.08 RT

REMOVING AND RESETTING FENCE *
 STA 42+50.00 LT - STA 44+17.00 LT
 STA 42+50.00 RT - STA 44+23.00 RT
 STA 44+51.00 RT - STA 44+75.00 RT
 STA 44+52.00 LT - STA 46+25.00 LT

REMOVAL AND DISPOSAL OF GUARDRAIL
 STA 43+98.79 LT - STA 44+78.62 LT
 STA 43+98.45 RT - STA 44+77.92 RT

CAST-IN-PLACE CONCRETE CURB, TYPE B
 STA 43+83.58 LT - STA 44+24.00 LT
 STA 44+52.00 LT - STA 44+92.00 LT
 STA 43+83.58 RT - STA 44+24.00 RT
 STA 44+52.00 RT - STA 44+92.00 RT

**GUARDRAIL APPROACH SECTION,
 GALVANIZED 2 RAIL BOX BEAM**
 STA 43+88.67 LT - STA 44+24.00 LT
 STA 43+88.67 RT - STA 44+24.00 RT
 STA 44+52.00 LT - STA 44+87.33 LT
 STA 44+52.00 RT - STA 44+87.33 RT

*** FENCING WILL BE RESET AT A LOCATION
 AGREED UPON W/ THE PROPERTY OWNER
 AND ENGINEER IN THE FIELD**

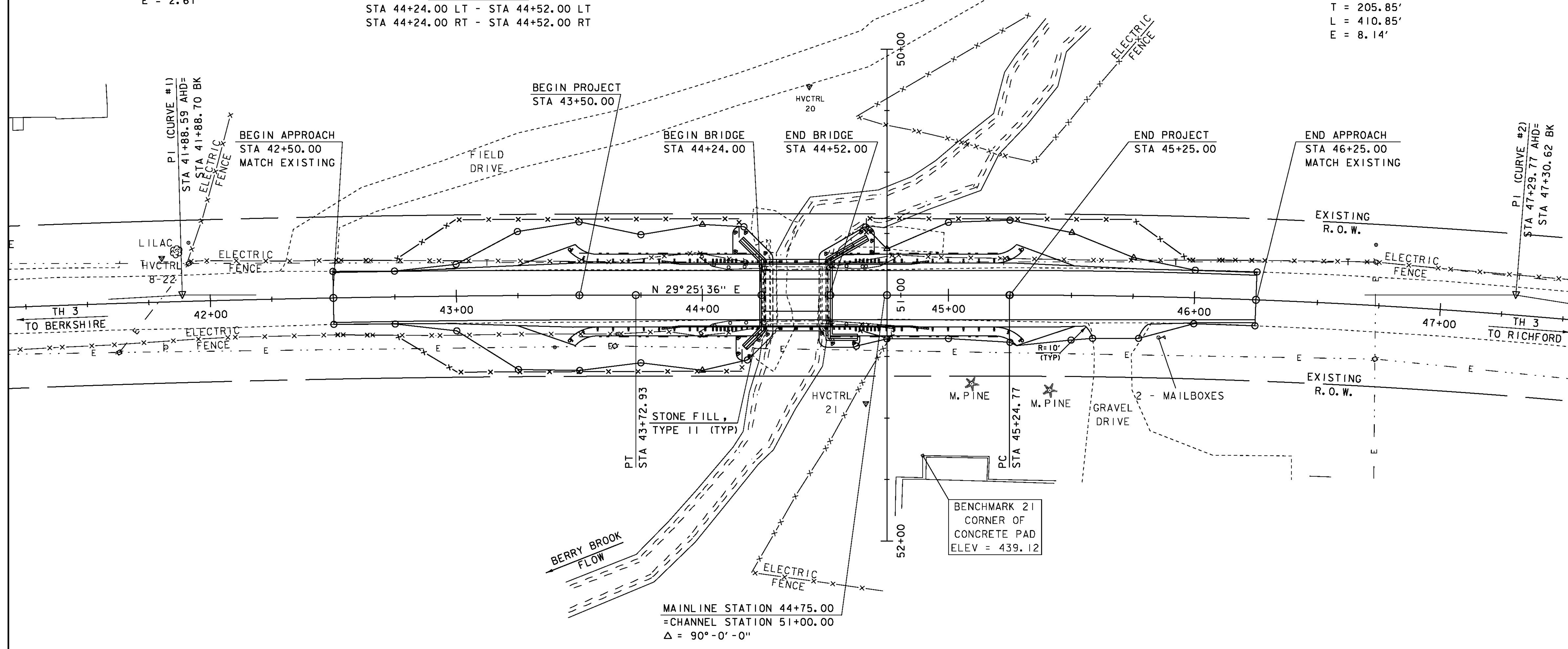
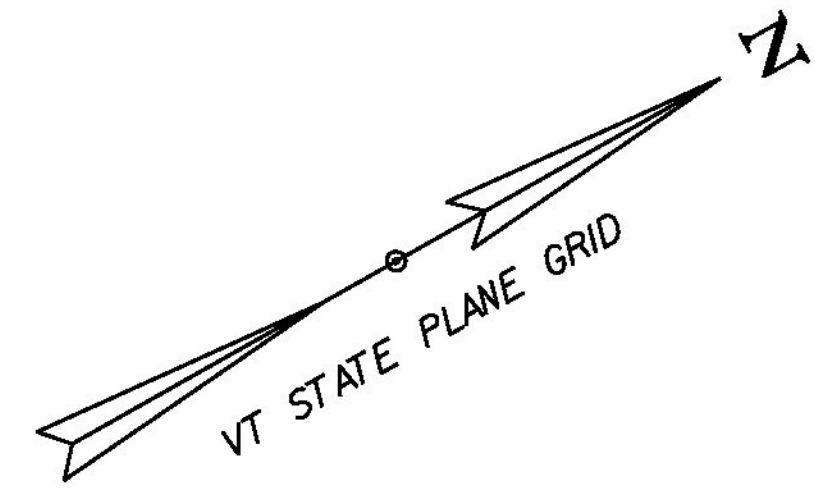
CONSTRUCT 5' PAVED APRON
 STA 45+59.00 RT - STA 45+77.00 RT

ANCHOR FOR STEEL BEAM RAIL
 STA 43+50.98 LT & RT
 STA 45+23.80 LT & RT

**BRIDGE RAILING, GALVANIZED
 2 RAIL BOX BEAM**
 STA 44+24.00 LT - STA 44+52.00 LT
 STA 44+24.00 RT - STA 44+52.00 RT

CURVE (1)
 DELTA = 3° 14' 56"
 D = 0° 52' 53"
 R = 6500.00'
 T = 184.34'
 L = 368.57'
 E = 2.61'

CURVE (2)
 DELTA = 9° 03' 14"
 D = 2° 12' 13"
 R = 2600.00'
 T = 205.85'
 L = 410.85'
 E = 8.14'



EXISTING BRIDGE DATA
 SINGLE SPAN CONCRETE T-BEAM
 BRIDGE BUILT IN 1900
 BRIDGE LENGTH = 24 FT.
 WATERWAY AREA = 125 SF

SCALE 1" = 20'-0"
 20 0 20

PROJECT NAME: RICHFORD	PLOT DATE: 11-DEC-2014
PROJECT NUMBER: BRF 0302(29)	DRAWN BY: R. PELLETT
FILE NAME: st2j158bdr.dgn	CHECKED BY: H. SALLS
DESIGNED BY: H. SALLS	LAYOUT
	SHEET 10 OF 36