

GPS CONTROL POINTS

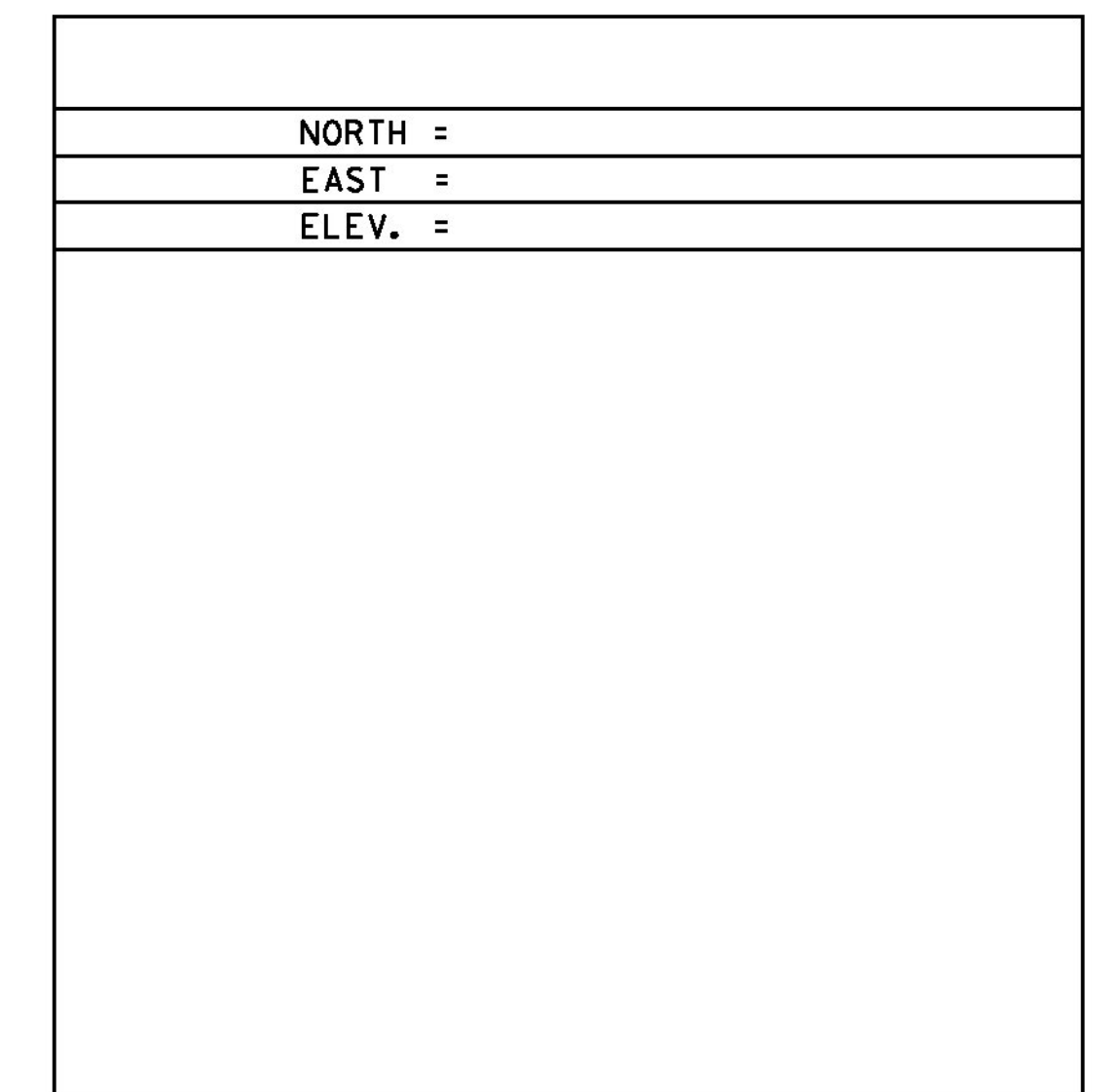
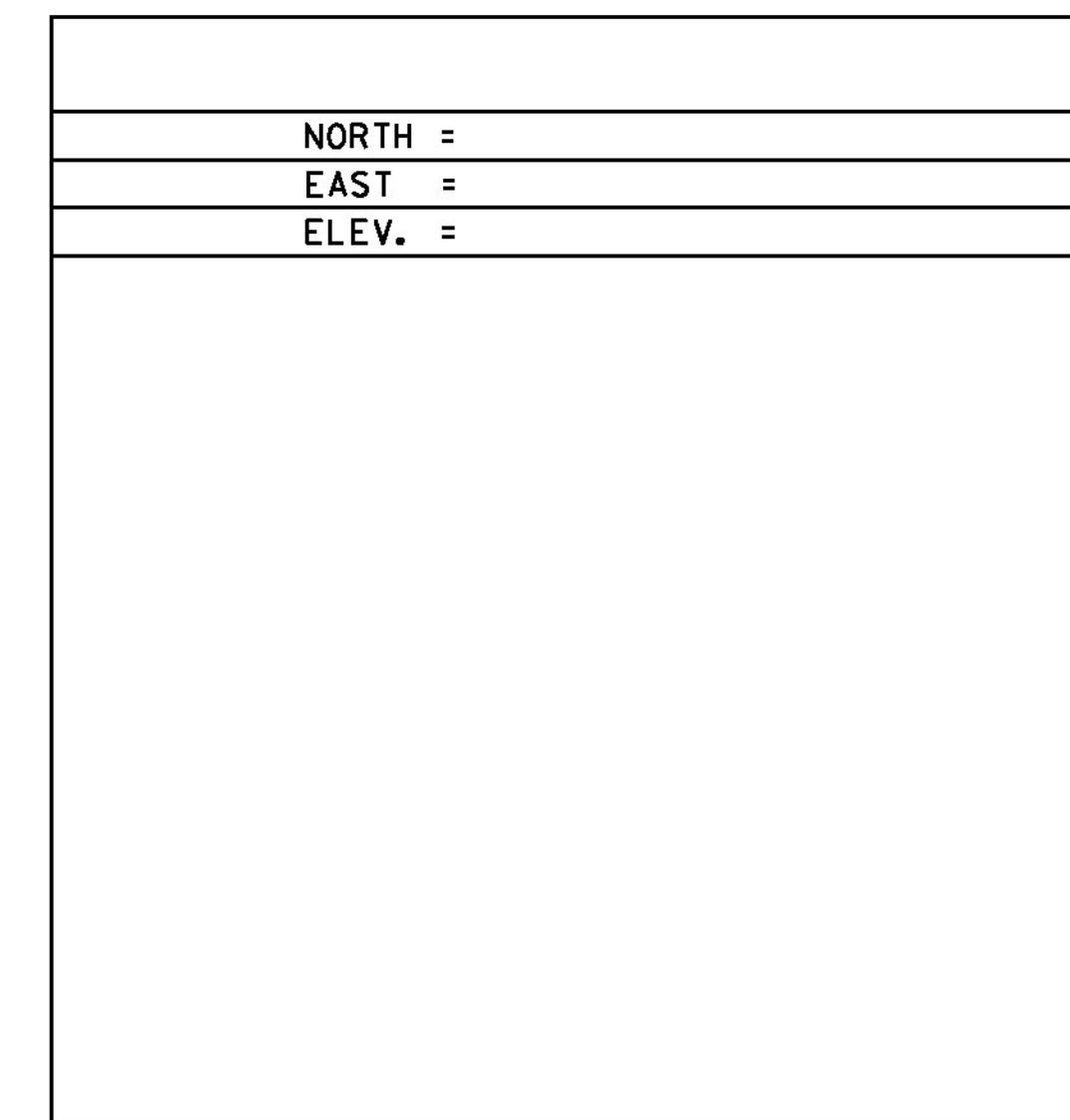
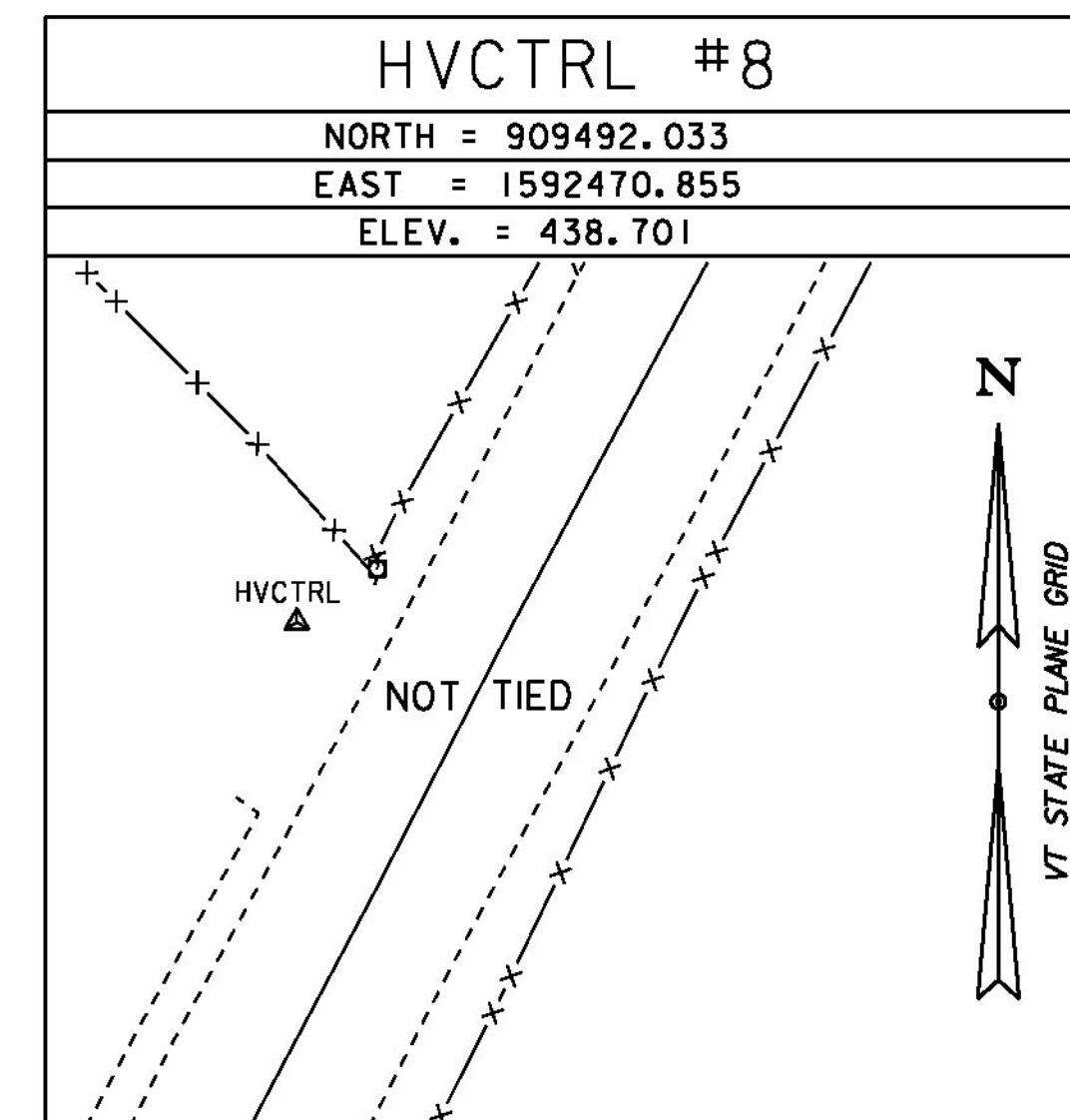
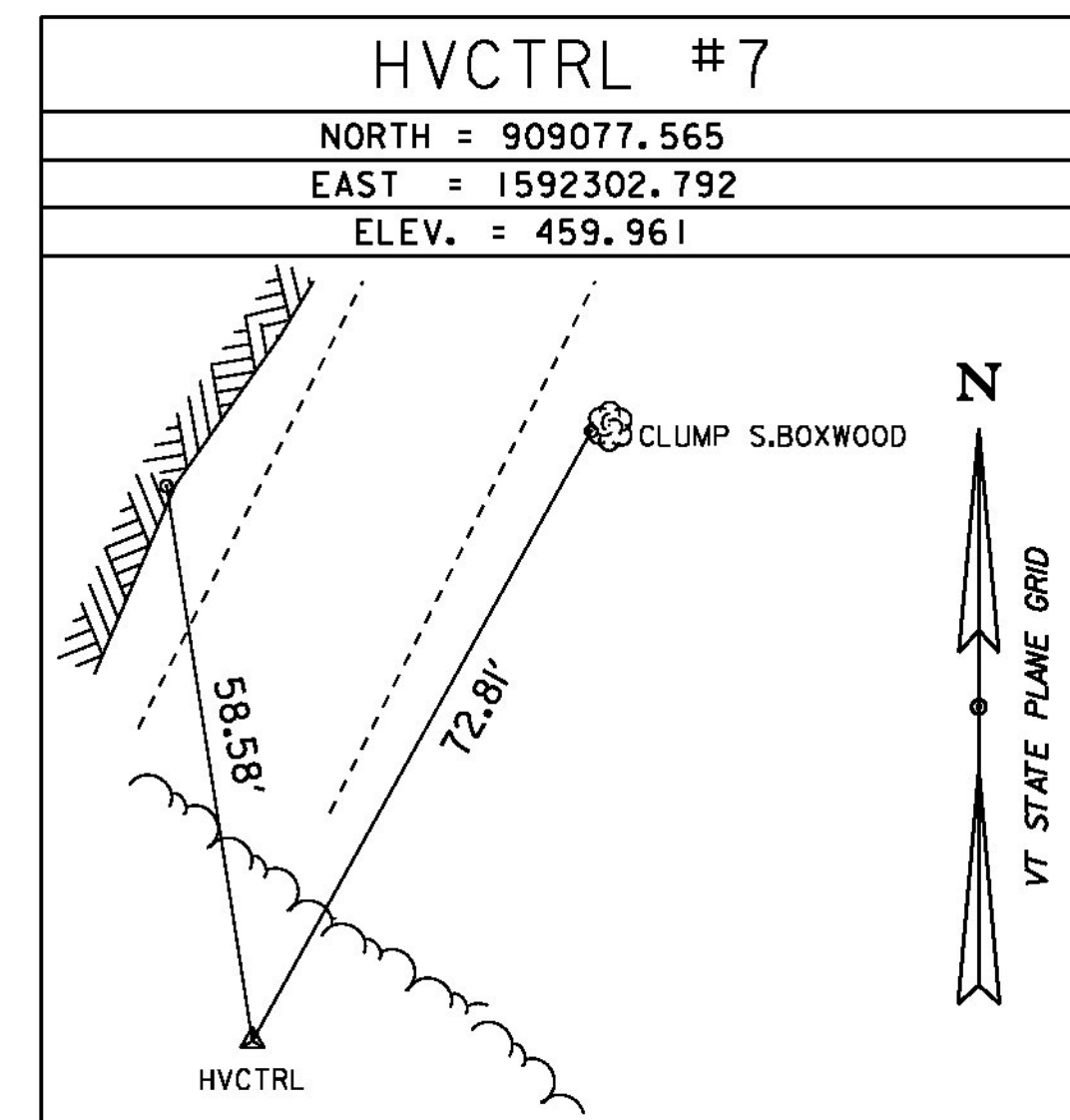
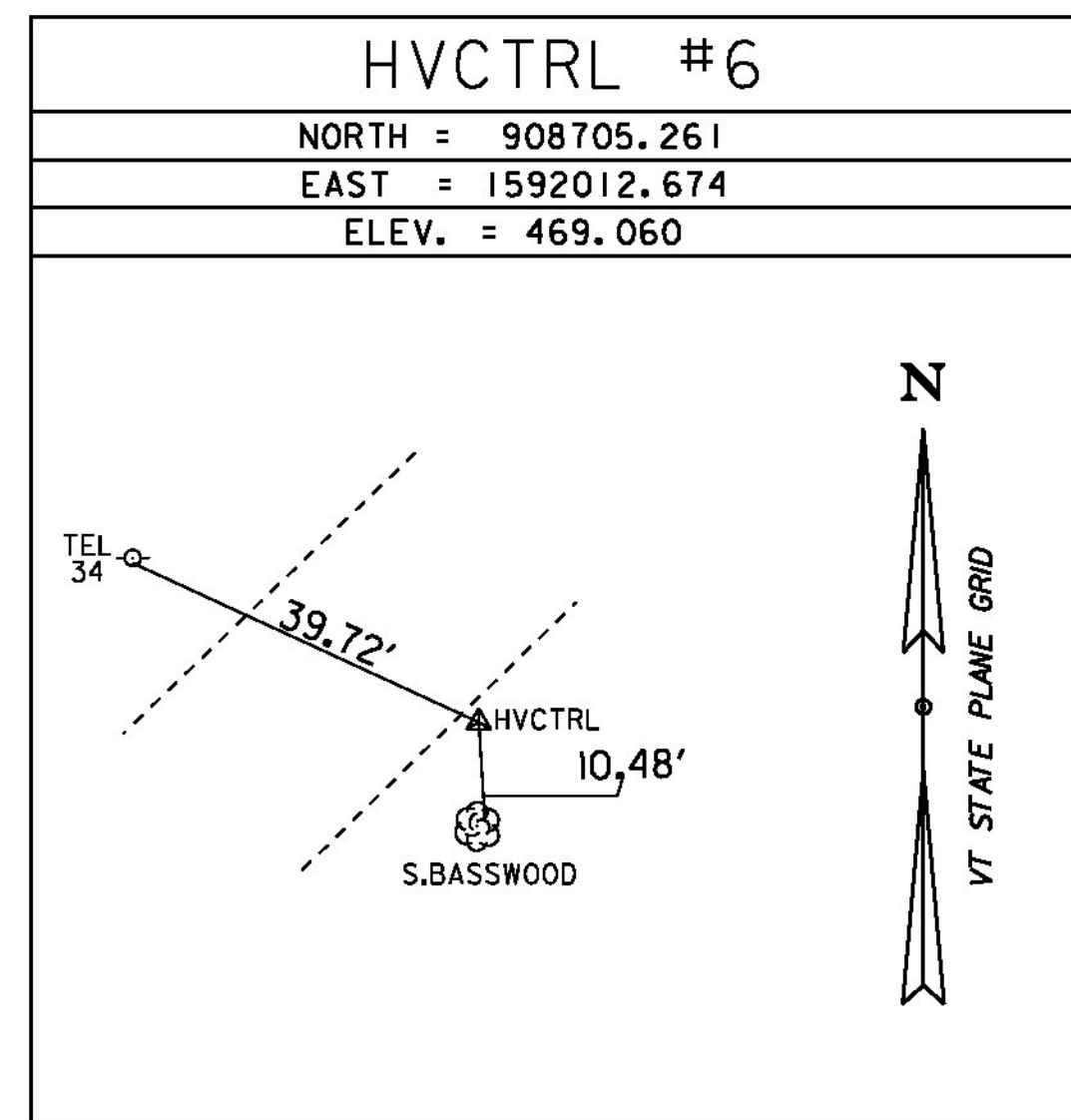
--- HVCTRL #1 ---
 5600 VOLTS
 NORTH = 905682.149
 EAST = 1595379.726
 ELEV. = 485.449

STATION MARK IS A VERTICAL CONTROL DISK WITH SETTING: STAINLESS STEEL ROD W/O SLEEVE (10 FT.+) DISK FROM: NGS THE MARK IS STAMPED: U 49 1978 SATELLITE; THE SITE IS SUITABLE FOR GPS OBSERVATIONS PGI387' RECOVERED IN GOOD CONDITION. IT IS 0.8 M (2.6 FT) NORTHWEST OF A PGI387' STEEL WITNESS POST.

--- HVCTRL #2 ---
 U 49
 NORTH = 906242.748
 EAST = 1593803.722
 ELEV. = 446.210

GENERAL LOCATION, RICHFORD, VT. TO REACH FROM THE INTERSECTION OF VT ROUTE 105 AND VT ROUTE 139 IN RICHFORD VILLAGE GO SOUTHEAST ALONG VT ROUTE 105 FOR 0.2 MI (0.3 KM) TO THE INTERSECTION OF NOYES STREET LEFT, TURN LEFT AND GO SOUTH ALONG NOYES STREET FOR 0.4 MI (0.6 KM) TO THE INTERSECTION OF A PAVED DRIVE LEADING TO STAIRS UNLIMITED INC. CONTINUE STRAIGHT AHEAD AND GO SOUTHWEST ALONG NOYES STREET FOR ABOUT 20 M (65.6 FT) TO THE SITE OF THE MARK ON THE RIGHT. THE MARK IS SET FLUSH WITH GROUND SURFACE IN THE TOP OF A 30 CM DIAMETER CONCRETE MONUMENT POURED 1.3 M (4.3 FT) DEEP. THE MARK IS 6.9 M (22.6 FT) NORTHWEST OF AND ABOUT 1.0 M (3.3 FT) LOWER THAN THE CENTERLINE OF NOYES STREET, 15.2 M (49.9 FT) WEST NORTHWEST OF AN UNNUMBERED POLE, 18.1 M (59.4 FT) WEST OF A CAST IRON GATE POST WITH AN ATTACHED MAILBOX, 46.3 M (151.9 FT) WEST SOUTHWEST OF THE WEST CORNER OF AN ELL ON THE STAIRS UNLIMITED INC. BUILDING, AND 1.2 M (3.9 FT) SOUTHEAST OF A 5600 VOLT ELECTRIC FENCE AND A FIBERGLASS WITNESS POST.

TRAVERSE TIES



* Main Traverse Completed 4/17/09 by R. Bulllock P.C. & R. Bockus

ALIGNMENT TIES

TOWN HIGHWAY 3			
	STATION	NORTHING	EASTING
	PC 40+00.00	909322.5958	1592404.8065
	PI 41+86.52	909490.0381	1592486.9783
	Radius:	6500.00	
	Delta:	3°17'14.35" Right	
	Degree of Curvature(Arc):	0°52'53.30"	
	Length:	372.93	
	Tangent:	186.52	
	Chord:	372.88	
	Middle Ordinate:	2.67	
	External:	2.68	
	PT 43+72.93		
	PC 45+24.77		
	PI 47+35.93		
	Radius:	2600.00	
	Delta:	9°17'10.58" Right	
	Degree of Curvature(Arc):	2°12'13.26"	
	Length:	421.40	
	Tangent:	211.16	
	Chord:	420.94	
	Middle Ordinate:	8.53	
	External:	8.56	
	PT 49+35.62		
	POE 49+46.16		

DATUM	
VERTICAL	NAVD 88
HORIZONTAL	NAD 83 (1996)
ADJUSTMENT	TRAVERSE

PROJECT NAME:	RICHFORD	PLOT DATE:	11-DEC-2014
PROJECT NUMBER:	BRF 0302(29)	DRAWN BY:	S. DONOVAN
FILE NAME:	s12j158+1e.dgn	CHECKED BY:	H. SALLS
PROJECT LEADER:	C. CARLSON	TIE	SHEET 9 OF 36