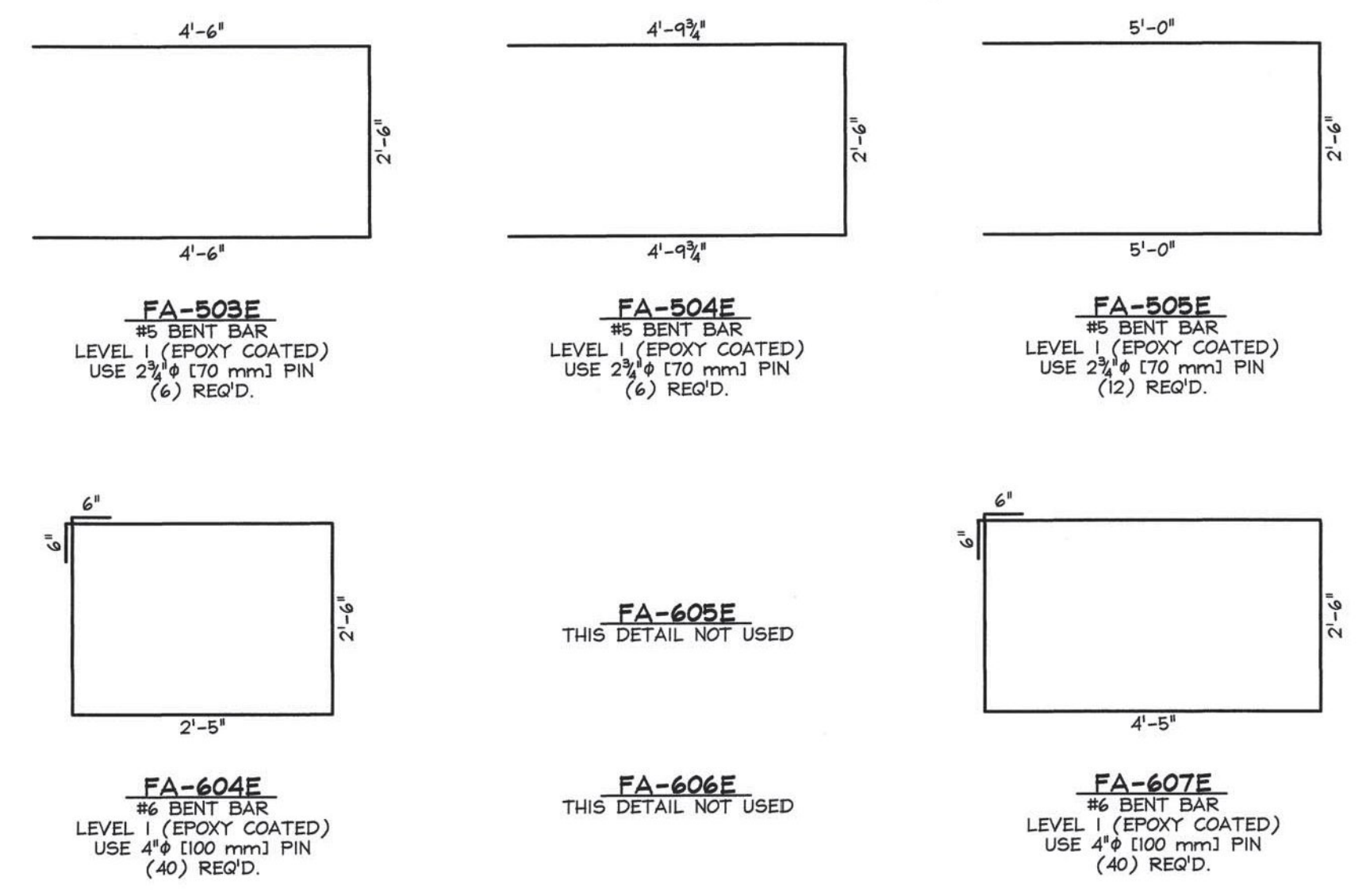
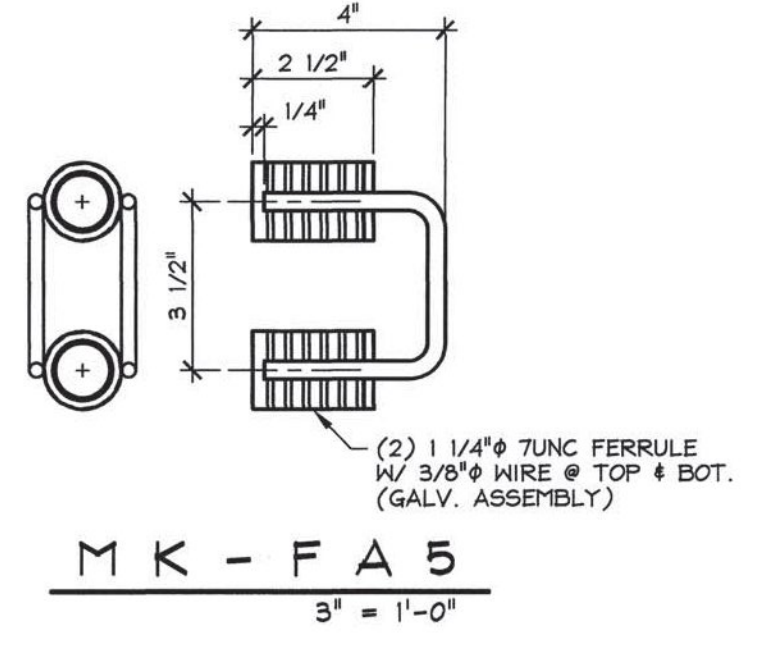
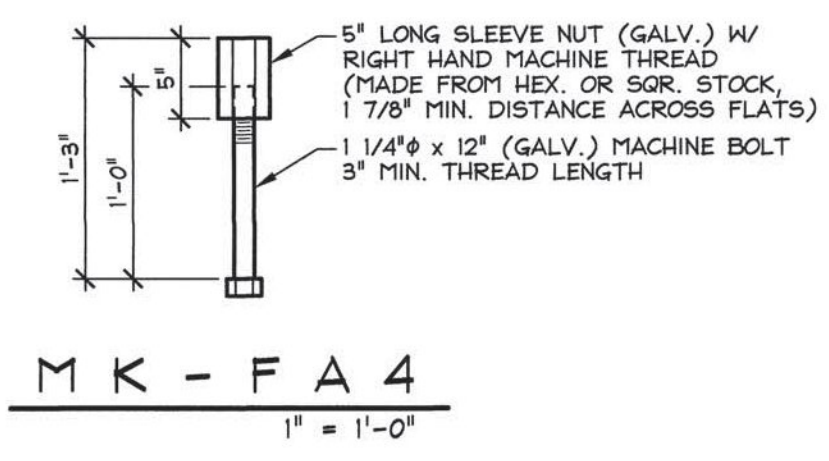
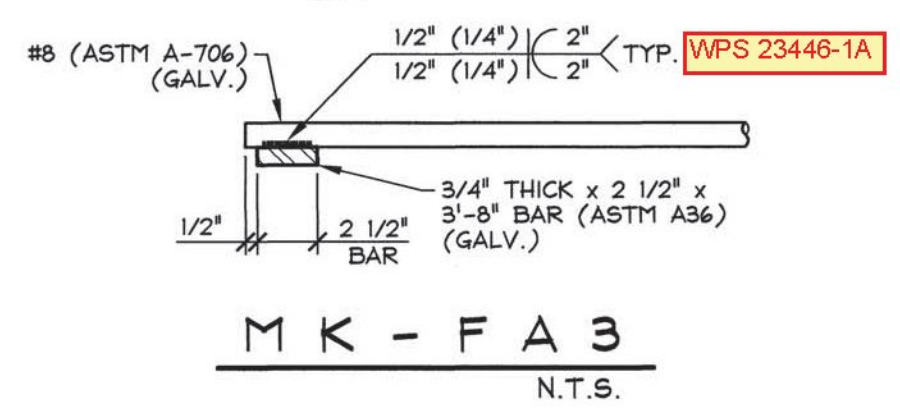
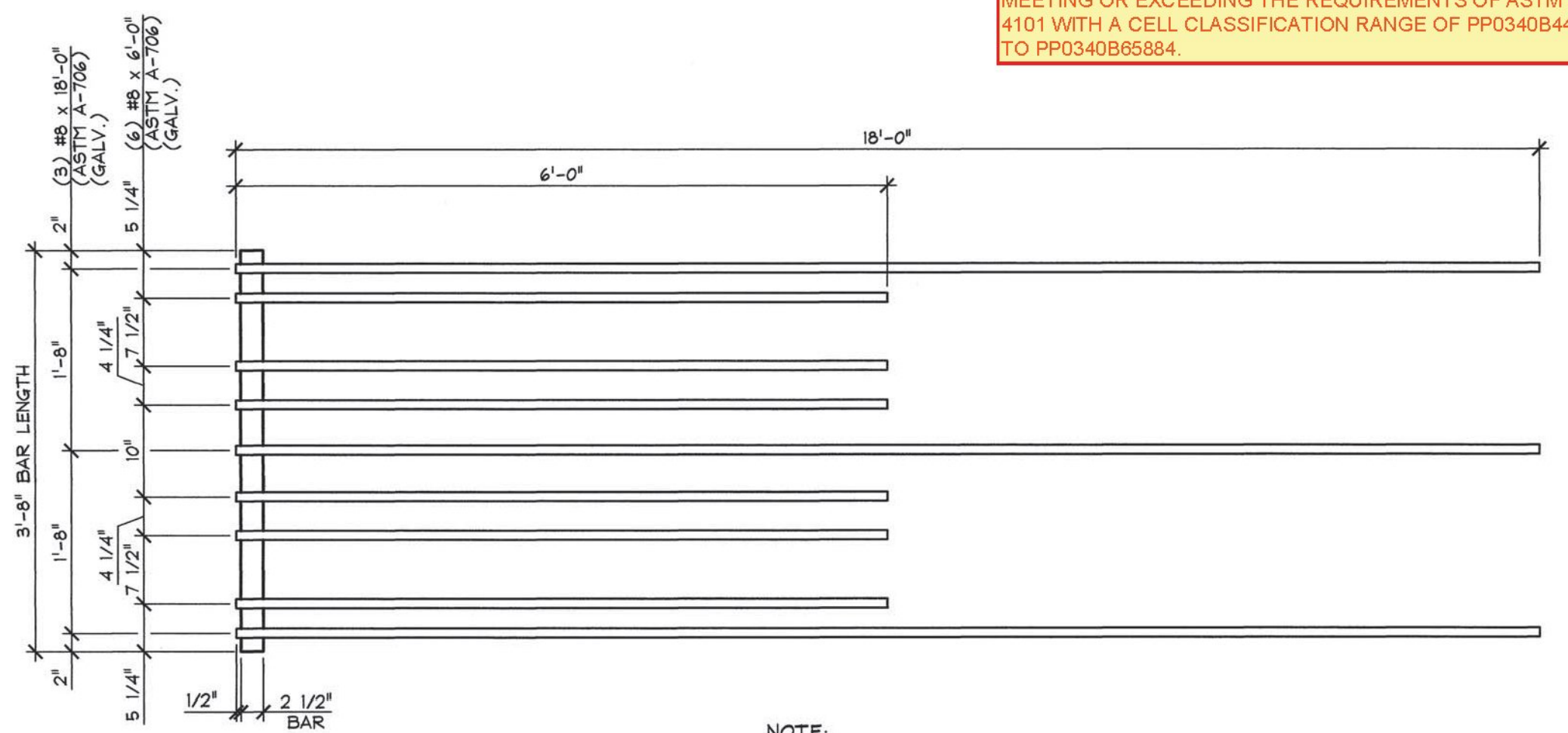
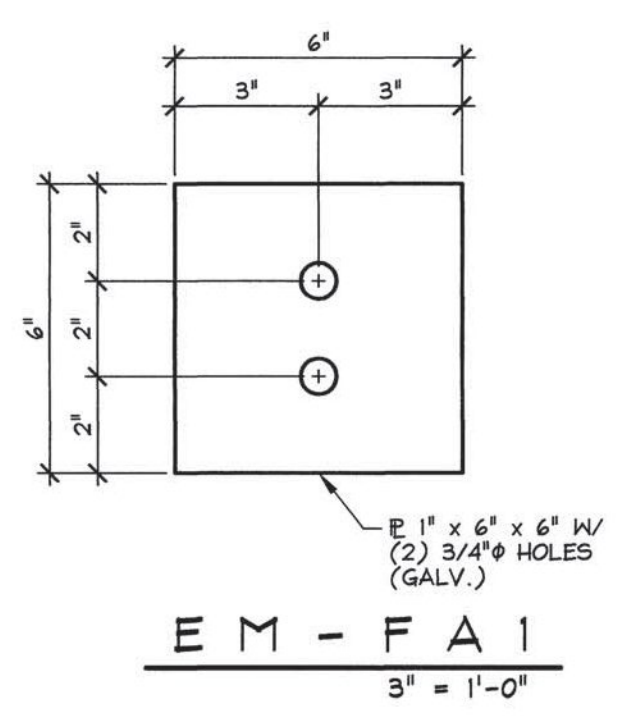


PRESTRESSED SOLID SLABS



PRECAST ABUTMENTS



Material requirements per note 20 sheet 40/69 of contract plans: CORRUGATED POST-TENSIONING DUCTS IN THE PRESTRESSED SLABS FOR ANCHOR BOLT CONNECTIONS SHALL BE CONSTRUCTED FROM EITHER POLYETHYLENE OR POLYPROPYLENE. THE DUCT SHALL HAVE A MINIMUM MATERIAL THICKNESS OF 0.080 IN. +/- 0.010 IN. AND SHALL HAVE A WHITE COATING ON THE OUTSIDE OR SHALL BE OF WHITE MATERIAL WITH ULTRAVIOLET STABILIZERS ADDED. POLYETHYLENE DUCT SHALL BE FABRICATED FROM RESINS MEETING OR EXCEEDING THE REQUIREMENTS OF ASTM D 3350 WITH A CELL CLASSIFICATION OF 345464A. POLYPROPYLENE DUCT SHALL BE FABRICATED FROM RESINS MEETING OR EXCEEDING THE REQUIREMENTS OF ASTM D 4101 WITH A CELL CLASSIFICATION RANGE OF PP0340B44544 TO PP0340B65884.

NOTE: AFTER MK-FA3 ASSEMBLY HAS BEEN GALVANIZED, ENTIRE ASSEMBLY SHALL BE COATED WITH TWO PART EPOXY REPAIR MATERIAL IN ACCORDANCE WITH LEVEL II, DUAL COATED REINFORCING STEEL MANUFACTURER INSTRUCTIONS.

MISCELLANEOUS MATERIALS				
ITEM	MARK	QTY.	DESCRIPTION	REMARKS
1	EM-FA1	16	6' x 6' x 6' W/ (2) 3/4" HOLES (GALV.)	FOR ERECTION; SEE DETAIL THIS SHEET
2		16	0.60" x 270 KSI x 18'-9" LONG POLY-STRAND	FOR ERECTION
3		32	0.60" SINGLE USE STRESSING CHUCK	FOR ERECTION
4				
5				
6		20	#4 x 46'-2" (LEVEL I, EPOXY COATED)	
7				
8				
9	MK-FA3	8	ANCHOR BAR 3/4" THICK x 2 1/2" x 3'-8" (ASTM A36) W/ (3) #8 x 18'-0" (ASTM A-706) (GALV.)	GALVANIZED ASSEMBLY, SEE DETAIL THIS SHEET
10	MK-FA4	32	5" LG. SLEEVE NUT (GALV.) #1 1/4" x 12" MACHINE BOLT	GALVANIZED, SEE DETAIL THIS SHEET
11	MK-FA5	16	2-BOLT FERRULE GUARD RAIL INSERT 1 1/4" TUNC	GALVANIZED, SEE DETAIL THIS SHEET
12		16	8T x 13 3/8" SHIFT LIFT LIFTER	GALVANIZED
13		32	4" x 1'-5" CORRUGATED PLASTIC ANCHOR DOWEL SLEEVE	
14				
15				
16		28	#5 x 25'-6" (LEVEL I, EPOXY COATED)	
17		20	#5 x 4'-7 3/4" (LEVEL I, EPOXY COATED)	
18				
19		1	BRIDGE PLAQUE	SUPPLIED BY OTHERS
20		8	8" x 3'-2" (MAX.) CORRUGATED STEEL SLEEVE	GALVANIZED, AASHTO M 36, TYPE 1
21		8	8" x 5'-2" (MAX.) CORRUGATED STEEL SLEEVE	GALVANIZED, AASHTO M 36, TYPE 1
22		4	2'-0" x 3'-2 3/4" CORRUGATED STEEL SLEEVE	GALVANIZED, AASHTO M 36, TYPE 1
23		4	2'-0" x 5'-2 3/4" CORRUGATED STEEL SLEEVE	GALVANIZED, AASHTO M 36, TYPE 1
24		4	SET OF (4) 0.60" x 270 KSI STRAND LIFTING LOOPS	
25				

Vermont Agency of Transportation
RECEIVED
 CK'D BY RK/JW OK'D BY RY
 February 12, 2015
 RESUBMIT No Approved AsNoted
 BY RY DATE 02/12/2015

APPROVAL STAMP:	J.P. CARRARA & SONS INC. Precast & Prestress Manufacturer 284 GSE STR. MIDDLEBURY, VERMONT 05753 Phone:(802)388-6361 Fax:(802)388-9010	A.L. ST. ONGE CONTRACTOR MONTMERY, VERMONT
STATE OF VERMONT AGENCY OF TRANSPORTATION COUNTY OF FRANKLIN		DATE: NOV. 10, 2014
TOWN OF FAIRFIELD ELM BROOK ROAD, TOWN HIGHWAY 47 (CLASS 3) BRIDGE NO.: 46 PROJECT NO.: BRO 1448(41)		SCALE: NOTED
MATERIALS LIST		CHKD: B.C. DFTM: B.L. JOB NO: 23446-014
		DWG. NO: M2