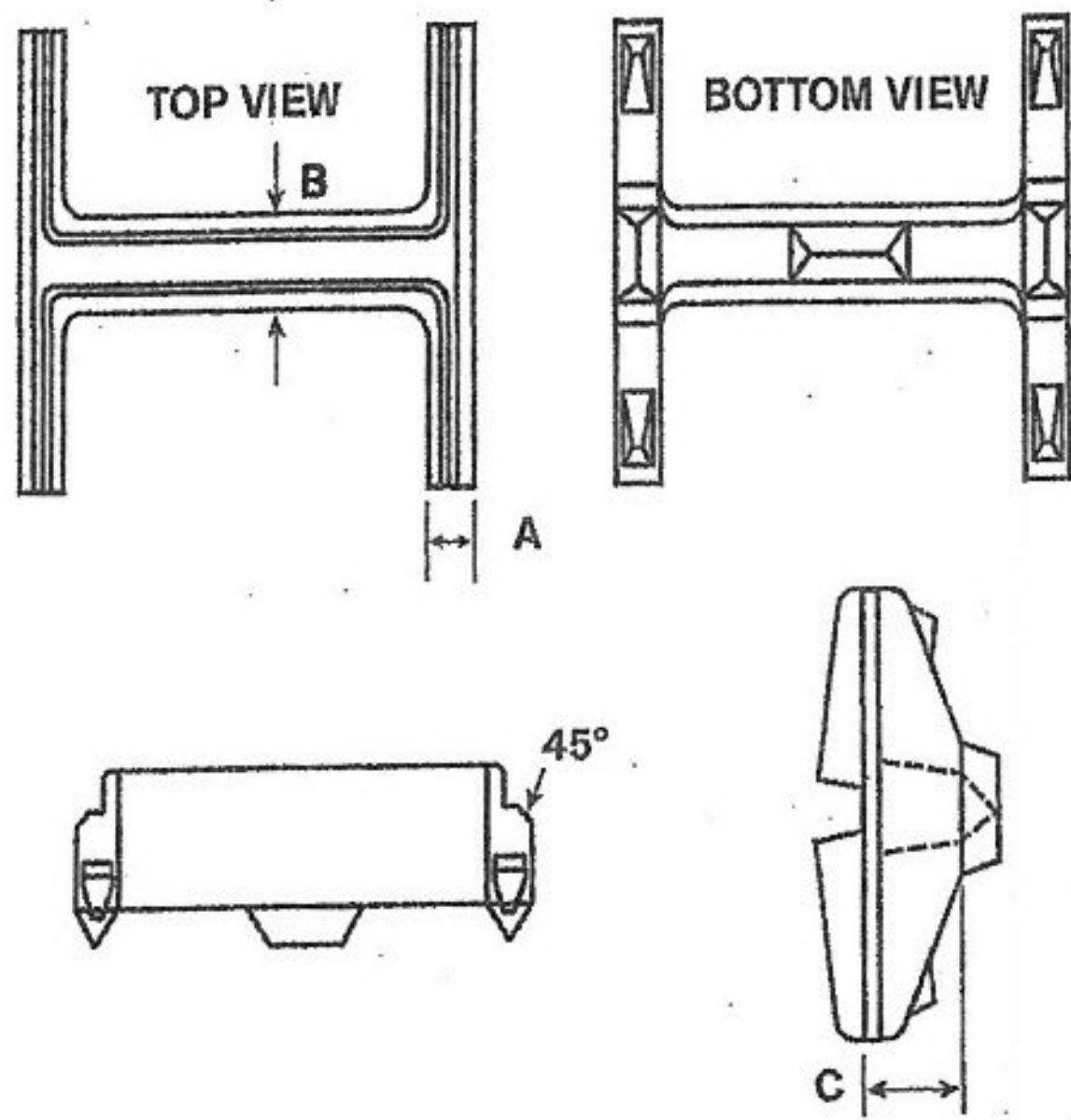


# HARD-BITE™ – HP-77600-B 30#

## Dimensions



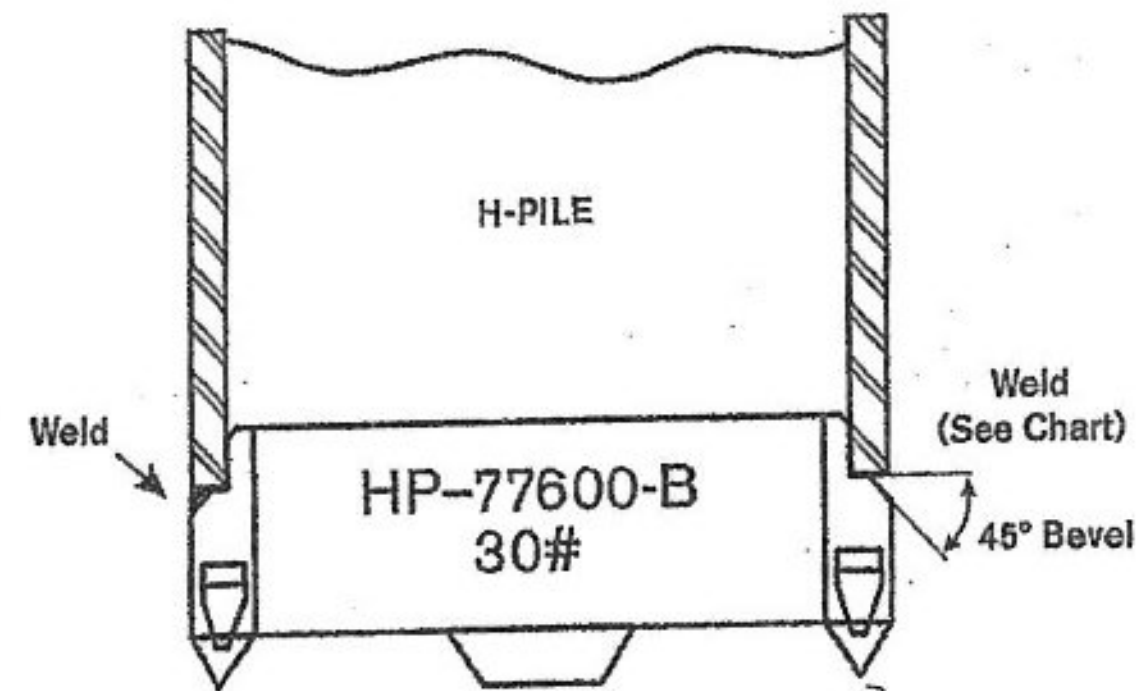
**MATERIAL: CAST STEEL**

ASTM A148 90/60

	12"
A	1"
B	1-5/16"
C	3"
Wt.	31#

## Installation Instructions

1. Fit point onto the end of the square cut pile end.
2. Weld point to the pile in either flat or vertical position using E7018 electrodes.
3. Weld across full width of flange following chart below for minimum size weld.



Pile Size	Flange Thickness	Groove Weld
HP 12 x 84	.685	3/8
x 74	.610	3/8
x 63	.515	5/16
x 53	.435	5/16

Vermont Agency of Transportation

**RECEIVED**

CK'D BY \_\_\_\_\_ OK'D BY JC

May 29, 2015

RESUBMIT NO Approved

BY RY DATE 6-1-2015



**ASSOCIATED PILE & FITTING**

PO Box 5933 Parsippany, NJ 07054-5933  
 Tel: 973-773-8400  
 Fax: 973-428-5146  
 email: apf@associatedpile.com  
 www.associatedpile.com  
 Call Toll Free: 800-526-9047