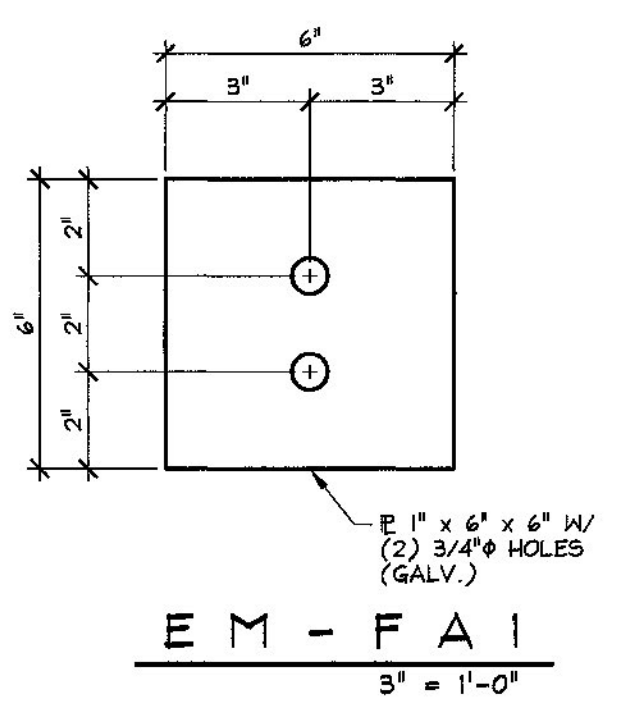
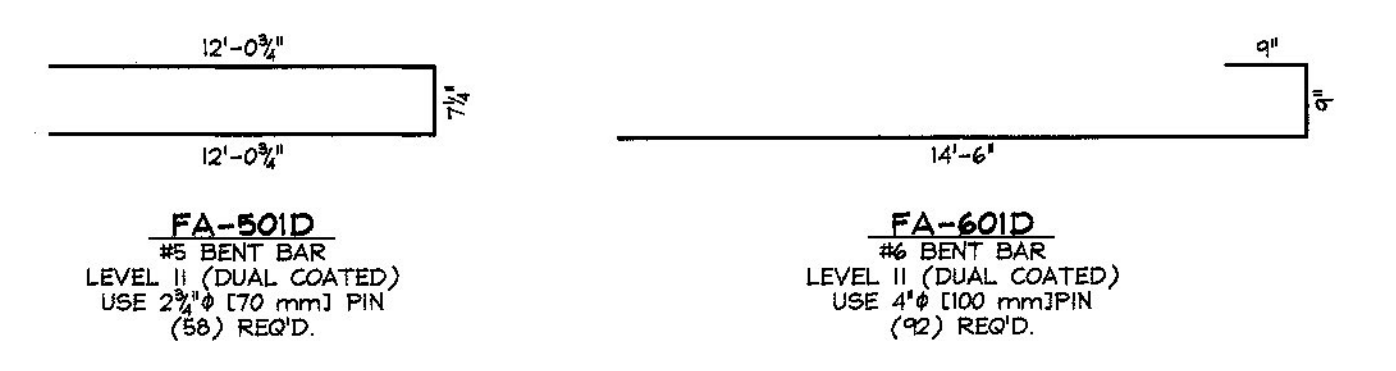


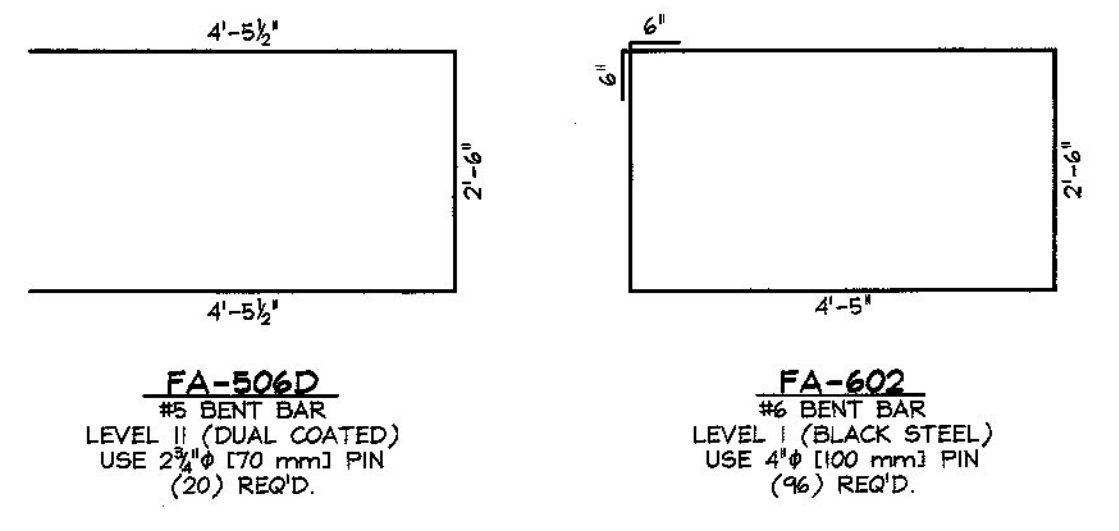
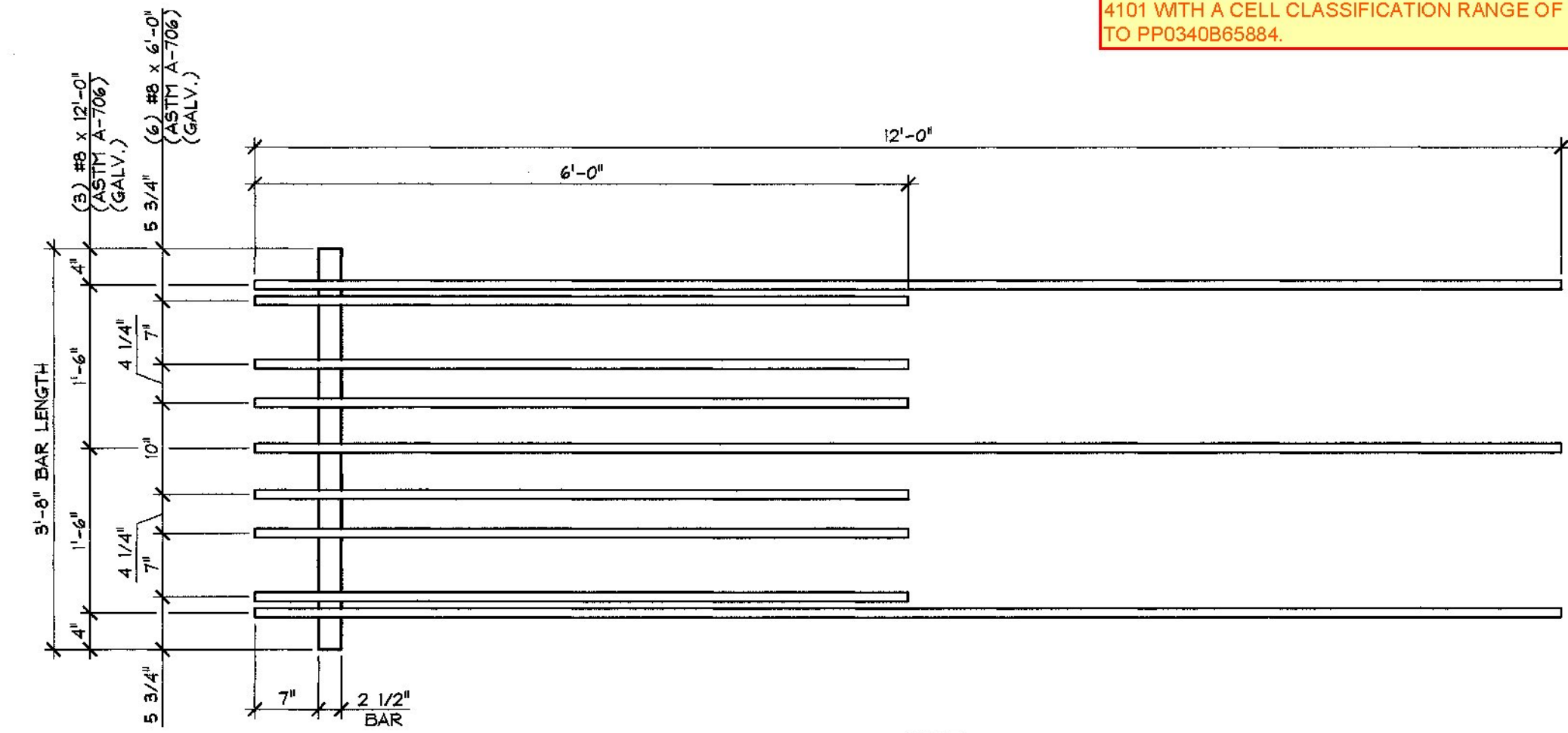
PRESTRESSED SOLID SLABS



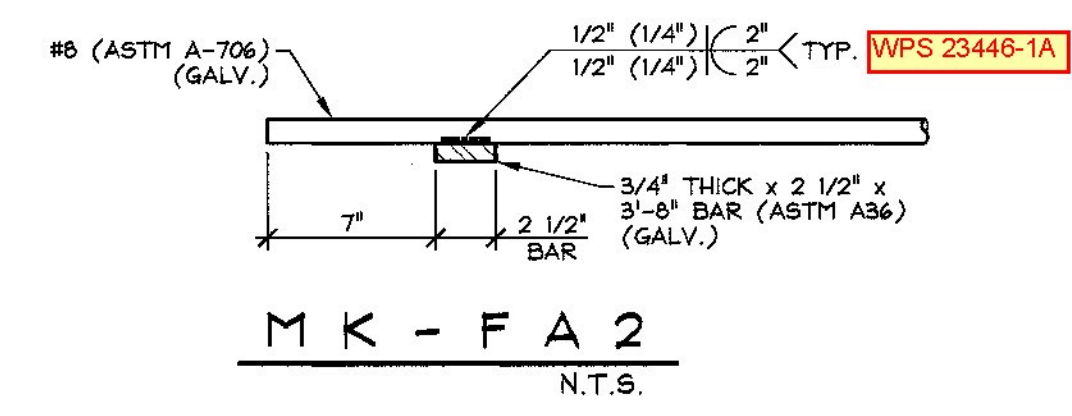
Material requirements per note 20, sheet 8/09 of contract plans. CORRUGATED POST-TENSIONING DUCTS IN THE PRESTRESSED SLABS AND PRECAST APPROACH SLABS FOR ANCHOR BOLT AND DOWEL CONNECTIONS SHALL BE CONSTRUCTED FROM EITHER POLYETHYLENE OR POLYPROPYLENE. THE DUCT SHALL HAVE A MINIMUM MATERIAL THICKNESS OF 0.080 IN. +/- 0.010 IN. AND SHALL HAVE A WHITE COATING ON THE OUTSIDE OR SHALL BE OF WHITE MATERIAL WITH ULTRAVIOLET STABILIZERS ADDED. POLYETHYLENE DUCT SHALL BE FABRICATED FROM RESINS MEETING OR EXCEEDING THE REQUIREMENTS OF ASTM D 3350 WITH A CELL CLASSIFICATION OF 345484A. POLYPROPYLENE DUCT SHALL BE FABRICATED FROM RESINS MEETING OR EXCEEDING THE REQUIREMENTS OF ASTM D 4101 WITH A CELL CLASSIFICATION RANGE OF PP0340B44544 TO PP0340B65884.



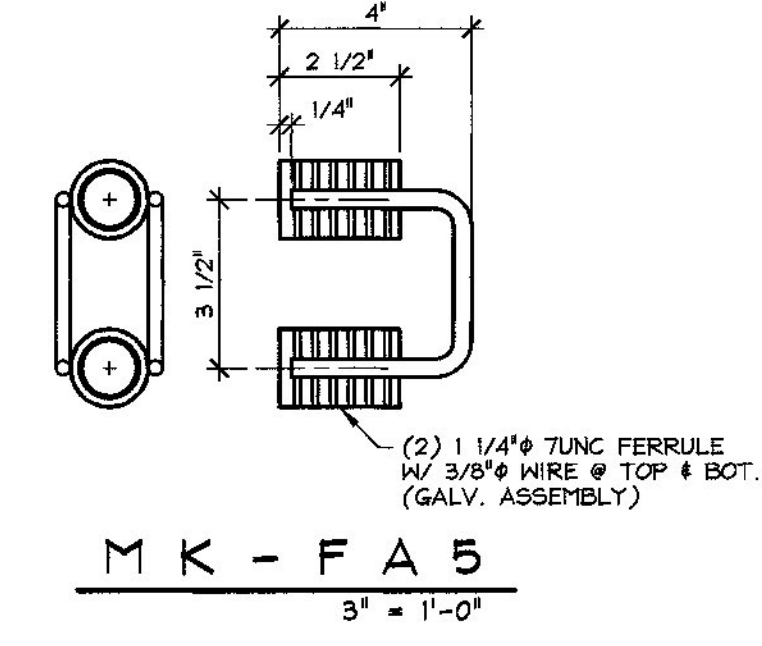
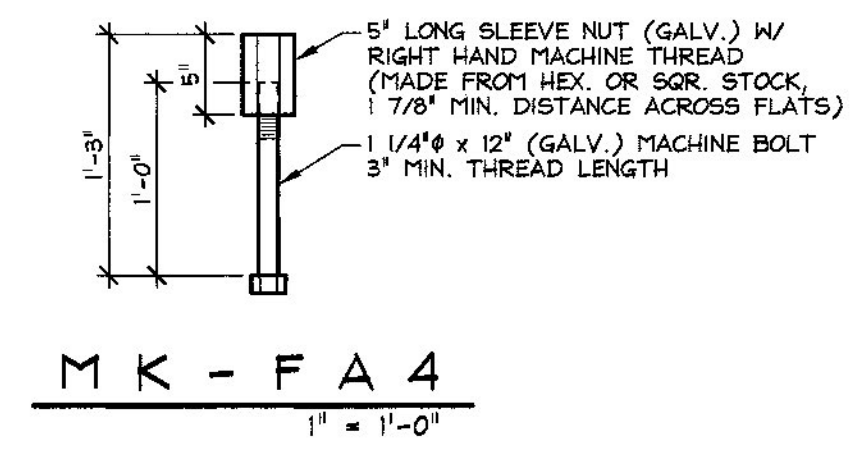
PRECAST APPROACH SLABS



PRECAST ABUTMENTS



NOTE: AFTER MK-FA2 ASSEMBLY HAS BEEN GALVANIZED, ENTIRE ASSEMBLY SHALL BE COATED WITH TWO PART EPOXY REPAIR MATERIAL IN ACCORDANCE WITH LEVEL II, DUAL COATED REINFORCING STEEL MANUFACTURER INSTRUCTIONS.



MISCELLANEOUS MATERIALS				
ITEM	MARK	QTY.	DESCRIPTION	REMARKS
1	EM-FA1	8	1" x 6" x 6" W/ (2) 3/4" HOLES (GALV.)	FOR ERECTION, SEE DETAIL THIS SHEET
2		8	0.60" x 270 KSI x 26'-0" LONG POLY-STRAND	FOR ERECTION
3		16	0.60" SINGLE USE STRESSING CHUCK	FOR ERECTION
4				
5				
6		30	#4 x 36'-2" (LEVEL II, DUAL COATED)	
7				
8	MK-FA2	12	ANCHOR BAR 3/4" THICK x 2 1/2" x 3'-0" (ASTM A36) W/ (3) #8 x 12'-0" & (6) #8 x 6'-0" (ASTM A-706)	GALVANIZED ASSEMBLY, 4 TWO PART EPOXY COATED (SEE DETAIL THIS SHEET)
9	MK-FA4	28	5" LG. SLEEVE NUT (GALV.) & 1 1/4" x 12" MACHINE BOLT	GALVANIZED, SEE DETAIL THIS SHEET
10	MK-FA5	14	2-BOLT FERRULE GUARD RAIL INSERT 1 1/4" x 7UNC	GALVANIZED, SEE DETAIL THIS SHEET
11		24	8T x 10" SWIFT LIFT LIFTERS	Galvanized
12		48	4" x 11" CORRUGATED PLASTIC SLEEVE	
13				
14		48	#6 x 14'-6" (LEVEL II, DUAL COATED)	
15				
16		16	8T x 6 3/4" SWIFT LIFT LIFTER	GALVANIZED
17		48	4" x 1'-3" CORRUGATED PLASTIC SLEEVE	
18				
19				
20				
21				
22				
23		36	#5 x 31'-6" (LEVEL I, BLACK STEEL)	
24		16	#5 x 3'-4 1/2" (LEVEL II, DUAL COATED)	
25				
26		48	#6 x 2'-11" (LEVEL II, DUAL COATED)	
27				
28		1	BRIDGE PLAQUE	SUPPLIED BY OTHERS
29		32	6" x 5'-1 3/4" (MAX.) CORRUGATED STEEL SLEEVE	GALVANIZED, AASHTO M 36, TYPE I
30		8	2'-0" x 5'-1 1/2" CORRUGATED STEEL SLEEVE	GALVANIZED, AASHTO M 36, TYPE I
31		4	SET OF (4) 0.60" x 270 KSI STRAND LIFTING LOOPS	
32				
33				
34				
35				

Vermont Agency of Transportation
RECEIVED
 CK'D BY RK/JW OK'D BY RY
 February 12, 2015
 RESUBMIT No Approved AsNoted
 BY RY DATE 02/12/2015

2-10-15 REVISED PER VT AOT COMMENTS

APPROVAL STAMP:	J.P. CARRARA & SONS INC. Precast & Prestress Manufacturer 3464 GSE STR., MIDDLEBURY, VERMONT 05753 Phone: (802) 388-6361 Fax: (802) 388-9010	A.L. ST. ONGE CONTRACTOR MONTGOMERY, VERMONT
STATE OF VERMONT AGENCY OF TRANSPORTATION COUNTY OF FRANKLIN		DATE: NOV. 10, 2014
TOWN OF FAIRFIELD SOUTH ROAD, FAS 0281 (RURAL MAJOR COLLECTOR) BRIDGE NO.: 14 PROJECT NO.: BRP 0281(25)		SCALE: NOTED
MATERIALS LIST		CHKD: B.C. DFTM: B.L. JOB NO: 23446-014
		DWG. NO: M1