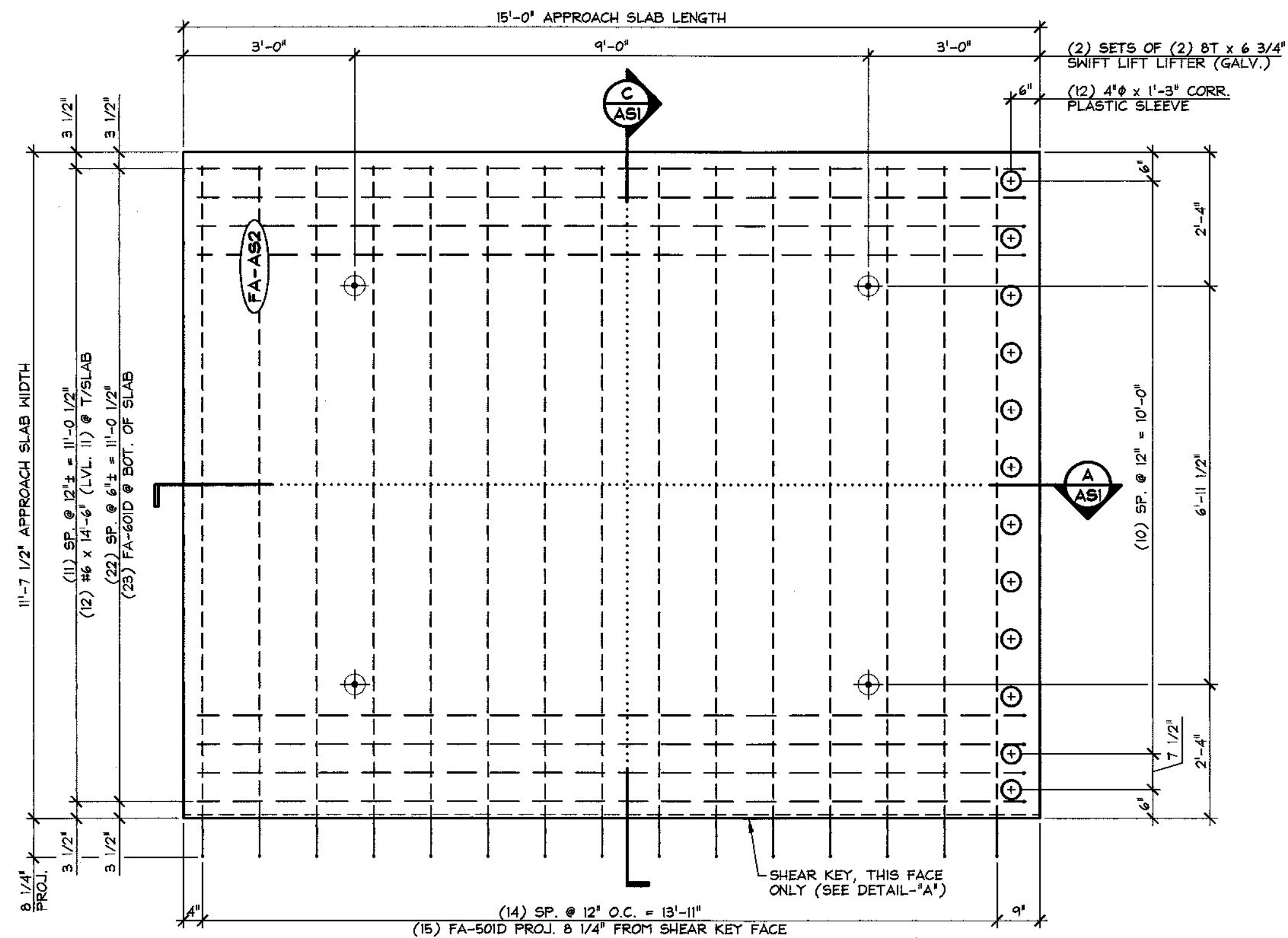
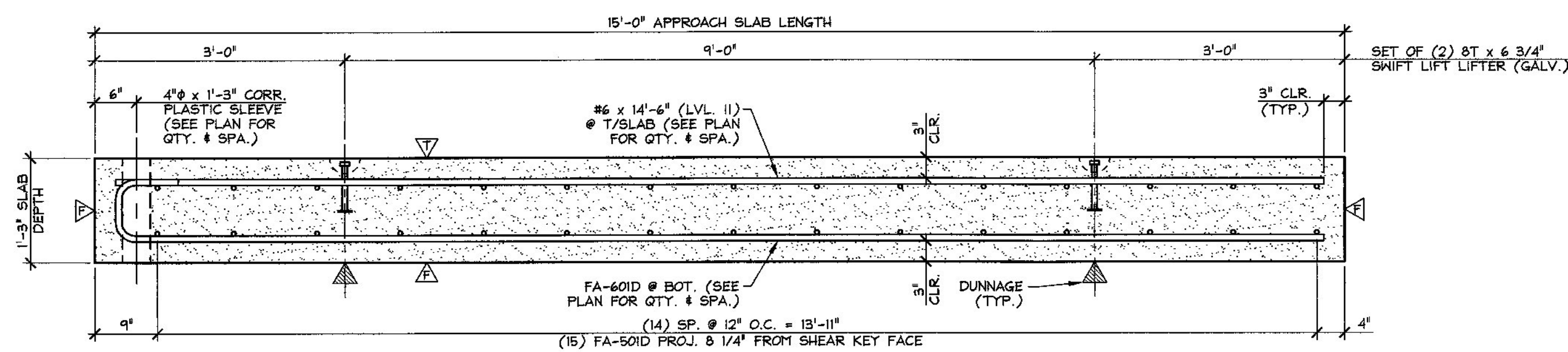


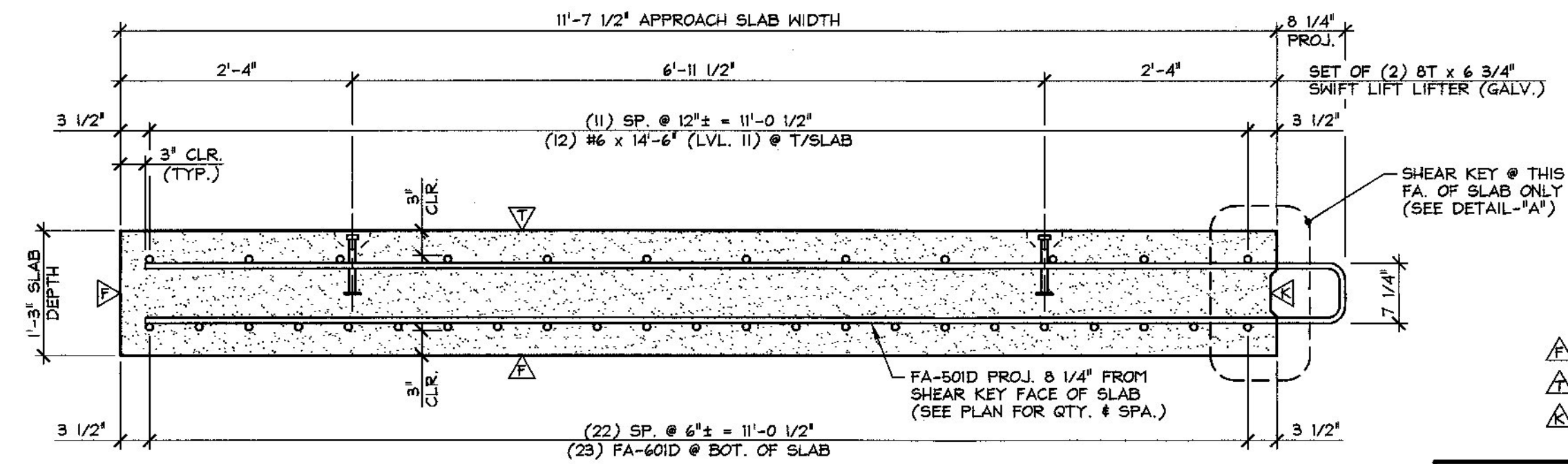
1 DIMENSIONAL PLAN VIEW IN FORM
ASI
1/2" = 1'-0"



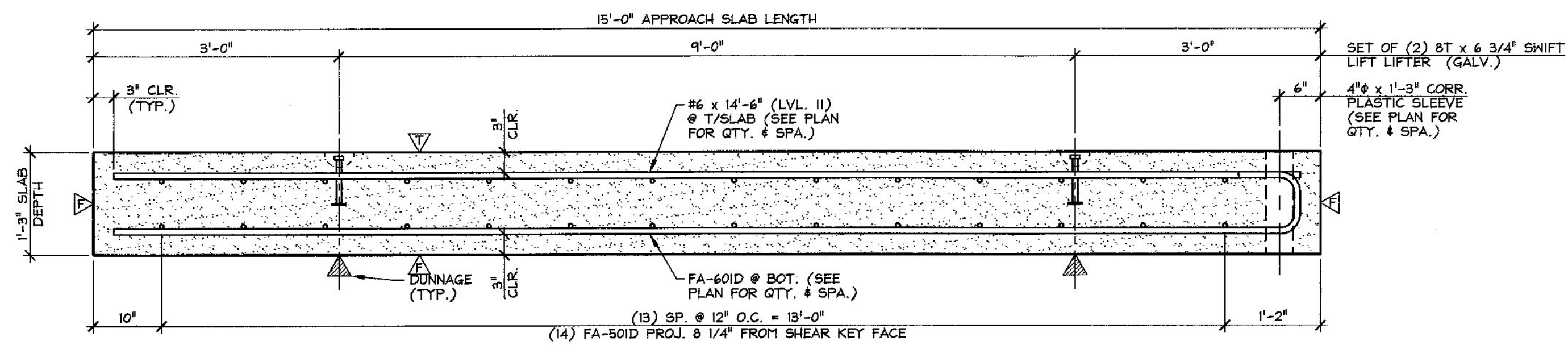
2 DIMENSIONAL PLAN VIEW IN FORM
ASI
1/2" = 1'-0"



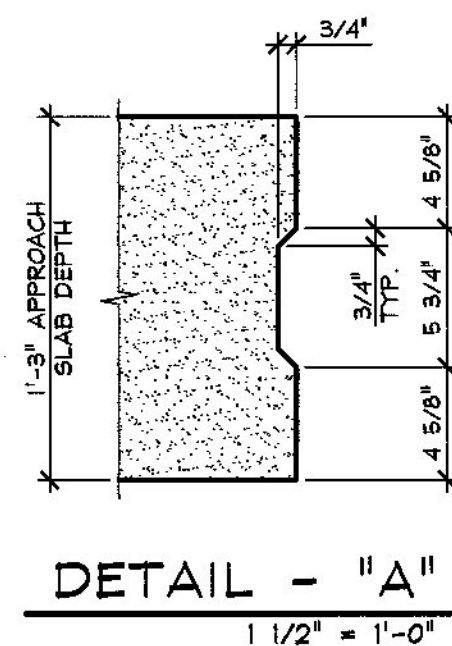
A LONGITUDINAL SECTION
ASI
3/4" = 1'-0"



C TRANSVERSE SECTION
ASI
3/4" = 1'-0"



B LONGITUDINAL SECTION
ASI
3/4" = 1'-0"



DETAIL - "A"
1 1/2" = 1'-0"

Vermont Agency of Transportation
RECEIVED

CK'D BY RK/JW OK'D BY RY

February 12, 2015

RESUBMIT No Approved

BY RY DATE 02/12/2015

- △ DENOTES FORM FINISH
- △ DENOTES FLOAT FINISH
- △ DENOTES ROUGHENED FINISH

MARK: FA-ASI	QTY.: 2	WT.: 16.32 T	VOL.: 8.06 cy
MARK: FA-AS2	QTY.: 2	WT.: 16.32 T	VOL.: 8.06 cy

MATERIAL LIST / APPROACH SLAB				
ITEM	MARK	DESCRIPTION	QTY./SLAB	
			ASI	AS2
1	FA-50ID	#5 BENT BAR (LEVEL II, DUAL COATED)	14	15
2				
3	FA-60ID	#6 BENT BAR (LEVEL II, DUAL COATED)	23	23
4		#6 x 14"-6" (LEVEL II, DUAL COATED)	12	12
5				
6				
7				
8		4" x 1'-3" CORRUGATED PLASTIC SLEEVE	12	12
9		8T x 6 3/4" SWIFT LIFT LIFTER (GALV.)	4	4
10				

2-10-15 REVISED PER VT AOT COMMENTS

APPROVAL STAMP:

J.P. CARRARA & SONS INC.
Precast & Prestress Manufacturer
244 ODE SR., MIDDLEBURY, VERMONT 05753 Phone: (802)388-0361 Fax: (802)388-8010

A.L. ST. ONGE
CONTRACTOR
MONTMERY, VERMONT

STATE OF VERMONT AGENCY OF TRANSPORTATION
COUNTY OF FRANKLIN

DATE: NOV. 10, 2014

SCALE: NOTED

TOWN OF FAIRFIELD
SOUTH ROAD, FAS 0281 (RURAL MAJOR COLLECTOR)
BRIDGE NO.: 14 PROJECT NO.: BRF 0281(25)

CHKD: B.C. DFTM: B.L.

JOB NO: 23446-014

PRECAST APPROACH SLAB DETAILS

DWG. NO: ASI