

ABUTMENT PLAN (PCU)

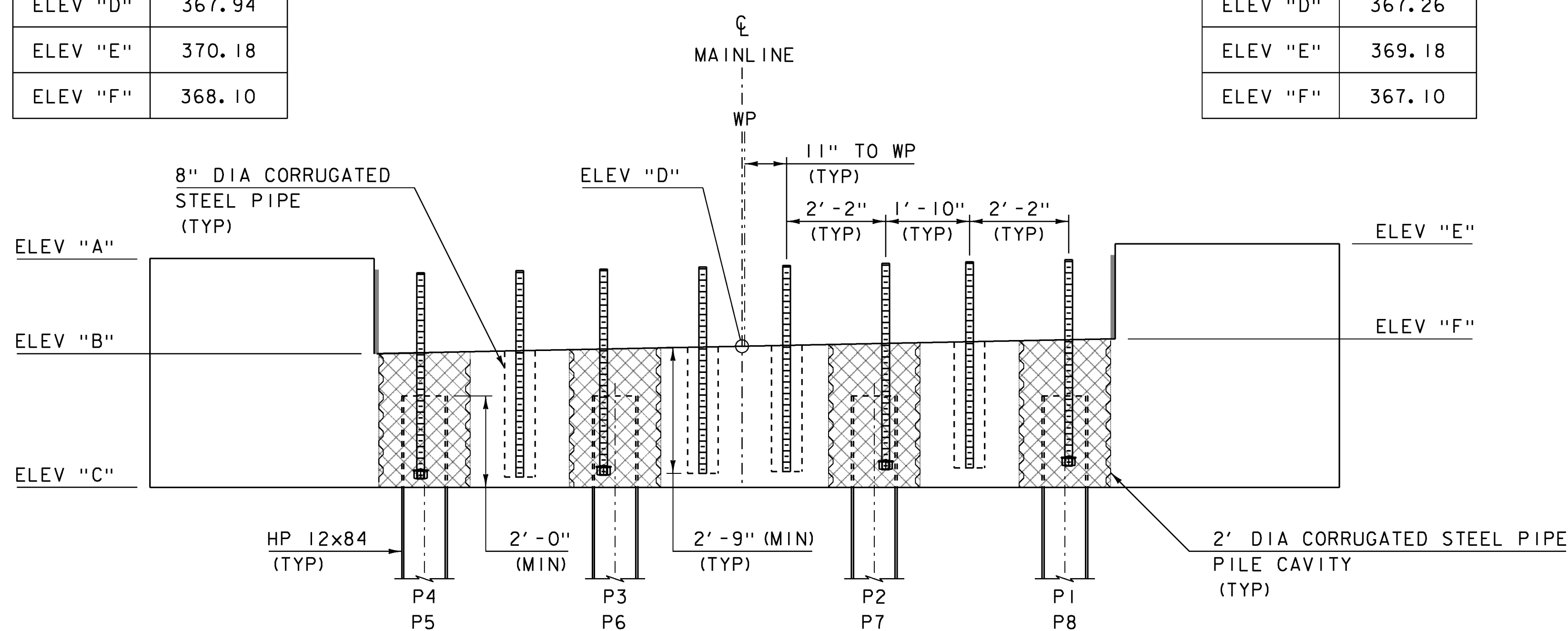
SCALE 1/2" = 1'-0"

PCU 1 ELEVATIONS

| | |
|----------|--------|
| ELEV "A" | 369.86 |
| ELEV "B" | 367.78 |
| ELEV "C" | 364.86 |
| ELEV "D" | 367.94 |
| ELEV "E" | 370.18 |
| ELEV "F" | 368.10 |

PCU 2 ELEVATIONS

| | |
|----------|--------|
| ELEV "A" | 369.50 |
| ELEV "B" | 367.42 |
| ELEV "C" | 362.18 |
| ELEV "D" | 367.26 |
| ELEV "E" | 369.18 |
| ELEV "F" | 367.10 |

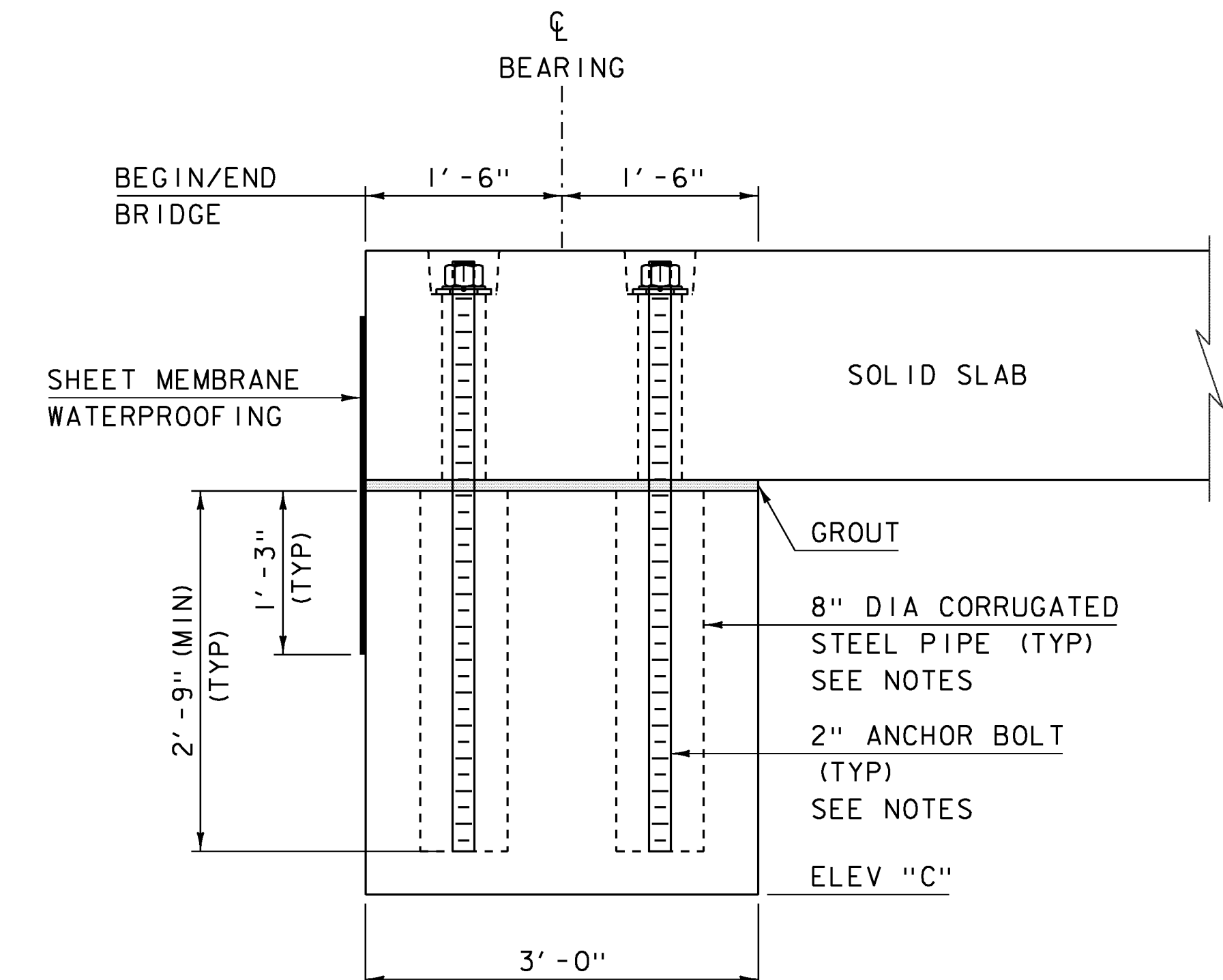


ABUTMENT ELEVATION (PCU)

SCALE 1/2" = 1'-0"

NOTES:

- 1) ANCHOR BOLTS SHALL BE ASTM F1554 GRADE 105.
- 2) ANCHOR BOLTS, NUTS, AND WASHERS SHALL BE GALVANIZED.
- 3) 8" DIA CORRUGATED STEEL PIPES FOR ANCHOR BOLTS SHALL BE PRECAST INTO THE PILE CAPS. DRILLING AND GROUTING ANCHOR BOLTS WILL NOT BE PERMITTED.
- 4) ANCHOR BOLTS, NUTS, WASHERS, AND ANCHOR PLATES SHALL BE PAID FOR UNDER ITEM 506.60, STRUCTURAL STEEL (FPQ).
- 5) GROUT IN 8" DIA CORRUGATED STEEL PIPES FOR ANCHOR BOLTS SHALL HAVE A MINIMUM COMPRESSIVE STRENGTH OF 10 KSI AT 28 DAYS.
- 6) ANCHOR BOLTS LOCATED IN PILE CAVATIES SHALL HAVE A HEAVY HEX NUT AND HARDENED WASHER ON THE BOTTOM END OF EACH ANCHOR BOLT AND SHALL BE SECURED IN THE FINAL POSITION BEFORE THE PILE CAVITY CONCRETE IS PLACED.
- 7) A TEMPLATE SHALL BE USED TO LAYOUT ANCHOR BOLT DUCTS IN THE SOLID SLABS. THE SAME TEMPLATE SHALL BE USED TO LAYOUT ANCHOR BOLT DUCTS AND ANCHOR BOLTS IN THE ABUTMENTS.
- 8) ALL COSTS ASSOCIATED WITH FURNISHING AND INSTALLING SHEET MEMBRANE WATERPROOFING SHALL BE CONSIDERED INCIDENTAL TO THE WORK FOR PRECAST CONCRETE STRUCTURE.
- 9) PCU 1 SHOWN, PCU 2 SIMILAR.



ABUTMENT TYPICAL (PCU)

SCALE 1" = 1'-0"

PROJECT NAME: FAIRFIELD
PROJECT NUMBER: BRO 1448 (4I)

FILE NAME: sl2j170sub.dgn
PROJECT LEADER: R. YOUNG
DESIGNED BY: T. FILLBACH
ABUTMENT PLAN

PLOT DATE: 11-SEP-2014
DRAWN BY: K. FRIEDLAND
CHECKED BY: R. KLINEFELTER
SHEET 59 OF 69