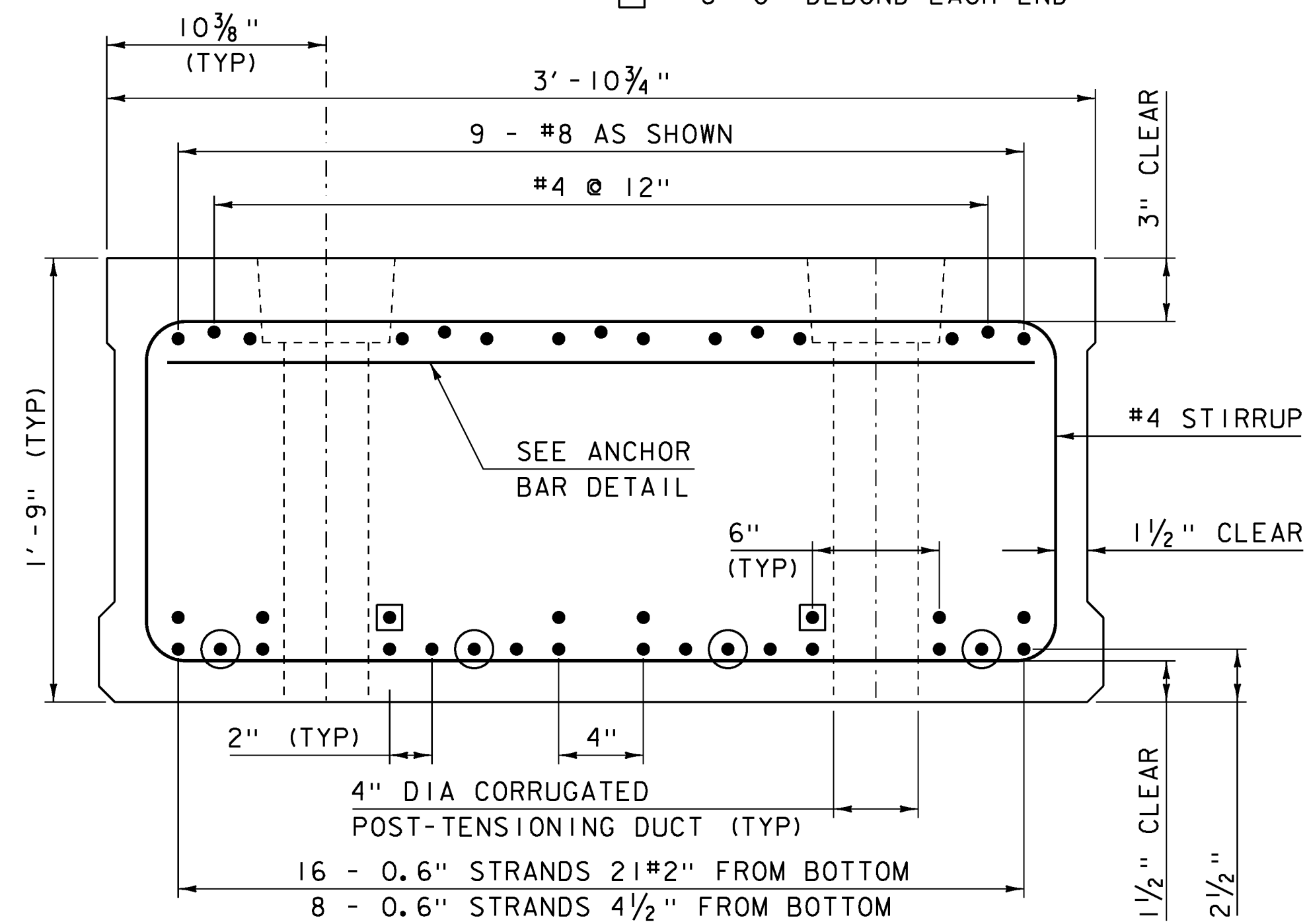


TYPICAL EXTERIOR SECTION

SCALE 2" = 1'-0"

- - 8'-0" DEBOND EACH END
- - 6'-0" DEBOND EACH END

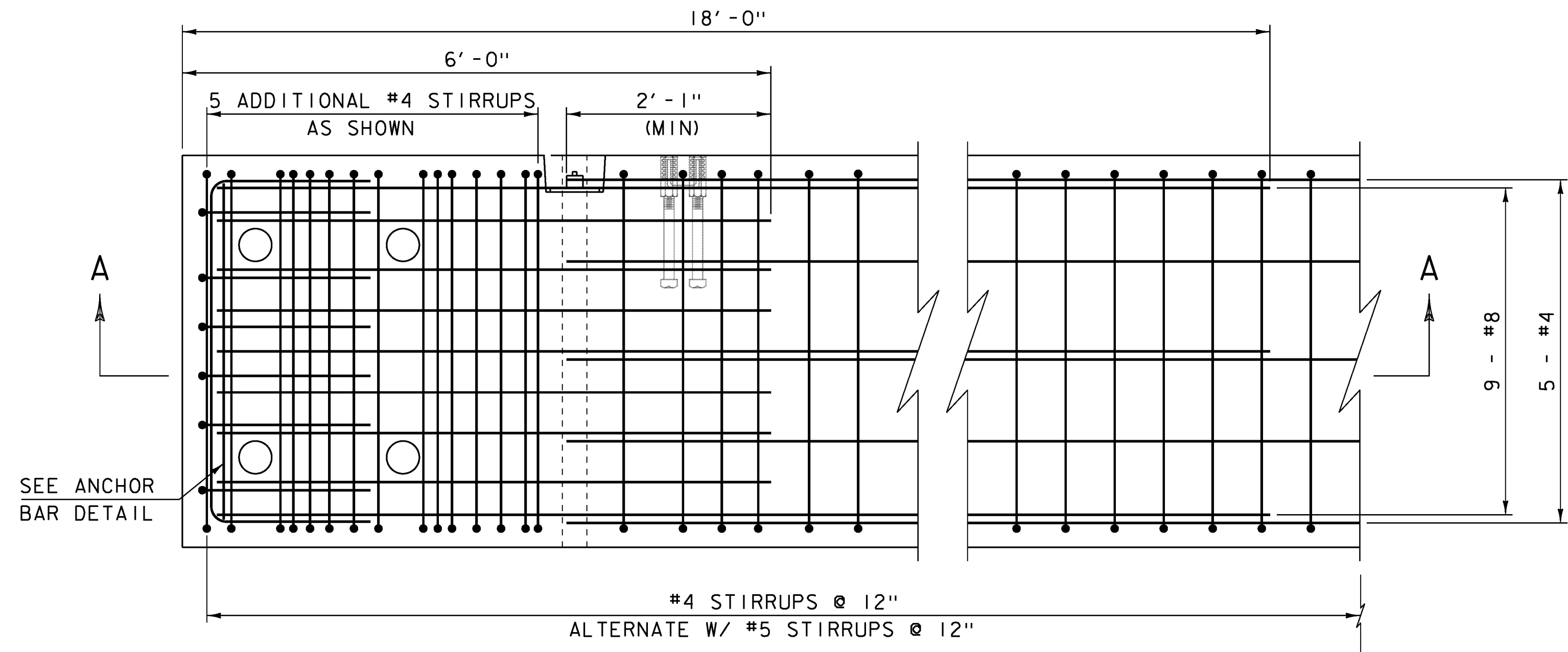


TYPICAL INTERIOR SECTION

SCALE 2" = 1'-0"

NOTES:

- 1) ALL REINFORCING SHALL BE LEVEL 1 (EPOXY COATED) OR HIGHER.
- 2) ANCHOR BAR SHALL BE ASTM A36 AND SHALL BE GALVANIZED IN ACCORDANCE WITH AASHTO M 111M/M 111.
- 3) DAMAGED GALVANIZING OR REINFORCEMENT COATING ON THE ANCHOR BAR ASSEMBLY SHALL BE REPAIRED BY AN APPROVED METHOD.

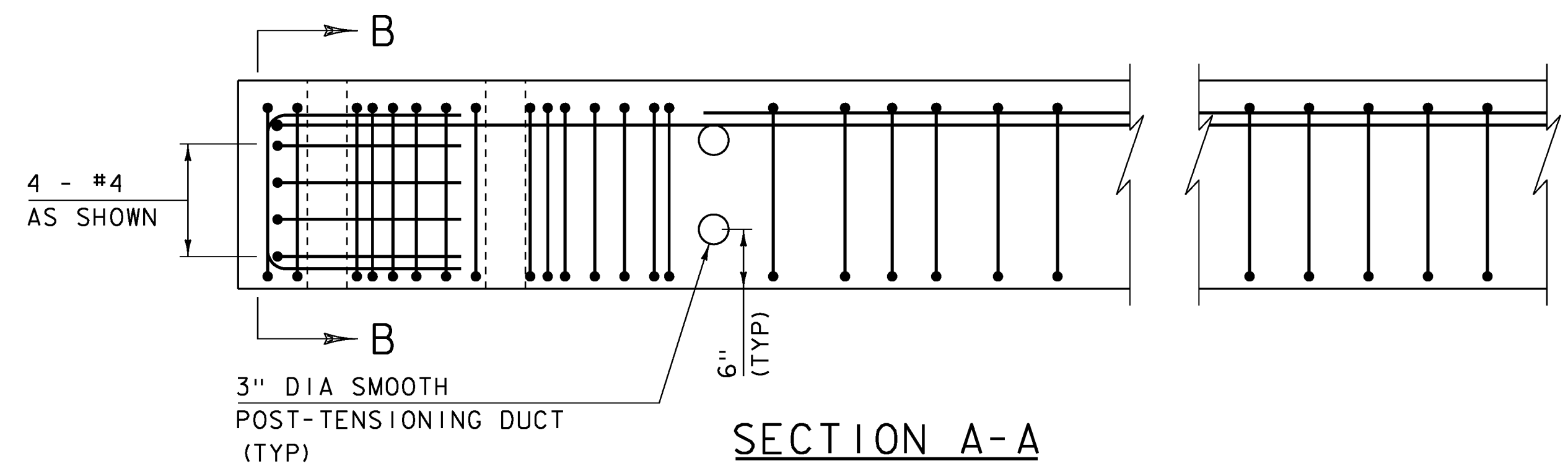


TYPICAL END REINFORCING PLAN

SCALE 1" = 1'-0"

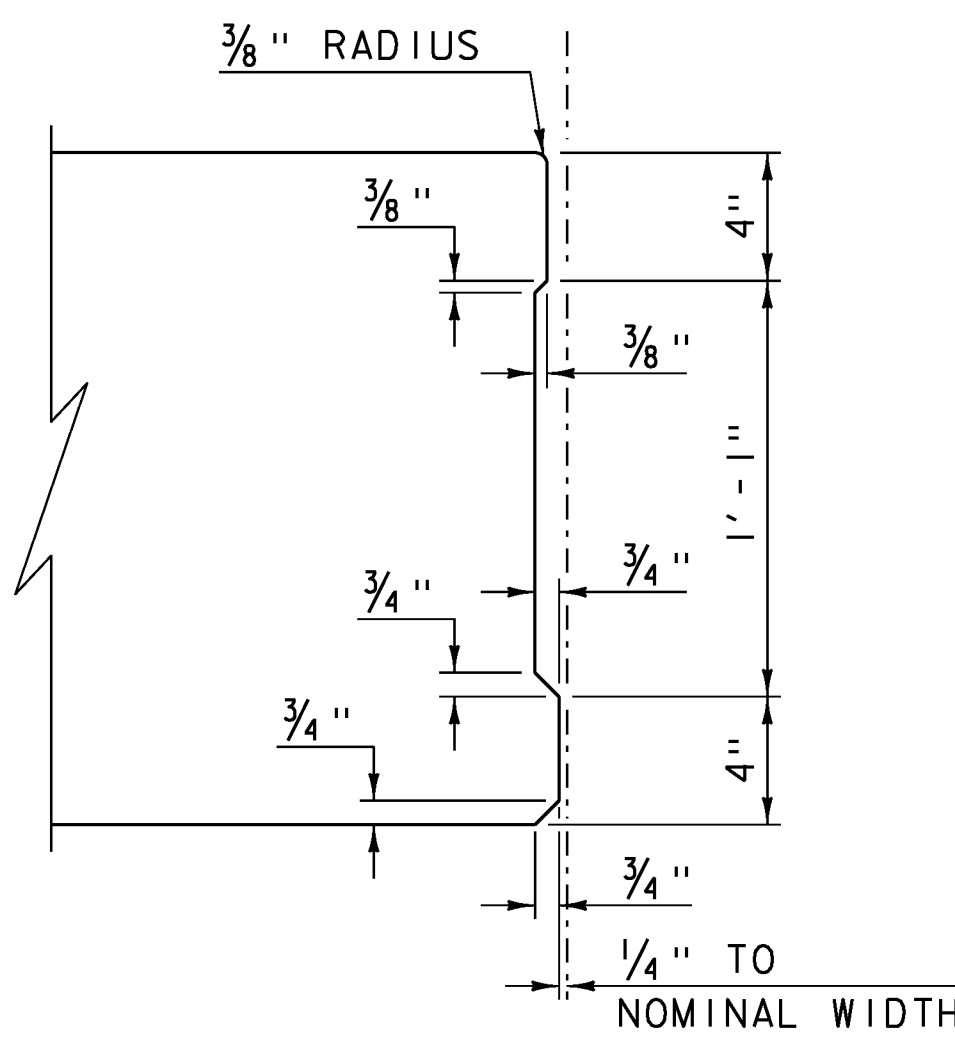
NOTES:

- 1) EXTERIOR SLAB SHOWN, INTERIOR SLAB SIMILAR.



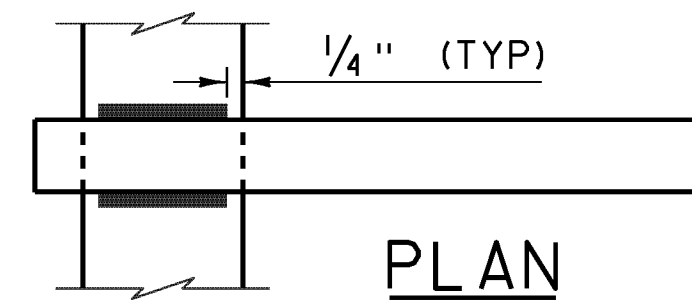
SECTION A-A

SCALE 1" = 1'-0"

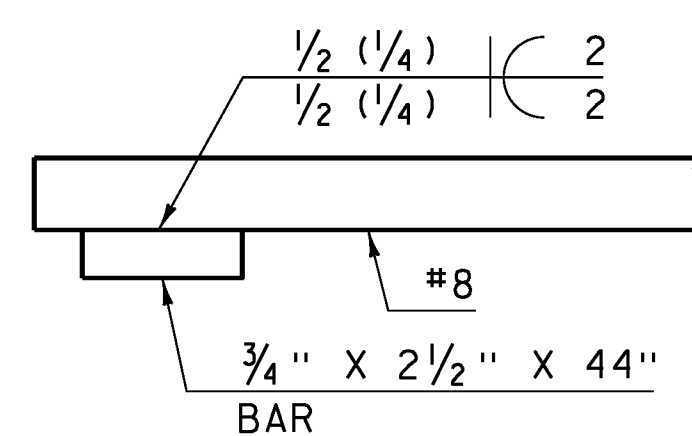


SHEAR KEY DETAIL

SCALE 2" = 1'-0"



PLAN

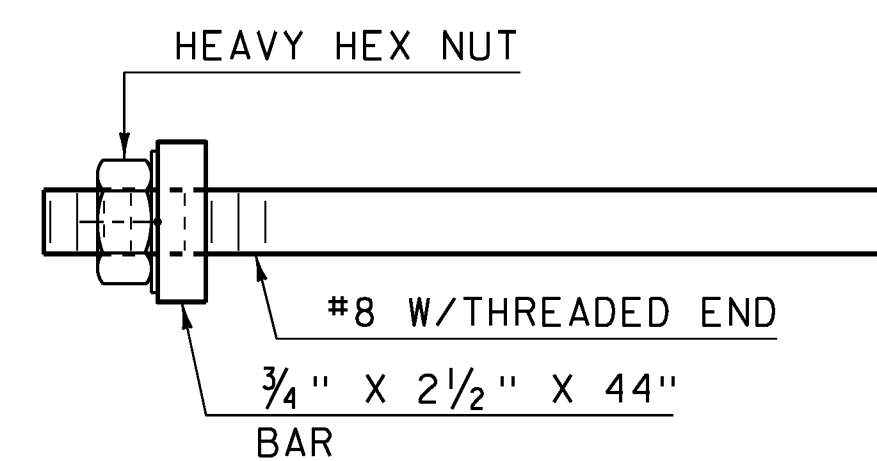


ELEVATION

ANCHOR BAR DETAILS

OPTION "A"

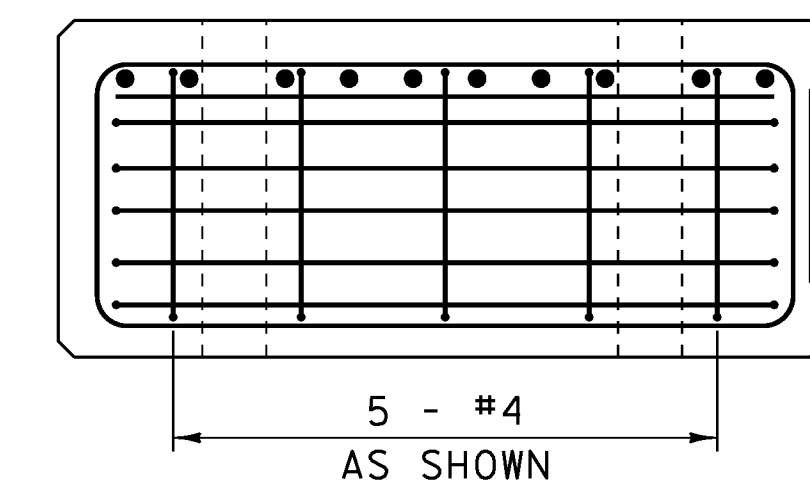
NOT TO SCALE



ANCHOR BAR DETAILS

OPTION "B"

NOT TO SCALE



SECTION B-B

SCALE 1" = 1'-0"

PROJECT NAME: FAIRFIELD
PROJECT NUMBER: BRO 1448 (41)

FILE NAME: sl2j170sup.dgn
PROJECT LEADER: R. YOUNG
DESIGNED BY: T. FILLBACH
SUPERSTRUCTURE DETAILS I

PLOT DATE: 18-AUG-2014
DRAWN BY: K. FRIEDLAND
CHECKED BY: R. KLINEFELTER
SHEET 56 OF 69