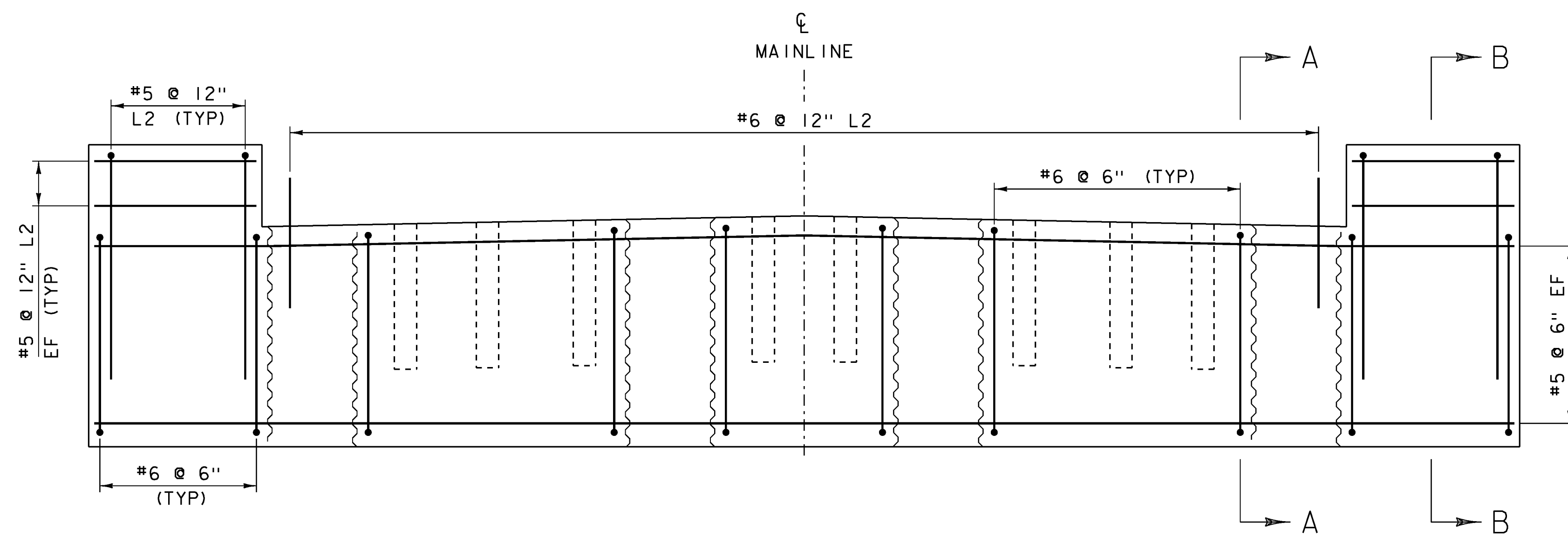


**ABUTMENT REINFORCING PLAN (PCU)**

SCALE 1/2" = 1'-0"

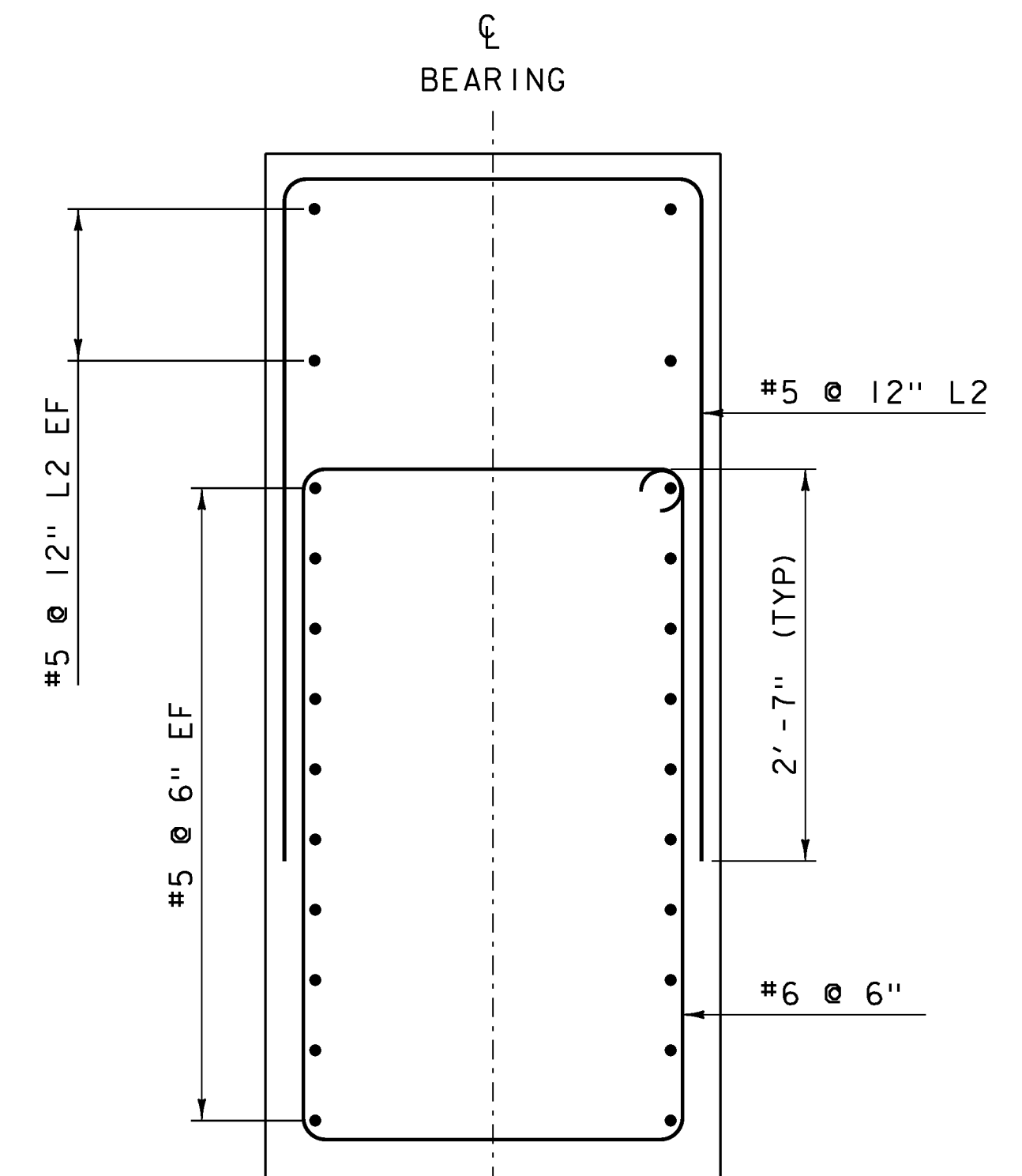


**ABUTMENT REINFORCING ELEVATION (PCU)**

SCALE 1/2" = 1'-0"

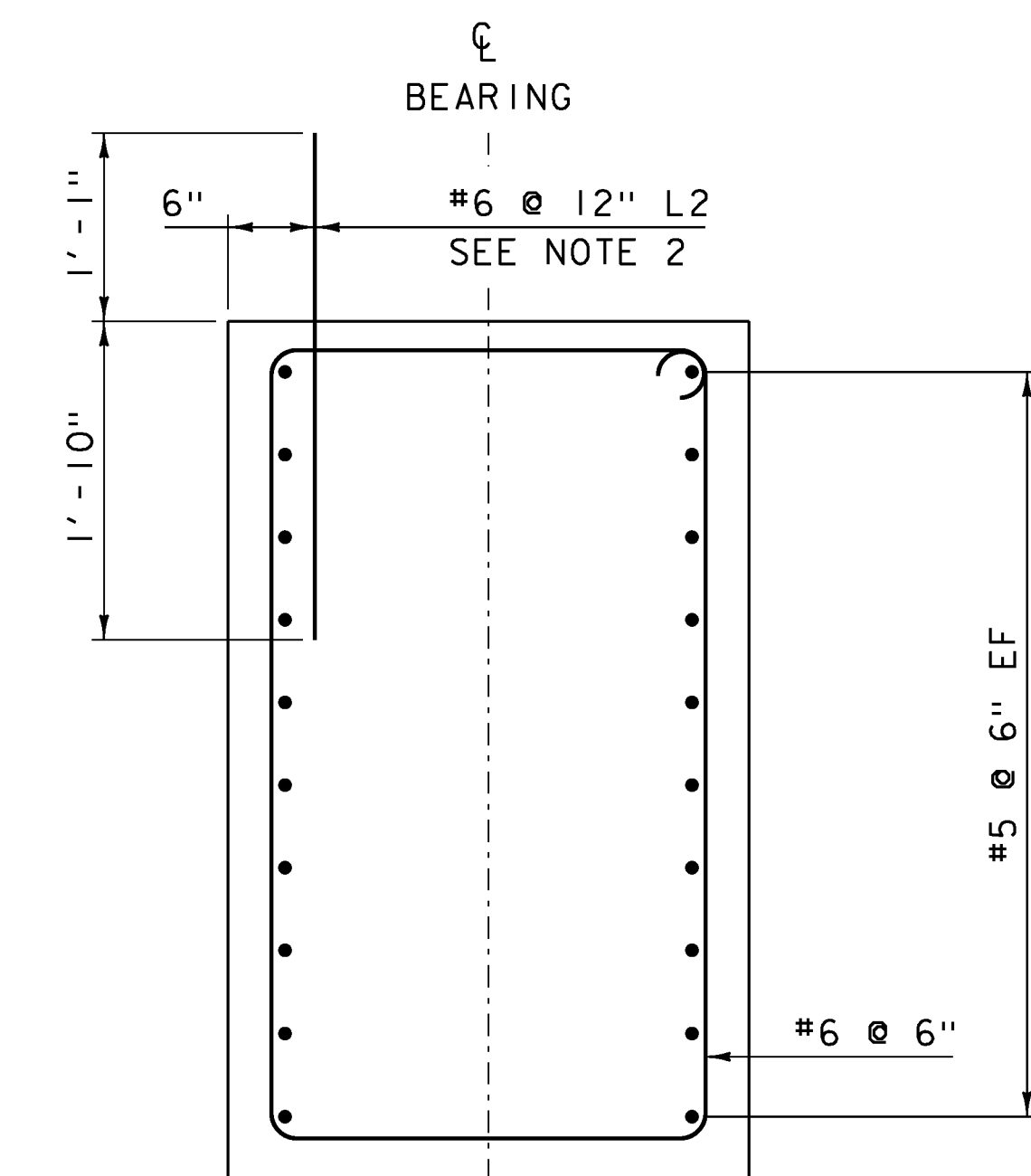
**NOTES:**

- 1) PCU 1 SHOWN, PCU 2 SIMILAR.
- 2) A TEMPLATE SHALL BE USED TO LAYOUT DOWEL DUCTS IN THE APPROACH SLABS. THE SAME TEMPLATE SHALL BE USED TO LAYOUT THE #6 @ 12" L2 APPROACH SLAB DOWELS IN THE ABUTMENTS.



**SECTION B-B**

SCALE 1" = 1'-0"



**SECTION A-A**

SCALE 1" = 1'-0"

**NOTE:**

L2 = LEVEL II REINFORCING  
 NF = NEAR FACE  
 FF = FAR FACE  
 EF = EACH FACE  
 ▲ = CUT TO FIT IN FIELD  
 3" CLEAR, UNLESS OTHERWISE SPECIFIED ON THE PLANS.  
 SPLICES NOT DETAILED SHALL BE DESIGNED

PROJECT NAME: FAIRFIELD	
PROJECT NUMBER: BRF 028(25)	
FILE NAME: sl2j156sub.dgn	PLOT DATE: 18-AUG-2014
PROJECT LEADER: R. YOUNG	DRAWN BY: K. FRIEDLAND
DESIGNED BY: T. FILLBACH	CHECKED BY: R. KLINEFELTER
ABUTMENT REINFORCING	SHEET 28 OF 69