

ABUTMENT PLAN (PCU)

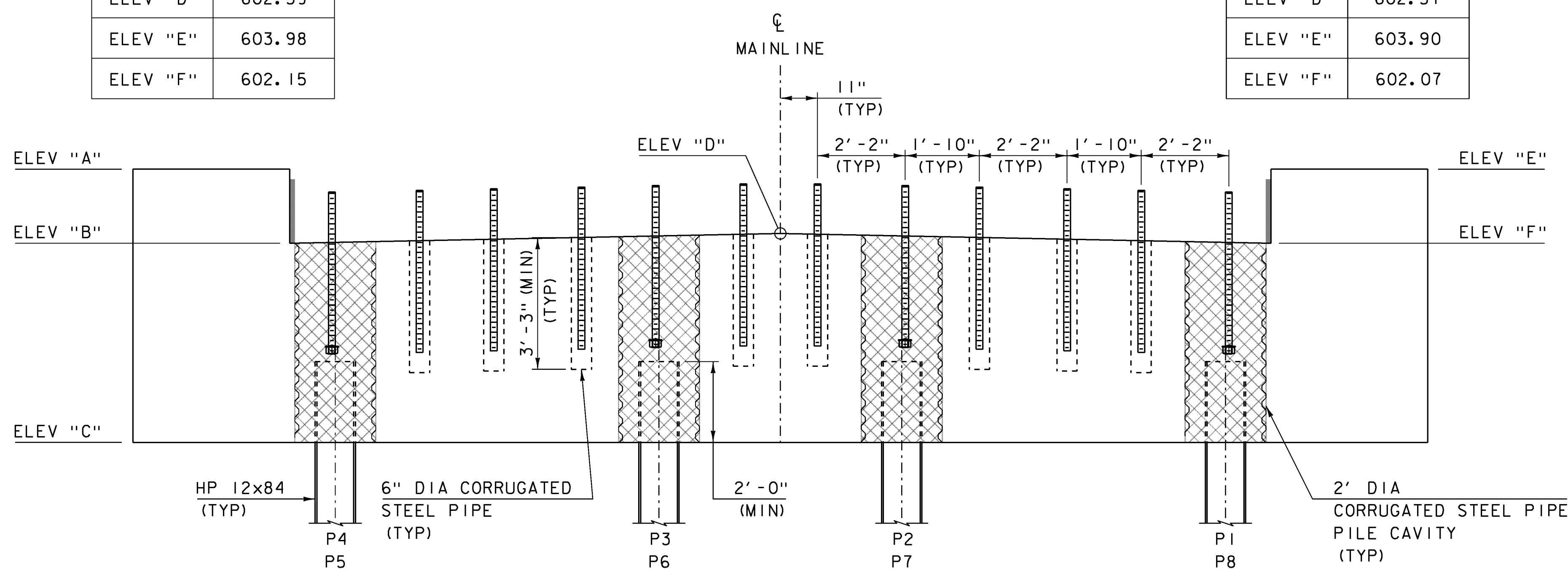
SCALE 1/2" = 1'-0"

PCU 1 ELEVATIONS

ELEV "A"	603.98
ELEV "B"	602.15
ELEV "C"	597.23
ELEV "D"	602.39
ELEV "E"	603.98
ELEV "F"	602.15

PCU 2 ELEVATIONS

ELEV "A"	603.90
ELEV "B"	602.07
ELEV "C"	597.15
ELEV "D"	602.31
ELEV "E"	603.90
ELEV "F"	602.07

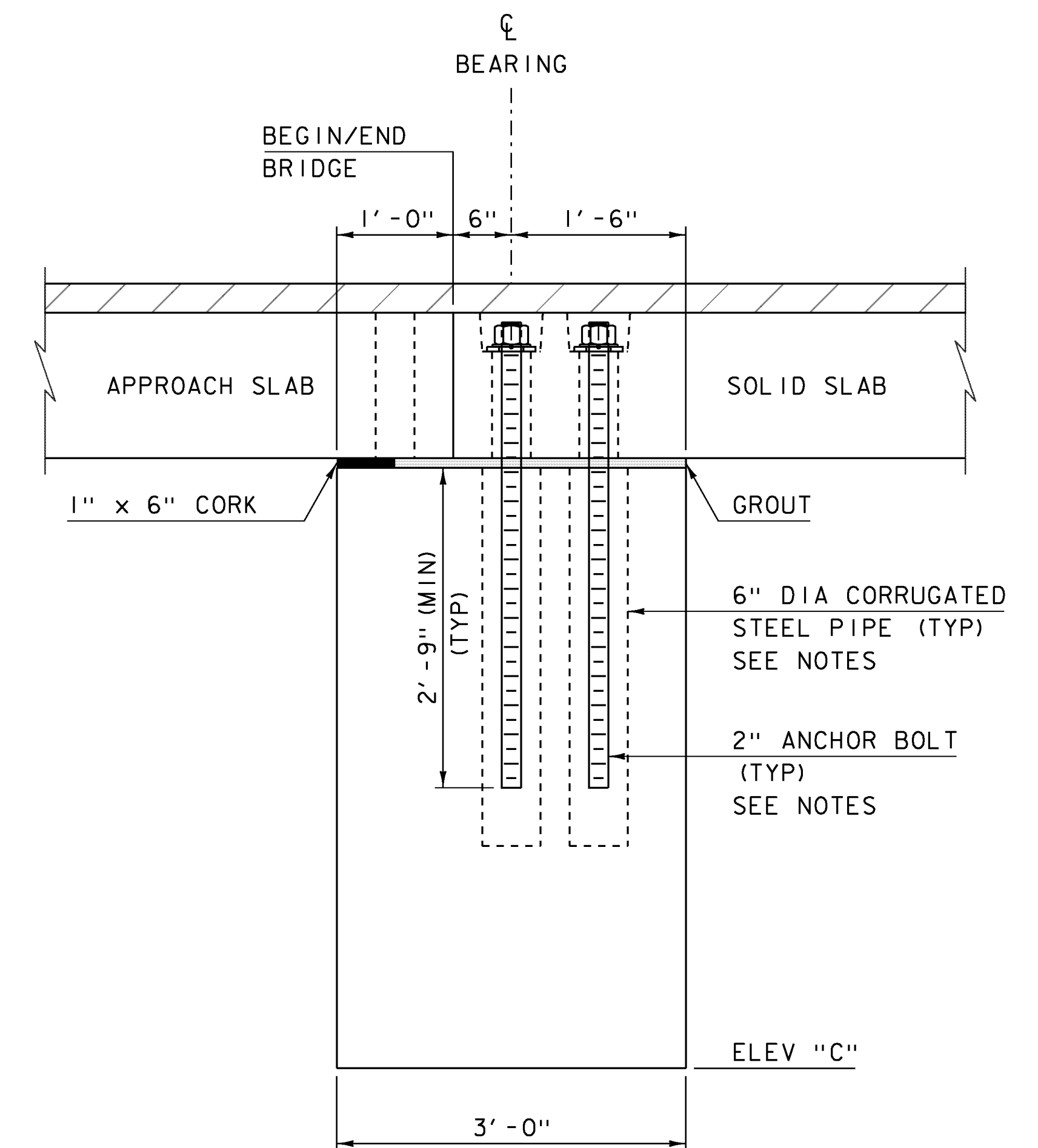


ABUTMENT ELEVATION (PCU)

SCALE 1/2" = 1'-0"

NOTES:

- 1) ANCHOR BOLTS SHALL BE ASTM F1554 GRADE 105.
- 2) ANCHOR BOLTS, NUTS, AND WASHERS SHALL BE GALVANIZED.
- 3) 6" DIA CORRUGATED STEEL PIPES FOR ANCHOR BOLTS SHALL BE PRECAST INTO THE PILE CAPS. DRILLING AND GROUTING ANCHOR BOLTS WILL NOT BE PERMITTED.
- 4) ANCHOR BOLTS, NUTS, WASHERS, AND ANCHOR PLATES SHALL BE PAID FOR UNDER ITEM 506.60, STRUCTURAL STEEL (FPQ).
- 5) GROUT IN 6" DIA CORRUGATED STEEL PIPES FOR ANCHOR BOLTS SHALL HAVE A MINIMUM COMPRESSIVE STRENGTH OF 10 KSI AT 28 DAYS.
- 6) ANCHOR BOLTS LOCATED IN PILE CAVITIES SHALL HAVE A HEAVY HEX NUT AND HARDENED WASHER ON THE BOTTOM END OF EACH ANCHOR BOLT AND SHALL BE SECURED IN THE FINAL POSITION BEFORE THE PILE CAVITY CONCRETE IS PLACED.
- 7) A TEMPLATE SHALL BE USED TO LAYOUT ANCHOR BOLT DUCTS IN THE SOLID SLABS. THE SAME TEMPLATE SHALL BE USED TO LAYOUT ANCHOR BOLT DUCTS AND ANCHOR BOLTS IN THE ABUTMENTS.
- 8) PCU 1 SHOWN, PCU 2 SIMILAR.



ABUTMENT TYPICAL (PCU)

SCALE 1" = 1'-0"

PROJECT NAME:	FAIRFIELD	PLOT DATE:	11-SEP-2014
PROJECT NUMBER:	BRF 028(25)	PROJECT LEADER:	R. YOUNG
FILE NAME:	sl2j156sub.dgn	DESIGNED BY:	T. FILLBACH
		CHECKED BY:	R. KLINEFELTER
		ABUTMENT PLAN	SHEET 27 OF 69