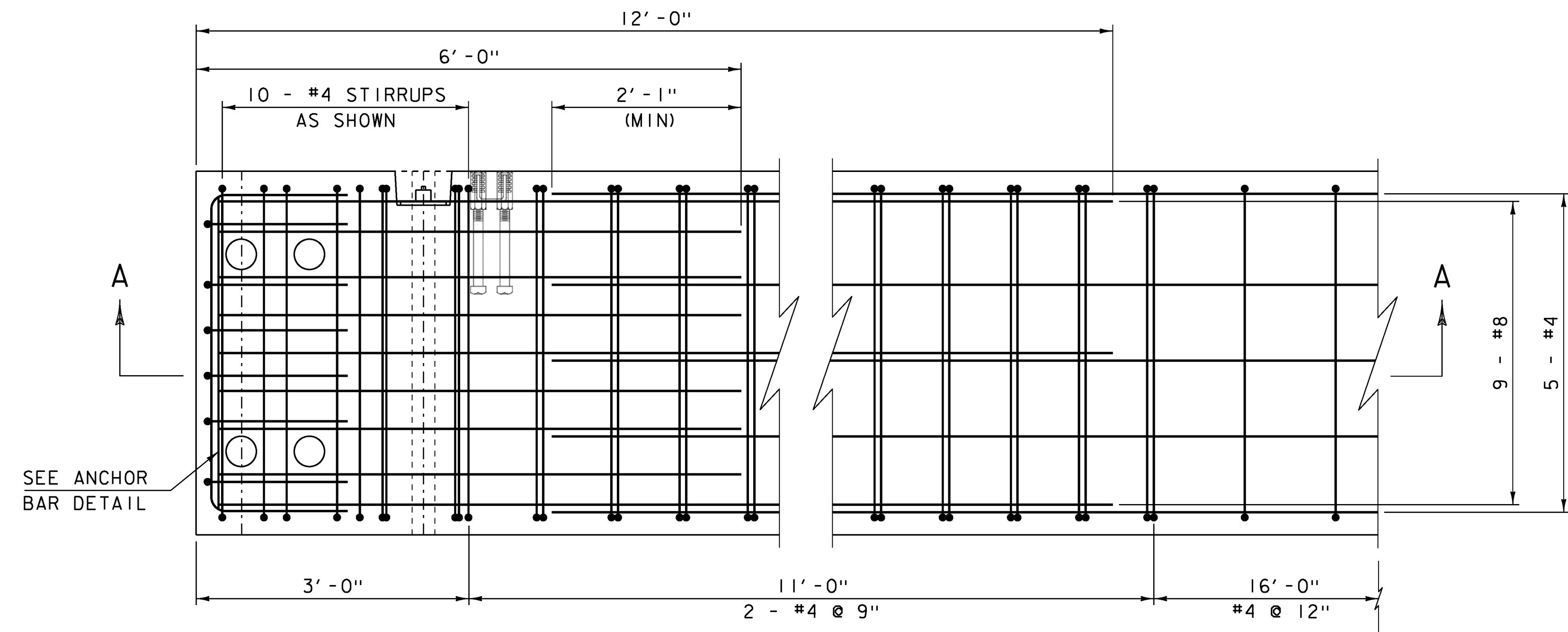


**TYPICAL EXTERIOR SECTION**

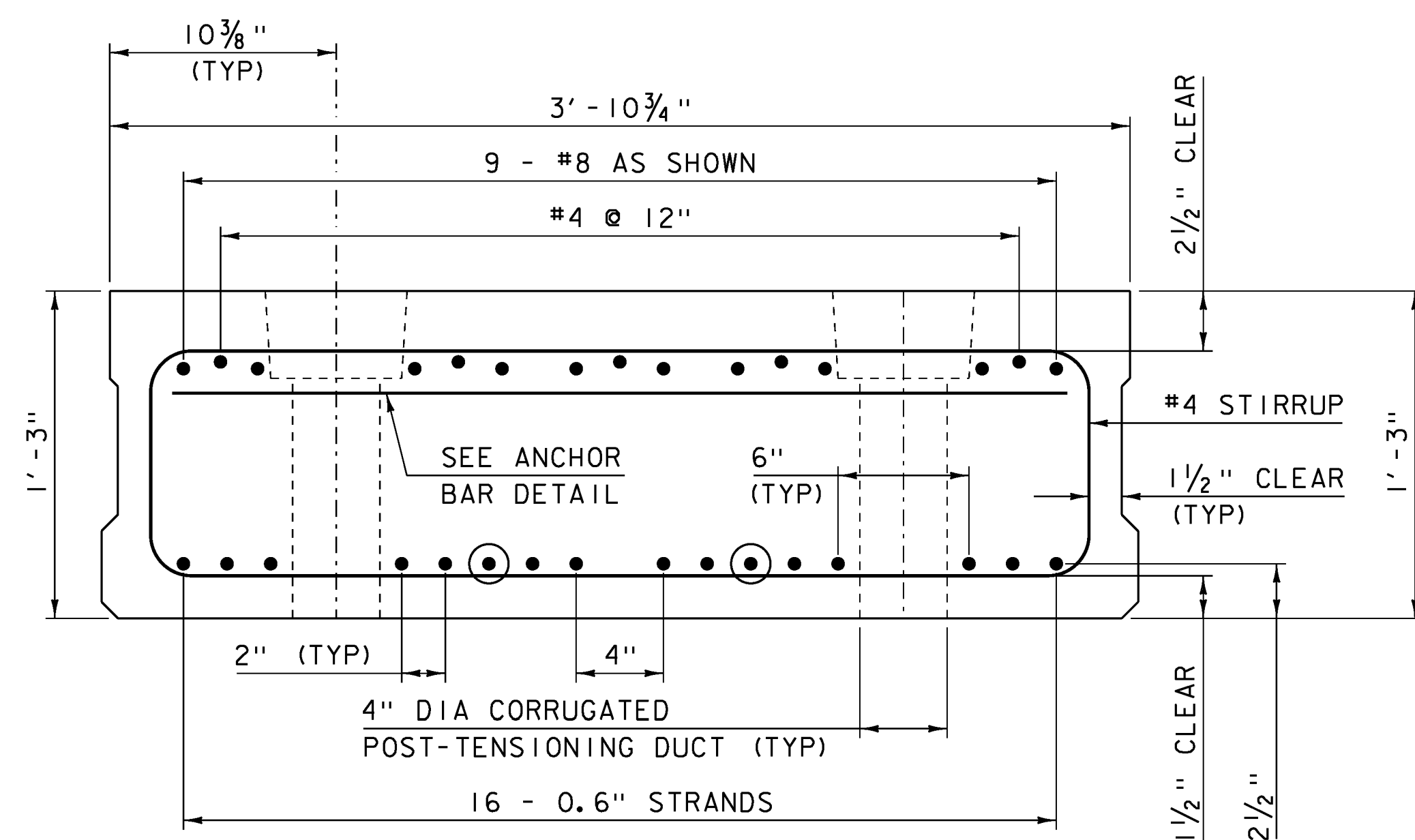
SCALE 2" = 1'-0"



**TYPICAL END REINFORCING PLAN**

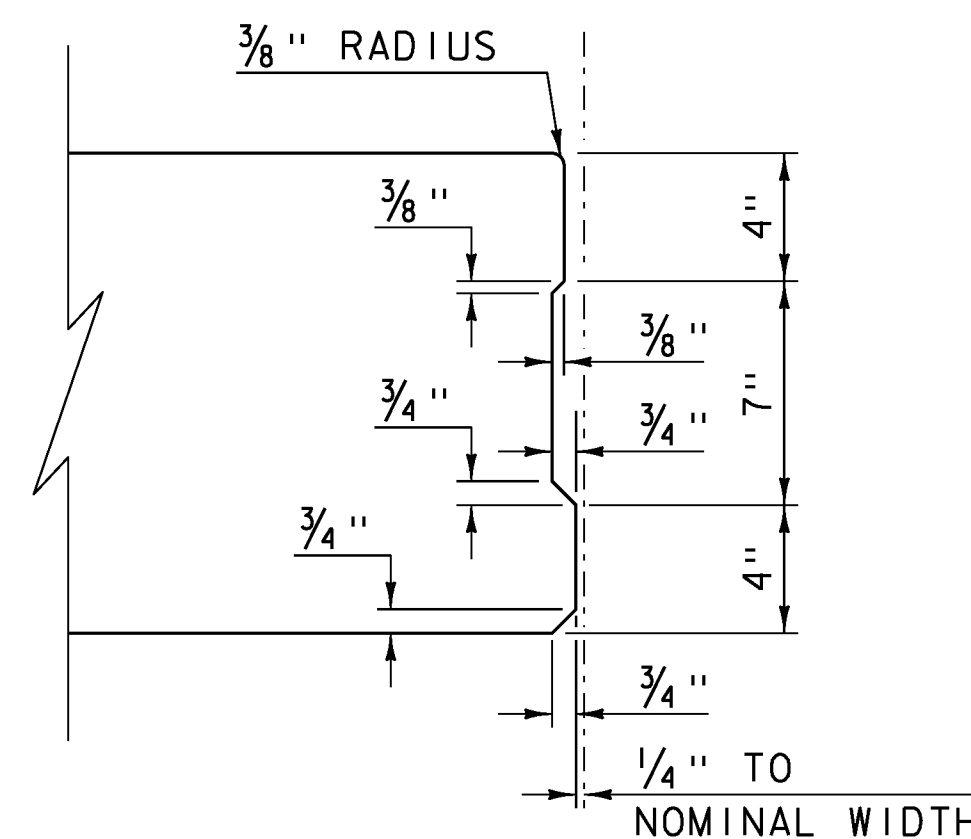
SCALE 1" = 1'-0"

○ - 2'-0" DEBOND EACH END



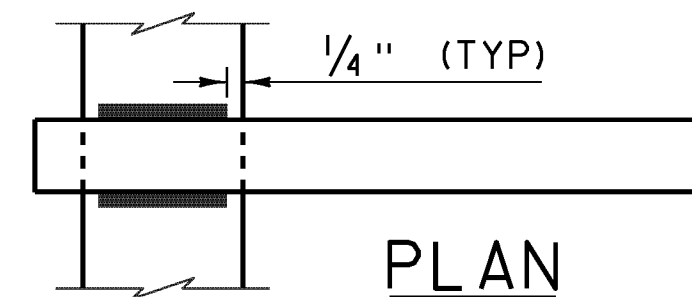
**TYPICAL INTERIOR SECTION**

SCALE 2" = 1'-0"

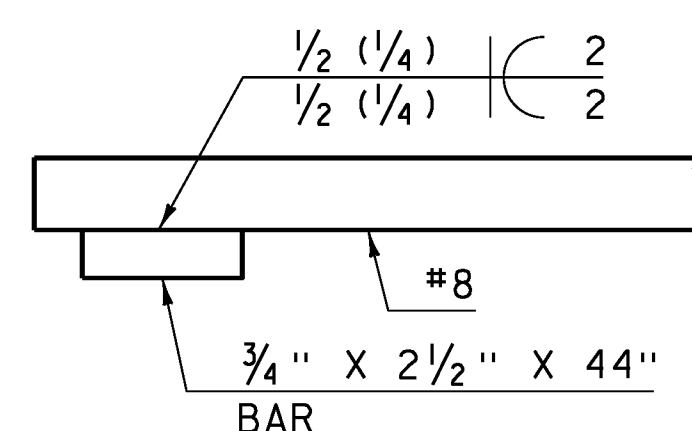


**SHEAR KEY DETAIL**

SCALE 2" = 1'-0"



**PLAN**



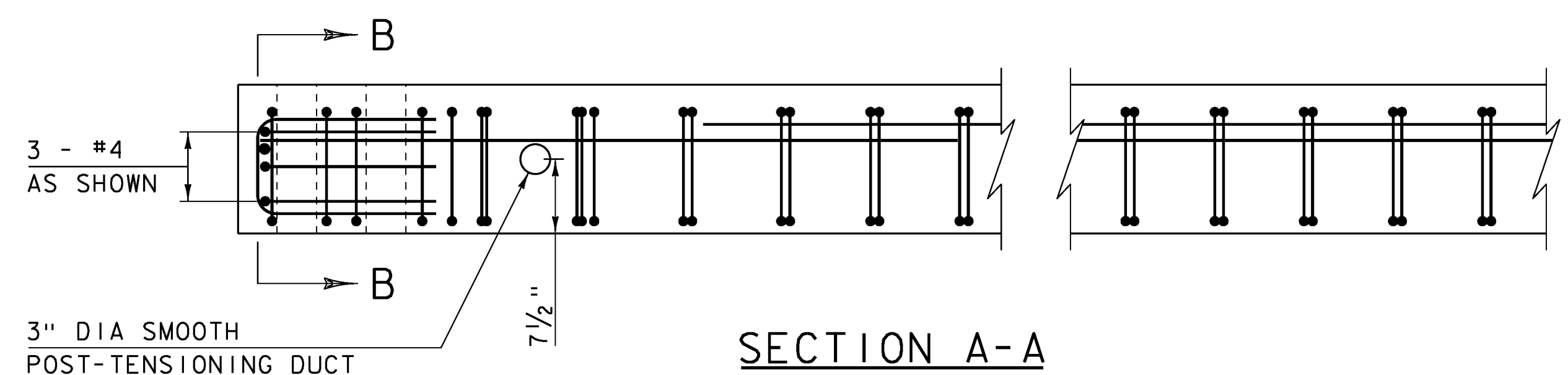
**ELEVATION ANCHOR BAR DETAILS**

**OPTION "A"**

NOT TO SCALE

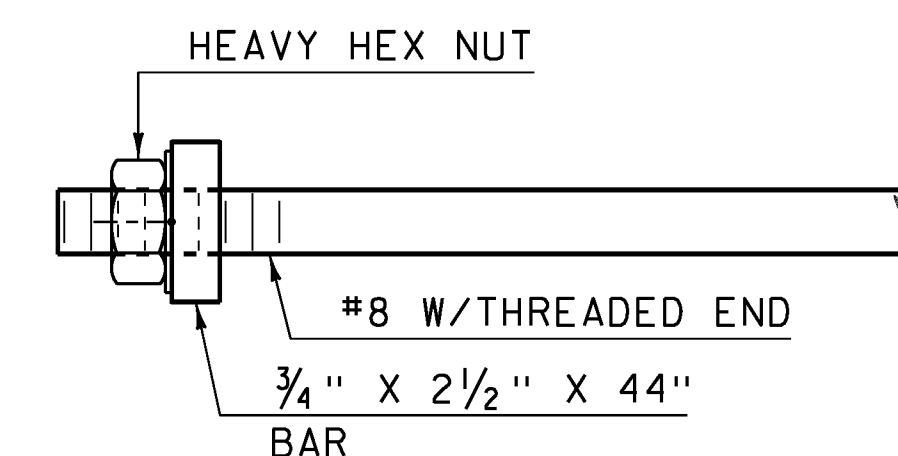
**NOTES:**

- 1) EXTERIOR SLAB SHOWN, INTERIOR SLAB SIMILAR.



**SECTION A-A**

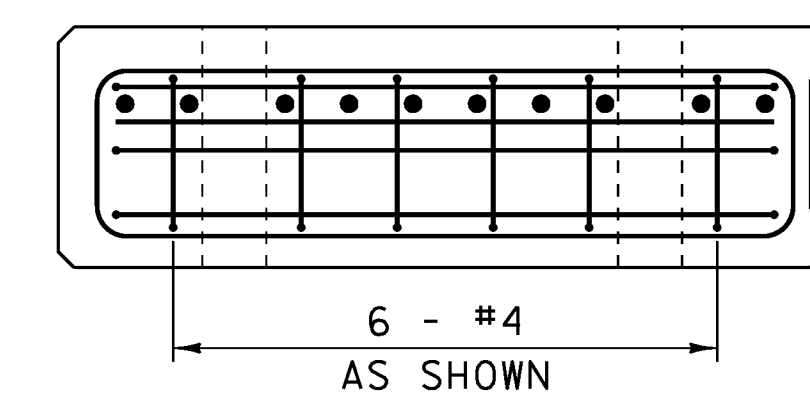
SCALE 1" = 1'-0"



**ANCHOR BAR DETAILS**

**OPTION "B"**

NOT TO SCALE



**SECTION B-B**

SCALE 1" = 1'-0"

**NOTES:**

- 1) ALL REINFORCING SHALL BE LEVEL 2 OR HIGHER.
- 2) ANCHOR BAR SHALL BE ASTM A36 AND SHALL BE GALVANIZED IN ACCORDANCE WITH AASHTO M 111M/M 111.
- 3) DAMAGED GALVANIZING OR REINFORCEMENT COATING ON THE ANCHOR BAR ASSEMBLY SHALL BE REPAIRED BY AN APPROVED METHOD.

PROJECT NAME: FAIRFIELD  
PROJECT NUMBER: BRP 028(25)

FILE NAME: sl2j156sup.dgn  
PROJECT LEADER: R. YOUNG  
DESIGNED BY: T. FILLBACH  
SUPERSTRUCTURE DETAILS I

PLOT DATE: 18-AUG-2014  
DRAWN BY: K. FRIEDLAND  
CHECKED BY: R. KLINEFELTER  
SHEET 23 OF 69